



<http://www.ebiz-tcf.eu>

## IMPLEMENTATION GUIDE

includes COMPARISON BETWEEN CURRENT and LAST  
PREVIOUSLY RELEASED VERSION

TRANSACTION "YARN DESPATCH ADVICE"

Version: v2018-1

Date of release: 18/7/2019

Document code: G016rv

technical Documentation: <http://www.ebiz.enea.it>

XML Schemas repository: <http://www.ebiz.enea.it/moda-ml/repository/schema/v2018-1/default.asp>

Guides repository: <http://www.ebiz.enea.it/moda-ml/repository/guide/v2018-1/default.asp>

Guide filename: G016rv-eBIZ-YarnDespatchAdvice.pdf

# 1. BUSINESS DESCRIPTION

## 1.1 Scope

The present guide has been issued to assist the companies of the Textile-Clothing sector in the implementation of the standard XML document type "YARN DESPATCH ADVISE", providing all the instruction required for its use in any context of e-commerce between Yarn Producers or Subcontractors and their Customers.

All the rules required for the construction and validation of the document are embedded into the specific XML-Schema, which is detailed in section "Implementation guide".

## 1.2 Generalities

The message is issued to anticipate the details the articles actually despatched. The same message can be used with the client for sale and with the subcontractor for working operation (eg. dyeing).

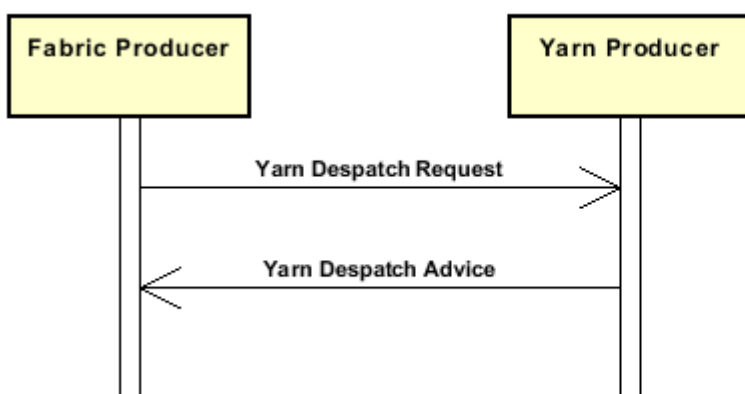
This document can be used:

- as a standard despatch advice
- as a pre-despatch notification of the goods that are to be despatched.

Each document item must correspond with a well defined fabric article (article + color); for each item is possible to reference the Order line that is delivered.

## 1.3. Possible scenario

Delivery of yarn



## 2. IMPLEMENTATION GUIDE

### 2.1 General structure of XML document

All the business data that can be exchanged through this class of documents are shown in the following "document structure", that provides a simplified vision of the Schema.

In particular:

- the two numbers following each element define its "cardinality" (minimum and maximum number of occurrences); the minimum equal zero indicates that the element is optional, the minimum greater than zero indicates that is mandatory;
- the bold character denotes the complex elements (aggregates of simple elements) that were built for the sake of functionality and re-usability of some complex informations sets. The child elements in each parent element are easily spotted as "indented";
- the symbol "@" denotes an attribute of the preceding element; here "the usage indicator (optional, required, ...)" is shown in square brackets.

#### Legenda

- N: new element
- U: updated properties
- P: changes in children
- p: is a changed child
- A: changes in attributes
- a: is a new or changed attribute
- \*: is a subtype

### Structure

#### YARNDesAdvise

```
@TAtype [Optional] [Default= STD]
@msgfunction [Optional] [Default= OR]
@version [Optional] [Default= 2018-1]
@useProfile [Optional]
| TAheader 1-1 (P)
| | msgN 1-1
| | - choose -
| | msgID 0-1
| | - or -
| | docID 0-1
| | @numberingOrg [Optional]
| | - end choose -
| | msgDate 1-1
| | @dateForm [Optional]
| | refDoc 0-9 (P)
| | @docType [Required]
| | | docID 1-2 (p)
| | | @numberingOrg [Optional]
| | | docDate 0-1
| | | @dateForm [Optional]
| | | season 0-1 (A)
| | | @numberingOrg [Optional] (a)
| | | @codeList [Optional] (a)
| | | @listName [Optional] (a)
| | | @listVersion [Optional] (a)
| | | itemID 0-1 (U)
| | | attachment 0-1 (N)
| | | @uid [Optional]
| | | | fileName 0-1 (N)
```

```

| | | @numberingOrg [Optional] (a)
| | | binaryObject 0-1 (N)
| | | @format [Optional] (N)
| | | @mime [Optional] (N)
| | | @encoding [Optional] (N)
| | | @characterSet [Optional] (N)
| | | externalReference 0-99 (N)
| | | | uri 1-1 (N)
| | | | @isURL [Optional] [Default= true] (Na)
| | | | mimeTypeCode 0-1 (N)
| | | | formatCode 0-1 (N)
| | | | encodingCode 0-1 (N)
| | | | characterSetCode 0-1 (N)
| buyer 1-1 (AP)
| @logo [Optional]
| @sender [Optional] (a*)
| | id 1-1 (p)
| | | @numberingOrg [Optional]
| | additionalIdentifier 0-9 (N)
| | | @numberingOrg [Optional] (a)
| | | @idQualifier [Optional] (Na)
| | legalName 0-1 (U)
| | dept 0-1
| | subDept 0-1 (N)
| | person 0-1
| | | @email [Optional]
| | | @phone [Optional]
| | | @fax [Optional]
| | street 0-1
| | city 0-1
| | subCountry 0-1
| | country 0-1
| | postCode 0-1
| supplier 1-1 (AP)
| @logo [Optional]
| @sender [Optional] (a*)
| | id 1-1
| | | @numberingOrg [Optional]
| | additionalIdentifier 0-9 (N)
| | | @numberingOrg [Optional] (a)
| | | @idQualifier [Optional] (Na)
| | legalName 0-1 (U)
| | dept 0-1
| | subDept 0-1 (N)
| | person 0-1
| | | @email [Optional]
| | | @phone [Optional]
| | | @fax [Optional]
| | street 0-1
| | city 0-1
| | subCountry 0-1
| | country 0-1
| | postCode 0-1
| thirdParty 0-5 (AP)
| @VAT [Optional]
| @role [Required]
| @sender [Optional] (a*)
| | id 1-1
| | | @numberingOrg [Optional]
| | legalName 0-1 (U)
| | dept 0-1

```

- | | | subDept 0-1 (N)
- | | | person 0-1
- | | | @email [Optional]
- | | | @phone [Optional]
- | | | @fax [Optional]
- | | | street 0-1
- | | | city 0-1
- | | | subCountry 0-1
- | | | country 0-1
- | | | postCode 0-1
- | | note 0-99
- | | @numberingOrg [Optional]
- | | @codeList [Optional]
- | | @noteLabel [Optional]

**trade 0-1**

- choose -

- | | incoTermText 1-1 (U)

- or -

- | | incoTerm 1-1

- end choose -

- | | location 0-1
- | | @LRI [Optional]

**shipInfo 0-1 (P)**

- | | **transInfo 0-9 (AP)**
- | | @transReason [Optional]
- | | @progr [Optional] (N)
- | | | transMode 1-1
- | | | carrier 0-1
- | | | deliveryPlace 0-1 (U)
- | | | grossWeight 0-1
- | | | @um [Required]
- | | | netWeight 0-1
- | | | @um [Required]
- | | | transMeans 0-1
- | | | transCondition 0-3
- | | | transConditionText 0-1 (U)
- | | | despatchPlace 0-1 (N)
- | | | despatchDate 0-1 (N)
- | | | @dateForm [Optional] (a)
- | | | delEffectiveDate 0-1 (p)
- | | | @dateForm [Optional]
- | | delEffectiveDate 0-1
- | | @dateForm [Optional]
- | | **packages 0-99 (P)**
- | | @packageLevel [Optional]
- | | - choose -
- | | | packageText 1-1 (U)
- | | - or -
- | | | package 1-1
- | | - end choose -
- | | | packageModelCode 0-1 (N)
- | | | @numberingOrg [Optional] (a)
- | | | description 0-unbounded (AU)
- | | | @ln [Optional] (N)
- | | | **packageDim 0-1**
- | | | | length 1-1
- | | | | @um [Required]
- | | | | width 0-1
- | | | | @um [Required]

```

| | | | height 0-1
| | | | @um [Required]
| | | | handlingChar 0-1 (N)
- choose -
| | | | yarnPack 0-1
| | | | | yarnReel 1-1
| | | | | | @reelType [Required]
| | | | | | @reelMat [Optional]
| | | | | | | yarnReelD 0-1
| | | | | | | | @um [Required]
| | | | | | | yarnReelH 0-1
| | | | | | | | @um [Required]
| | | | | | | yarnConeAngle 0-1
| | | | | | | yarnReelQty 0-2
| | | | | | | | @um [Required]
| | | | | | | label 0-1
| | | | | | | labelWrit 0-1
| | | | | | yarnInWrap 0-1
| | | | | | | yarnReelWrap 1-1
| | | | | | | label 0-1
| | | | | | | labelWrit 0-1
- choose -
| | | | | yarnOutWrapText 0-1 (U)
- or -
| | | | | yarnOutWrap 0-1
- end choose -
- or -
| | | | | piecePack 0-1
- choose -
| | | | | | piecePackText 1-1 (U)
- or -
| | | | | | | pieceInnWrap1 1-1
| | | | | | | pieceInnWrap2 0-1
| | | | | | | pieceOutWrap 0-1
- end choose -
- or -
| | | | | acsPack 0-1 (U)
- choose -
| | | | | | acsPackCode 1-1 (AU)
| | | | | | | @numberingOrg [Optional] (a)
| | | | | | | @codeList [Optional] (a)
| | | | | | | @listName [Optional] (a)
| | | | | | | @listVersion [Optional] (a)
- or -
| | | | | | acsPackText 1-1 (U)
- end choose -
- or -
| | | | | garPack 0-1 (N)
- choose -
| | | | | | garPackCode 1-1 (N)
| | | | | | | @numberingOrg [Optional] (a)
| | | | | | | @codeList [Optional] (a)
| | | | | | | @listName [Optional] (a)
| | | | | | | @listVersion [Optional] (a)
- or -
| | | | | | garPackText 1-1 (N)
- end choose -
- end choose -
| | | | | sortableIndicator 0-1 (N)
| | | | | stackabilityLevel 0-1 (N)
| | | | | handlingType 0-1 (N)

```

| | | @In [Optional] (N)  
 | | | volume 0-1 (p)  
 | | | @um [Required]  
 | | | netWeight 0-1 (p)  
 | | | @um [Required]  
 | | | grossWeight 0-1  
 | | | @um [Required]  
 | | | note 0-99  
 | | | @numberingOrg [Optional]  
 | | | @codeList [Optional]  
 | | | @noteLabel [Optional]  
 | itemsPerPackage 0-1 (N)  
 | @um [Required] (a)  
 | minItemsPerPackage 0-1 (N)  
 | @um [Required] (a)  
 | fillingCriterion 0-9 (N)  
 | @progr [Optional] (Na)  
 | packageQty 0-1  
 | packageN 0-unbounded (U)  
 | @numberingOrg [Optional]  
 | @packageContainerN [Optional]  
 | **EPCList 0-1**  
 | | EPC 1-unbounded  
 | | @numberingOrg [Optional]  
 | | @TID [Optional]  
 | **actualPackageUnit 0-unbounded (N)**  
 | @packageLevel [Optional] (a)  
 | | **packageIdentification 1-1 (N)**  
 | | | packageN 1-1 (U)  
 | | | @numberingOrg [Optional]  
 | | | @packageContainerN [Optional]  
 | | | serialN 0-9 (AU)  
 | | | @numberingOrg [Optional]  
 | | | @idQualifier [Optional] (N)  
 | - choose -  
 | | packageText 0-1 (U)  
 | - or -  
 | | package 0-1 (p)  
 | - end choose -  
 | | packageModelCode 0-1 (N)  
 | | @numberingOrg [Optional]  
 | | volume 0-1  
 | | @um [Required]  
 | | netWeight 0-1  
 | | @um [Required]  
 | | grossWeight 0-1  
 | | @um [Required]  
 | | **packageDim 0-1 (p)**  
 | | | length 1-1  
 | | | @um [Required]  
 | | | width 0-1  
 | | | @um [Required]  
 | | | height 0-1  
 | | | @um [Required]  
 | | actualItemsPerPackage 0-1 (N)  
 | | **packagesList 0-1 (N)**  
 | | | **packageIdentification 1-unbounded (N)**  
 | | | | packageN 1-1 (U)  
 | | | | @numberingOrg [Optional]  
 | | | | @packageContainerN [Optional]  
 | | | | serialN 0-9 (AU)

```

| | | | @numberingOrg [Optional]
| | | | @idQualifier [Optional] (N)
| | itemsList 0-1 (N)
| | | qualityLevel 0-1 (N)
| | | @numberingOrg [Optional] (a)
| | | @codeList [Optional] (a)
| | | @listName [Optional] (a)
| | | @listVersion [Optional] (a)
| | | itemIdentification 1-unbounded (N)
| | | | serialN 1-9 (AU)
| | | | @numberingOrg [Optional]
| | | | @idQualifier [Optional] (N)
| | note 0-99
| | | @numberingOrg [Optional]
| | | @codeList [Optional]
| | | @noteLabel [Optional]

```

### | yarnPack 0-1

```

| | yarnReel 1-1
| | | @reelType [Required]
| | | @reelMat [Optional]
| | | | yarnReelID 0-1
| | | | | @um [Required]
| | | | | yarnReelH 0-1
| | | | | | @um [Required]
| | | | | yarnConeAngle 0-1
| | | | | yarnReelQty 0-2
| | | | | | @um [Required]
| | | | | label 0-1
| | | | | labelWrit 0-1
| | | yarnInWrap 0-1
| | | | yarnReelWrap 1-1
| | | | | label 0-1
| | | | | labelWrit 0-1
| | - choose -
| | | yarnOutWrapText 0-1 (U)
| | - or -
| | | yarnOutWrap 0-1
| | - end choose -

```

### | YAbody 1-1

```

| | YAitem 1-unbounded (P)
| | | @extinction [Optional]
| | | | lineN 1-1
| | | | | @VAT [Optional]
| | | | refDoc 0-9 (P)
| | | | | @docType [Required]
| | | | | | docID 1-2 (p)
| | | | | | | @numberingOrg [Optional]
| | | | | | docDate 0-1
| | | | | | | @dateForm [Optional]
| | | | | | season 0-1 (A)
| | | | | | | @numberingOrg [Optional] (a)
| | | | | | | @codeList [Optional] (a)
| | | | | | | @listName [Optional] (a)
| | | | | | | @listVersion [Optional] (a)
| | | | | itemID 0-1 (U)
| | | | | attachment 0-1 (N)
| | | | | | @uid [Optional]
| | | | | | | fileName 0-1 (N)
| | | | | | | @numberingOrg [Optional]

```



```

| | | | binaryObject 0-1 (N)
| | | | @format [Optional] (N)
| | | | @mime [Optional] (N)
| | | | @encoding [Optional] (N)
| | | | @characterSet [Optional] (N)
| | | | externalReference 0-99 (N)
| | | | | uri 1-1 (N)
| | | | | @isURL [Optional] [Default= true] (Na)
| | | | | mimeTypeCode 0-1 (N)
| | | | | formatCode 0-1 (N)
| | | | | encodingCode 0-1 (N)
| | | | | characterSetCode 0-1 (N)
| | | | yarnCode 1-2 (P)
| | | | @numberingOrg [Optional] [Default= CL]
| | | | | art 1-1 (U)
| | | | | @numberingOrg [Optional]
| | | | | @codeList [Optional]
| | | | | @listName [Optional]
| | | | | @listVersion [Optional]
| | | | | color 0-1
| | | | | @numberingOrg [Optional]
| | | | | @codeList [Optional]
| | | | | @listName [Optional]
| | | | | @listVersion [Optional]
| | | | | added 0-9
| | | | | @numberingOrg [Optional]
| | | | | @addType [Optional]
| | | | | description 0-unbounded (AU)
| | | | | @ln [Optional] (N)
| | | | yarnCompos 0-1
| | | | | percCompos 1-9
| | | | | @fibre [Required]
| | | | yarnSpecs 0-99
| | | | - choose -
| | | | | yarnCharText 1-1 (U)
| | | | - or -
| | | | | yarnChar 1-1
| | | | - end choose -
| | | | | experimValue 0-1
| | | | | @um [Optional]
| | | | | @method [Optional]
| | | | | @application [Optional]
| | | | | @idCO [Optional]
| | | | | specValue 0-1
| | | | | @um [Optional]
| | | | | @source [Optional]
| | | | | @method [Optional]
| | | | | @application [Optional]
| | | | | @CV [Optional]
| | | | - choose -
| | | | | tolerance 0-2
| | | | | @um [Required]
| | | | - or -
| | | | | pcTolerance 0-2
| | | | | @um [Optional]
| | | | - end choose -
| | | | lotN 0-2
| | | | @numberingOrg [Optional]
| | | | dyeN 0-2
| | | | @numberingOrg [Optional]
| | | | qty 1-2

```

```

| | | | @um [Required]
| | | | thirdParty 0-3 (AP)
| | | | @VAT [Optional]
| | | | @role [Required]
| | | | @sender [Optional] (a*)
| | | | | id 1-1
| | | | | @numberingOrg [Optional]
| | | | | legalName 0-1 (U)
| | | | | dept 0-1
| | | | | subDept 0-1 (N)
| | | | | person 0-1
| | | | | @email [Optional]
| | | | | @phone [Optional]
| | | | | @fax [Optional]
| | | | | street 0-1
| | | | | city 0-1
| | | | | subCountry 0-1
| | | | | country 0-1
| | | | | postCode 0-1
| | | | shipInfo 0-1 (P)
| | | | | transInfo 0-9 (AP)
| | | | | @transReason [Optional]
| | | | | @progr [Optional] (N)
| | | | | | transMode 1-1
| | | | | | carrier 0-1
| | | | | | deliveryPlace 0-1 (U)
| | | | | | grossWeight 0-1
| | | | | | @um [Required]
| | | | | | netWeight 0-1
| | | | | | @um [Required]
| | | | | | transMeans 0-1
| | | | | | transCondition 0-3
| | | | | | transConditionText 0-1 (U)
| | | | | | despatchPlace 0-1 (N)
| | | | | | despatchDate 0-1 (N)
| | | | | | @dateForm [Optional]
| | | | | | delEffectiveDate 0-1 (p)
| | | | | | @dateForm [Optional]
| | | | | delEffectiveDate 0-1
| | | | | @dateForm [Optional]
| | | | | packages 0-99 (P)
| | | | | @packageLevel [Optional]
| | | | | - choose -
| | | | | | packageText 1-1 (U)
| | | | | | - or -
| | | | | | package 1-1
| | | | | | - end choose -
| | | | | | packageModelCode 0-1 (N)
| | | | | | @numberingOrg [Optional]
| | | | | | description 0-unbounded (AU)
| | | | | | @ln [Optional] (N)
| | | | | | packageDim 0-1
| | | | | | | length 1-1
| | | | | | | @um [Required]
| | | | | | | width 0-1
| | | | | | | @um [Required]
| | | | | | | height 0-1
| | | | | | | @um [Required]
| | | | | | handlingChar 0-1 (N)
| | | | | | - choose -
| | | | | | yarnPack 0-1

```



grossWeight 0-1  
 @um [Required]  
 note 0-99  
 @numberingOrg [Optional]  
 @codeList [Optional]  
 @noteLabel [Optional]  
 itemsPerPackage 0-1 (N)  
 @um [Required]  
 minItemsPerPackage 0-1 (N)  
 @um [Required]  
 fillingCriterion 0-9 (N)  
 @progr [Optional] (N)  
 packageQty 0-1  
 packageN 0-unbounded (U)  
 @numberingOrg [Optional]  
 @packageContainerN [Optional]

**EPClist 0-1**

EPC 1-unbounded  
 @numberingOrg [Optional]  
 @TID [Optional]

**actualPackageUnit 0-unbounded (N)**  
 @packageLevel [Optional] (a)

**packageIdentification 1-1 (N)**

packageN 1-1 (U)  
 @numberingOrg [Optional]  
 @packageContainerN [Optional]  
 serialN 0-9 (AU)  
 @numberingOrg [Optional]  
 @idQualifier [Optional] (N)

- choose -

packageText 0-1 (U)

- or -

package 0-1 (p)

- end choose -

packageModelCode 0-1 (N)  
 @numberingOrg [Optional] (a)

volume 0-1  
 @um [Required]

netWeight 0-1  
 @um [Required]

grossWeight 0-1  
 @um [Required]

**packageDim 0-1 (p)**

length 1-1  
 @um [Required]

width 0-1  
 @um [Required]

height 0-1  
 @um [Required]

actualItemsPerPackage 0-1 (N)

**packagesList 0-1 (N)**

**packageIdentification 1-unbounded (N)**

packageN 1-1 (U)  
 @numberingOrg [Optional]  
 @packageContainerN [Optional]  
 serialN 0-9 (AU)  
 @numberingOrg [Optional]  
 @idQualifier [Optional] (N)

**itemsList 0-1 (N)**

qualityLevel 0-1 (N)  
 @numberingOrg [Optional] (a)

```

| | | | | @codeList [Optional] (a)
| | | | | @listName [Optional] (a)
| | | | | @listVersion [Optional] (a)
| | | | | itemIdentification 1-unbounded (N)
| | | | | | serialN 1-9 (AU)
| | | | | | @numberingOrg [Optional]
| | | | | | @idQualifier [Optional] (N)
| | | | | note 0-99
| | | | | | @numberingOrg [Optional]
| | | | | | @codeList [Optional]
| | | | | | @noteLabel [Optional]
| | | | | yarnPack 0-1
| | | | | | yarnReel 1-1
| | | | | | | @reelType [Required]
| | | | | | | @reelMat [Optional]
| | | | | | | | yarnReelD 0-1
| | | | | | | | | @um [Required]
| | | | | | | | yarnReelH 0-1
| | | | | | | | | @um [Required]
| | | | | | | | yarnConeAngle 0-1
| | | | | | | | yarnReelQty 0-2
| | | | | | | | | @um [Required]
| | | | | | | | label 0-1
| | | | | | | | labelWrit 0-1
| | | | | | | yarnInWrap 0-1
| | | | | | | | yarnReelWrap 1-1
| | | | | | | | label 0-1
| | | | | | | | labelWrit 0-1
| | | | | - choose -
| | | | | | yarnOutWrapText 0-1 (U)
| | | | | - or -
| | | | | | yarnOutWrap 0-1
| | | | | - end choose -
| | | | | itemsList 0-1 (N)
| | | | | | qualityLevel 0-1 (N)
| | | | | | | @numberingOrg [Optional] (a)
| | | | | | | @codeList [Optional] (a)
| | | | | | | @listName [Optional] (a)
| | | | | | | @listVersion [Optional] (a)
| | | | | | | itemIdentification 1-unbounded (N)
| | | | | | | | serialN 1-9 (AU)
| | | | | | | | @numberingOrg [Optional]
| | | | | | | | @idQualifier [Optional] (N)
| | | | | packageN 0-unbounded (U)
| | | | | | @numberingOrg [Optional]
| | | | | | @packageContainerN [Optional]
| | | | | note 0-99
| | | | | | @numberingOrg [Optional]
| | | | | | @codeList [Optional]
| | | | | | @noteLabel [Optional]

```

## 2.2 Detailed description of document elements

Following tables show all elements (complex and simple) used in this document. Description includes: 1) element's information: xml tag, name, brief description, data type and syntax constraints; 2) information about use of the element in a particular position in the document: xpath and possible associated notes.

### 2.2.1 Complex elements (Aggregate Business Information Entities)

Complex elements are those elements whose content is composed of other elements (childs). Complex elements are alphabetically ordered.

<b>acsPack</b>	type of wrapping or packing of the accessory (XPath YARNDesAdvise/shipInfo/packages/handlingChar/acsPack) 0-1 (U) (XPath YARNDesAdvise/YAbody/YAitem/shipInfo/packages/handlingChar/acsPack) 0-1 (U)
<b>actualPackageUnit</b>	description and identification of a single transport package (XPath YARNDesAdvise/shipInfo/actualPackageUnit) 0-unbounded (N) - note: <i>this element might be repeated for listing each single package of the shipment</i> (XPath YARNDesAdvise/YAbody/YAitem/shipInfo/actualPackageUnit) 0-unbounded (N) - note: <i>this element might be repeated for listing each single package of the shipment</i>
<b>attachment</b>	an attached document. An attachment can refer to an external document or be included with the document being exchanged (XPath YARNDesAdvise/THeader/refDoc/attachment) 0-1 (N) (XPath YARNDesAdvise/YAbody/YAitem/refDoc/attachment) 0-1 (N)
<b>buyer</b>	details of the Buyer (party that buys the good or service that is object of the current collaborative process) - base type: Nad, (XPath YARNDesAdvise/THeader/buyer) 1-1 (AP)
<b>EPCList</b>	list of identifiers used for tracing a physical item with RFID technology (XPath YARNDesAdvise/shipInfo/packages/EPCList) 0-1 - note: <i>this element is DEPRECATED, please use the specific elements</i> (XPath YARNDesAdvise/YAbody/YAitem/shipInfo/packages/EPCList) 0-1 - note: <i>this element is DEPRECATED, please use the specific elements</i>
<b>externalReference</b>	details about an external object, such as a document stored at a remote location (XPath YARNDesAdvise/YAbody/YAitem/refDoc/attachment/externalReference) 0-99 (N) (XPath YARNDesAdvise/THeader/refDoc/attachment/externalReference) 0-99 (N)
<b>garPack</b>	the packaging mode of the item or a part of it. (XPath YARNDesAdvise/YAbody/YAitem/shipInfo/packages/handlingChar/garPack) 0-1 (N) (XPath YARNDesAdvise/shipInfo/packages/handlingChar/garPack) 0-1 (N)
<b>handlingChar</b>	features of an item (item or package) useful for its transport and warehouse management. (XPath YARNDesAdvise/YAbody/YAitem/shipInfo/packages/handlingChar) 0-1 (N) - note: <i>in this case the characteristics are related to the package.</i> (XPath YARNDesAdvise/shipInfo/packages/handlingChar) 0-1 (N) - note: <i>in this case the characteristics are related to the package.</i>
<b>itemIdentification</b>	serial identification of a product unit (XPath YARNDesAdvise/YAbody/YAitem/itemsList/itemIdentification) 1-unbounded (N) - note: <i>identification of the single product unit contained in the list</i>

	<p>(XPath YARNDesAdvise/shipInfo/actualPackageUnit/itemsList/itemIdentification) 1-ubounded (N)</p> <p>- note: <i>identification of the single product unit contained in the list</i></p> <p>(XPath YARNDesAdvise/YAbody/YAitem/shipInfo/actualPackageUnit/itemsList/itemIdentification) 1-ubounded (N)</p> <p>- note: <i>identification of the single product unit contained in the list</i></p>
<b>itemsList</b>	<p>list of the single product units</p> <p>(XPath YARNDesAdvise/YAbody/YAitem/itemsList) 0-1 (N)</p> <p>(XPath YARNDesAdvise/shipInfo/actualPackageUnit/itemsList) 0-1 (N)</p> <p>(XPath YARNDesAdvise/YAbody/YAitem/shipInfo/actualPackageUnit/itemsList) 0-1 (N)</p>
<b>packageDim</b>	<p>dimensions of a transport package</p> <p>(XPath YARNDesAdvise/shipInfo/actualPackageUnit/packageDim) 0-1 (p)</p> <p>(XPath YARNDesAdvise/YAbody/YAitem/shipInfo/actualPackageUnit/packageDim) 0-1 (p)</p> <p>(XPath YARNDesAdvise/shipInfo/packages/packageDim) 0-1</p> <p>(XPath YARNDesAdvise/YAbody/YAitem/shipInfo/packages/packageDim) 0-1</p>
<b>packageIdentification</b>	<p>serial identification of a package</p> <p>(XPath YARNDesAdvise/YAbody/YAitem/shipInfo/actualPackageUnit/packageIdentification) 1-1 (N)</p> <p>(XPath YARNDesAdvise/YAbody/YAitem/shipInfo/actualPackageUnit/packagesList/packageIdentification) 1-ubounded (N)</p> <p>- note: <i>identification of the single package contained in the list</i></p> <p>(XPath YARNDesAdvise/shipInfo/actualPackageUnit/packageIdentification) 1-1 (N)</p> <p>(XPath YARNDesAdvise/shipInfo/actualPackageUnit/packagesList/packageIdentification) 1-ubounded (N)</p> <p>- note: <i>identification of the single package contained in the list</i></p>
<b>packages</b>	<p>describes the composition of the transport packaging. Each element corresponds to a type of package: type, quantity, hierarchic level, list of identifiers of the single packages</p> <p>(XPath YARNDesAdvise/shipInfo/packages) 0-99 (P)</p> <p>- note: <i>this element must be iterated for each type of package</i></p> <p>(XPath YARNDesAdvise/YAbody/YAitem/shipInfo/packages) 0-99 (P)</p> <p>- note: <i>this element must be iterated for each type of package</i></p>
<b>packagesList</b>	<p>list of single packages</p> <p>(XPath YARNDesAdvise/YAbody/YAitem/shipInfo/actualPackageUnit/packagesList) 0-1 (N)</p> <p>- note: <i>list of packages contained within the actual package (thus with lower level). All the packages in the list should preferably have the same level.</i></p> <p>(XPath YARNDesAdvise/shipInfo/actualPackageUnit/packagesList) 0-1 (N)</p> <p>- note: <i>list of packages contained within the actual package (thus with lower level). All the packages in the list should preferably have the same level.</i></p>
<b>piecePack</b>	<p>type of wrapping or packing of the fabric pieces</p> <p>(XPath YARNDesAdvise/YAbody/YAitem/shipInfo/packages/handlingChar/piecePack) 0-1</p> <p>(XPath YARNDesAdvise/shipInfo/packages/handlingChar/piecePack) 0-1</p>
<b>refDoc</b>	<p>identification of a document and of an item thereof, to which the message makes reference</p> <p>(XPath YARNDesAdvise/TAheader/refDoc) 0-9 (P)</p> <p>(XPath YARNDesAdvise/YAbody/YAitem/refDoc) 0-9 (P)</p>
<b>shipInfo</b>	<p>miscellaneous information on transport and transport packages, referred either to the whole document or to the single item</p> <p>(XPath YARNDesAdvise/YAbody/YAitem/shipInfo) 0-1 (P)</p>

	- note: <i>here the infos valid for the single item must be specified</i> (XPath YARNDesAdvise/shipInfo) 0-1 (P)
<b>supplier</b>	details of the Supplier (party that supplies the good or service that is object of the current collaborative process) - base type: Nad, (XPath YARNDesAdvise/THeader/supplier) 1-1 (AP)
<b>THeader</b>	header of the TEXTILES (YARN) DESPATCH ADVISE (XPath YARNDesAdvise/THeader) 1-1 (P)
<b>thirdParty</b>	details of the Third Party, different from Sender and Receiver of the document - base type: Nad, (XPath YARNDesAdvise/YAbody/YAitem/thirdParty) 0-3 (AP) - note: <i>here the Consignee of the item, different from the one in header, must be specified</i> (XPath YARNDesAdvise/THeader/thirdParty) 0-5 (AP) - note: <i>here the Consignee when different from the Client must be specified</i>
<b>trade</b>	general terms of trade for the specified supply (XPath YARNDesAdvise/trade) 0-1
<b>transInfo</b>	details of transport: mode, carrier and delivery place (XPath YARNDesAdvise/shipInfo/transInfo) 0-9 (AP) - note: <i>this data group can be iterated for each transport leg. They have to be in ordered sequence from initial place up to the final delivery place.</i> (XPath YARNDesAdvise/YAbody/YAitem/shipInfo/transInfo) 0-9 (AP) - note: <i>this data group can be iterated for each transport leg. They have to be in ordered sequence from initial place up to the final delivery place.</i>
<b>YAbody</b>	body of the document YARN DESPATCH ADVISE (XPath YARNDesAdvise/YAbody) 1-1
<b>YAitem</b>	line item of the document YARN DESPATCH ADVISE (XPath YARNDesAdvise/YAbody/YAitem) 1-unbounded (P)
<b>yarnCode</b>	full codification of a yarn product (XPath YARNDesAdvise/YAbody/YAitem/yarnCode) 1-2 (P)
<b>yarnCompos</b>	fibrous composition of a yarn product (XPath YARNDesAdvise/YAbody/YAitem/yarnCompos) 0-1
<b>yarnInWrap</b>	details specifying the inner wrapping of a yarn product (XPath YARNDesAdvise/shipInfo/packages/handlingChar/yarnPack/yarnInWrap) 0-1 (XPath YARNDesAdvise/yarnPack/yarnInWrap) 0-1 (XPath YARNDesAdvise/YAbody/YAitem/shipInfo/packages/handlingChar/yarnPack/yarnInWrap) 0-1 (XPath YARNDesAdvise/YAbody/YAitem/yarnPack/yarnInWrap) 0-1
<b>yarnPack</b>	details of type of presentation used for the yarn (XPath YARNDesAdvise/yarnPack) 0-1 (XPath YARNDesAdvise/YAbody/YAitem/yarnPack) 0-1 (XPath YARNDesAdvise/shipInfo/packages/handlingChar/yarnPack) 0-1 (XPath YARNDesAdvise/YAbody/YAitem/shipInfo/packages/handlingChar/yarnPack) 0-1
<b>yarnReel</b>	details of the packaging of a yarn product (bobbin and reel,...) (XPath YARNDesAdvise/YAbody/YAitem/shipInfo/packages/handlingChar/yarnPack/yarnReel) 1-1 (XPath YARNDesAdvise/yarnPack/yarnReel) 1-1 (XPath YARNDesAdvise/YAbody/YAitem/yarnPack/yarnReel) 1-1 (XPath YARNDesAdvise/shipInfo/packages/handlingChar/yarnPack/yarnReel) 1-1
<b>yarnSpecs</b>	technical properties of a yarn product linked to an operation of the sub-contracted production of yarn or to the purchase of yarn



	(XPath YARNDesAdvise/YAbody/YAitem/yarnSpecs) 0-99
--	--

## 2.2.2 Simple elements (Basic Business Information Entities)

Simple elements are those elements whose content is characterized by a data type plus a domain of possible values. Simple elements are alphabetically ordered.

acsPackCode	code specifying the type of wrapping or packing used for the accessory - base type: string, (XPath YARNDesAdvise/YAbody/YAitem/shipInfo/packages/handlingChar/acsPack/acsPackCode) 1-1 (AU) (XPath YARNDesAdvise/shipInfo/packages/handlingChar/acsPack/acsPackCode) 1-1 (AU)
acsPackText	free text specifying the type of wrapping or packing used for the accessory - base type: string, max length: 250, (XPath YARNDesAdvise/shipInfo/packages/handlingChar/acsPack/acsPackText) 1-1 (U) (XPath YARNDesAdvise/YAbody/YAitem/shipInfo/packages/handlingChar/acsPack/acsPackText) 1-1 (U)
actualItemsPerPackage	the quantity of items actually contained in the package - base type: decimal, (XPath YARNDesAdvise/YAbody/YAitem/shipInfo/actualPackageUnit/actualItemsPerPackage) 0-1 (N) (XPath YARNDesAdvise/shipInfo/actualPackageUnit/actualItemsPerPackage) 0-1 (N)
added	additional code of the product (complementing the formers) - base type: string, max length: 80, (XPath YARNDesAdvise/YAbody/YAitem/yarnCode/added) 0-9 - note: <i>here an additional codification (see table T44) can be specified</i>
additionalIdentifier	additional identification code of a Party, for example customs registries or others - base type: string, max length: 15, (XPath YARNDesAdvise/THeader/buyer/additionalIdentifier) 0-9 (N) - note: <i>identifiers for example for exports, such as MID (Manufacturer Identification Code), EORI (E.O.R.I. - Economic Operator Registration and Identification)</i> (XPath YARNDesAdvise/THeader/supplier/additionalIdentifier) 0-9 (N) - note: <i>identifiers for example for exports, such as MID (Manufacturer Identification Code), EORI (E.O.R.I. - Economic Operator Registration and Identification)</i>
@addType	qualifier of the additional coding of a product - base type: string, cod. table: T44 <a href="http://www.ebiz.enea.it/moda-ml/repository/codelist/v2018-1/gc_T44.xml">http://www.ebiz.enea.it/moda-ml/repository/codelist/v2018-1/gc_T44.xml</a> (XPath YARNDesAdvise/YAbody/YAitem/yarnCode/added/@addType) [Optional] - nota: <i>addType allows the clarification of the meaning of the added element content; it is strongly suggested to use it always.</i>
@application	force or similar condition (e.g. no. of revolutions) applied in a test as specified within the standard - base type: string, max length: 15, (XPath YARNDesAdvise/YAbody/YAitem/yarnSpecs/specValue/@application) [Optional] (XPath YARNDesAdvise/YAbody/YAitem/yarnSpecs/experimValue/@application) [Optional]
art	article number of the product - base type: string, max length: 80,

	(XPath YARNDesAdvise/YAbody/YAitem/yarnCode/art) 1-1 (U)
binaryObject	a binary large object containing an attached document, Coding 'base64Binary' is recommended. - base type: base64Binary, (XPath YARNDesAdvise/YAbody/YAitem/refDoc/attachment/binaryObject) 0-1 (N) (XPath YARNDesAdvise/TAheader/refDoc/attachment/binaryObject) 0-1 (N)
carrier	identification of the transport carrier - base type: string, max length: 40, (XPath YARNDesAdvise/YAbody/YAitem/shipInfo/transInfo/carrier) 0-1 (XPath YARNDesAdvise/shipInfo/transInfo/carrier) 0-1
@characterSet	the character set of the binary object (examples UTF-8, UTF-16, Windows-1252, ISO-8859-7,..) - base type: normalizedString, (XPath YARNDesAdvise/YAbody/YAitem/refDoc/attachment/binaryObject/@characterSet) [Optional] (N) (XPath YARNDesAdvise/TAheader/refDoc/attachment/binaryObject/@characterSet) [Optional] (N)
characterSetCode	the character set of an external document (examples UTF-8, UTF-16, Windows-1252, ISO-8859-7,..) - base type: normalizedString, (XPath YARNDesAdvise/TAheader/refDoc/attachment/externalReference/characterSetCode) 0-1 (N) (XPath YARNDesAdvise/YAbody/YAitem/refDoc/attachment/externalReference/characterSetCode) 0-1 (N)
city	name of the city (town, village) - base type: string, max length: 40, (XPath YARNDesAdvise/TAheader/thirdParty/city) 0-1 (XPath YARNDesAdvise/TAheader/supplier/city) 0-1 (XPath YARNDesAdvise/YAbody/YAitem/thirdParty/city) 0-1 (XPath YARNDesAdvise/TAheader/buyer/city) 0-1
@codeList	it specifies the URL where the list of codes used to make an instance of the element can be found - base type: string, max length: 255, (XPath YARNDesAdvise/YAbody/YAitem/yarnCode/art/@codeList) [Optional] - nota: <i>at least one out of this attribute and "numberingOrg" should be set</i> (XPath YARNDesAdvise/TAheader/note/@codeList) [Optional] - nota: <i>must be used to provide (URL) the list of codes used in "noteLabel"</i> (XPath YARNDesAdvise/YAbody/YAitem/refDoc/season/@codeList) [Optional] (a) - nota: <i>this attribute should be used either single or coupled with "listName" and "listVersion"</i> (XPath YARNDesAdvise/shipInfo/actualPackageUnit/note/@codeList) [Optional] - nota: <i>must be used to provide (URL) the list of codes used in "noteLabel"</i> (XPath YARNDesAdvise/shipInfo/actualPackageUnit/itemsList/qualityLevel/@codeList) [Optional] (a) - nota: <i>at least one out of this attribute and "numberingOrg" should be set</i> (XPath YARNDesAdvise/YAbody/YAitem/shipInfo/actualPackageUnit/itemsList/qualityLevel/@codeList) [Optional] (a) - nota: <i>at least one out of this attribute and "numberingOrg" should be set</i> (XPath YARNDesAdvise/shipInfo/packages/handlingChar/acsPack/acsPackCode/@codeList) [Optional] (a) - nota: <i>at least one out of this attribute and "numberingOrg" should be set</i> (XPath YARNDesAdvise/YAbody/YAitem/shipInfo/actualPackageUnit/note/@codeList) [Optional] - nota: <i>must be used to provide (URL) the list of codes used in "noteLabel"</i> (XPath YARNDesAdvise/TAheader/refDoc/season/@codeList) [Optional] (a) - nota: <i>this attribute should be used either single or coupled with "listName" and "listVersion"</i>

	<p>(XPath YARNDesAdvise/YAbody/YAitem/shipInfo/packages/handlingChar/acsPack/acsPackCode/@codeList) [Optional] (a)</p> <p>- nota: <i>at least one out of this attribute and "numberingOrg" should be set</i></p> <p>(XPath YARNDesAdvise/YAbody/YAitem/shipInfo/packages/handlingChar/garPack/garPackCode/@codeList) [Optional] (a)</p> <p>- nota: <i>at least one out of this attribute and "numberingOrg" should be set</i></p> <p>(XPath YARNDesAdvise/YAbody/YAitem/shipInfo/packages/handlingChar/note/@codeList) [Optional]</p> <p>- nota: <i>must be used to provide (URL) the list of codes used in "noteLabel"</i></p> <p>(XPath YARNDesAdvise/YAbody/YAitem/yarnCode/color/@codeList) [Optional]</p> <p>- nota: <i>this attribute should be used either single or coupled with "listName" and "listVersion"</i></p> <p>(XPath YARNDesAdvise/shipInfo/packages/handlingChar/note/@codeList) [Optional]</p> <p>- nota: <i>must be used to provide (URL) the list of codes used in "noteLabel"</i></p> <p>(XPath YARNDesAdvise/YAbody/YAitem/note/@codeList) [Optional]</p> <p>- nota: <i>must be used to provide (URL) the list of codes used in "noteLabel"</i></p> <p>(XPath YARNDesAdvise/YAbody/YAitem/itemsList/qualityLevel/@codeList) [Optional] (a)</p> <p>- nota: <i>at least one out of this attribute and "numberingOrg" should be set</i></p> <p>(XPath YARNDesAdvise/shipInfo/packages/handlingChar/garPack/garPackCode/@codeList) [Optional] (a)</p> <p>- nota: <i>at least one out of this attribute and "numberingOrg" should be set</i></p>
color	<p>colour number of the product, when not included in the model or fabric code</p> <p>- base type: string, max length: 15,</p> <p>(XPath YARNDesAdvise/YAbody/YAitem/yarnCode/color) 0-1</p>
country	<p>code of the nation</p> <p>- base type: string, cod. table: T10</p> <p><a href="http://www.ebiz.enea.it/moda-ml/repository/codelist/v2018-1/gc_T10.xml">http://www.ebiz.enea.it/moda-ml/repository/codelist/v2018-1/gc_T10.xml</a></p> <p>(XPath YARNDesAdvise/THeader/buyer/country) 0-1</p> <p>(XPath YARNDesAdvise/THeader/thirdParty/country) 0-1</p> <p>(XPath YARNDesAdvise/YAbody/YAitem/thirdParty/country) 0-1</p> <p>(XPath YARNDesAdvise/THeader/supplier/country) 0-1</p>
@CV	<p>coefficient of variation (CV) of a measurement</p> <p>- base type: decimal,</p> <p>(XPath YARNDesAdvise/YAbody/YAitem/yarnSpecs/specValue/@CV) [Optional]</p>
@dateForm	<p>format used for the date</p> <p>- base type: string, cod. table: NT29</p> <p><a href="http://www.ebiz.enea.it/moda-ml/repository/codelist/v2018-1/gc_NT29.xml">http://www.ebiz.enea.it/moda-ml/repository/codelist/v2018-1/gc_NT29.xml</a></p> <p>(XPath YARNDesAdvise/YAbody/YAitem/shipInfo/transInfo/delEffectiveDate/@dateForm) [Optional]</p> <p>(XPath YARNDesAdvise/shipInfo/transInfo/despatchDate/@dateForm) [Optional] (a)</p> <p>(XPath YARNDesAdvise/shipInfo/transInfo/delEffectiveDate/@dateForm) [Optional]</p> <p>(XPath YARNDesAdvise/YAbody/YAitem/shipInfo/delEffectiveDate/@dateForm) [Optional]</p> <p>(XPath YARNDesAdvise/THeader/msgDate/@dateForm) [Optional]</p> <p>(XPath YARNDesAdvise/YAbody/YAitem/refDoc/docDate/@dateForm) [Optional]</p> <p>(XPath YARNDesAdvise/YAbody/YAitem/shipInfo/transInfo/despatchDate/@dateForm) [Optional]</p> <p>(XPath YARNDesAdvise/shipInfo/delEffectiveDate/@dateForm) [Optional]</p> <p>(XPath YARNDesAdvise/THeader/refDoc/docDate/@dateForm) [Optional]</p>
delEffectiveDate	<p>effective date of delivery of goods (declared in Despatch), according to one of the patterns YYYY-MM-DD, YYYY-MM-DD:HH-MM or YYYY-WW.</p> <p>- base type: string,</p> <p>(XPath YARNDesAdvise/shipInfo/transInfo/delEffectiveDate) 0-1 (p)</p> <p>(XPath YARNDesAdvise/shipInfo/delEffectiveDate) 0-1</p> <p>(XPath YARNDesAdvise/YAbody/YAitem/shipInfo/delEffectiveDate) 0-1</p> <p>(XPath YARNDesAdvise/YAbody/YAitem/shipInfo/transInfo/delEffectiveDate) 0-1 (p)</p>
deliveryPlace	<p>place of delivery of goods, ultimate or related to a given leg</p> <p>- base type: string, max length: 250,</p>

	(XPath YARNDesAdvise/YAbody/YAitem/shipInfo/transInfo/deliveryPlace) 0-1 (U) (XPath YARNDesAdvise/shipInfo/transInfo/deliveryPlace) 0-1 (U)
dept	name or code of a contact department within a Party - base type: string, max length: 40, (XPath YARNDesAdvise/THeader/buyer/dept) 0-1 (XPath YARNDesAdvise/THeader/thirdParty/dept) 0-1 (XPath YARNDesAdvise/THeader/supplier/dept) 0-1 (XPath YARNDesAdvise/YAbody/YAitem/thirdParty/dept) 0-1
description	free text description. The content of the element must be unique, it might be translated and repeated into more languages (thus no more than one instance for each language). - base type: string, max length: 250, (XPath YARNDesAdvise/YAbody/YAitem/yarnCode/description) 0-unbounded (AU) - note: <i>Product description</i> (XPath YARNDesAdvise/shipInfo/packages/description) 0-unbounded (AU) (XPath YARNDesAdvise/YAbody/YAitem/shipInfo/packages/description) 0-unbounded (AU)
despatchDate	date of despatch of goods, requested or promised in the purchase process, according to one of the patterns YYYY-MM-DD, YYYY-MM-DD:HH-MM or YYYY-WW. - base type: string, (XPath YARNDesAdvise/YAbody/YAitem/shipInfo/transInfo/despatchDate) 0-1 (N) (XPath YARNDesAdvise/shipInfo/transInfo/despatchDate) 0-1 (N)
despatchPlace	place of despatch of goods, origin or related to a given leg - base type: string, max length: 250, (XPath YARNDesAdvise/shipInfo/transInfo/despatchPlace) 0-1 (N) (XPath YARNDesAdvise/YAbody/YAitem/shipInfo/transInfo/despatchPlace) 0-1 (N)
docDate	date of issue of the referenced document, according to one of the patterns YYYY-MM-DD, YYYY-MM-DD:HH-MM or YYYY-WW. - base type: string, (XPath YARNDesAdvise/YAbody/YAitem/refDoc/docDate) 0-1 (XPath YARNDesAdvise/THeader/refDoc/docDate) 0-1
docID	identification number of the referenced document SINCE 2008-1 ITS USE IN THE HEADER IS DISCOURAGED (REPLACED BY msgID) - base type: string, max length: 80, (XPath YARNDesAdvise/THeader/docID) 0-1 (XPath YARNDesAdvise/THeader/refDoc/docID) 1-2 (p) <hr/> <b>AAAA-WARNING! - text not AVAILABLE n. 245 - In=en</b> (XPath YARNDesAdvise/YAbody/YAitem/refDoc/docID) 1-2 (p) <hr/> <b>AAAA-WARNING! - text not AVAILABLE n. 245 - In=en</b>
@docType	type or class to which the referenced document belongs - base type: string, cod. table: T21 <a href="http://www.ebiz.enea.it/moda-ml/repository/codelist/v2018-1/gc_T21.xml">http://www.ebiz.enea.it/moda-ml/repository/codelist/v2018-1/gc_T21.xml</a> (XPath YARNDesAdvise/YAbody/YAitem/refDoc/@docType) [Required] (XPath YARNDesAdvise/THeader/refDoc/@docType) [Required]
dyeN	number of the dying batch of a textile product - base type: string, max length: 15, (XPath YARNDesAdvise/YAbody/YAitem/dyeN) 0-2 - note: <i>The dyeN instances must differ by value of the numberingOrg attribute</i>
@email	electronic mail address of the contact person within a Party - base type: string, max length: 250, (XPath YARNDesAdvise/YAbody/YAitem/thirdParty/person/@email) [Optional] (XPath YARNDesAdvise/THeader/supplier/person/@email) [Optional] (XPath YARNDesAdvise/THeader/buyer/person/@email) [Optional] (XPath YARNDesAdvise/THeader/thirdParty/person/@email) [Optional]

@encoding	<p>specifies the decoding algorithm of the binary object</p> <ul style="list-style-type: none"> <li>- base type: normalizedString,</li> </ul> <p>(XPath YARNDesAdvise/YAbody/YAitem/refDoc/attachment/binaryObject/@encoding) [Optional] (N)</p> <p>(XPath YARNDesAdvise/TAheader/refDoc/attachment/binaryObject/@encoding) [Optional] (N)</p>
encodingCode	<p>the encoding/decoding algorithm used with the external object (example is 'base64Binary')</p> <ul style="list-style-type: none"> <li>- base type: normalizedString,</li> </ul> <p>(XPath YARNDesAdvise/TAheader/refDoc/attachment/externalReference/encodingCode) 0-1 (N)</p> <p>(XPath YARNDesAdvise/YAbody/YAitem/refDoc/attachment/externalReference/encodingCode) 0-1 (N)</p>
EPC	<p>serial identifier used for tracing a physical item with RFID technology</p> <ul style="list-style-type: none"> <li>- base type: string,</li> </ul> <p>(XPath YARNDesAdvise/YAbody/YAitem/shipInfo/packages/EPCList/EPC) 1-unbounded</p> <p>(XPath YARNDesAdvise/shipInfo/packages/EPCList/EPC) 1-unbounded</p>
experimValue	<p>experimental value of the measurement</p> <ul style="list-style-type: none"> <li>- base type: decimal,</li> </ul> <p>(XPath YARNDesAdvise/YAbody/YAitem/yarnSpecs/experimValue) 0-1</p>
@extinction	<p>specified if the referred position (document/line) in refDoc is cleared (exhausted) by this line item. Value: True = exhausted, False = not exhausted</p> <ul style="list-style-type: none"> <li>- base type: boolean,</li> </ul> <p>(XPath YARNDesAdvise/YAbody/YAitem/@extinction) [Optional]</p>
@fax	<p>fax number of the contact person within a Party</p> <ul style="list-style-type: none"> <li>- base type: string, max length: 35,</li> </ul> <p>(XPath YARNDesAdvise/YAbody/YAitem/thirdParty/person/@fax) [Optional]</p> <p>(XPath YARNDesAdvise/TAheader/buyer/person/@fax) [Optional]</p> <p>(XPath YARNDesAdvise/TAheader/thirdParty/person/@fax) [Optional]</p> <p>(XPath YARNDesAdvise/TAheader/supplier/person/@fax) [Optional]</p>
@fibre	<p>type of fibre used in a textile product</p> <ul style="list-style-type: none"> <li>- base type: string, cod. table: T19</li> </ul> <p><a href="http://www.ebiz.enea.it/moda-ml/repository/codelist/v2018-1/gc_T19.xml">http://www.ebiz.enea.it/moda-ml/repository/codelist/v2018-1/gc_T19.xml</a></p> <p>(XPath YARNDesAdvise/YAbody/YAitem/yarnCompos/percCompos/@fibre) [Required]</p>
fileName	<p>unique identifier (name) of the file</p> <ul style="list-style-type: none"> <li>- base type: string, max length: 255,</li> </ul> <p>(XPath YARNDesAdvise/TAheader/refDoc/attachment/fileName) 0-1 (N)</p> <p>(XPath YARNDesAdvise/YAbody/YAitem/refDoc/attachment/fileName) 0-1 (N)</p>
fillingCriterion	<p>the assortment criterion to fill the specified kind of package: it states the homogeneity criterion (eg: "model", "color", "size").</p> <ul style="list-style-type: none"> <li>- base type: string, cod. table: NT51</li> </ul> <p><a href="http://www.ebiz.enea.it/moda-ml/repository/codelist/v2018-1/gc_NT51.xml">http://www.ebiz.enea.it/moda-ml/repository/codelist/v2018-1/gc_NT51.xml</a></p> <p>(XPath YARNDesAdvise/YAbody/YAitem/shipInfo/packages/fillingCriterion) 0-9 (N)</p> <p>(XPath YARNDesAdvise/shipInfo/packages/fillingCriterion) 0-9 (N)</p>
@format	<p>the format of the binary content (examples xml, pdf, doc,...)</p> <ul style="list-style-type: none"> <li>- base type: string,</li> </ul> <p>(XPath YARNDesAdvise/TAheader/refDoc/attachment/binaryObject/@format) [Optional] (N)</p> <p>(XPath YARNDesAdvise/YAbody/YAitem/refDoc/attachment/binaryObject/@format) [Optional] (N)</p>
formatCode	<p>the format of the external object (examples xml, pdf, doc,...)</p> <ul style="list-style-type: none"> <li>- base type: normalizedString,</li> </ul> <p>(XPath YARNDesAdvise/YAbody/YAitem/refDoc/attachment/externalReference/formatCode) 0-1 (N)</p>

	(XPath YARNDesAdvise/THeader/refDoc/attachment/externalReference/formatCode) 0-1 (N)
garPackCode	a code specifying the type of packaging used for the item. - base type: string, (XPath YARNDesAdvise/shipInfo/packages/handlingChar/garPack/garPackCode) 1-1 (N) (XPath YARNDesAdvise/YAbody/YAitem/shipInfo/packages/handlingChar/garPack/garPackCode) 1-1 (N)
garPackText	a free text specifying the type of packaging used for the item. - base type: string, (XPath YARNDesAdvise/shipInfo/packages/handlingChar/garPack/garPackText) 1-1 (N) (XPath YARNDesAdvise/YAbody/YAitem/shipInfo/packages/handlingChar/garPack/garPackText) 1-1 (N)
grossWeight	the gross weight, declared for transport or customs purpose - base type: decimal, min inclusive: 0, fraction digits: 2, (XPath YARNDesAdvise/shipInfo/transInfo/grossWeight) 0-1 (XPath YARNDesAdvise/YAbody/YAitem/shipInfo/transInfo/grossWeight) 0-1 (XPath YARNDesAdvise/shipInfo/actualPackageUnit/grossWeight) 0-1 (XPath YARNDesAdvise/shipInfo/packages/handlingChar/grossWeight) 0-1 (XPath YARNDesAdvise/YAbody/YAitem/shipInfo/packages/handlingChar/grossWeight) 0-1 (XPath YARNDesAdvise/YAbody/YAitem/shipInfo/actualPackageUnit/grossWeight) 0-1
handlingType	information to handle the item (eg "breakable"). - base type: string, (XPath YARNDesAdvise/YAbody/YAitem/shipInfo/packages/handlingChar/handlingType) 0-1 (N) (XPath YARNDesAdvise/shipInfo/packages/handlingChar/handlingType) 0-1 (N)
height	effective height of a specified object - base type: decimal, min inclusive: 0, fraction digits: 2, (XPath YARNDesAdvise/shipInfo/actualPackageUnit/packageDim/height) 0-1 (XPath YARNDesAdvise/YAbody/YAitem/shipInfo/packages/packageDim/height) 0-1 (XPath YARNDesAdvise/shipInfo/packages/packageDim/height) 0-1 (XPath YARNDesAdvise/YAbody/YAitem/shipInfo/actualPackageUnit/packageDim/height) 0-1
id	primary identification code of a Party; it is recommended the format: nation code (ISO 3166) + VAT identification number (11 crt), with the qualifier "numberingOrg"= MF - base type: string, max length: 15, (XPath YARNDesAdvise/THeader/supplier/id) 1-1 (XPath YARNDesAdvise/YAbody/YAitem/thirdParty/id) 1-1 (XPath YARNDesAdvise/THeader/buyer/id) 1-1 (p) (XPath YARNDesAdvise/THeader/thirdParty/id) 1-1
@idCO	primary identification code of the Party executing the test; it is recommended the format: nation code (ISO 3166) + VAT identification number (11 crt). - base type: string, max length: 15, (XPath YARNDesAdvise/YAbody/YAitem/yarnSpecs/experimValue/@idCO) [Optional]
@idQualifier	Qualification of the identifier. - base type: string, (XPath YARNDesAdvise/THeader/supplier/additionalIdentifier/@idQualifier) [Optional] (Na)

	<p>- nota: <i>this attribute should be used when the numberingOrg attribute is not enough to declare the type of identifier</i> (XPath YARNDesAdvise/YAbody/YAitem/shipInfo/actualPackageUnit/packageIdentification/serialN/@idQualifier) [Optional] (N)</p> <p>- nota: <i>this attribute should be used when the numberingOrg attribute is not enough to declare the type of serial identifier</i> (XPath YARNDesAdvise/YAbody/YAitem/itemsList/itemIdentification/serialN/@idQualifier) [Optional] (N)</p> <p>- nota: <i>this attribute should be used when the numberingOrg attribute is not enough to declare the type of serial identifier</i> (XPath YARNDesAdvise/YAbody/YAitem/shipInfo/actualPackageUnit/itemsList/itemIdentification/serialN/@idQualifier) [Optional] (N)</p> <p>- nota: <i>this attribute should be used when the numberingOrg attribute is not enough to declare the type of serial identifier</i> (XPath YARNDesAdvise/shipInfo/actualPackageUnit/itemsList/itemIdentification/serialN/@idQualifier) [Optional] (N)</p> <p>- nota: <i>this attribute should be used when the numberingOrg attribute is not enough to declare the type of serial identifier</i> (XPath YARNDesAdvise/TAheader/buyer/additionalIdentifier/@idQualifier) [Optional] (Na)</p> <p>- nota: <i>this attribute should be used when the numberingOrg attribute is not enough to declare the type of identifier</i> (XPath YARNDesAdvise/YAbody/YAitem/shipInfo/actualPackageUnit/packagesList/packageIdentification/serialN/@idQualifier) [Optional] (N)</p> <p>- nota: <i>this attribute should be used when the numberingOrg attribute is not enough to declare the type of serial identifier</i> (XPath YARNDesAdvise/shipInfo/actualPackageUnit/packagesList/packageIdentification/serialN/@idQualifier) [Optional] (N)</p> <p>- nota: <i>this attribute should be used when the numberingOrg attribute is not enough to declare the type of serial identifier</i> (XPath YARNDesAdvise/shipInfo/actualPackageUnit/packageIdentification/serialN/@idQualifier) [Optional] (N)</p> <p>- nota: <i>this attribute should be used when the numberingOrg attribute is not enough to declare the type of serial identifier</i></p>
incoTerm	<p>specification of the terms of trade (INCOTERMS) - base type: string, cod. table: T3 <a href="http://www.ebiz.enea.it/moda-ml/repository/codelist/v2018-1/gc_T3.xml">http://www.ebiz.enea.it/moda-ml/repository/codelist/v2018-1/gc_T3.xml</a> (XPath YARNDesAdvise/trade/incoTerm) 1-1</p>
incoTermText	<p>free text specifying the terms of trade (incoterm, location) - base type: string, max length: 250, (XPath YARNDesAdvise/trade/incoTermText) 1-1 (U)</p>
@isURL	<p>it indicates if the referred element is an URL (true) or not (false) - base type: boolean, (XPath YARNDesAdvise/TAheader/refDoc/attachment/externalReference/uri/@isURL) [Optional] [Default= true] (Na)</p> <p>- nota: <i>usage of URLs is recommended</i> (XPath YARNDesAdvise/YAbody/YAitem/refDoc/attachment/externalReference/uri/@isURL) [Optional] [Default= true] (Na)</p> <p>- nota: <i>usage of URLs is recommended</i></p>
itemID	<p>number of the line/item of the referenced document - base type: string, max length: 40, (XPath YARNDesAdvise/YAbody/YAitem/refDoc/itemID) 0-1 (U) (XPath YARNDesAdvise/TAheader/refDoc/itemID) 0-1 (U)</p>
itemsPerPackage	<p>the quantity of items that can be contained in a package. - base type: decimal, (XPath YARNDesAdvise/shipInfo/packages/itemsPerPackage) 0-1 (N)</p>

	(XPath YARNDesAdvise/YAbody/YAitem/shipInfo/packages/itemsPerPackage) 0-1 (N)
label	<p>indicates if the physical object specified has to be labelled</p> <p>- base type: boolean,</p> <p>(XPath YARNDesAdvise/YAbody/YAitem/shipInfo/packages/handlingChar/yarnPack/yarnInWrap/label) 0-1</p> <p>(XPath YARNDesAdvise/yarnPack/yarnReel/label) 0-1</p> <p>(XPath YARNDesAdvise/YAbody/YAitem/yarnPack/yarnInWrap/label) 0-1</p> <p>(XPath YARNDesAdvise/YAbody/YAitem/shipInfo/packages/handlingChar/yarnPack/yarnReel/label) 0-1</p> <p>(XPath YARNDesAdvise/shipInfo/packages/handlingChar/yarnPack/yarnReel/label) 0-1</p> <p>(XPath YARNDesAdvise/YAbody/YAitem/yarnPack/yarnReel/label) 0-1</p> <p>(XPath YARNDesAdvise/shipInfo/packages/handlingChar/yarnPack/yarnInWrap/label) 0-1</p> <p>(XPath YARNDesAdvise/yarnPack/yarnInWrap/label) 0-1</p>
labelWrit	<p>text that must be written on the lable of a specified physical object when its customization is required</p> <p>- base type: string, max length: 350,</p> <p>(XPath YARNDesAdvise/YAbody/YAitem/yarnPack/yarnReel/labelWrit) 0-1</p> <p>(XPath YARNDesAdvise/shipInfo/packages/handlingChar/yarnPack/yarnReel/labelWrit) 0-1</p> <p>(XPath YARNDesAdvise/YAbody/YAitem/shipInfo/packages/handlingChar/yarnPack/yarnInWrap/labelWrit) 0-1</p> <p>(XPath YARNDesAdvise/YAbody/YAitem/shipInfo/packages/handlingChar/yarnPack/yarnReel/labelWrit) 0-1</p> <p>(XPath YARNDesAdvise/yarnPack/yarnReel/labelWrit) 0-1</p> <p>(XPath YARNDesAdvise/yarnPack/yarnInWrap/labelWrit) 0-1</p> <p>(XPath YARNDesAdvise/shipInfo/packages/handlingChar/yarnPack/yarnInWrap/labelWrit) 0-1</p> <p>(XPath YARNDesAdvise/YAbody/YAitem/yarnPack/yarnInWrap/labelWrit) 0-1</p>
legalName	<p>legal name of a Party</p> <p>- base type: string, max length: 250,</p> <p>(XPath YARNDesAdvise/YAbody/YAitem/thirdParty/legalName) 0-1 (U)</p> <p>(XPath YARNDesAdvise/THeader/buyer/legalName) 0-1 (U)</p> <p>(XPath YARNDesAdvise/THeader/thirdParty/legalName) 0-1 (U)</p> <p>(XPath YARNDesAdvise/THeader/supplier/legalName) 0-1 (U)</p>
length	<p>effective length of a specified object</p> <p>- base type: decimal, min inclusive: 0, fraction digits: 2,</p> <p>(XPath YARNDesAdvise/YAbody/YAitem/shipInfo/actualPackageUnit/packageDim/length) 1-1</p> <p>- note: <i>here the maximum dimension must also be specified</i></p> <p>(XPath YARNDesAdvise/shipInfo/actualPackageUnit/packageDim/length) 1-1</p> <p>- note: <i>here the maximum dimension must also be specified</i></p> <p>(XPath YARNDesAdvise/YAbody/YAitem/shipInfo/packages/packageDim/length) 1-1</p> <p>- note: <i>here the maximum dimension must also be specified</i></p> <p>(XPath YARNDesAdvise/shipInfo/packages/packageDim/length) 1-1</p> <p>- note: <i>here the maximum dimension must also be specified</i></p>
lineN	<p>number of the line item of the present message (xml document); it is set by the role that produces the document. Usually it is a progressive number, but not always.</p> <p>- base type: positiveInteger, min inclusive: 1, max inclusive: 9999,</p> <p>(XPath YARNDesAdvise/YAbody/YAitem/lineN) 1-1</p>
@listName	<p>the name of the list of codes used to make an instance of the element (it might be thought as descriptive element, i.e. 'fabric printing technologies', or not, i.e. "T264")</p> <p>- base type: string, max length: 40,</p> <p>(XPath YARNDesAdvise/THeader/refDoc/season/@listName) [Optional] (a)</p>



	<ul style="list-style-type: none"> <li>- nota: <i>this attribute should always be used coupled with “numberingOrg”</i> (XPath YARNDesAdvise/YAbody/YAitem/yarnCode/art/@listName) [Optional]</li> <li>- nota: <i>this attribute should always be used coupled with “numberingOrg”</i> (XPath YARNDesAdvise/YAbody/YAitem/yarnCode/color/@listName) [Optional]</li> <li>- nota: <i>this attribute should always be used coupled with “numberingOrg”</i> (XPath YARNDesAdvise/YAbody/YAitem/shipInfo/packages/handlingChar/acsPack/acsPackCode/@listName) [Optional] (a)</li> <li>- nota: <i>this attribute should always be used coupled with “numberingOrg”</i> (XPath YARNDesAdvise/shipInfo/packages/handlingChar/garPack/garPackCode/@listName) [Optional] (a)</li> <li>- nota: <i>this attribute should always be used coupled with “numberingOrg”</i> (XPath YARNDesAdvise/shipInfo/packages/handlingChar/acsPack/acsPackCode/@listName) [Optional] (a)</li> <li>- nota: <i>this attribute should always be used coupled with “numberingOrg”</i> (XPath YARNDesAdvise/YAbody/YAitem/refDoc/season/@listName) [Optional] (a)</li> <li>- nota: <i>this attribute should always be used coupled with “numberingOrg”</i> (XPath YARNDesAdvise/YAbody/YAitem/shipInfo/actualPackageUnit/itemsList/qualityLevel/@listName) [Optional] (a)</li> <li>- nota: <i>this attribute should always be used coupled with “numberingOrg”</i> (XPath YARNDesAdvise/YAbody/YAitem/itemsList/qualityLevel/@listName) [Optional] (a)</li> <li>- nota: <i>this attribute should always be used coupled with “numberingOrg”</i> (XPath YARNDesAdvise/shipInfo/actualPackageUnit/itemsList/qualityLevel/@listName) [Optional] (a)</li> <li>- nota: <i>this attribute should always be used coupled with “numberingOrg”</i> (XPath YARNDesAdvise/YAbody/YAitem/shipInfo/packages/handlingChar/garPack/garPackCode/@listName) [Optional] (a)</li> <li>- nota: <i>this attribute should always be used coupled with “numberingOrg”</i></li> </ul>
<p>@listVersion</p>	<p>it specifies the version of the list of codes used to make an instance of the element</p> <ul style="list-style-type: none"> <li>- base type: string, max length: 6, (XPath YARNDesAdvise/shipInfo/packages/handlingChar/garPack/garPackCode/@listVersion) [Optional] (a)</li> <li>- nota: <i>this attribute should always be used coupled with “numberingOrg” and “listName”</i> (XPath YARNDesAdvise/shipInfo/packages/handlingChar/acsPack/acsPackCode/@listVersion) [Optional] (a)</li> <li>- nota: <i>this attribute should always be used coupled with “numberingOrg” and “listName”</i> (XPath YARNDesAdvise/YAbody/YAitem/shipInfo/packages/handlingChar/garPack/garPackCode/@listVersion) [Optional] (a)</li> <li>- nota: <i>this attribute should always be used coupled with “numberingOrg” and “listName”</i> (XPath YARNDesAdvise/YAbody/YAitem/itemsList/qualityLevel/@listVersion) [Optional] (a)</li> <li>- nota: <i>this attribute should always be used coupled with “numberingOrg” and “listName”</i> (XPath YARNDesAdvise/YAbody/YAitem/refDoc/season/@listVersion) [Optional] (a)</li> <li>- nota: <i>this attribute should always be used coupled with “numberingOrg” and “listName”</i> (XPath YARNDesAdvise/YAbody/YAitem/shipInfo/packages/handlingChar/acsPack/acsPackCode/@listVersion) [Optional] (a)</li> <li>- nota: <i>this attribute should always be used coupled with “numberingOrg” and “listName”</i> (XPath YARNDesAdvise/THeader/refDoc/season/@listVersion) [Optional] (a)</li> <li>- nota: <i>this attribute should always be used coupled with “numberingOrg” and “listName”</i> (XPath YARNDesAdvise/YAbody/YAitem/yarnCode/color/@listVersion) [Optional]</li> <li>- nota: <i>this attribute should always be used coupled with “numberingOrg” and “listName”</i> (XPath YARNDesAdvise/shipInfo/actualPackageUnit/itemsList/qualityLevel/@listVersion) [Optional] (a)</li> </ul>

	<p>- nota: <i>this attribute should always be used coupled with “numberingOrg” and “listName”</i>  (XPath <a href="#">YARNDesAdvise/YAbody/YAitem/shipInfo/actualPackageUnit/itemsList/qualityLevel/@listVersion</a>) [Optional] (a)</p> <p>- nota: <i>this attribute should always be used coupled with “numberingOrg” and “listName”</i>  (XPath <a href="#">YARNDesAdvise/YAbody/YAitem/yarnCode/art/@listVersion</a>) [Optional]</p> <p>- nota: <i>this attribute should always be used coupled with “numberingOrg” and “listName”</i></p>
@In	<p>Language code.  - base type: string, cod. table: NT60  <a href="http://www.ebiz.enea.it/moda-ml/repository/codelist/v2018-1/gc_NT60.xml">http://www.ebiz.enea.it/moda-ml/repository/codelist/v2018-1/gc_NT60.xml</a>  (XPath <a href="#">YARNDesAdvise/YAbody/YAitem/shipInfo/packages/description/@In</a>) [Optional] (N)  (XPath <a href="#">YARNDesAdvise/YAbody/YAitem/shipInfo/packages/handlingChar/handlingType/@In</a>) [Optional] (Na)  (XPath <a href="#">YARNDesAdvise/YAbody/YAitem/yarnCode/description/@In</a>) [Optional] (N)  (XPath <a href="#">YARNDesAdvise/shipInfo/packages/handlingChar/handlingType/@In</a>) [Optional] (N)  (XPath <a href="#">YARNDesAdvise/shipInfo/packages/description/@In</a>) [Optional] (N)</p>
location	<p>specification of a location  - base type: string, max length: 40,  (XPath <a href="#">YARNDesAdvise/trade/location</a>) 0-1  - note: <i>place to which the INCOTERM applies</i></p>
@logo	<p>company logo (URL of the image jpeg or gif). It is recommended that the width of the image does not exceed 640 pixel.  - base type: string, max length: 255,  (XPath <a href="#">YARNDesAdvise/THeader/supplier/@logo</a>) [Optional]  (XPath <a href="#">YARNDesAdvise/THeader/buyer/@logo</a>) [Optional]</p>
lotN	<p>lot number of a product or batch number of the raw material  - base type: string, max length: 15,  (XPath <a href="#">YARNDesAdvise/YAbody/YAitem/lotN</a>) 0-2  - note: <i>The lotN instances must differ by value of the numberingOrg attribute</i></p>
@LRI	<p>attribute usable to format a string according to a customized User rule (local rule)  - base type: string, cod. table: NT3  <a href="http://www.ebiz.enea.it/moda-ml/repository/codelist/v2018-1/gc_NT3.xml">http://www.ebiz.enea.it/moda-ml/repository/codelist/v2018-1/gc_NT3.xml</a>  (XPath <a href="#">YARNDesAdvise/trade/location/@LRI</a>) [Optional]</p>
@method	<p>standard protocol or method employed in a test to evaluate a characteristic or a parameter  - base type: string, max length: 80,  (XPath <a href="#">YARNDesAdvise/YAbody/YAitem/yarnSpecs/experimValue/@method</a>) [Optional]  - nota: <i>we recommend the specification of the method of measure only when different from the one of the MODA-ML coding system</i>  (XPath <a href="#">YARNDesAdvise/YAbody/YAitem/yarnSpecs/specValue/@method</a>) [Optional]</p>
@mime	<p>the mime type of the binary object  - base type: normalizedString,  (XPath <a href="#">YARNDesAdvise/YAbody/YAitem/refDoc/attachment/binaryObject/@mime</a>) [Optional] (N)  (XPath <a href="#">YARNDesAdvise/THeader/refDoc/attachment/binaryObject/@mime</a>) [Optional] (N)</p>
mimeCode	<p>mime type of the external object  - base type: normalizedString,  (XPath <a href="#">YARNDesAdvise/YAbody/YAitem/refDoc/attachment/externalReference/mimeCode</a>) 0-1 (N)</p>

	<p>AAAA-WARNING! - text not AVAILABLE n. 245 - In=en  (XPath YARNDesAdvise/THeader/refDoc/attachment/externalReference/mimeType) 0-1 (N)</p> <hr/> <p>AAAA-WARNING! - text not AVAILABLE n. 245 - In=en</p>
minItemsPerPackage	<p>the minimum quantity of items for the specified kind of package.  - base type: decimal, min inclusive: 0,  (XPath YARNDesAdvise/YAbody/YAitem/shipInfo/packages/minItemsPerPackage) 0-1 (N)  (XPath YARNDesAdvise/shipInfo/packages/minItemsPerPackage) 0-1 (N)</p>
msgDate	<p>date of issue of the present message (xml document), according to one of the patterns YYYY-MM-DD, YYYY-MM-DD:HH-MM or YYYY-WW.  - base type: string,  (XPath YARNDesAdvise/THeader/msgDate) 1-1</p>
@msgfunction	<p>function performed by the present message with regards to the transmission  - base type: string, cod. table: NT18  <a href="http://www.ebiz.enea.it/moda-ml/repository/codelist/v2018-1/gc_NT18.xml">http://www.ebiz.enea.it/moda-ml/repository/codelist/v2018-1/gc_NT18.xml</a>  (XPath YARNDesAdvise/@msgfunction) [Optional] [Default= OR]</p>
msgID	<p>key identifier of the business document in the information system of the issuing Party. In case of more despatches of the same business document, it is unchanged.  - base type: string, max length: 35,  (XPath YARNDesAdvise/THeader/msgID) 0-1</p>
msgN	<p>identification number given to the message (xml document) by its issuer. In case of more despatches of the same business document, it changes.  - base type: string, max length: 35,  (XPath YARNDesAdvise/THeader/msgN) 1-1</p>
netWeight	<p>the net weight declared for transport or customs purpose  - base type: decimal, min inclusive: 0, fraction digits: 2,  (XPath YARNDesAdvise/shipInfo/transInfo/netWeight) 0-1  (XPath YARNDesAdvise/YAbody/YAitem/shipInfo/packages/handlingChar/netWeight) 0-1  (XPath YARNDesAdvise/YAbody/YAitem/shipInfo/transInfo/netWeight) 0-1  (XPath YARNDesAdvise/shipInfo/packages/handlingChar/netWeight) 0-1 (p)  (XPath YARNDesAdvise/YAbody/YAitem/shipInfo/actualPackageUnit/netWeight) 0-1  (XPath YARNDesAdvise/shipInfo/actualPackageUnit/netWeight) 0-1</p>
note	<p>free text or structured (computer processing) note. For note structuring use the attributes "noteLabel" and "codelist"  - base type: string, max length: 350,  (XPath YARNDesAdvise/YAbody/YAitem/shipInfo/packages/handlingChar/note) 0-99  (XPath YARNDesAdvise/shipInfo/actualPackageUnit/note) 0-99  (XPath YARNDesAdvise/YAbody/YAitem/note) 0-99  (XPath YARNDesAdvise/THeader/note) 0-99  (XPath YARNDesAdvise/YAbody/YAitem/shipInfo/actualPackageUnit/note) 0-99  (XPath YARNDesAdvise/shipInfo/packages/handlingChar/note) 0-99</p>
@noteLabel	<p>subject qualifier of a note  - base type: string, max length: 35,  (XPath YARNDesAdvise/YAbody/YAitem/shipInfo/packages/handlingChar/note/@noteLabel) [Optional]  - nota: <i>must be used to qualify the subject of the note</i>  (XPath YARNDesAdvise/shipInfo/packages/handlingChar/note/@noteLabel) [Optional]  - nota: <i>must be used to qualify the subject of the note</i>  (XPath YARNDesAdvise/shipInfo/actualPackageUnit/note/@noteLabel) [Optional]  - nota: <i>must be used to qualify the subject of the note</i>  (XPath YARNDesAdvise/THeader/note/@noteLabel) [Optional]  - nota: <i>must be used to qualify the subject of the note</i></p>

	<p>(XPath YARNDesAdvise/YAbody/YAitem/note/@noteLabel) [Optional]  - nota: <i>must be used to qualify the subject of the note</i></p> <p>(XPath YARNDesAdvise/YAbody/YAitem/shipInfo/actualPackageUnit/note/@noteLabel) [Optional]  - nota: <i>must be used to qualify the subject of the note</i></p>
@numberingOrg	<p>code specifying the organisation who has created or owns the coding or numbering system</p> <p>- base type: string, cod. table: NT6  <a href="http://www.ebiz.enea.it/moda-ml/repository/codelist/v2018-1/gc_NT6.xml">http://www.ebiz.enea.it/moda-ml/repository/codelist/v2018-1/gc_NT6.xml</a></p> <p>(XPath YARNDesAdvise/YAbody/YAitem/shipInfo/packages/packageN/@numberingOrg) [Optional]  (XPath YARNDesAdvise/YAbody/YAitem/yarnCode/color/@numberingOrg) [Optional]  - nota: <i>this attribute should be used either single or coupled with "listName" and "listVersion"</i></p> <p>(XPath YARNDesAdvise/YAbody/YAitem/yarnCode/added/@numberingOrg) [Optional]  - nota: <i>this attribute should be used either single or coupled with "listName" and "listVersion"</i></p> <p>(XPath YARNDesAdvise/THeader/buyer/id/@numberingOrg) [Optional]  (XPath YARNDesAdvise/YAbody/YAitem/note/@numberingOrg) [Optional]  - nota: <i>must be used to specify the organization that created the list of codes used in "noteLabel"</i></p> <p>(XPath YARNDesAdvise/YAbody/YAitem/shipInfo/packages/packageModelCode/@numberingOrg) [Optional]  (XPath YARNDesAdvise/THeader/supplier/additionalIdentifier/@numberingOrg) [Optional] (a)  - nota: <i>here the issuer of the identifier must be specified</i></p> <p>(XPath YARNDesAdvise/THeader/supplier/id/@numberingOrg) [Optional]  (XPath YARNDesAdvise/shipInfo/packages/handlingChar/acsPack/acsPackCode/@numberingOrg) [Optional] (a)  - nota: <i>this attribute should be used either single or coupled with "listName" and "listVersion"</i></p> <p>(XPath YARNDesAdvise/THeader/buyer/additionalIdentifier/@numberingOrg) [Optional] (a)  - nota: <i>here the issuer of the identifier must be specified</i></p> <p>(XPath YARNDesAdvise/shipInfo/packages/handlingChar/note/@numberingOrg) [Optional]  - nota: <i>must be used to specify the organization that created the list of codes used in "noteLabel"</i></p> <p>(XPath YARNDesAdvise/YAbody/YAitem/shipInfo/packages/handlingChar/acsPack/acsPackCode/@numberingOrg) [Optional] (a)  - nota: <i>this attribute should be used either single or coupled with "listName" and "listVersion"</i></p> <p>(XPath YARNDesAdvise/YAbody/YAitem/shipInfo/packages/handlingChar/note/@numberingOrg) [Optional]  - nota: <i>must be used to specify the organization that created the list of codes used in "noteLabel"</i></p> <p>(XPath YARNDesAdvise/YAbody/YAitem/packageN/@numberingOrg) [Optional]  (XPath YARNDesAdvise/THeader/thirdParty/id/@numberingOrg) [Optional]  (XPath YARNDesAdvise/shipInfo/packages/handlingChar/garPack/garPackCode/@numberingOrg) [Optional] (a)  - nota: <i>this attribute should be used either single or coupled with "listName" and "listVersion"</i></p> <p>(XPath YARNDesAdvise/YAbody/YAitem/shipInfo/packages/handlingChar/garPack/garPackCode/@numberingOrg) [Optional] (a)  - nota: <i>this attribute should be used either single or coupled with "listName" and "listVersion"</i></p> <p>(XPath YARNDesAdvise/YAbody/YAitem/thirdParty/id/@numberingOrg) [Optional]  (XPath YARNDesAdvise/YAbody/YAitem/lotN/@numberingOrg) [Optional]  (XPath YARNDesAdvise/YAbody/YAitem/dyeN/@numberingOrg) [Optional]</p>

	<p>(XPath YARNDesAdvise/YAbody/YAitem/refDoc/season/@numberingOrg) [Optional] (a)</p> <p>- nota: <i>this attribute should be used either single or coupled with "listName" and "listVersion"</i></p> <p>(XPath YARNDesAdvise/shipInfo/actualPackageUnit/itemsList/itemIdentification/serialN/@numberingOrg) [Optional]</p> <p>- nota: <i>here the issuer of the serial number must be specified (when different from the Supplier)</i></p> <p>(XPath YARNDesAdvise/YAbody/YAitem/shipInfo/actualPackageUnit/packageIdentification/serialN/@numberingOrg) [Optional]</p> <p>- nota: <i>here the issuer of the serial number must be specified (when different from the Supplier)</i></p> <p>(XPath YARNDesAdvise/shipInfo/actualPackageUnit/packageIdentification/serialN/@numberingOrg) [Optional]</p> <p>- nota: <i>here the issuer of the serial number must be specified (when different from the Supplier)</i></p> <p>(XPath YARNDesAdvise/shipInfo/packages/EPCList/EPC/@numberingOrg) [Optional]</p> <p>(XPath YARNDesAdvise/shipInfo/actualPackageUnit/itemsList/qualityLevel/@numberingOrg) [Optional] (a)</p> <p>- nota: <i>this attribute should be used either single or coupled with "listName" and "listVersion"</i></p> <p>(XPath YARNDesAdvise/shipInfo/packages/packageModelCode/@numberingOrg) [Optional] (a)</p> <p>(XPath YARNDesAdvise/YAbody/YAitem/shipInfo/actualPackageUnit/packageIdentification/packageN/@numberingOrg) [Optional]</p> <p>(XPath YARNDesAdvise/YAbody/YAitem/refDoc/docID/@numberingOrg) [Optional]</p> <p>- nota: <i>here can be specified whose document numbering is used (e.g.: Client, Supplier, ..)</i></p> <p>(XPath YARNDesAdvise/YAbody/YAitem/shipInfo/actualPackageUnit/packagesList/packageIdentification/serialN/@numberingOrg) [Optional]</p> <p>- nota: <i>here the issuer of the serial number must be specified (when different from the Supplier)</i></p> <p>(XPath YARNDesAdvise/YAbody/YAitem/shipInfo/actualPackageUnit/packageModelCode/@numberingOrg) [Optional] (a)</p> <p>(XPath YARNDesAdvise/shipInfo/actualPackageUnit/packageIdentification/packageN/@numberingOrg) [Optional]</p> <p>(XPath YARNDesAdvise/YAbody/YAitem/shipInfo/actualPackageUnit/packagesList/packageIdentification/packageN/@numberingOrg) [Optional]</p> <p>(XPath YARNDesAdvise/YAbody/YAitem/shipInfo/actualPackageUnit/itemsList/qualityLevel/@numberingOrg) [Optional] (a)</p> <p>- nota: <i>this attribute should be used either single or coupled with "listName" and "listVersion"</i></p> <p>(XPath YARNDesAdvise/shipInfo/actualPackageUnit/note/@numberingOrg) [Optional]</p> <p>- nota: <i>must be used to specify the organization that created the list of codes used in "noteLabel"</i></p> <p>(XPath YARNDesAdvise/YAbody/YAitem/itemsList/qualityLevel/@numberingOrg) [Optional] (a)</p> <p>- nota: <i>this attribute should be used either single or coupled with "listName" and "listVersion"</i></p> <p>(XPath YARNDesAdvise/THeader/refDoc/season/@numberingOrg) [Optional] (a)</p> <p>- nota: <i>this attribute should be used either single or coupled with "listName" and "listVersion"</i></p> <p>(XPath YARNDesAdvise/YAbody/YAitem/itemsList/itemIdentification/serialN/@numberingOrg) [Optional]</p> <p>- nota: <i>here the issuer of the serial number must be specified (when different from the Supplier)</i></p>
--	---

	<p>(XPath YARNDesAdvise/YAbody/YAitem/shipInfo/actualPackageUnit/note/@numberingOrg) [Optional]  - nota: <i>must be used to specify the organization that created the list of codes used in "noteLabel"</i></p> <p>(XPath YARNDesAdvise/shipInfo/packages/packageN/@numberingOrg) [Optional]  (XPath YARNDesAdvise/THeader/note/@numberingOrg) [Optional]  - nota: <i>must be used to specify the organization that created the list of codes used in "noteLabel"</i></p> <p>(XPath YARNDesAdvise/shipInfo/actualPackageUnit/packageModelCode/@numberingOrg) [Optional]  (XPath YARNDesAdvise/THeader/docID/@numberingOrg) [Optional]  - nota: <i>here can be specified whose document numbering is used (e.g.: Client, Supplier, ..)</i></p> <p>(XPath YARNDesAdvise/YAbody/YAitem/shipInfo/packages/EPClist/EPC/@numberingOrg) [Optional]  (XPath YARNDesAdvise/YAbody/YAitem/yarnCode/@numberingOrg) [Optional] [Default= CL]  (XPath YARNDesAdvise/YAbody/YAitem/yarnCode/art/@numberingOrg) [Optional]  - nota: <i>this attribute should be used either single or coupled with "listName" and "listVersion"</i></p> <p>(XPath YARNDesAdvise/THeader/refDoc/docID/@numberingOrg) [Optional]  - nota: <i>here can be specified whose document numbering is used (e.g.: Client, Supplier, ..)</i></p> <p>(XPath YARNDesAdvise/shipInfo/actualPackageUnit/packagesList/packageIdentification/serialN/@numberingOrg) [Optional]  - nota: <i>here the issuer of the serial number must be specified (when different from the Supplier)</i></p> <p>(XPath YARNDesAdvise/shipInfo/actualPackageUnit/packagesList/packageIdentification/packageN/@numberingOrg) [Optional]  (XPath YARNDesAdvise/YAbody/YAitem/shipInfo/actualPackageUnit/itemsList/itemIdentification/serialN/@numberingOrg) [Optional]  - nota: <i>here the issuer of the serial number must be specified (when different from the Supplier)</i></p> <p>(XPath YARNDesAdvise/THeader/refDoc/attachment/fileName/@numberingOrg) [Optional] (a)  (XPath YARNDesAdvise/YAbody/YAitem/refDoc/attachment/fileName/@numberingOrg) [Optional]</p>
package	<p>code specifying the type of transport package  - base type: string, cod. table: T11  <a href="http://www.ebiz.enea.it/moda-ml/repository/codelist/v2018-1/gc_T11.xml">http://www.ebiz.enea.it/moda-ml/repository/codelist/v2018-1/gc_T11.xml</a>  (XPath YARNDesAdvise/YAbody/YAitem/shipInfo/packages/package) 1-1  (XPath YARNDesAdvise/shipInfo/actualPackageUnit/package) 0-1 (p)  (XPath YARNDesAdvise/YAbody/YAitem/shipInfo/actualPackageUnit/package) 0-1 (p)  (XPath YARNDesAdvise/shipInfo/packages/package) 1-1</p>
@packageContainerN	<p>reference usable to indicate the outer package containing this package  - base type: string, max length: 40,  (XPath YARNDesAdvise/shipInfo/actualPackageUnit/packagesList/packageIdentification/packageN/@packageContainerN) [Optional]  (XPath YARNDesAdvise/shipInfo/actualPackageUnit/packageIdentification/packageN/@packageContainerN) [Optional]  (XPath YARNDesAdvise/YAbody/YAitem/shipInfo/actualPackageUnit/packagesList/packageIdentification/packageN/@packageContainerN) [Optional]  (XPath YARNDesAdvise/YAbody/YAitem/packageN/@packageContainerN) [Optional]  (XPath YARNDesAdvise/YAbody/YAitem/shipInfo/actualPackageUnit/packageIdentification/packageN/@packageContainerN) [Optional]</p>

	<p>(XPath YARNDesAdvise/YAbody/YAitem/shipInfo/packages/packageN/@packageContainerN) [Optional]</p> <p>(XPath YARNDesAdvise/shipInfo/packages/packageN/@packageContainerN) [Optional]</p>
@packageLevel	<p>level used to indicate the hierarchical structure of the packages (from outer to inner levels)</p> <p>- base type: positiveInteger, min inclusive: 1, max inclusive: 9,</p> <p>(XPath YARNDesAdvise/shipInfo/actualPackageUnit/@packageLevel) [Optional] (a)</p> <p>(XPath YARNDesAdvise/YAbody/YAitem/shipInfo/packages/@packageLevel) [Optional]</p> <p>- nota: <i>number fixing the level of the package in the transport structure (from inner to outer). Must either be used for all package types or not be used</i></p> <p>(XPath YARNDesAdvise/YAbody/YAitem/shipInfo/actualPackageUnit/@packageLevel) [Optional] (a)</p> <p>(XPath YARNDesAdvise/shipInfo/packages/@packageLevel) [Optional]</p> <p>- nota: <i>number fixing the level of the package in the transport structure (from inner to outer). Must either be used for all package types or not be used</i></p>
packageModelCode	<p>a code (eg a barcode) identifying the type of packaging</p> <p>- base type: string,</p> <p>(XPath YARNDesAdvise/YAbody/YAitem/shipInfo/actualPackageUnit/packageModelCode) 0-1 (N)</p> <p>(XPath YARNDesAdvise/shipInfo/packages/packageModelCode) 0-1 (N)</p> <p>(XPath YARNDesAdvise/YAbody/YAitem/shipInfo/packages/packageModelCode) 0-1 (N)</p> <p>(XPath YARNDesAdvise/shipInfo/actualPackageUnit/packageModelCode) 0-1 (N)</p>
packageN	<p>serial number used to identify a transport package</p> <p>- base type: string, max length: 40,</p> <p>(XPath YARNDesAdvise/YAbody/YAitem/packageN) 0-unbounded (U)</p> <p>- note: <i>identifiers of the packages containing the items of this line</i></p> <p>(XPath YARNDesAdvise/YAbody/YAitem/shipInfo/actualPackageUnit/packageIdentification/packageN) 1-1 (U)</p> <p>(XPath YARNDesAdvise/shipInfo/actualPackageUnit/packageIdentification/packageN) 1-1 (U)</p> <p>(XPath YARNDesAdvise/shipInfo/packages/packageN) 0-unbounded (U)</p> <p>- note: <i>here the serial no.s of the packages can be identified</i></p> <p>(XPath YARNDesAdvise/YAbody/YAitem/shipInfo/actualPackageUnit/packagesList/packageIdentification/packageN) 1-1 (U)</p> <p>(XPath YARNDesAdvise/YAbody/YAitem/shipInfo/packages/packageN) 0-unbounded (U)</p> <p>- note: <i>here the serial no.s of the packages can be identified</i></p> <p>(XPath YARNDesAdvise/shipInfo/actualPackageUnit/packagesList/packageIdentification/packageN) 1-1 (U)</p>
packageQty	<p>quantity of the specified transport packages</p> <p>- base type: positiveInteger,</p> <p>(XPath YARNDesAdvise/YAbody/YAitem/shipInfo/packages/packageQty) 0-1</p> <p>- note: <i>total for the type of package</i></p> <p>(XPath YARNDesAdvise/shipInfo/packages/packageQty) 0-1</p> <p>- note: <i>total for the type of package</i></p>
packageText	<p>denomination of the type of transport package (text)</p> <p>- base type: string, max length: 80,</p> <p>(XPath YARNDesAdvise/YAbody/YAitem/shipInfo/packages/packageText) 1-1 (U)</p> <p>(XPath YARNDesAdvise/shipInfo/actualPackageUnit/packageText) 0-1 (U)</p> <p>(XPath YARNDesAdvise/shipInfo/packages/packageText) 1-1 (U)</p> <p>(XPath YARNDesAdvise/YAbody/YAitem/shipInfo/actualPackageUnit/packageText) 0-1 (U)</p>

pcTolerance	percent deviation tolerated on the value of a measurement (it must have a plus or minus sign) - base type: decimal, min inclusive: 0, max inclusive: 100, total digits: 2, (XPath YARNDesAdvise/YAbody/YAitem/yarnSpecs/pcTolerance) 0-2
percCompos	fiber rate in the product composition - base type: decimal, min inclusive: 0, max inclusive: 100, fraction digits: 2, (XPath YARNDesAdvise/YAbody/YAitem/yarnCompos/percCompos) 1-9
person	name of the contact person within a Party - base type: string, max length: 40, (XPath YARNDesAdvise/THeader/supplier/person) 0-1 (XPath YARNDesAdvise/THeader/buyer/person) 0-1 (XPath YARNDesAdvise/THeader/thirdParty/person) 0-1 (XPath YARNDesAdvise/YAbody/YAitem/thirdParty/person) 0-1
@phone	phone number of the contact person within a Party - base type: string, max length: 35, (XPath YARNDesAdvise/YAbody/YAitem/thirdParty/person/@phone) [Optional] (XPath YARNDesAdvise/THeader/thirdParty/person/@phone) [Optional] (XPath YARNDesAdvise/THeader/buyer/person/@phone) [Optional] (XPath YARNDesAdvise/THeader/supplier/person/@phone) [Optional]
pieceInnWrap1	code specifying the type of inner wrapping/packing used for the fabric piece - base type: string, cod. table: T4 <a href="http://www.ebiz.enea.it/moda-ml/repository/codelist/v2018-1/gc_T4.xml">http://www.ebiz.enea.it/moda-ml/repository/codelist/v2018-1/gc_T4.xml</a> (XPath YARNDesAdvise/YAbody/YAitem/shipInfo/packages/handlingChar/piecePack/pieceInnWrap1) 1-1 (XPath YARNDesAdvise/shipInfo/packages/handlingChar/piecePack/pieceInnWrap1) 1-1
pieceInnWrap2	code sub-specifying the type of inner wrapping/packing used for the fabric piece - base type: string, cod. table: T5 <a href="http://www.ebiz.enea.it/moda-ml/repository/codelist/v2018-1/gc_T5.xml">http://www.ebiz.enea.it/moda-ml/repository/codelist/v2018-1/gc_T5.xml</a> (XPath YARNDesAdvise/YAbody/YAitem/shipInfo/packages/handlingChar/piecePack/pieceInnWrap2) 0-1 (XPath YARNDesAdvise/shipInfo/packages/handlingChar/piecePack/pieceInnWrap2) 0-1
pieceOutWrap	code specifying the type of outer wrapping or packing used for the fabric piece - base type: string, cod. table: T6 <a href="http://www.ebiz.enea.it/moda-ml/repository/codelist/v2018-1/gc_T6.xml">http://www.ebiz.enea.it/moda-ml/repository/codelist/v2018-1/gc_T6.xml</a> (XPath YARNDesAdvise/shipInfo/packages/handlingChar/piecePack/pieceOutWrap) 0-1 (XPath YARNDesAdvise/YAbody/YAitem/shipInfo/packages/handlingChar/piecePack/pieceOutWrap) 0-1
piecePackText	free text specifying the type of wrapping or packing used for the fabric piece - base type: string, max length: 250, (XPath YARNDesAdvise/YAbody/YAitem/shipInfo/packages/handlingChar/piecePack/piecePackText) 1-1 (U) (XPath YARNDesAdvise/shipInfo/packages/handlingChar/piecePack/piecePackText) 1-1 (U)
postCode	code defining the postal zone - base type: string, max length: 10, (XPath YARNDesAdvise/THeader/supplier/postCode) 0-1 (XPath YARNDesAdvise/THeader/thirdParty/postCode) 0-1 (XPath YARNDesAdvise/THeader/buyer/postCode) 0-1 (XPath YARNDesAdvise/YAbody/YAitem/thirdParty/postCode) 0-1
@progr	progressive number in the sequence - base type: positiveInteger, min inclusive: 1, (XPath YARNDesAdvise/YAbody/YAitem/shipInfo/packages/fillingCriterion/@progr) [Optional] (N) (XPath YARNDesAdvise/YAbody/YAitem/shipInfo/transInfo/@progr) [Optional] (N)



	<p>- nota: <i>Indicates the position of the leg in a sequence of transport legs. If it is declared it must be in all the transInfo elements.</i>  (XPath YARNDesAdvise/shipInfo/transInfo/@progr) [Optional] (N)</p> <p>- nota: <i>Indicates the position of the leg in a sequence of transport legs. If it is declared it must be in all the transInfo elements.</i>  (XPath YARNDesAdvise/shipInfo/packages/fillingCriterion/@progr) [Optional] (Na)</p>
qty	<p>net quantity of the article or object correlated, qualified by the function of the document (ordering, delivering, ..) and by the context  - base type: decimal, min inclusive: 0, fraction digits: 2,  (XPath YARNDesAdvise/YAbody/YAitem/qty) 1-2</p> <hr/> <p>AAAA-WARNING! - text not AVAILABLE n. 245 - In=en</p>
qualityLevel	<p>the product quality level (first choice, second choice,...).  - base type: string,  (XPath YARNDesAdvise/shipInfo/actualPackageUnit/itemsList/qualityLevel) 0-1 (N)  (XPath YARNDesAdvise/YAbody/YAitem/itemsList/qualityLevel) 0-1 (N)  (XPath YARNDesAdvise/YAbody/YAitem/shipInfo/actualPackageUnit/itemsList/qualityLevel) 0-1 (N)</p>
@reelMat	<p>type of material of which a package for yarn is made  - base type: string, cod. table: T30  <a href="http://www.ebiz.enea.it/moda-ml/repository/codelist/v2018-1/gc_T30.xml">http://www.ebiz.enea.it/moda-ml/repository/codelist/v2018-1/gc_T30.xml</a>  (XPath YARNDesAdvise/YAbody/YAitem/shipInfo/packages/handlingChar/yarnPack/yarnReel/@reelMat) [Optional]  (XPath YARNDesAdvise/shipInfo/packages/handlingChar/yarnPack/yarnReel/@reelMat) [Optional]  (XPath YARNDesAdvise/YAbody/YAitem/yarnPack/yarnReel/@reelMat) [Optional]  (XPath YARNDesAdvise/yarnPack/yarnReel/@reelMat) [Optional]</p>
@reelType	<p>type of package used for a yarn product  - base type: string, cod. table: T29  <a href="http://www.ebiz.enea.it/moda-ml/repository/codelist/v2018-1/gc_T29.xml">http://www.ebiz.enea.it/moda-ml/repository/codelist/v2018-1/gc_T29.xml</a>  (XPath YARNDesAdvise/yarnPack/yarnReel/@reelType) [Required]  (XPath YARNDesAdvise/YAbody/YAitem/yarnPack/yarnReel/@reelType) [Required]  (XPath YARNDesAdvise/shipInfo/packages/handlingChar/yarnPack/yarnReel/@reelType) [Required]  (XPath YARNDesAdvise/YAbody/YAitem/shipInfo/packages/handlingChar/yarnPack/yarnReel/@reelType) [Required]</p>
@role	<p>Third Party role qualifier  - base type: string, cod. table: NT2  <a href="http://www.ebiz.enea.it/moda-ml/repository/codelist/v2018-1/gc_NT2.xml">http://www.ebiz.enea.it/moda-ml/repository/codelist/v2018-1/gc_NT2.xml</a>  (XPath YARNDesAdvise/THeader/thirdParty/@role) [Required]  (XPath YARNDesAdvise/YAbody/YAitem/thirdParty/@role) [Required]</p>
season	<p>sale season; defined as: season (1 crt) + year (4 crt) - season: S/S=1 A/W=2 Spring=3 Summer=4 Autumn=5 Winter=6: for more than four seasons use alphabetic sequence: 1st season=A 2nd season=B etc.etc.  - base type: string, max length: 15,  (XPath YARNDesAdvise/YAbody/YAitem/refDoc/season) 0-1 (A)  - note: <i>here indicates the season to which the referenced document belongs</i>  (XPath YARNDesAdvise/THeader/refDoc/season) 0-1 (A)  - note: <i>here indicates the season to which the referenced document belongs</i></p>
@sender	<p>qualifier that specifies the Party issuing of the document  - base type: boolean,  (XPath YARNDesAdvise/THeader/supplier/@sender) [Optional] (a*)  - nota: <i>This attribute is mandatory when the STYLESHEET must be used</i>  (XPath YARNDesAdvise/THeader/thirdParty/@sender) [Optional] (a*)  - nota: <i>This attribute is mandatory when the STYLESHEET must be used</i>  (XPath YARNDesAdvise/THeader/buyer/@sender) [Optional] (a*)  - nota: <i>This attribute is mandatory when the STYLESHEET must be used</i>  (XPath YARNDesAdvise/YAbody/YAitem/thirdParty/@sender) [Optional] (a*)  - nota: <i>This attribute is mandatory when the STYLESHEET must be used</i></p>

serialN	<p>serial number used for the identification of a physical unit  - base type: string, max length: 250,  (XPath <a href="#">YARNDesAdvise/YAbody/YAitem/shipInfo/actualPackageUnit/packageIdentification/serialN</a>) 0-9 (AU)  - note: <i>multiple values of serialN are allowed in order to provide different representations of the serial identifier of the same package unit. Different instances of serialN must differ at least for one value of idQualifier or numberingOrg</i>  (XPath <a href="#">YARNDesAdvise/YAbody/YAitem/itemsList/itemIdentification/serialN</a>) 1-9 (AU)</p> <hr/> <p><b>AAAA-WARNING! - text not AVAILABLE n. 245 - In=en</b>  - note: <i>multiple values of serialN are allowed for different representations of the serial identifier of the same product unit. Instances of serialN must differ at least for one value of numberingOrg and idQualifier.</i>  (XPath <a href="#">YARNDesAdvise/YAbody/YAitem/shipInfo/actualPackageUnit/packagesList/packageIdentification/serialN</a>) 0-9 (AU)  - note: <i>multiple values of serialN are allowed in order to provide different representations of the serial identifier of the same package unit. Different instances of serialN must differ at least for one value of idQualifier or numberingOrg</i>  (XPath <a href="#">YARNDesAdvise/shipInfo/actualPackageUnit/packageIdentification/serialN</a>) 0-9 (AU)  - note: <i>multiple values of serialN are allowed in order to provide different representations of the serial identifier of the same package unit. Different instances of serialN must differ at least for one value of idQualifier or numberingOrg</i>  (XPath <a href="#">YARNDesAdvise/shipInfo/actualPackageUnit/packagesList/packageIdentification/serialN</a>) 0-9 (AU)  - note: <i>multiple values of serialN are allowed in order to provide different representations of the serial identifier of the same package unit. Different instances of serialN must differ at least for one value of idQualifier or numberingOrg</i>  (XPath <a href="#">YARNDesAdvise/YAbody/YAitem/shipInfo/actualPackageUnit/itemsList/itemIdentification/serialN</a>) 1-9 (AU)</p> <hr/> <p><b>AAAA-WARNING! - text not AVAILABLE n. 245 - In=en</b>  - note: <i>multiple values of serialN are allowed for different representations of the serial identifier of the same product unit. Instances of serialN must differ at least for one value of numberingOrg and idQualifier.</i>  (XPath <a href="#">YARNDesAdvise/shipInfo/actualPackageUnit/itemsList/itemIdentification/serialN</a>) 1-9 (AU)</p> <hr/> <p><b>AAAA-WARNING! - text not AVAILABLE n. 245 - In=en</b>  - note: <i>multiple values of serialN are allowed for different representations of the serial identifier of the same product unit. Instances of serialN must differ at least for one value of numberingOrg and idQualifier.</i></p>
sortableIndicator	<p>It states if the item can be automatically sorted.  - base type: boolean,  (XPath <a href="#">YARNDesAdvise/YAbody/YAitem/shipInfo/packages/handlingChar/sortableIndicator</a>) 0-1 (N)  (XPath <a href="#">YARNDesAdvise/shipInfo/packages/handlingChar/sortableIndicator</a>) 0-1 (N)</p>
@source	<p>party who has provided the data  - base type: string, cod. table: NT12  <a href="http://www.ebiz.enea.it/moda-ml/repository/codelist/v2018-1/gc_NT12.xml">http://www.ebiz.enea.it/moda-ml/repository/codelist/v2018-1/gc_NT12.xml</a>  (XPath <a href="#">YARNDesAdvise/YAbody/YAitem/yarnSpecs/specValue/@source</a>) [Optional]</p>
specValue	<p>value requested for a property or a parameter that is measured  - base type: decimal,  (XPath <a href="#">YARNDesAdvise/YAbody/YAitem/yarnSpecs/specValue</a>) 0-1</p>
stackabilityLevel	<p>This value indicates the level at which the item can be stacked.  - base type: integer,  (XPath <a href="#">YARNDesAdvise/shipInfo/packages/handlingChar/stackabilityLevel</a>) 0-1 (N)  (XPath <a href="#">YARNDesAdvise/YAbody/YAitem/shipInfo/packages/handlingChar/stackabilityLevel</a>) 0-1 (N)</p>
street	<p>street and building number identifying a location  - base type: string, max length: 80,  (XPath <a href="#">YARNDesAdvise/THeader/buyer/street</a>) 0-1</p>

	(XPath YARNDesAdvise/YAbody/YAitem/thirdParty/street) 0-1 (XPath YARNDesAdvise/THeader/thirdParty/street) 0-1 (XPath YARNDesAdvise/THeader/supplier/street) 0-1
subCountry	short name or code of the sub-country entity - base type: string, max length: 9, (XPath YARNDesAdvise/YAbody/YAitem/thirdParty/subCountry) 0-1 (XPath YARNDesAdvise/THeader/buyer/subCountry) 0-1 (XPath YARNDesAdvise/THeader/thirdParty/subCountry) 0-1 (XPath YARNDesAdvise/THeader/supplier/subCountry) 0-1
subDept	name or code of a contact department within a Party - base type: string, max length: 40, (XPath YARNDesAdvise/THeader/thirdParty/subDept) 0-1 (N) (XPath YARNDesAdvise/THeader/supplier/subDept) 0-1 (N) (XPath YARNDesAdvise/YAbody/YAitem/thirdParty/subDept) 0-1 (N) (XPath YARNDesAdvise/THeader/buyer/subDept) 0-1 (N)
@TAtype	type of Despatch advise - base type: string, cod. table: NT10 <a href="http://www.ebiz.enea.it/moda-ml/repository/codelist/v2018-1/gc_NT10.xml">http://www.ebiz.enea.it/moda-ml/repository/codelist/v2018-1/gc_NT10.xml</a> (XPath YARNDesAdvise/@TAtype) [Optional] [Default= STD]
@TID	serial number wired into the RFID chip - base type: string, (XPath YARNDesAdvise/YAbody/YAitem/shipInfo/packages/EPCList/EPC/@TID) [Optional] (XPath YARNDesAdvise/shipInfo/packages/EPCList/EPC/@TID) [Optional]
tolerance	deviation tolerated on the value of a measurement (it must have a plus or minus sign) - base type: decimal, (XPath YARNDesAdvise/YAbody/YAitem/yarnSpecs/tolerance) 0-2
transCondition	special condition of transport or special service requested to the Forwarder - base type: string, cod. table: T38 <a href="http://www.ebiz.enea.it/moda-ml/repository/codelist/v2018-1/gc_T38.xml">http://www.ebiz.enea.it/moda-ml/repository/codelist/v2018-1/gc_T38.xml</a> (XPath YARNDesAdvise/YAbody/YAitem/shipInfo/transInfo/transCondition) 0-3 (XPath YARNDesAdvise/shipInfo/transInfo/transCondition) 0-3
transConditionText	free text description of the special condition of transport or special service requested to the Forwarder - base type: string, max length: 250, (XPath YARNDesAdvise/shipInfo/transInfo/transConditionText) 0-1 (U) (XPath YARNDesAdvise/YAbody/YAitem/shipInfo/transInfo/transConditionText) 0-1 (U)
transMeans	means of transport, in general or referred to a specific leg - base type: string, cod. table: T40 <a href="http://www.ebiz.enea.it/moda-ml/repository/codelist/v2018-1/gc_T40.xml">http://www.ebiz.enea.it/moda-ml/repository/codelist/v2018-1/gc_T40.xml</a> (XPath YARNDesAdvise/shipInfo/transInfo/transMeans) 0-1 (XPath YARNDesAdvise/YAbody/YAitem/shipInfo/transInfo/transMeans) 0-1
transMode	way of transport, in general or referred to the specified leg - base type: string, cod. table: T8 <a href="http://www.ebiz.enea.it/moda-ml/repository/codelist/v2018-1/gc_T8.xml">http://www.ebiz.enea.it/moda-ml/repository/codelist/v2018-1/gc_T8.xml</a> (XPath YARNDesAdvise/shipInfo/transInfo/transMode) 1-1 (XPath YARNDesAdvise/YAbody/YAitem/shipInfo/transInfo/transMode) 1-1
@transReason	reason for the transport - base type: string, cod. table: NT11 <a href="http://www.ebiz.enea.it/moda-ml/repository/codelist/v2018-1/gc_NT11.xml">http://www.ebiz.enea.it/moda-ml/repository/codelist/v2018-1/gc_NT11.xml</a> (XPath YARNDesAdvise/YAbody/YAitem/shipInfo/transInfo/@transReason) [Optional] (XPath YARNDesAdvise/shipInfo/transInfo/@transReason) [Optional]
@uid	unique element identifier within the xml document - base type: string,

	(XPath YARNDesAdvise/TAheader/refDoc/attachment/@uid) [Optional] (XPath YARNDesAdvise/YAbody/YAitem/refDoc/attachment/@uid) [Optional]
@um	<p>specification of the unit of measure - base type: string, cod. table: NT7 <a href="http://www.ebiz.enea.it/moda-ml/repository/codelist/v2018-1/gc_NT7.xml">http://www.ebiz.enea.it/moda-ml/repository/codelist/v2018-1/gc_NT7.xml</a></p> <p>(XPath YARNDesAdvise/shipInfo/actualPackageUnit/netWeight/@um) [Required] (XPath YARNDesAdvise/yarnPack/yarnReel/yarnReelH/@um) [Required] (XPath YARNDesAdvise/YAbody/YAitem/shipInfo/packages/packageDim/length/@um) [Required] (XPath YARNDesAdvise/yarnPack/yarnReel/yarnReelD/@um) [Required] (XPath YARNDesAdvise/YAbody/YAitem/shipInfo/packages/packageDim/width/@um) [Required] (XPath YARNDesAdvise/shipInfo/actualPackageUnit/grossWeight/@um) [Required] (XPath YARNDesAdvise/shipInfo/packages/handlingChar/yarnPack/yarnReel/yarnReelH/@um) [Required] (XPath YARNDesAdvise/YAbody/YAitem/shipInfo/actualPackageUnit/packageDim/width/@um) [Required] (XPath YARNDesAdvise/YAbody/YAitem/shipInfo/actualPackageUnit/packageDim/length/@um) [Required] (XPath YARNDesAdvise/shipInfo/actualPackageUnit/volume/@um) [Required] (XPath YARNDesAdvise/shipInfo/packages/handlingChar/netWeight/@um) [Required] (XPath YARNDesAdvise/yarnPack/yarnReel/yarnReelQty/@um) [Required] (XPath YARNDesAdvise/YAbody/YAitem/shipInfo/transInfo/grossWeight/@um) [Required] (XPath YARNDesAdvise/YAbody/YAitem/shipInfo/actualPackageUnit/packageDim/height/@um) [Required] (XPath YARNDesAdvise/YAbody/YAitem/shipInfo/packages/handlingChar/yarnPack/yarnReel/yarnReelQty/@um) [Required] (XPath YARNDesAdvise/shipInfo/actualPackageUnit/packageDim/width/@um) [Required] (XPath YARNDesAdvise/shipInfo/actualPackageUnit/packageDim/height/@um) [Required] (XPath YARNDesAdvise/shipInfo/packages/packageDim/width/@um) [Required] (XPath YARNDesAdvise/shipInfo/actualPackageUnit/packageDim/length/@um) [Required] (XPath YARNDesAdvise/YAbody/YAitem/yarnPack/yarnReel/yarnReelD/@um) [Required] (XPath YARNDesAdvise/YAbody/YAitem/shipInfo/packages/packageDim/height/@um) [Required] (XPath YARNDesAdvise/YAbody/YAitem/yarnPack/yarnReel/yarnReelH/@um) [Required] (XPath YARNDesAdvise/YAbody/YAitem/yarnPack/yarnReel/yarnReelQty/@um) [Required] (XPath YARNDesAdvise/shipInfo/packages/handlingChar/volume/@um) [Required] (XPath YARNDesAdvise/shipInfo/packages/packageDim/height/@um) [Required] (XPath YARNDesAdvise/YAbody/YAitem/shipInfo/packages/handlingChar/yarnPack/yarnReel/yarnReelH/@um) [Required] (XPath YARNDesAdvise/shipInfo/packages/packageDim/length/@um) [Required] (XPath YARNDesAdvise/shipInfo/packages/handlingChar/yarnPack/yarnReel/yarnReelQty/@um) [Required] (XPath YARNDesAdvise/YAbody/YAitem/shipInfo/packages/handlingChar/yarnPack/yarnReel/yarnReelD/@um) [Required] (XPath YARNDesAdvise/shipInfo/packages/minItemsPerPackage/@um) [Required]</p> <p>(a) (XPath YARNDesAdvise/shipInfo/transInfo/grossWeight/@um) [Required] (XPath YARNDesAdvise/YAbody/YAitem/yarnSpecs/pcTolerance/@um) [Optional] - nota: to be used when it has to be soecified if the declared percentage is b y weight, volume, etc... (XPath YARNDesAdvise/shipInfo/transInfo/netWeight/@um) [Required] (XPath YARNDesAdvise/YAbody/YAitem/shipInfo/packages/handlingChar/grossWeight/@um) [Required]</p>

	<p>(XPath YARNDesAdvise/shipInfo/packages/handlingChar/grossWeight/@um) [Required]</p> <p>(XPath YARNDesAdvise/shipInfo/packages/handlingChar/yarnPack/yarnReel/yarnReelD/@um) [Required]</p> <p>(XPath YARNDesAdvise/YAbody/YAitem/shipInfo/packages/handlingChar/volume/@um) [Required]</p> <p>(XPath YARNDesAdvise/YAbody/YAitem/shipInfo/packages/handlingChar/netWeight/@um) [Required]</p> <p>(XPath YARNDesAdvise/shipInfo/packages/itemsPerPackage/@um) [Required] (a)</p> <p>(XPath YARNDesAdvise/YAbody/YAitem/yarnSpecs/tolerance/@um) [Required]</p> <p>(XPath YARNDesAdvise/YAbody/YAitem/shipInfo/actualPackageUnit/netWeight/@um) [Required]</p> <p>(XPath YARNDesAdvise/YAbody/YAitem/shipInfo/packages/itemsPerPackage/@um) [Required]</p> <p>(XPath YARNDesAdvise/YAbody/YAitem/shipInfo/actualPackageUnit/grossWeight/@um) [Required]</p> <p>(XPath YARNDesAdvise/YAbody/YAitem/shipInfo/transInfo/netWeight/@um) [Required]</p> <p>(XPath YARNDesAdvise/YAbody/YAitem/shipInfo/actualPackageUnit/volume/@um) [Required]</p> <p>(XPath YARNDesAdvise/YAbody/YAitem/shipInfo/packages/minItemsPerPackage/@um) [Required]</p> <p>(XPath YARNDesAdvise/YAbody/YAitem/yarnSpecs/specValue/@um) [Optional]</p> <p>(XPath YARNDesAdvise/YAbody/YAitem/yarnSpecs/experimValue/@um) [Optional]</p> <p>(XPath YARNDesAdvise/YAbody/YAitem/qty/@um) [Required]</p>
uri	<p>Uniform Resource Identifier (URI) that identifies the external object as an Internet resource</p> <p>- base type: normalizedString,</p> <p>(XPath YARNDesAdvise/YAbody/YAitem/refDoc/attachment/externalReference/uri) 1-1 (N)</p> <p>(XPath YARNDesAdvise/THeader/refDoc/attachment/externalReference/uri) 1-1 (N)</p>
@useProfile	<p>use profile to which the present document is compliant if it was agreed by the parties. It is suggested a URI with reference to the firms or the URL of the profile.</p> <p>- base type: string,</p> <p>(XPath YARNDesAdvise/@useProfile) [Optional]</p>
@VAT	<p>VAT rate or code (DEPRECATED, use dtScheme element)</p> <p>- base type: string, cod. table: NT16</p> <p><a href="http://www.ebiz.enea.it/moda-ml/repository/codelist/v2018-1/gc_NT16.xml">http://www.ebiz.enea.it/moda-ml/repository/codelist/v2018-1/gc_NT16.xml</a></p> <p>(XPath YARNDesAdvise/YAbody/YAitem/lineN/@VAT) [Optional]</p> <p>- nota: <i>Deprecated, prefer dtScheme when available.</i></p> <p>(XPath YARNDesAdvise/YAbody/YAitem/thirdParty/@VAT) [Optional]</p> <p>(XPath YARNDesAdvise/THeader/thirdParty/@VAT) [Optional]</p>
@version	<p>Dictionary version from which the instance has been created</p> <p>- base type: string, cod. table: NT100</p> <p><a href="http://www.ebiz.enea.it/moda-ml/repository/codelist/v2018-1/gc_NT100.xml">http://www.ebiz.enea.it/moda-ml/repository/codelist/v2018-1/gc_NT100.xml</a></p> <p>(XPath YARNDesAdvise/@version) [Optional] [Default= 2018-1]</p>
volume	<p>effective volume of a specified object</p> <p>- base type: decimal, min inclusive: 0, fraction digits: 2,</p> <p>(XPath YARNDesAdvise/YAbody/YAitem/shipInfo/actualPackageUnit/volume) 0-1</p> <p>(XPath YARNDesAdvise/YAbody/YAitem/shipInfo/packages/handlingChar/volume) 0-1</p> <p>(XPath YARNDesAdvise/shipInfo/actualPackageUnit/volume) 0-1</p> <p>(XPath YARNDesAdvise/shipInfo/packages/handlingChar/volume) 0-1 (p)</p>
width	<p>effective width of a specified object</p> <p>- base type: decimal, min inclusive: 0, fraction digits: 2,</p>

	<p>(XPath  YARNDesAdvise/YAbody/YAitem/shipInfo/actualPackageUnit/packageDim/widht) 0-1  (XPath YARNDesAdvise/shipInfo/packages/packageDim/width) 0-1  (XPath YARNDesAdvise/shipInfo/actualPackageUnit/packageDim/width) 0-1  (XPath YARNDesAdvise/YAbody/YAitem/shipInfo/packages/packageDim/width) 0-1</p>
yarnChar	<p>physical or mechanical parameter used to define a property of a yarn  - base type: string, cod. table: T24  <a href="http://www.ebiz.enea.it/moda-ml/repository/codelist/v2018-1/gc_T24.xml">http://www.ebiz.enea.it/moda-ml/repository/codelist/v2018-1/gc_T24.xml</a>  (XPath YARNDesAdvise/YAbody/YAitem/yarnSpecs/yarnChar) 1-1</p>
yarnCharText	<p>free text describing the physical or mechanical parameter used to define a property of a yarn  - base type: string, max length: 250,  (XPath YARNDesAdvise/YAbody/YAitem/yarnSpecs/yarnCharText) 1-1 (U)</p>
yarnConeAngle	<p>tapering angle of the cone on which a yarn is reeled  - base type: positiveInteger,  (XPath YARNDesAdvise/yarnPack/yarnReel/yarnConeAngle) 0-1  (XPath YARNDesAdvise/shipInfo/packages/handlingChar/yarnPack/yarnReel/yarnConeAngle) 0-1  (XPath YARNDesAdvise/YAbody/YAitem/yarnPack/yarnReel/yarnConeAngle) 0-1  (XPath YARNDesAdvise/YAbody/YAitem/shipInfo/packages/handlingChar/yarnPack/yarnReel/yarnConeAngle) 0-1</p>
yarnOutWrap	<p>code specifying the type of outer wrapping or packing of a yarn  - base type: string, cod. table: T33  <a href="http://www.ebiz.enea.it/moda-ml/repository/codelist/v2018-1/gc_T33.xml">http://www.ebiz.enea.it/moda-ml/repository/codelist/v2018-1/gc_T33.xml</a>  (XPath YARNDesAdvise/yarnPack/yarnOutWrap) 0-1  (XPath YARNDesAdvise/shipInfo/packages/handlingChar/yarnPack/yarnOutWrap) 0-1  (XPath YARNDesAdvise/YAbody/YAitem/yarnPack/yarnOutWrap) 0-1  (XPath YARNDesAdvise/YAbody/YAitem/shipInfo/packages/handlingChar/yarnPack/yarnOutWrap) 0-1</p>
yarnOutWrapText	<p>free text specifying the type of outer wrapping or packing of a yarn  - base type: string, max length: 250,  (XPath YARNDesAdvise/YAbody/YAitem/yarnPack/yarnOutWrapText) 0-1 (U)  (XPath YARNDesAdvise/shipInfo/packages/handlingChar/yarnPack/yarnOutWrapText) 0-1 (U)  (XPath YARNDesAdvise/yarnPack/yarnOutWrapText) 0-1 (U)  (XPath YARNDesAdvise/YAbody/YAitem/shipInfo/packages/handlingChar/yarnPack/yarnOutWrapText) 0-1 (U)</p>
yarnReelID	<p>diameter of the bobbin used for a yarn product  - base type: decimal, min inclusive: 0, fraction digits: 2,  (XPath YARNDesAdvise/shipInfo/packages/handlingChar/yarnPack/yarnReel/yarnReelID) 0-1  (XPath YARNDesAdvise/yarnPack/yarnReel/yarnReelID) 0-1  (XPath YARNDesAdvise/YAbody/YAitem/yarnPack/yarnReel/yarnReelID) 0-1  (XPath YARNDesAdvise/YAbody/YAitem/shipInfo/packages/handlingChar/yarnPack/yarnReel/yarnReelID) 0-1</p>
yarnReelH	<p>height of the bobbin used a yarn product  - base type: decimal, min inclusive: 0, fraction digits: 2,  (XPath YARNDesAdvise/shipInfo/packages/handlingChar/yarnPack/yarnReel/yarnReelH) 0-1  (XPath YARNDesAdvise/yarnPack/yarnReel/yarnReelH) 0-1  (XPath YARNDesAdvise/YAbody/YAitem/shipInfo/packages/handlingChar/yarnPack/yarnReel/yarnReelH) 0-1  (XPath YARNDesAdvise/YAbody/YAitem/yarnPack/yarnReel/yarnReelH) 0-1</p>
yarnReelQty	<p>quantity of yarn (by weight or length) wound upon a bobbin  - base type: decimal, min inclusive: 0, fraction digits: 2,  (XPath YARNDesAdvise/yarnPack/yarnReel/yarnReelQty) 0-2</p>

	<p>(XPath YARNDesAdvise/shipInfo/packages/handlingChar/yarnPack/yarnReel/yarnReelQty) 0-2</p> <p>(XPath YARNDesAdvise/YAbody/YAitem/yarnPack/yarnReel/yarnReelQty) 0-2</p> <p>(XPath YARNDesAdvise/YAbody/YAitem/shipInfo/packages/handlingChar/yarnPack/yarnReel/yarnReelQty) 0-2</p>
yarnReelWrap	<p>type of wrapping in which a package of yarn is wrapped</p> <p>- base type: string, cod. table: T32</p> <p><a href="http://www.ebiz.enea.it/moda-ml/repository/codelist/v2018-1/gc_T32.xml">http://www.ebiz.enea.it/moda-ml/repository/codelist/v2018-1/gc_T32.xml</a></p> <p>(XPath YARNDesAdvise/YAbody/YAitem/yarnPack/yarnInWrap/yarnReelWrap) 1-1</p> <p>(XPath YARNDesAdvise/yarnPack/yarnInWrap/yarnReelWrap) 1-1</p> <p>(XPath YARNDesAdvise/shipInfo/packages/handlingChar/yarnPack/yarnInWrap/yarnReelWrap) 1-1</p> <p>(XPath YARNDesAdvise/YAbody/YAitem/shipInfo/packages/handlingChar/yarnPack/yarnInWrap/yarnReelWrap) 1-1</p>

## 2.3 Suggested best practices

### **YARNDesAdvise/TAheader/refDoc/docID (identification number of the referenced document SINCE 2008-1 ITS USE IN THE HEADER IS DISCOURAGED (REPLACED BY msgID))**

numberingOrg indicates the role that produced the document identifier (it is allowed to declare two different ones -e.g. customer and supplier - with two docID with different numberingOrg

### **YARNDesAdvise/YAbody/YAitem/refDoc/docID (identification number of the referenced document SINCE 2008-1 ITS USE IN THE HEADER IS DISCOURAGED (REPLACED BY msgID))**

numberingOrg indicates the role that produced the document identifier (it is allowed to declare two different ones -e.g. customer and supplier - with two docID with different numberingOrg

### **YARNDesAdvise/YAbody/YAitem/refDoc/attachment/ externalReference/mimeCode (mime type of the external object)**

Use coding from IANA <http://www.iana.org/assignments/media-types/media-types.xml>

### **YARNDesAdvise/TAheader/refDoc/attachment/ externalReference/mimeCode (mime type of the external object)**

Use coding from IANA <http://www.iana.org/assignments/media-types/media-types.xml>

### **YARNDesAdvise/YAbody/YAitem/qty (net quantity of the article or object correlated, qualified by the function of the document (ordering, delivering, ..) and by the context)**

this element can have two instances only if the units of measure are different

### **YARNDesAdvise/YAbody/YAitem/itemsList/itemIdentification/serialN (serial number used for the identification of a physical unit)**

in the case of garment with RFID for anti-counterfeiting, RFID EPCGlobal for logistics and NFC for the customer experience there should be three serial elements with pairs of attributes numberingOrg/idQualifier: "CL"/"RFID", "GS1"/"RFID", "CL"/"NFC".

### **YARNDesAdvise/YAbody/YAitem/shipInfo/actualPackageUnit/itemsList/itemIdentification/serialN (serial number used for the identification of a physical unit)**

in the case of garment with RFID for anti-counterfeiting, RFID EPCGlobal for logistics and NFC for the customer experience there should be three serial elements with pairs of attributes numberingOrg/idQualifier: "CL"/"RFID", "GS1"/"RFID", "CL"/"NFC".

### **YARNDesAdvise/shipInfo/actualPackageUnit/ itemsList/itemIdentification/serialN (serial number used for the identification of a physical unit)**

in the case of garment with RFID for anti-counterfeiting, RFID EPCGlobal for logistics and NFC for the customer experience there should be three serial elements with pairs of attributes numberingOrg/idQualifier: "CL"/"RFID", "GS1"/"RFID", "CL"/"NFC".



## 2.4 Enumeration tables

List of enumeration tables used in the XML document. You can find the corresponding codes at:  
<http://www.ebiz-tcf.eu/moda-ml/imple/moda-ml-2018-1.asp?lingua=en&pag=6>

### Legenda

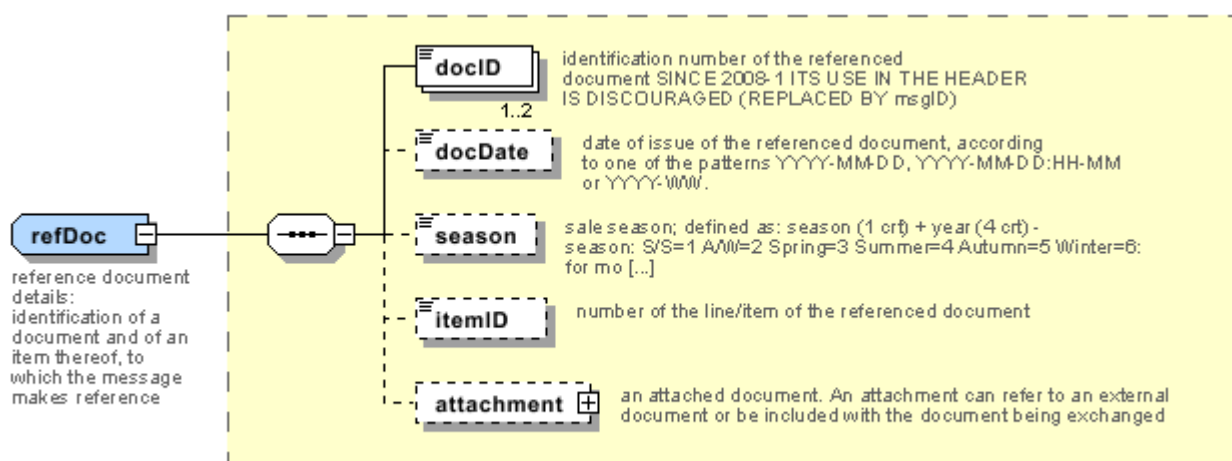
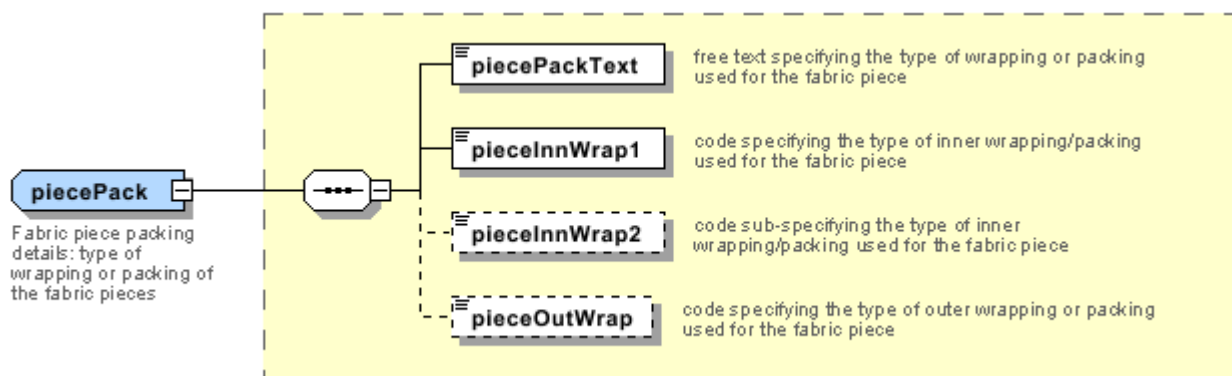
- N: new table
- U: updated properties

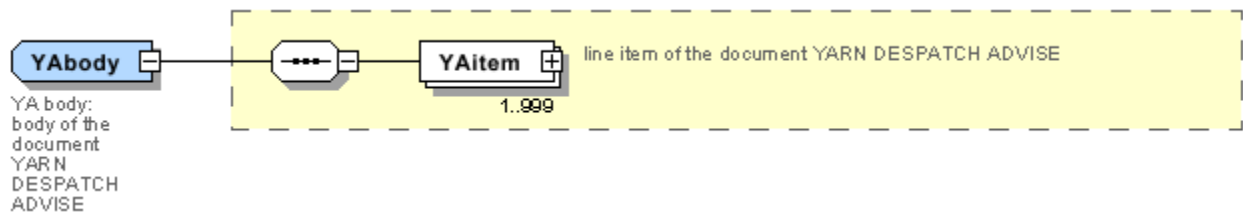
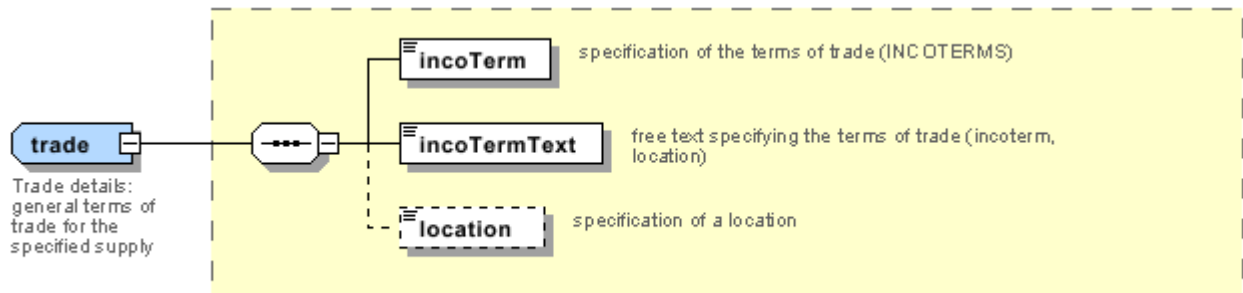
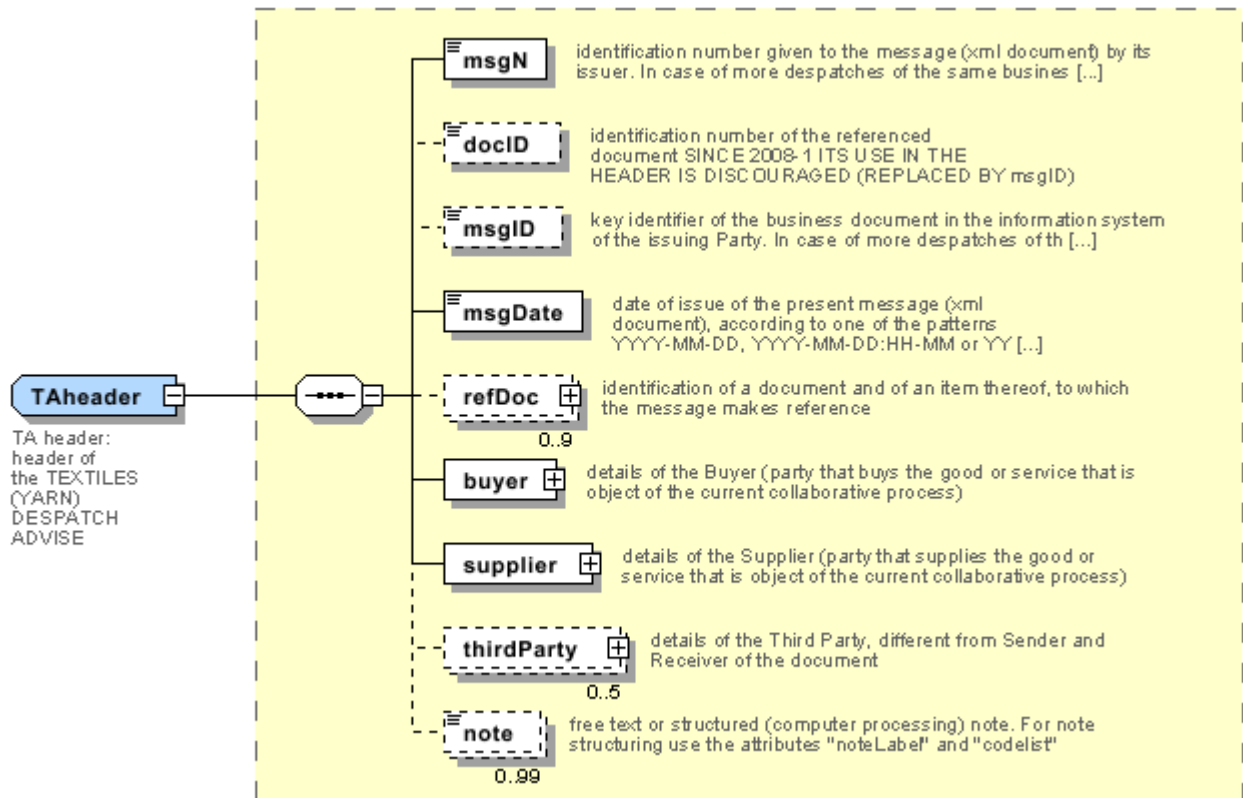
NT10 - Despatch Advise type  
NT100 - eBIZ TCFUpstream version  
NT11 - transport causal  
NT12 - data source  
NT16 - VAT rate or code  
NT18 - message function  
NT2 - third party qualifier  
NT29 - format of a date  
NT3 - data format  
NT51 - Filling Criterion for Package homogeneity (N)  
NT6 - coding system owner/issuer  
NT60 - language, codes from ISO 639-1 (subset) (N)  
NT7 - unit of measure (U)  
T10 - ISO3166 - Country  
T11 - transport package type (U)  
T19 - fibre type  
T21 - type of document  
T24 - yarn characteristics type  
T29 - type of yarn package  
T3 - terms of delivery  
T30 - support of yarn package - material  
T32 - yarn reel wrapping type  
T33 - yarn outer packing  
T38 - transport conditions  
T4 - fabric piece inner packing (wrapping) 1  
T40 - type of transport means  
T44 - additional code type  
T5 - fabric piece inner packing (wrapping) 2  
T6 - fabric piece outer packing  
T8 - Modes of Transport

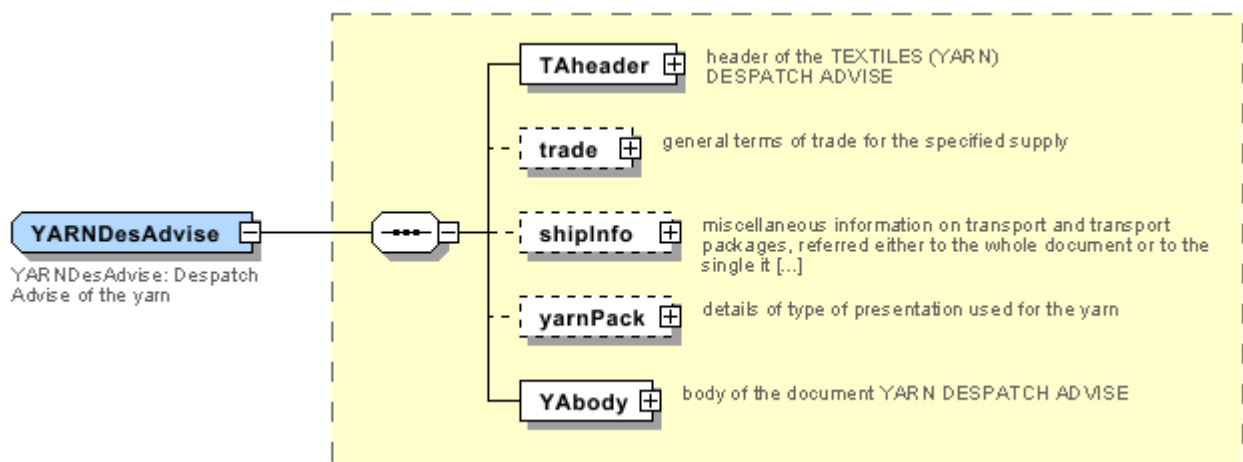
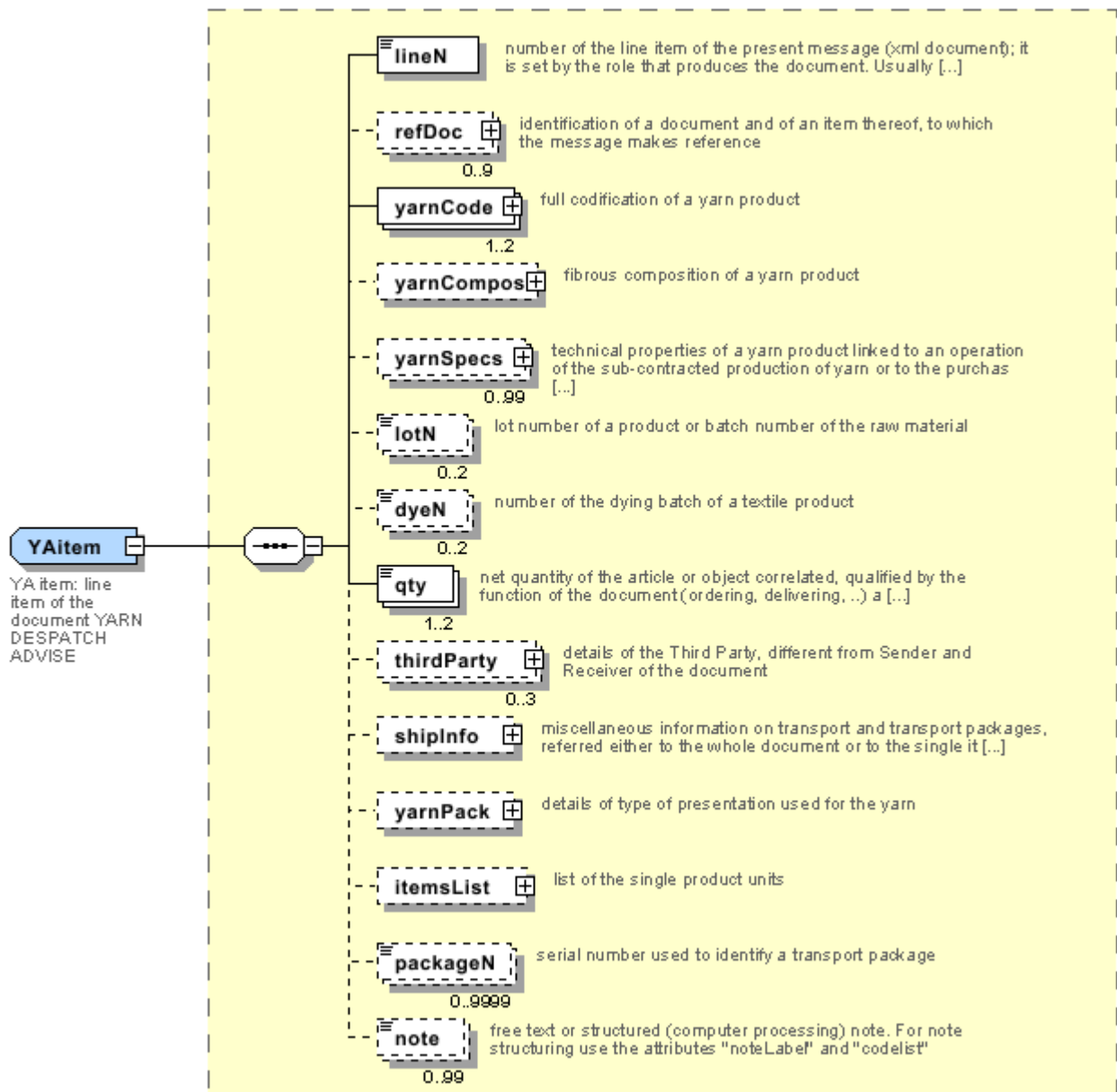


# Annex A

Representative images of the principal complex elements' structure.









## Annex B

### NT10 - Despatch Advise type

type of Despatch advise

Agency name: eBIZ

tabella cod.: NT10

File codes list (Generic code): [http://www.ebiz.enea.it/moda-ml/repository/codelist/v2018-1/gc\\_NT10.xml](http://www.ebiz.enea.it/moda-ml/repository/codelist/v2018-1/gc_NT10.xml)

Code	Description	Adoption note	Version status	Date of insertion
BRG	re-worked no-charge			01/07/2013
CLP	for work			05/12/2013
DDT	return from work			01/07/2013
DDV	for demonstration			01/07/2013
PKL	packing list		(N)	05/02/2018
PRE	pre-advise			
RCD	storage return			01/07/2013
RDV	return from demonstration			05/12/2013
RNL	not worked return			01/07/2013
RRG	return from re-worked no-charge			05/12/2013
RSB	return from sale			05/12/2013
SBT	for sale			01/07/2013
SCD	for storage			05/12/2013
STD	standard			

### NT100 - eBIZ TCFUpstream version

dictionary version

Agency name: eBIZ

tabella cod.: NT100

File codes list (Generic code): [http://www.ebiz.enea.it/moda-ml/repository/codelist/v2018-1/gc\\_NT100.xml](http://www.ebiz.enea.it/moda-ml/repository/codelist/v2018-1/gc_NT100.xml)

Code	Description	Adoption note	Version status	Date of insertion
2013-1	v2013-1			01/07/2013
2018-1	v2018-1		(N)	04/11/2018
draft	draft		(N)	08/09/2017

## NT11 - transport causal

reason for the transport

Agency name: eBIZ

tabella cod.: NT11

File codes list (Generic code): [http://www.ebiz.enea.it/moda-ml/repository/codelist/v2018-1/gc\\_NT11.xml](http://www.ebiz.enea.it/moda-ml/repository/codelist/v2018-1/gc_NT11.xml)

Code	Description	Adoption note	Version status	Date of insertion
FOC	free of charge			
FRW	return from re-works			
FST	return from storage			
FVW	return from view			
FWK	return from works			
IST	in storage			
NWK	return non-worked			
RJC	return from rejection			
SEL	to sell			
STO	to storage			
VEW	to view			
WRK	to works			

## NT12 - data source

party who has provided the data

Agency name: eBIZ

tabella cod.: NT12

File codes list (Generic code): [http://www.ebiz.enea.it/moda-ml/repository/codelist/v2018-1/gc\\_NT12.xml](http://www.ebiz.enea.it/moda-ml/repository/codelist/v2018-1/gc_NT12.xml)

Code	Description	Adoption note	Version status	Date of insertion
AC	internal test			
CO	external test			
CV	test after steaming			

## NT16 - VAT rate or code

VAT rate or code ( DEPRECATED, use dtScheme element )



tabella cod.: NT16

File codes list (Generic code): [http://www.ebiz.enea.it/moda-ml/repository/codelist/v2018-1/gc\\_NT16.xml](http://www.ebiz.enea.it/moda-ml/repository/codelist/v2018-1/gc_NT16.xml)

### NT18 - message function

function performed by the present message with regards to the transmission

Agency name: eBIZ

tabella cod.: NT18

File codes list (Generic code): [http://www.ebiz.enea.it/moda-ml/repository/codelist/v2018-1/gc\\_NT18.xml](http://www.ebiz.enea.it/moda-ml/repository/codelist/v2018-1/gc_NT18.xml)

Code	Description	Adoption note	Version status	Date of insertion
CA	delete this document			01/07/2013
CP	copy			
OR	original			
RC	re-transmission for data correction			
RT	re-transmission			

### NT2 - third party qualifier

Third Party role qualifier

Agency name: eBIZ

tabella cod.: NT2

File codes list (Generic code): [http://www.ebiz.enea.it/moda-ml/repository/codelist/v2018-1/gc\\_NT2.xml](http://www.ebiz.enea.it/moda-ml/repository/codelist/v2018-1/gc_NT2.xml)

Code	Description	Adoption note	Version status	Date of insertion
AG	Sales Agent			
AU	Auditor		(N)	08/04/2019
CE	Certification authority		(N)	08/04/2019
CO	Quality Controller			
DC	Response to			
DF	Invoicee			
DI	Copy to (CC)			28/10/2014
DM	Consignee			
DP	Consignment address (Delivery Party)			
IM	Importer			
OR	Originator			10/09/2014

SC	Sub contractor		(N)	10/04/2019
SM	Service/ePlatform manager		(N)	08/04/2019
SP	Forwarder			
TX	Tax Representative			

### NT29 - format of a date

format used for the date

Agency name: eBIZ

tabella cod.: NT29

File codes list (Generic code): [http://www.ebiz.enea.it/moda-ml/repository/codelist/v2018-1/gc\\_NT29.xml](http://www.ebiz.enea.it/moda-ml/repository/codelist/v2018-1/gc_NT29.xml)

Code	Description	Adoption note	Version status	Date of insertion
D	YYYY-MM-DD			
M	YYYY-MM-DD:HH-MM			
W	YYYY-WW			

### NT3 - data format

format of a string according to a customized User rule (local rule)

Agency name: eBIZ

tabella cod.: NT3

File codes list (Generic code): [http://www.ebiz.enea.it/moda-ml/repository/codelist/v2018-1/gc\\_NT3.xml](http://www.ebiz.enea.it/moda-ml/repository/codelist/v2018-1/gc_NT3.xml)

Code	Description	Adoption note	Version status	Date of insertion
EN4	GS1-GLN			01/07/2013
MD	mutually agreed			

### NT51 - Filling Criterion for Package homogeneity (N)

Filling Criterion for Package homogeneity

Agency name: eBIZ

tabella cod.: NT51

File codes list (Generic code): [http://www.ebiz.enea.it/moda-ml/repository/codelist/v2018-1/gc\\_NT51.xml](http://www.ebiz.enea.it/moda-ml/repository/codelist/v2018-1/gc_NT51.xml)

Code	Description	Adoption note	Version status	Date of insertion
------	-------------	---------------	----------------	-------------------

COL	Colour		(N)	08/09/2017
MOD	Model		(N)	08/09/2017
SIZ	Size		(N)	08/09/2017

### NT6 - coding system owner/issuer

code specifying the organisation who has created or owns the coding or numbering system

Agency name: eBIZ

tabella cod.: NT6

File codes list (Generic code): [http://www.ebiz.enea.it/moda-ml/repository/codelist/v2018-1/gc\\_NT6.xml](http://www.ebiz.enea.it/moda-ml/repository/codelist/v2018-1/gc_NT6.xml)

Code	Description	Adoption note	Version status	Date of insertion
CL	Customer/buyer			
CO	Quality Controller			
EB	eBIZ	replaces 'ML'	(N)	18/03/2019
EN	GS1 ( ex-EAN International )			
ES	e-Stockflow			
FO	Supplier			
GS	GS1			01/07/2013
MF	VAT identifier		(U)	
ML	Moda-ML	DEPRECATED	(U)	
SP	Service Provider			

### NT60 - language, codes from ISO 639-1 (subset) (N)

Agency name: eBIZ / ISO

tabella cod.: NT60

File codes list (Generic code): [http://www.ebiz.enea.it/moda-ml/repository/codelist/v2018-1/gc\\_NT60.xml](http://www.ebiz.enea.it/moda-ml/repository/codelist/v2018-1/gc_NT60.xml)

Code	Description	Adoption note	Version status	Date of insertion
af	Afrikaans		(N)	31/01/2019
ar	Arabic		(N)	31/01/2019
be	Belarusian		(N)	31/01/2019
bg	Bulgarian		(N)	31/01/2019
bn	Bengali		(N)	31/01/2019
bo	Tibetan		(N)	31/01/2019

bs	Bosnian		(N)	31/01/2019
ca	Catalan, Valencian		(N)	31/01/2019
cs	Czech		(N)	31/01/2019
da	Danish		(N)	31/01/2019
de	German		(N)	31/01/2019
el	Greek, Modern (1453-)		(N)	31/01/2019
en	English		(N)	31/01/2019
eo	Esperanto		(N)	31/01/2019
es	Spanish, Castilian		(N)	31/01/2019
et	Estonian		(N)	31/01/2019
eu	Basque		(N)	31/01/2019
F	Female		(N)	15/04/2019
fa	Persian		(N)	31/01/2019
fi	Finnish		(N)	31/01/2019
fr	French		(N)	31/01/2019
ga	Irish		(N)	31/01/2019
gd	Gaelic, Scottish Gaelic		(N)	31/01/2019
gn	Guarani		(N)	31/01/2019
he	Hebrew		(N)	31/01/2019
hr	Croatian		(N)	31/01/2019
ht	Haitian, Haitian Creole		(N)	31/01/2019
hu	Hungarian		(N)	31/01/2019
hy	Armenian		(N)	31/01/2019
ia	Interlingua (International Auxiliary Language Association)		(N)	31/01/2019
id	Indonesian		(N)	31/01/2019
is	Icelandic		(N)	31/01/2019
it	Italian		(N)	31/01/2019
ja	Japanese		(N)	31/01/2019
jv	Javanese		(N)	31/01/2019
ka	Georgian		(N)	31/01/2019
km	Central Khmer		(N)	31/01/2019
ko	Korean		(N)	31/01/2019
ku	Kurdish		(N)	31/01/2019
lb	Luxembourgish, Letzeburgesch		(N)	31/01/2019
lo	Lao		(N)	31/01/2019

lt	Lithuanian		(N)	31/01/2019
lv	Latvian		(N)	31/01/2019
mg	Malagasy		(N)	31/01/2019
mk	Macedonian		(N)	31/01/2019
mn	Mongolian		(N)	31/01/2019
mt	Maltese		(N)	31/01/2019
nl	Dutch, Flemish		(N)	31/01/2019
no	Norwegian		(N)	31/01/2019
pl	Polish		(N)	31/01/2019
pt	Portuguese		(N)	31/01/2019
ro	Romanian, Moldavian, Moldovan		(N)	31/01/2019
ru	Russian		(N)	31/01/2019
se	Northern Sami		(N)	31/01/2019
sk	Slovak		(N)	31/01/2019
sl	Slovenian		(N)	31/01/2019
sm	Samoan		(N)	31/01/2019
so	Somali		(N)	31/01/2019
sq	Albanian		(N)	31/01/2019
sr	Serbian		(N)	31/01/2019
sv	Swedish		(N)	31/01/2019
sw	Swahili		(N)	31/01/2019
ta	Tamil		(N)	31/01/2019
th	Thai		(N)	31/01/2019
tr	Turkish		(N)	31/01/2019
uk	Ukrainian		(N)	31/01/2019
ur	Urdu		(N)	31/01/2019
uz	Uzbek		(N)	31/01/2019
vi	Vietnamese		(N)	31/01/2019
zh	Chinese		(N)	31/01/2019

#### NT7 - unit of measure (U)

specification of the unit of measure, it is a sub set of table Unit of Measure Code - UN/ECE REC 20 delivered by United Nations Economic Commission for Europe (UN/ECE)

Agency name: eBIZ / UN/ECE

tabella cod.: NT7

File codes list (Generic code): [http://www.ebiz.enea.it/moda-ml/repository/codelist/v2018-1/gc\\_NT7.xml](http://www.ebiz.enea.it/moda-ml/repository/codelist/v2018-1/gc_NT7.xml)

Other link: <http://docs.oasis-open.org/ubl/os-UBL-2.1/cl/gc/default/UnitOfMeasureCode-2.1.gc#>

Code	Description	Adoption note	Version status	Date of insertion
CMK	square centimetre		(N)	20/12/2017
CMQ	cubic centimetre		(N)	20/12/2017
CMT	centimetre			
CNE	centiNewton			
CO2TON	ton of CO2		(N)	10/09/2014
COUPLES	couples			
DMQ	cubic decimetre			
E37	pixel		(N)	11/04/2018
GRM	gram			
HUR	hour			
INH	inch			
KGM	kilogram			
KMT	kilometer			
KWH	kilowatthours		(N)	10/09/2014
LBR	pound			
MIN	minute			
MMK	square millimetre		(N)	20/12/2017
MTK	square metre		(N)	20/12/2017
MTQ	cubic metre			
MTR	metre			
NMB	numero			
ONZ	ounce			
P1	percent			
PPM	parts per million			
PZ	piece		(U)	
RPM	rounds per metre			
YRD	yard			

## T10 - ISO3166 - Country

code of the nation

Agency name: ISO

tabella cod.: T10

File codes list (Generic code): [http://www.ebiz.enea.it/moda-ml/repository/codelist/v2018-1/gc\\_T10.xml](http://www.ebiz.enea.it/moda-ml/repository/codelist/v2018-1/gc_T10.xml)

Table not printed: there are 239 elements, more than the maximum specified for printing: 99.

### T11 - transport package type (U)

code specifying the type of package used for transport and delivery (subset of UN/ECE 8053 and UBL TransportEquipmentTypeCode-2.1)

Agency name: eBIZ

tabella cod.: T11

File codes list (Generic code): [http://www.ebiz.enea.it/moda-ml/repository/codelist/v2018-1/gc\\_T11.xml](http://www.ebiz.enea.it/moda-ml/repository/codelist/v2018-1/gc_T11.xml)

Other link: <http://docs.oasis-open.org/ubl/os-UBL-2.1/cl/gc/default/TransportEquipmentTypeCode-2.1.gc#>

Code	Description	Adoption note	Version status	Date of insertion
4A	box, steel		(U)	
4C	box, wood		(U)	
4G	Box, fibreboard		(N)	01/08/2018
4H	Box, plastic		(N)	01/08/2018
5H	Bag, woven plastic		(N)	01/08/2018
5L	Bag, textile		(N)	01/08/2018
5M	Bag, paper		(U)	
AJ	Cone		(N)	01/08/2018
BL	Bale, compressed		(N)	01/08/2018
BN	Bale, non-compressed		(N)	01/08/2018
BX	Box		(U)	
CI	Canister		(N)	01/08/2018
CL	Coil		(N)	01/08/2018
CN	Container, not otherwise specified as transport equipment		(N)	01/08/2018
CS	Case		(N)	01/08/2018
CT	Carton		(N)	01/08/2018
EC	Bag, plastic		(N)	01/08/2018
ED	Case, with pallet base		(N)	01/08/2018
EE	Case, with pallet base, wooden		(N)	01/08/2018
EF	Case, with pallet base, cardboard		(N)	01/08/2018
EG	Case, with pallet base, plastic		(N)	01/08/2018

EH	Case, with pallet base, metal		(N)	01/08/2018
FX	Bag, flexible container		(N)	01/08/2018
HN	Hanger		(N)	01/08/2018
NE	unpacked		(U)	
NF	Unpacked or unpackaged, single unit		(N)	01/08/2018
NG	Unpacked or unpackaged, multiple units		(N)	01/08/2018
OA	Pallet, CHEP 40 cm x 60 cm		(N)	01/08/2018
OB	Pallet, CHEP 80 cm x 120 cm		(N)	01/08/2018
OC	Pallet, CHEP 100 cm x 120 cm		(N)	01/08/2018
OD	Pallet, AS 4068-1993		(N)	01/08/2018
OE	Pallet, ISO T11		(N)	01/08/2018
PE	europallet (80x120)			
PX	pallet		(U)	
QS	box, plastic, solid		(U)	
RJ	Rack, clothing hanger		(N)	01/08/2018
RL	Reel		(N)	01/08/2018
SO	Spool		(N)	01/08/2018
TU	tube		(U)	
XD	bag, plastics film		(U)	
XK	bag,paper, multi-wall, water resistant		(U)	
ZZ	Mutually defined		(N)	01/08/2018

### T19 - fibre type

type of fibre used in a textile product

Agency name: eBIZ

tabella cod.: T19

File codes list (Generic code): [http://www.ebiz.enea.it/moda-ml/repository/codelist/v2018-1/gc\\_T19.xml](http://www.ebiz.enea.it/moda-ml/repository/codelist/v2018-1/gc_T19.xml)

Code	Description	Adoption note	Version status	Date of insertion
AB	abaca			20/08/2018
AC	acetate			
AF	other fibres			
AG	alginic fibre			
AL	alfa			20/08/2018
CA	hemp			



CC	coir (coconut)			20/08/2018
CL	chlorofibre			
CO	cotton			
CU	cuprous			
EA	elastan			
EL	Elastodiene			20/08/2018
FL	fluorofibre			
GI	broom			20/08/2018
GL	textile glass			
HA	hair			20/08/2018
HE	henequen			20/08/2018
HL	mixed linen			
HL	cotton linen union			20/08/2018
JU	jute			
KE	kenaf			20/08/2018
KP	kapoc			20/08/2018
LI	linen			
LY	lyocell			20/08/2018
MA	modacrylic			
MD	modal			
ME	metallized			
MG	maguey			20/08/2018
PA	polyamide			
PB	polyureic			
PC	acrylic			
PE	polyethylene			
PI	paper			20/08/2018
PL	polyester			
PM	polyimide			
PP	polypropylene			
PR	proteic			
PU	polyurethane			
RA	mamie			20/08/2018
SE	silk			
SI	sisal			20/08/2018

SN	sun			20/08/2018
TA	triacetate			
TR	textile residues or unspecified composition			20/08/2018
TV	trivinyll			
VI	viscose			
VY	vinylal			
WA	angora			
WB	beaver			20/08/2018
WC	cashgora			
WG	vicuna			
WK	camel			
WL	llama			
WM	mohair			
WN	lapin			20/08/2018
WO	wool			
WP	alpaca			
WS	cashmere			
WT	Oteer			20/08/2018
WU	guanaco			
WV	virgin wool			
WY	yack			

## T21 - type of document

type or class to which the referenced document belongs

Agency name: eBIZ

tabella cod.: T21

File codes list (Generic code): [http://www.ebiz.enea.it/moda-ml/repository/codelist/v2018-1/gc\\_T21.xml](http://www.ebiz.enea.it/moda-ml/repository/codelist/v2018-1/gc_T21.xml)

Code	Description	Adoption note	Version status	Date of insertion
BOR	blanket order		(N)	01/02/2018
CAT	Price catalogue - tech sheet			
CEO	Certificate of origin		(N)	13/04/2018
CER	Certificate		(N)	13/04/2018
COC	colour card			
CRN	Credit note			08/09/2017

CTO	Checking order			01/07/2013
CTR	Contract		(U)	
CXF	CxF3 file			01/07/2013
DAD	Darn order			
DDT	ddt			
DEA	Despatch advise			
DER	Despatch request			
DR	Document Request			02/12/2014
FOR	Forecast			02/12/2014
GSO	Garment stock offer			
GSX	Garment stock offer change			
INV	Invoice			
KCC	Knitting-Clothing Commission Order			02/12/2014
KCI	Garment in Work Inventory Report			02/12/2014
M2M	Made to Measure Production Order			02/12/2014
MAS	Master marker			
MCI	Visual merchandising instruction		(N)	13/04/2018
OCH	Order change			
OFF	Offer			
ORD	Purchase order			
ORP	Order response			
OSR	order status request			
OSS	Offer status			02/12/2014
OST	Order status			
OUR	our reference			
QR	Quality Report			02/12/2014
RAI	Raw Material in Work Inventory Report			02/12/2014
RDC	Raw dyeing commission order			
RDH	Raw dyeing order change			
RDR	Raw dyeing order response			
REA	Receiving advise			
REQ	Request for Offer			
RET	Return			02/12/2014
RSC	Spinning commission order			
RSH	Spinning order change			

RSR	Spinning order response			
SCL	process sheet			
TFC	Textile dyeing-finishing commission order			
TFX	Textile Dyeing-Finishing Order Change			02/12/2014
TPC	Textile printing commission order			
TPX	Textile Printing Order Change			02/12/2014
TWI	Textile in work inventory			
VMI	visual merchandising instructions		(N)	01/02/2018
WAC	Warping commission order			
WEC	Weaving commission order			
YDC	Yarn dyeing commission order			
YDH	Yarn dyeing order change			
YDR	Yarn dyeing order response			
YTC	Twisting commission order			
YWI	Yarn in work inventory			

#### T24 - yarn characteristics type

physical or mechanical parameter used to define a property of a yarn

Agency name: eBIZ

tabella cod.: T24

File codes list (Generic code): [http://www.ebiz.enea.it/moda-ml/repository/codelist/v2018-1/gc\\_T24.xml](http://www.ebiz.enea.it/moda-ml/repository/codelist/v2018-1/gc_T24.xml)

Code	Description	Adoption note	Version status	Date of insertion
ALL	elongation			
AMIN	minimum yarn elongation			
CV	CV			
DE	delta E			
NFIN	number of cases diameter less than X%			
NGRO	number of cases diameter greater than X%			
NOD	standard nub			
NOS	Splicer nub			
PLH	H hairiness			
PLL	pilling			
RES	tensile strength			
RMIN	minimum tensile strength			

RTR	shrinkage			
SLA	fastness to light (ISO 105-B02)			
SLB	fastness to water washing (ISO 105-C06)			
SLC	fastness to dry washing (ISO 105-D01)			
SLD	fastness to water drop (ISO 105-E07)			
SLW	fastness to water (ISO 105-E01)			
SLX	fastness to Xeno light (ISO 105-E01)			
STW	S-twist			
TIN	english count			
TMT	metric count			
TTX	tex count			
ZTW	Z-twist			

### T29 - type of yarn package

type of package (roll-up) used for a yarn product

Agency name: eBIZ

tabella cod.: T29

File codes list (Generic code): [http://www.ebiz.enea.it/moda-ml/repository/codelist/v2018-1/gc\\_T29.xml](http://www.ebiz.enea.it/moda-ml/repository/codelist/v2018-1/gc_T29.xml)

Code	Description	Adoption note	Version status	Date of insertion
CIL	bobbin			
CON	cone			
HNK	hank, skein			01/07/2013
MUF	muff, cake			01/07/2013
SPL	spool			
TUB	tube			
XCO	supercone			

### T3 - terms of delivery

specification of the terms of trade (INCOTERMS)

Agency name: Incoterms

tabella cod.: T3

File codes list (Generic code): [http://www.ebiz.enea.it/moda-ml/repository/codelist/v2018-1/gc\\_T3.xml](http://www.ebiz.enea.it/moda-ml/repository/codelist/v2018-1/gc_T3.xml)

<b>Code</b>	<b>Description</b>	<b>Adoption note</b>	<b>Version status</b>	<b>Date of insertion</b>
CFR	COST AND FREIGHT (named port of destination)			
CIF	COST, INSURANCE AND FREIGHT (named port of destination)			
CIP	CARRIAGE AND INSURANCE PAID (named place of destination)			
CP T	CARRIAGE PAID (named place of destination)			
DAF	DELIVERED AT FRONTIER (named place)	according to Incoterms® 2010 it is obsolete		08/12/2017
DAP	Delivered at Place of destination (named place of destination)	according to Incoterms® 2010		08/12/2017
DAT	Delivered at Terminal (named place of destination)	according to Incoterms® 2010		08/12/2017
DDP	DELIVERED DUTY PAID (named place of destination)			
DDU	DELIVERED DUTY UNPAID (named place of destination)	according to Incoterms® 2010 it is obsolete, use DAP		08/12/2017
DEQ	DELIVERED EX-QUAY (named port of destination)	according to Incoterms® 2010 it is obsolete		08/12/2017
DES	DELIVERED EX-SHIP (named port of destination)	according to Incoterms® 2010 it is obsolete		08/12/2017
EXW	EX WORKS (named place)			
FAS	FREE ALONGSIDE SHIP (named port of shipment)			
FC A	FREE CARRIER (named place)			
FOB	FREE ON BOARD (named port of shipment)			

### T30 - support of yarn package - material

type of material of which a package for yarn is made

Agency name: eBIZ

tabella cod.: T30

File codes list (Generic code): [http://www.ebiz.enea.it/moda-ml/repository/codelist/v2018-1/gc\\_T30.xml](http://www.ebiz.enea.it/moda-ml/repository/codelist/v2018-1/gc_T30.xml)

<b>Code</b>	<b>Description</b>	<b>Adoption note</b>	<b>Version status</b>	<b>Date of insertion</b>
-------------	--------------------	----------------------	-----------------------	--------------------------

CA	cartoon			
DY	for soft package dyeing			
MT	metallic			01/07/2013
PL	plastic			

### T32 - yarn reel wrapping type

type of wrapping in which a package of yarn is wrapped

Agency name: eBIZ

tabella cod.: T32

File codes list (Generic code): [http://www.ebiz.enea.it/moda-ml/repository/codelist/v2018-1/gc\\_T32.xml](http://www.ebiz.enea.it/moda-ml/repository/codelist/v2018-1/gc_T32.xml)

Code	Description	Adoption note	Version status	Date of insertion
XA	without bag			
XB	paper bag			01/07/2013
XD	plastic film bag			

### T33 - yarn outer packing

code specifying the type of outer wrapping or packing of a yarn

Agency name: eBIZ

tabella cod.: T33

File codes list (Generic code): [http://www.ebiz.enea.it/moda-ml/repository/codelist/v2018-1/gc\\_T33.xml](http://www.ebiz.enea.it/moda-ml/repository/codelist/v2018-1/gc_T33.xml)

Code	Description	Adoption note	Version status	Date of insertion
00				
CB	cartoon box			
CC	cartoon box 18 reels			
CD	cartoon box 36 reels			
XD	plastic film			

### T38 - transport conditions

special condition of transport or special service requested to the Forwarder

tabella cod.: T38

File codes list (Generic code): [http://www.ebiz.enea.it/moda-ml/repository/codelist/v2018-1/gc\\_T38.xml](http://www.ebiz.enea.it/moda-ml/repository/codelist/v2018-1/gc_T38.xml)

Code	Description	Adoption note	Version status	Date of insertion
ACC	arrange customs clearance			
CAL	Carrier loads			
CAU	Carrier unloads			
CMR	CMR carnet			
FFN	freight forwarders national conditions			
FLD	special agreement for full loading			
NCC	do not arrange customs clearance			
PPB	packaging paid by Buyer			
PPS	packaging paid by Supplier			
PRO	proof of delivery			
RFR	return container free			
RPC	return container paid by Customer			
RPS	return container paid by Supplier			
SHL	Shipper loads			
SHU	Consignee unloads			

#### T4 - fabric piece inner packing (wrapping) 1

code specifying the type of inner wrapping/packing used for the fabric piece

Agency name: eBIZ

tabella cod.: T4

File codes list (Generic code): [http://www.ebiz.enea.it/moda-ml/repository/codelist/v2018-1/gc\\_T4.xml](http://www.ebiz.enea.it/moda-ml/repository/codelist/v2018-1/gc_T4.xml)

Code	Description	Adoption note	Version status	Date of insertion
A	Folded, whole width			
B	Folded, doubled			
C	Folded, tube products			
D	Spooled, whole width			
E	Spooled, doubled, pli: left			
F	Spooled, doubled, pli: right			
G	Rolled, whole width, single item			
H	Rolled, whole width, several items			



I	Rolled, doubled			
J	Rolled, tube products			

#### T40 - type of transport means

means of transport, in general or referred to a specific leg

Agency name: eBIZ

tabella cod.: T40

File codes list (Generic code): [http://www.ebiz.enea.it/moda-ml/repository/codelist/v2018-1/gc\\_T40.xml](http://www.ebiz.enea.it/moda-ml/repository/codelist/v2018-1/gc_T40.xml)

Code	Description	Adoption note	Version status	Date of insertion
AIR	aircraft			
SHP	ship			
TRU	truck			
VAN	van			

#### T44 - additional code type

qualifier of the additional coding of a product

Agency name: eBIZ

tabella cod.: T44

File codes list (Generic code): [http://www.ebiz.enea.it/moda-ml/repository/codelist/v2018-1/gc\\_T44.xml](http://www.ebiz.enea.it/moda-ml/repository/codelist/v2018-1/gc_T44.xml)

Code	Description	Adoption note	Version status	Date of insertion
CC	colour card			
CL	sales collection			
CO	company identification code		(N)	08/09/2017
DY	dye number			
LT	lot number			
MDI	Made in			08/09/2017
MS	manufacturing state			
PKG	packaging			09/09/2014
PL	product line			
RGB	RGB value			
SE	selvedge code			

## T5 - fabric piece inner packing (wrapping) 2

code specifying the sub-type of inner wrapping/packing used for the fabric piece

Agency name: eBIZ

tabella cod.: T5

File codes list (Generic code): [http://www.ebiz.enea.it/moda-ml/repository/codelist/v2018-1/gc\\_T5.xml](http://www.ebiz.enea.it/moda-ml/repository/codelist/v2018-1/gc_T5.xml)

Code	Description	Adoption note	Version status	Date of insertion
A	Open			
B	Folded once, not looped			
C	Folded twice, not looped			
H	Folded once, looped			
I	Folded twice, looped			
J	Without inner object, right side inside			
K	On carton or spooling plank, right side inside			
L	On spool (for pressure sensitive products), right side inside			
M	Without inner object, left side inside			
N	On carton or spooling plank, left side inside			
O	On spool (for pressure sensitive products), left side inside			
P	Without inner object, right side inside (deprecated code)			
Q	On carton, right side inside			
R	On wooden stick, right side inside			
S	Without inner object, left side inside (deprecated code)			
T	On carton, left side inside			
U	On wooden stick, left side inside			

## T6 - fabric piece outer packing

code specifying the type of outer wrapping or packing used for the fabric piece

Agency name: eBIZ

tabella cod.: T6

File codes list (Generic code): [http://www.ebiz.enea.it/moda-ml/repository/codelist/v2018-1/gc\\_T6.xml](http://www.ebiz.enea.it/moda-ml/repository/codelist/v2018-1/gc_T6.xml)

Code	Description	Adoption note	Version status	Date of insertion
0	Not wrapped			

1	Totally wrapped			
2	Wrapped, one side open			
3	Wrapped, both sides open			
4	Wrapped, one side open, with show corner			
5	Wrapped in cartons			
6	Double wrapped			

### T8 - Modes of Transport

way of transport, in general or referred to the specified leg

Agency name: eBIZ

tabella cod.: T8

File codes list (Generic code): [http://www.ebiz.enea.it/moda-ml/repository/codelist/v2018-1/gc\\_T8.xml](http://www.ebiz.enea.it/moda-ml/repository/codelist/v2018-1/gc_T8.xml)

Code	Description	Adoption note	Version status	Date of insertion
1	MARITIME TRANSPORT			
10	Courier			01/07/2013
2	RAIL TRANSPORT			
3	ROAD TRANSPORT			
4	AIR TRANSPORT			
5	MAIL			
6	AIR + SHIP TRANSPORT			
8	INLAND WATER TRANSPORT			
9	MODE UNKNOWN			

## Annex C

### New or changed elements towards previous version

Changes or added elements (changes in description excluded; changes in aggregation notes and best practice included): 171

Test Type	Tag	Status	Item type	Changes related to
Attrib	acsPack Code	NEW	Accessory packing code	Has NEW attribute: numbering organisation code
Attrib	acsPack Code	NEW	Accessory packing code	Has NEW attribute: code list reference
Attrib	acsPack Code	NEW	Accessory packing code	Has NEW attribute: code list name
Attrib	acsPack Code	NEW	Accessory packing code	Has NEW attribute: code list version
Elem(E)	acsPack Code	UPDATE	Accessory packing code	Property: class Old value: <i>garment accessory</i> New value: <i>accessory</i>
Elem(E)	acsPack	UPDATE	Accessory packing details	Property: class Old value: <i>garment accessory</i> New value: <i>accessory</i>
Elem(E)	acsPack Text	UPDATE	Accessory packing text	Property: Length_Max Old value: 40 New value: 250
Elem(E)	acsPack Text	UPDATE	Accessory packing text	Property: class Old value: <i>garment accessory</i> New value: <i>accessory</i>
Child	actualPackageUnit	NEW	actual package unit	Has NEW child of: transport package text
Child	actualPackageUnit	NEW	actual package unit	Has NEW child of: transport package dimensions
Child	actualPackageUnit	NEW	actual package unit	Has NEW child of: actual items per package
Attrib	actualPackageUnit	NEW	actual package unit	Has NEW attribute: package level identifier
Child	actualPackageUnit	NEW	actual package unit	Has NEW child of: volume measure

Child	actualPackageUnit	NEW	actual package unit	Has NEW child of: items list
Child	actualPackageUnit	NEW	actual package unit	Has NEW child of: packages list
Child	actualPackageUnit	NEW	actual package unit	Has NEW child of: package identification
Child	actualPackageUnit	NEW	actual package unit	Has NEW child of: package model code
Child	actualPackageUnit	NEW	actual package unit	Has NEW child of: general note
Child	actualPackageUnit	NEW	actual package unit	Has NEW child of: transport package code
Child	actualPackageUnit	NEW	actual package unit	Has NEW child of: net weight measure
Child	actualPackageUnit	NEW	actual package unit	Has NEW child of: gross weight measure
Element(l)	actualItemsPerPackage	NEW	actual items per package	
Element(l)	actualPackageUnit	NEW	actual package unit	
Attribute	additionalIdentifier	NEW	Additional Party Identifier	Has NEW attribute: numbering organisation code
Attribute	additionalIdentifier	NEW	Additional Party Identifier	Has NEW attribute: id Qualifier
Element(l)	additionalIdentifier	NEW	Additional Party Identifier	
Element(E)	art	UPDATE	article identifier	Property: Length_Max Old value: 25 New value: 80
Attribute	art	UPDATE	article identifier	Its attribute: code list reference  Property: Aggregation Note_English Old value: <i>this attribute should be ALTERNATIVE to the others</i> New value: <i>at least one out of this attribute and "numberingOrg" should be set</i>

Element(l)	attachment	NEW	attachment	
Child	attachment	NEW	attachment	Has NEW child of: file name
Child	attachment	NEW	attachment	Has NEW child of: external reference
Child	attachment	NEW	attachment	Has NEW child of: binary object
Attribute	binaryObject	NEW	binary object	Has NEW attribute: encoding
Attribute	binaryObject	NEW	binary object	Has NEW attribute: mime
Attribute	binaryObject	NEW	binary object	Has NEW attribute: format
Attribute	binaryObject	NEW	binary object	Has NEW attribute: character set
Element(l)	binaryObject	NEW	binary object	
Child	buyer	NEW	Buyer (*)	Has NEW child of: Party identifier
Child	buyer	NEW	Buyer (*)	Has NEW child of: Additional Party Identifier
Attribute	buyer	NEW	Buyer (*)	Has NEW attribute: sender Party qualifier
Element(l)	characterSetCode	NEW	character set code	
Element(l)	characterSet	NEW	character set	
Element(E)	packageContainerN	UPD ATED	container reference	Property: Length_Max Old value: 25 New value: 40
Element(E)	deliveryPlace	UPD ATED	delivery place	Property: Length_Max Old value: 40 New value: 250
Attribute	description	NEW	description	Has NEW attribute: ln
Element(E)	description	UPD ATED	description	Property: Length_Max Old value: 70 New value: 250
Attribute	despatchDate	NEW	despatch date	Has NEW attribute: date format
Element(l)	despatchDate	NEW	despatch date	
Element(l)	despatchPlace	NEW	despatch place	

Elem(E)	email	UPDATE	e-mail	Property: Length_Max Old value: 80 New value: 250
Elem(I)	encoding Code	NEW	encoding code	
Elem(I)	encoding	NEW	encoding	
Child	externalReference	NEW	external reference	Has NEW child of: uri
Child	externalReference	NEW	external reference	Has NEW child of: format code
Child	externalReference	NEW	external reference	Has NEW child of: character set code
Child	externalReference	NEW	external reference	Has NEW child of: mime code
Child	externalReference	NEW	external reference	Has NEW child of: encoding code
Elem(I)	externalReference	NEW	external reference	
Elem(E)	piecePackingText	UPDATE	fabric piece packing text	Property: Length_Max Old value: 40 New value: 250
Attribute	fileName	NEW	file name	Has NEW attribute: numbering organisation code
Elem(I)	fileName	NEW	file name	
Attribute	fillingCriterion	NEW	filling criterion	Has NEW attribute: progressive number
Elem(I)	fillingCriterion	NEW	filling criterion	
Elem(I)	formatCode	NEW	format code	
Elem(I)	format	NEW	format	
Attribute	garPackCode	NEW	garment packing code	Has NEW attribute: code list name
Attribute	garPackCode	NEW	garment packing code	Has NEW attribute: numbering organisation code
Attribute	garPackCode	NEW	garment packing code	Has NEW attribute: code list version
Attribute	garPackCode	NEW	garment packing code	Has NEW attribute: code list reference

Child	garPack	NEW	garment packing	Has NEW child of: garment packing text
Child	garPack	NEW	garment packing	Has NEW child of: garment packing code
Element(l)	garPack Code	NEW	garment packing code	
Element(l)	garPack	NEW	garment packing	
Element(l)	garPackText	NEW	garment packing text	
Attribute	note	UPDATED	general note	Its attribute: numbering organisation code  Property: Aggregation Note_English Old value: New value: <i>must be used to specify the organization that created the list of codes used in "noteLabel"</i>
Child	handling Char	NEW	handling Characteristics	Has NEW child of: general note
Child	handling Char	NEW	handling Characteristics	Has NEW child of: garment packing
Child	handling Char	NEW	handling Characteristics	Has NEW child of: yarn presentation details
Child	handling Char	NEW	handling Characteristics	Has NEW child of: stackability Level
Child	handling Char	NEW	handling Characteristics	Has NEW child of: gross weight measure
Child	handling Char	NEW	handling Characteristics	Has NEW child of: net weight measure
Child	handling Char	NEW	handling Characteristics	Has NEW child of: volume measure
Child	handling Char	NEW	handling Characteristics	Has NEW child of: handling type
Child	handling Char	NEW	handling Characteristics	Has NEW child of: Accessory packing details
Child	handling Char	NEW	handling Characteristics	Has NEW child of: sortable Indicator



Child	handling Char	NEW	handling Characteristics	Has NEW child of: Fabric piece packing details
Attribute	handling Type	NEW	handling type	Has NEW attribute: In
Element(l)	handling Char	NEW	handling Characteristics	
Element(l)	handling Type	NEW	handling type	
Element(l)	idQualifier	NEW	id Qualifier	
Element(l)	isURL	NEW	is URL	
Child	itemIdentification	NEW	item identification	Has NEW child of: serial number
Element(l)	itemIdentification	NEW	item identification	
Child	itemsList	NEW	items list	Has NEW child of: quality level
Child	itemsList	NEW	items list	Has NEW child of: item identification
Attribute	itemsPer Package	NEW	items per package	Has NEW attribute: unit of measure code
Element(l)	itemsList	NEW	items list	
Element(l)	itemsPer Package	NEW	items per package	
Element(E)	legalName	UPDATE	Legal name	Property: Length_Max Old value: 80 New value: 250
Element(E)	itemID	UPDATE	line item number	Property: Length_Max Old value: 6 New value: 40
Attribute	lineN	UPDATE	line number	Its attribute: VAT rate  Property: Aggregation Note_English Old value: New value: <i>Deprecated, prefer dtScheme when available.</i>
Element(l)	In	NEW	In	
Element(l)	mimeCode	NEW	mime code	
Element(l)	mime	NEW	mime	

Attrib	minItems PerPackage	NEW	minimum items per package	Has NEW attribute: unit of measure code
Elem(I)	minItems PerPackage	NEW	minimum items per package	
Child	packageIdentification	NEW	package identification	Has NEW child of: package number
Child	packageIdentification	NEW	package identification	Has NEW child of: serial number
Attrib	packageModelCode	NEW	package model code	Has NEW attribute: numbering organisation code
Elem(E)	packageNumber	UPDATED	package number	Property: Length_Max Old value: 25 New value: 40
Elem(I)	packageIdentification	NEW	package identification	
Elem(I)	packageModelCode	NEW	package model code	
Child	packagesList	NEW	packages list	Has NEW child of: package identification
Elem(I)	packagesList	NEW	packages list	
Elem(I)	progressive	NEW	progressive number	
Attrib	qualityLevel	NEW	quality level	Has NEW attribute: numbering organisation code
Attrib	qualityLevel	NEW	quality level	Has NEW attribute: code list reference
Attrib	qualityLevel	NEW	quality level	Has NEW attribute: code list version
Attrib	qualityLevel	NEW	quality level	Has NEW attribute: code list name
Elem(I)	qualityLevel	NEW	quality level	
Child	refDoc	NEW	reference document details	Has NEW child of: attachment
Child	refDoc	UPDATED	reference document details	relationship with child: document identifier  Property: BestPractice_English Old value: New value: <i>numberingOrg indicates the role that produced the docum</i>

				<i>ent identifier (it is allowed to declare two different ones -e.g. customer and supplier - with two docID with different numberingOrg</i>
Attrib	season	NEW	season identifier	Has NEW attribute: code list reference
Attrib	season	NEW	season identifier	Has NEW attribute: numbering organisation code
Attrib	season	NEW	season identifier	Has NEW attribute: code list name
Attrib	season	NEW	season identifier	Has NEW attribute: code list version
Attrib	serialIN	NEW	serial number	Has NEW attribute: id Qualifier
Element(E)	serialIN	UPDATE	serial number	Property: Length_Max Old value: 15 New value: 250
Child	shipInfo	NEW	shipping information	Has NEW child of: actual package unit
Child	shipInfo	UPDATE	shipping information	relationship with child: Transport packages details  Property: Aggregation Note_English Old value: <i>this data group must be iterated for each type of package</i> New value: <i>this element must be iterated for each type of package</i>
Child	shipInfo	UPDATE	shipping information	relationship with child: Transport information  Property: Cardmax Old value: 5 New value: 9
Element(I)	sortableIndicator	NEW	sortable Indicator	
Element(I)	stackabilityLevel	NEW	stackability Level	
Element(I)	subDept	NEW	department identifier	
Child	supplier	NEW	Supplier (*)	Has NEW child of: Party identifier
Child	supplier	NEW	Supplier (*)	Has NEW child of: Additional Party Identifier
Attrib	supplier	NEW	Supplier (*)	Has NEW attribute: sender Party qualifier
Child	TAheader	UPDATE	TA header	relationship with child: general note  Property: Cardmax Old value: 19 New value: 99

Element(E)	incoTermText	UPDATE	terms of trade text	Property: Length_Max Old value: 70 New value: 250
Element(E)	method	UPDATE	test method identifier	Property: Length_Max Old value: 25 New value: 80
Child	thirdParty	NEW	Third Party (*)	Has NEW child of: Party identifier
Attribute	thirdParty	NEW	Third Party (*)	Has NEW attribute: sender Party qualifier
Element(E)	transConditionText	UPDATE	transport condition - text	Property: Length_Max Old value: 100 New value: 250
Child	transInfo	NEW	Transport information	Has NEW child of: despatch place
Child	transInfo	NEW	Transport information	Has NEW child of: despatch date
Child	transInfo	NEW	Transport information	Has NEW child of: effective delivery date
Attribute	transInfo	NEW	Transport information	Has NEW attribute: progressive number
Element(E)	packageText	UPDATE	transport package text	Property: Length_Max Old value: 40 New value: 80
Child	packages	NEW	Transport packages details	Has NEW child of: items per package
Child	packages	NEW	Transport packages details	Has NEW child of: minimum items per package
Child	packages	NEW	Transport packages details	Has NEW child of: description
Child	packages	NEW	Transport packages details	Has NEW child of: handling Characteristics
Child	packages	NEW	Transport packages details	Has NEW child of: package model code
Child	packages	NEW	Transport packages details	Has NEW child of: filling criterion
Child	packages	UPDATE	Transport packages details	relationship with child: epc list  Property: Aggregation Note_English Old value: <i>here the RFID tags of the packages can be identified</i> New value: <i>this element is DEPRECATED, please use the specific elements</i>

Attrib	uri	NEW	uri	Has NEW attribute: is URL
Elem(l)	uri	NEW	uri	
Child	YAitem	NEW	YA item	Has NEW child of: package number
Child	YAitem	NEW	YA item	Has NEW child of: items list
Child	YAitem	NEW	YA item	Has NEW child of: Third Party
Child	YAitem	NEW	YA item	Has NEW child of: shipping information
Child	YAitem	UPDATED	YA item	relationship with child: yarn specifications  Property: Cardmax Old value: 19 New value: 99
Child	YAitem	UPDATED	YA item	relationship with child: reference document details  Property: Cardmax Old value: 1 New value: 9
Child	YAitem	UPDATED	YA item	relationship with child: product quantity  Property: BestPractice_English Old value: New value: <i>this element can have two instances only if the units of measure are different</i>
Child	YAitem	UPDATED	YA item	relationship with child: dye bath identifier  Property: Aggregation Note_English Old value: New value: <i>The dyeN instances must differ by value of the numbering Org attribute</i>
Child	YAitem	UPDATED	YA item	relationship with child: general note  Property: Cardmax Old value: 19 New value: 99
Child	YAitem	UPDATED	YA item	relationship with child: manufacture lot identifier  Property: Aggregation Note_English Old value: New value: <i>The lotN instances must differ by value of the numbering Org attribute</i>

Element(E)	yarnCharText	UPDATE	yarn characteristics text	Property: Length_Max Old value: 40 New value: 250
Element(E)	yarnOutWrapText	UPDATE	yarn outer packing text	Property: Length_Max Old value: 40 New value: 250
Child	yarnCode	UPDATE	Yarn product code	relationship with child: description  Property: Aggregation Note_English Old value: New value: <i>Product description</i>
Child	yarnCode	UPDATE	Yarn product code	relationship with child: description  Property: Cardmax Old value: 1 New value: 999

## Annex D

### New or changed tables and codes towards previous version

Changes or added items (changes in CodeListAgencyName excluded; changes in adoption notes and code description included): 137

Test Type	Status	Table code	Table description	Code	Change description
Code	NEW	NT10		<i>PKL</i> (packing list)	
Table	UPDATE	NT100	eBIZ TCFUpstream version		Description_English Old value: <i>eBIZ Moda-ML version</i> New value: <i>eBIZ TCFUpstream version</i>
Code	NEW	NT100		<i>2018-1</i> (v2018-1)	
Code	NEW	NT100		<i>draft</i> (draft)	
Table	UPDATE	NT16	VAT rate or code		Generalities Old value: <i>VAT rate or code ( deprecated, use dtScheme element )</i> New value: <i>VAT rate or code ( DEPRECATED, use dtScheme element )</i>
Code	NEW	NT2		<i>AU</i> (Auditor)	
Code	NEW	NT2		<i>CE</i> (Certification authority)	
Code	NEW	NT2		<i>SC</i> (Sub contractor)	
Code	NEW	NT2		<i>SM</i> (Service/ePlatform manager)	
Table	NEW	NT51	Filling Criterion for Package homogeneity		
Code	NEW	NT51		<i>COL</i> (Colour)	
Code	NEW	NT51		<i>MOD</i> (Model)	
Code	NEW	NT51		<i>SIZ</i> (Size)	
Code	NEW	NT6		<i>EB</i> (eBIZ)	

Code	UPDATE	NT6		<i>ML</i> (DEPRECATED)	adoption_note Old value: New value: <i>DEPRECATED</i>
Table	NEW	NT60	language, codes from ISO 639-1 (subset)		
Code	NEW	NT60		<i>F</i> (Female)	
Code	NEW	NT60		<i>af</i> (Afrikaans)	
Code	NEW	NT60		<i>ar</i> (Arabic)	
Code	NEW	NT60		<i>be</i> (Belarusian)	
Code	NEW	NT60		<i>bg</i> (Bulgarian)	
Code	NEW	NT60		<i>bn</i> (Bengali)	
Code	NEW	NT60		<i>bo</i> (Tibetan)	
Code	NEW	NT60		<i>bs</i> (Bosnian)	
Code	NEW	NT60		<i>ca</i> (Catalan, Valencian)	
Code	NEW	NT60		<i>cs</i> (Czech)	
Code	NEW	NT60		<i>da</i> (Danish)	
Code	NEW	NT60		<i>de</i> (German)	
Code	NEW	NT60		<i>el</i> (Greek, Modern (1453-))	
Code	NEW	NT60		<i>en</i> (English)	
Code	NEW	NT60		<i>eo</i> (Esperanto)	
Code	NEW	NT60		<i>es</i> (Spanish, Castilian)	
Code	NEW	NT60		<i>et</i> (Estonian)	
Code	NEW	NT60		<i>eu</i> (Basque)	
Code	NEW	NT60		<i>fa</i> (Persian)	



Co de	NE W	NT 60		<i>fi</i> (Finnish)	
Co de	NE W	NT 60		<i>fr</i> (French)	
Co de	NE W	NT 60		<i>ga</i> (Irish)	
Co de	NE W	NT 60		<i>gd</i> (Gaelic, Scottish Gaelic)	
Co de	NE W	NT 60		<i>gn</i> (Guarani)	
Co de	NE W	NT 60		<i>he</i> (Hebrew)	
Co de	NE W	NT 60		<i>hr</i> (Croatian)	
Co de	NE W	NT 60		<i>ht</i> (Haitian, Haitian Creole)	
Co de	NE W	NT 60		<i>hu</i> (Hungarian)	
Co de	NE W	NT 60		<i>hy</i> (Armenian)	
Co de	NE W	NT 60		<i>ia</i> (Interlingua (International Auxiliary Language Association))	
Co de	NE W	NT 60		<i>id</i> (Indonesian)	
Co de	NE W	NT 60		<i>is</i> (Icelandic)	
Co de	NE W	NT 60		<i>it</i> (Italian)	
Co de	NE W	NT 60		<i>ja</i> (Japanese)	
Co de	NE W	NT 60		<i>jv</i> (Javanese)	
Co de	NE W	NT 60		<i>ka</i> (Georgian)	
Co de	NE W	NT 60		<i>km</i> (Central Khmer)	
Co de	NE W	NT 60		<i>ko</i> (Korean)	
Co de	NE W	NT 60		<i>ku</i> (Kurdish)	
Co de	NE W	NT 60		<i>lb</i> (Luxembourgish, Letzeburgesch)	

Co de	NE W	NT 60		<i>lo</i> (Lao)	
Co de	NE W	NT 60		<i>lt</i> (Lithuanian)	
Co de	NE W	NT 60		<i>lv</i> (Latvian)	
Co de	NE W	NT 60		<i>mg</i> (Malagasy)	
Co de	NE W	NT 60		<i>mk</i> (Macedonian)	
Co de	NE W	NT 60		<i>mn</i> (Mongolian)	
Co de	NE W	NT 60		<i>mt</i> (Maltese)	
Co de	NE W	NT 60		<i>nl</i> (Dutch, Flemish)	
Co de	NE W	NT 60		<i>no</i> (Norwegian)	
Co de	NE W	NT 60		<i>pl</i> (Polish)	
Co de	NE W	NT 60		<i>pt</i> (Portuguese)	
Co de	NE W	NT 60		<i>ro</i> (Romanian, Moldavian, Moldovan)	
Co de	NE W	NT 60		<i>ru</i> (Russian)	
Co de	NE W	NT 60		<i>se</i> (Northern Sami)	
Co de	NE W	NT 60		<i>sk</i> (Slovak)	
Co de	NE W	NT 60		<i>sl</i> (Slovenian)	
Co de	NE W	NT 60		<i>sm</i> (Samoan)	
Co de	NE W	NT 60		<i>so</i> (Somali)	
Co de	NE W	NT 60		<i>sq</i> (Albanian)	
Co de	NE W	NT 60		<i>sr</i> (Serbian)	
Co de	NE W	NT 60		<i>sv</i> (Swedish)	
Co de	NE W	NT 60		<i>sw</i> (Swahili)	

Code	NE W	NT 60		<i>ta</i> (Tamil)	
Code	NE W	NT 60		<i>th</i> (Thai)	
Code	NE W	NT 60		<i>tr</i> (Turkish)	
Code	NE W	NT 60		<i>uk</i> (Ukrainian)	
Code	NE W	NT 60		<i>ur</i> (Urdu)	
Code	NE W	NT 60		<i>uz</i> (Uzbek)	
Code	NE W	NT 60		<i>vi</i> (Vietnamese)	
Code	NE W	NT 60		<i>zh</i> (Chinese)	
Code	NE W	NT 7		<i>CMK</i> (square centimetre)	
Code	NE W	NT 7		<i>CMQ</i> (cubic centimetre)	
Code	NE W	NT 7		<i>E37</i> (pixel)	
Code	NE W	NT 7		<i>KWH</i> (kilowatthours)	
Code	NE W	NT 7		<i>MMK</i> (square millimetre)	
Code	NE W	NT 7		<i>MTK</i> (square metre)	
Code	NE W	NT 7		<i>CO2TON</i> (ton of CO2)	
Table	UPD ATE D	NT 7	unit of measure		OtherExternalReferenceURL Old value: New value: <a href="http://docs.oasis-open.org/ubl/os-UBL-2.1/cl/gc/default/UnitOfMeasureCode-2.1.gc#">#http://docs.oasis-open.org/ubl/os-UBL-2.1/cl/gc/default/UnitOfMeasureCode-2.1.gc#</a>
Table	UPD ATE D	NT 7	unit of measure		Description_English Old value: <i>unity of measure</i> New value: <i>unit of measure</i>
Code	NE W	T1 1		<i>4G</i> (Box, fibreboard )	
Code	NE W	T1 1		<i>4H</i> (Box, plastic )	
Code	NE W	T1 1		<i>5H</i> (Bag, woven plastic )	
Code	NE W	T1 1		<i>5L</i> (Bag, textile )	

Co de	UPD ATE D	T1 1		<i>5M</i> (Bag, paper)	Text_English Old value: <i>bag, paper</i> New value: <i>Bag, paper</i>
Co de	NE W	T1 1		<i>AJ</i> (Cone )	
Co de	NE W	T1 1		<i>BL</i> (Bale, compressed )	
Co de	NE W	T1 1		<i>BN</i> (Bale, non-compress ed )	
Co de	UPD ATE D	T1 1		<i>BX</i> (Box)	Text_English Old value: <i>box</i> New value: <i>Box</i>
Co de	NE W	T1 1		<i>CI</i> (Canister )	
Co de	NE W	T1 1		<i>CL</i> (Coil )	
Co de	NE W	T1 1		<i>CN</i> (Container, not other wise specified as tran sport equipment )	
Co de	NE W	T1 1		<i>CS</i> (Case )	
Co de	NE W	T1 1		<i>CT</i> (Carton )	
Co de	NE W	T1 1		<i>EC</i> (Bag, plastic )	
Co de	NE W	T1 1		<i>ED</i> (Case, with pallet bas e )	
Co de	NE W	T1 1		<i>EE</i> (Case, with pallet bas e, wooden )	
Co de	NE W	T1 1		<i>EF</i> (Case, with pallet bas e, cardboard )	
Co de	NE W	T1 1		<i>EG</i> (Case, with pallet bas e, plastic )	
Co de	NE W	T1 1		<i>EH</i> (Case, with pallet bas e, metal )	
Co de	NE W	T1 1		<i>FX</i> (Bag, flexible contain er )	
Co de	NE W	T1 1		<i>HN</i> (Hanger )	

Code	NE W	T1 1		<i>NF</i> (Unpacked or unpackaged, single unit)	
Code	NE W	T1 1		<i>NG</i> (Unpacked or unpackaged, multiple units)	
Code	NE W	T1 1		<i>OA</i> (Pallet, CHEP 40 cm x 60 cm)	
Code	NE W	T1 1		<i>OB</i> (Pallet, CHEP 80 cm x 120 cm)	
Code	NE W	T1 1		<i>OC</i> (Pallet, CHEP 100 cm x 120 cm)	
Code	NE W	T1 1		<i>OD</i> (Pallet, AS 4068-1993)	
Code	NE W	T1 1		<i>OE</i> (Pallet, ISO T11)	
Code	NE W	T1 1		<i>RJ</i> (Rack, clothing hanger)	
Code	NE W	T1 1		<i>RL</i> (Reel)	
Code	NE W	T1 1		<i>SO</i> (Spool)	
Code	NE W	T1 1		<i>ZZ</i> (Mutually defined)	
Table	UPD ATE D	T1 1	transport package type		OtherExternalReferenceURL Old value: New value: <a href="http://docs.oasis-open.org/ubl/os-UBL-2.1/cl/gc/default/TransportEquipmentTypeCode-2.1.gc#">#http://docs.oasis-open.org/ubl/os-UBL-2.1/cl/gc/default/TransportEquipmentTypeCode-2.1.gc#</a>
Table	UPD ATE D	T1 1	transport package type		Generalities Old value: <i>code specifying the type of package used for transport and delivery</i> New value: <i>code specifying the type of package used for transport and delivery (subset of UN/ECE 8053 and UBL TransportEquipmentTypeCode-2.1)</i>
Code	NE W	T2 1		<i>BOR</i> (blanket order)	
Code	NE W	T2 1		<i>CEO</i> (Certificate of origin)	
Code	NE W	T2 1		<i>CER</i> (Certificate)	
Code	UPD ATE D	T2 1		<i>CTR</i> (Contract)	Text_English Old value: <i>contract</i> New value: <i>Contract</i>

Co de	NE W	T2 1		<i>MCI</i> (Visual merchandising instruction)	
Co de	NE W	T2 1		<i>VMI</i> (visual merchandising instructions)	
Co de	NE W	T4 4		CO (company identification code)	