



<http://www.moda-ml.org>

IMPLEMENTATION GUIDE
TRANSACTION "TEXTILE DARN ORDER"

Version: 2013-1

Date of release: 18/11/2011

Document code: G012

XML Schema repository:<http://www.moda-ml.org/moda-ml/repository/schema/v2013-1/default.asp>

Guides repository:<http://www.moda-ml.org/moda-ml/repository/guide/v2013-1/default.asp>

Guide filename: G012-MODA-ML-TextileDarnOrder.pdf

1. BUSINESS DESCRIPTION

1.1 Scope

The present guide has been issued to assist the companies of the Textile-Clothing sector in the implementation of the standard XML document type "Textile DARN ORDER", providing all the instruction required for its use in any context of e-commerce between Fabric Producers and Darn Subcontractors.

All the rules required for the construction and validation of the document are embedded into the specific XML-Schema, which is detailed in section "Implementation guide".

1.2 Generalities

The document "Textile Darn Order" is used by the Fabric Producer to specify the darning operations required on each fabric piece and possibly the standard (or maximum) worktimes allowed with the related prices.

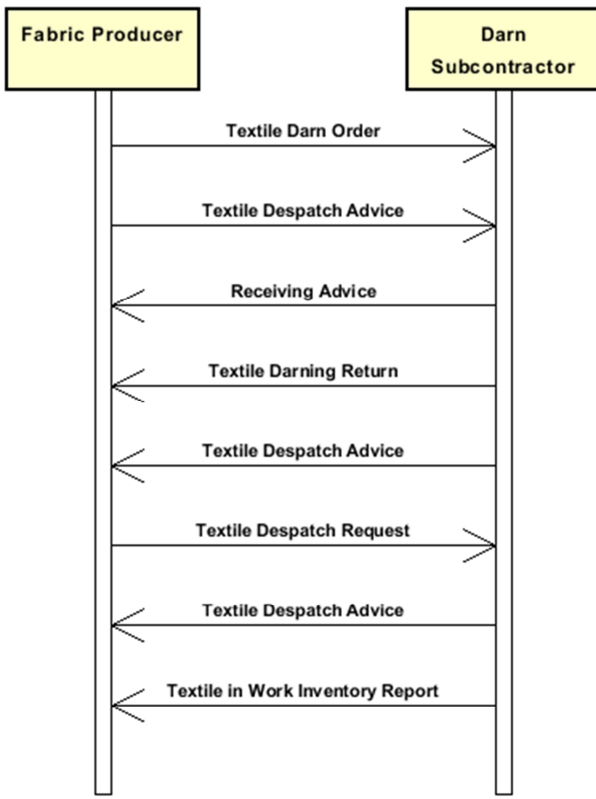
The Order can refer to one or more pieces and can be used either in conjunction with the "Textile Despatch Advise" (1 DA : 1 Order) or independently.

In the first instance the reference to the Despatch Advise must be given in the Header; in the second each piece can have at item level its reference to the transport document with which was sent to the Subcontractor.

EACH ITEM CONTAINS A JOB ORDER FOR ONE OR MORE PIECES OF THE SAME TEXTILE ARTICLE.

The Job cost can be calculated from a metre rate or from an hourly rate times a given operation time or from a combination of both.

1.3. Possible scenario



2. IMPLEMENTATION GUIDE

2.1 General structure of XML document

All the business data that can be exchanged through this class of documents are shown in the following "document structure", that provides a simplified vision of the Schema.

In particular:

- the two numbers following each element define its "cardinality" (minimum and maximum number of occurrences); the minimum equal zero indicates that the element is optional, the minimum greater than zero indicates that is mandatory;
- the bold character denotes the complex elements (aggregates of simple elements) that were built for the sake of functionality and re-usability of some complex informations sets. The child elements in each parent element are easily spotted as "indented";
- the symbol "@" denotes an attribute of the preceding element; here "the usage indicator (optional, required, ...)" is shown in square brackets.

Structure

TEXDarnOrder

@msgfunction [Optional] [Default= OR]

@version [Optional] [Default= 2013-1]

@useProfile [Optional]

| **MOheader 1-1**

| | msgN 1-1

| | - choose -

| | msgID 0-1

| | - or -

| | docID 0-1

| | *@numberingOrg [Optional]*

| | - end choose -

| | msgDate 1-1

| | *@dateForm [Optional]*

| | **refDoc 0-9**

| | *@docType [Required]*

| | | docID 1-2

| | | *@numberingOrg [Optional]*

| | | docDate 0-1

| | | *@dateForm [Optional]*

| | | season 0-1

| | | itemID 0-1

| | **buyer 1-1**

| | *@logo [Optional]*

| | *@sender [Optional]*

| | | id 1-1

| | | *@numberingOrg [Optional]*

| | | legalName 0-1

| | | dept 0-1

| | | person 0-1

| | | *@email [Optional]*

| | | *@phone [Optional]*

| | | *@fax [Optional]*

| | | street 0-1

| | | city 0-1

| | | subCountry 0-1

| | | country 0-1

| | | postCode 0-1

| | **subContractor 1-1**

| @sender [Optional]
| id 1-1
| @numberingOrg [Optional]
| legalName 0-1
| dept 0-1
| person 0-1
| @email [Optional]
| @phone [Optional]
| @fax [Optional]
| street 0-1
| city 0-1
| subCountry 0-1
| country 0-1
| postCode 0-1

| **thirdParty 0-1**

| @VAT [Optional]
| @role [Required]
| @sender [Optional]
| id 1-1
| @numberingOrg [Optional]
| legalName 0-1
| dept 0-1
| person 0-1
| @email [Optional]
| @phone [Optional]
| @fax [Optional]
| street 0-1
| city 0-1
| subCountry 0-1
| country 0-1
| postCode 0-1

| note 0-19

| @numberingOrg [Optional]
| @codeList [Optional]
| @noteLabel [Optional]

| **MObody 1-1**

| **MOitem 1-unbounded**

| @transReason [Optional]
| lineN 1-1
| @VAT [Optional]
| **texCode 0-1**
| @numberingOrg [Optional]
| art 1-1
| @numberingOrg [Optional]
| @codeList [Optional]
| @listName [Optional]
| @listVersion [Optional]
| pattern 0-1
| @numberingOrg [Optional]
| @codeList [Optional]
| @listName [Optional]
| @listVersion [Optional]
| color 0-1
| @numberingOrg [Optional]
| @codeList [Optional]
| @listName [Optional]
| @listVersion [Optional]
| added 0-9
| @numberingOrg [Optional]
| @addType [Optional]

```

| | | | description 0-1
| | | | qty 1-1
| | | | @um [Required]
- choose -
| | | | pieceChain 1-1
| | | | | serialN 1-1
| | | | | @numberingOrg [Optional]
| | | | | pieceLength 0-1
| | | | | @um [Optional] [Default= MTR]
| | | | | pieceWidth 0-1
| | | | | @um [Optional] [Default= CMT]
| | | | | pieceWeight 0-1
| | | | | @um [Optional] [Default= KGM]
| | | | | lotN 0-1
| | | | | @numberingOrg [Optional]
| | | | | dyeN 0-1
| | | | | @numberingOrg [Optional]
| | | | | packageN 0-1
| | | | | @numberingOrg [Optional]
| | | | | @packageContainerN [Optional]
| | | | | piecePack 0-1
| | | | | - choose -
| | | | | | piecePackText 1-1
| | | | | - or -
| | | | | | pieceInnWrap1 1-1
| | | | | | pieceInnWrap2 0-1
| | | | | | pieceOutWrap 0-1
| | | | | - end choose -
| | | | | pieceCut 0-99
| | | | | | serialN 1-1
| | | | | | @numberingOrg [Optional]
| | | | | | pieceLength 0-1
| | | | | | @um [Optional] [Default= MTR]
| | | | | | pieceWeight 0-1
| | | | | | @um [Optional] [Default= KGM]
- or -
| | | | | piece 1-1
| | | | | @endUse [Optional]
| | | | | | serialN 1-3
| | | | | | @numberingOrg [Optional]
| | | | | | EPC 0-1
| | | | | | @numberingOrg [Optional]
| | | | | | @TID [Optional]
| | | | | | totFault 0-1
| | | | | | pieceStatus 0-1
| | | | | | pieceLength 0-1
| | | | | | @um [Optional] [Default= MTR]
| | | | | | pieceWidth 0-1
| | | | | | @um [Optional] [Default= CMT]
| | | | | | pieceCutWidth 0-1
| | | | | | @um [Optional] [Default= CMT]
| | | | | | pieceWeight 0-1
| | | | | | @um [Optional] [Default= KGM]
| | | | | | pieceWeightM 0-1
| | | | | | @um [Optional] [Default= GRM]
| | | | | | pieceAllow 0-1
| | | | | | @um [Required]
| | | | | | lotN 0-1
| | | | | | @numberingOrg [Optional]
| | | | | | dyeN 0-1
| | | | | | @numberingOrg [Optional]

```

```

| | | | mixMatch 0-1
| | | | | @numberingOrg [Optional]
| | | | packageN 0-1
| | | | | @numberingOrg [Optional]
| | | | | @packageContainerN [Optional]
| | | | | piecePack 0-1
| | | | | - choose -
| | | | | | piecePackText 1-1
| | | | | | - or -
| | | | | | pieceInnWrap1 1-1
| | | | | | pieceInnWrap2 0-1
| | | | | | pieceOutWrap 0-1
| | | | | - end choose -
| | | | - end choose -
| | | | | pieceMap 0-1
| | | | | @source [Required]
| | | | | | totFault 1-1
| | | | | | | pieceFault 0-99
| | | | | | | @faultRank [Required]
| | | | | | | @faultShape [Optional]
| | | | | | | - choose -
| | | | | | | | fabricFaultText 1-1
| | | | | | | | - or -
| | | | | | | | fabricFault 1-1
| | | | | | | | - end choose -
| | | | | | | | warpStart 1-1
| | | | | | | | | @um [Optional] [Default= MTR]
| | | | | | | | warpEnd 0-1
| | | | | | | | | @um [Optional] [Default= MTR]
| | | | | | | | weftStart 0-1
| | | | | | | | | @um [Optional] [Default= CMT]
| | | | | | | | weftEnd 0-1
| | | | | | | | | @um [Optional] [Default= CMT]
| | | | | | | | pieceAllow 0-1
| | | | | | | | | @um [Required]
| | | | | | | | note 0-19
| | | | | | | | | @numberingOrg [Optional]
| | | | | | | | | @codeList [Optional]
| | | | | | | | | @noteLabel [Optional]
| | | | | | darnJobTicket 0-9
| | | | | | | job 1-1
| | | | | | | jobTime 0-1
| | | | | | | jobTimeBasis 0-1
| | | | | | | | @um [Required]
| | | | | | | | darnJobPrice 0-2
| | | | | | | | | jobPrice 0-1
| | | | | | | | | priceBasis 0-1
| | | | | | | | | @um [Required]
| | | | | | | deliveryDate 0-1
| | | | | | | | @dateForm [Optional]
| | | | | | | | dtScheme 0-1
| | | | | | | | @taxType [Required]
| | | | | | | | | taxCategory 0-1
| | | | | | | | | taxRate 0-1
| | | | | | | | | legalRef 0-1
| | | | | | | | | | @codeList [Required]
| | | | | | | | | note 0-19
| | | | | | | | | | @numberingOrg [Optional]
| | | | | | | | | | @codeList [Optional]
| | | | | | | | | | @noteLabel [Optional]
| | | | | | | note 0-19

```

| | | @numberingOrg [Optional]
| | | @codeList [Optional]
| | | @noteLabel [Optional]

| **MOtotals 0-1**
| | totQty 2-2
| | @um [Required]

2.2 Detailed description of document elements

Following tables show all elements (complex and simple) used in this document. Description includes: 1) element's information: xml tag, name, brief description, data type and syntax constraints; 2) information about use of the element in a particular position in the document: xpath and possible associated notes.

2.2.1 Complex elements (Aggregate Business Information Entities)

Complex elements are those elements whose content is composed of other elements (childs).Complex elements are alphabetically ordered.

buyer	details of the Buyer - base type: Nad, (XPath: TEXDarnOrder/MOheader/buyer) 1-1
darnJobPrice	pricing of a darn work (XPath: TEXDarnOrder/MObody/MOitem/darnJobTicket/darnJobPrice) 0-2
darnJobTicket	job ticket for the execution of a darn work (XPath: TEXDarnOrder/MObody/MOitem/darnJobTicket) 0-9 - note: <i>here is the job order for the fabric pieces identified by its serial number (serialN)</i>
dtScheme	set of data usable to declare the duty or tax applied (XPath: TEXDarnOrder/MObody/MOitem/dtScheme) 0-1
MObody	body of the document TEXTILES DARN ORDER (XPath: TEXDarnOrder/MObody) 1-1
MOheader	header of the document TEXTILES DARN ORDER (XPath: TEXDarnOrder/MOheader) 1-1
MOitem	line item of the document TEXTILES DARN ORDER (XPath: TEXDarnOrder/MObody/MOitem) 1-unbounded
MOtotals	monetary and quantity totals of the Order (XPath: TEXDarnOrder/MOtots) 0-1
piece	Identification data and measurement of the fabric piece (XPath: TEXDarnOrder/MObody/MOitem/piece) 1-1
pieceChain	identification data and measurements of a chain of pieces still to be cut (XPath: TEXDarnOrder/MObody/MOitem/pieceChain) 1-1
pieceCut	identification data and measurements of a fabric piece belonging to a chain still to be cut (XPath: TEXDarnOrder/MObody/MOitem/pieceChain/pieceCut) 0-99 - note: <i>here the data of the pieces making up the chain should be specified</i>
pieceFault	classification, position and allowance of the piece faults. The reference point (0,0) for the position is the lower left corner of the piece (selvedge excluded) (XPath: TEXDarnOrder/MObody/MOitem/pieceMap/pieceFault) 0-99
pieceMap	mapping of the piece faults: type, rank and location (XPath: TEXDarnOrder/MObody/MOitem/pieceMap) 0-1

piecePack	type of wrapping or packing of the fabric pieces (XPath: TEXDarnOrder/MObody/MOitem/piece/piecePack) 0-1 (XPath: TEXDarnOrder/MObody/MOitem/pieceChain/piecePack) 0-1
refDoc	identification of a document and of an item thereof, to which the message makes reference (XPath: TEXDarnOrder/MOheader/refDoc) 0-9
subContractor	details of the Sub-contractor - base type: Nad, (XPath: TEXDarnOrder/MOheader/subContractor) 1-1
texCode	full codification of the textile product (XPath: TEXDarnOrder/MObody/MOitem/texCode) 0-1
thirdParty	details of the Third Party, different from Buyer or Supplier - base type: Nad, (XPath: TEXDarnOrder/MOheader/thirdParty) 0-1 - note: <i>it can be used to specify the Party to whom the subcontractor must send the goods (role="DM")</i>

2.2.2 Simple elements (Basic Business Information Entities)

Simple elements are those elements whose content is characterized by a data type plus a domain of possible values. Simple elements are alphabetically ordered.

added	additional code of the product (complementing the formers) - base type: string, max length: 15, (XPath: TEXDarnOrder/MObody/MOitem/texCode/added) 0-9 - note: <i>here an additional codification (see table T44) can be specified</i>
@addType	qualifier of the additional coding of a product - base type: string, cod. table: T44 http://www.moda-ml.net/moda-ml/repository/codelist/v2013-1/gc_T44.xml (XPath: TEXDarnOrder/MObody/MOitem/texCode/added/@addType) [Optional]
art	article number of the product - base type: string, max length: 25, (XPath: TEXDarnOrder/MObody/MOitem/texCode/art) 1-1 - note: <i>can be used either for the base-article (excluding pattern/colour) or for the SKU</i>
city	name of the city (town, village) - base type: string, max length: 40, (XPath: TEXDarnOrder/MOheader/thirdParty/city) 0-1 (XPath: TEXDarnOrder/MOheader/subContractor/city) 0-1 (XPath: TEXDarnOrder/MOheader/buyer/city) 0-1
@codeList	it specifies the URL where the list of codes used to make an instance of the element can be found - base type: string, max length: 255, (XPath: TEXDarnOrder/MObody/MOitem/dtScheme/note/@codeList) [Optional] - nota: <i>must be used to provide (URL) the list of codes used in "noteLabel"</i> (XPath: TEXDarnOrder/MObody/MOitem/texCode/art/@codeList) [Optional] - nota: <i>this attribute should be ALTERNATIVE to the others</i> (XPath: TEXDarnOrder/MOheader/note/@codeList) [Optional] - nota: <i>must be used to provide (URL) the list of codes used in "noteLabel"</i> (XPath: TEXDarnOrder/MObody/MOitem/texCode/pattern/@codeList) [Optional]

	<p>- nota: <i>this attribute should be ALTERNATIVE to the others</i> (XPath: TEXDarnOrder/MObody/MOitem/texCode/color/@codeList) [Optional]</p> <p>- nota: <i>this attribute should be ALTERNATIVE to the others</i> (XPath: TEXDarnOrder/MObody/MOitem/dtScheme/legalRef/@codeList) [Required]</p> <p>(XPath: TEXDarnOrder/MObody/MOitem/pieceMap/pieceFault/note/@codeList) [Optional]</p> <p>- nota: <i>must be used to provide (URL) the list of codes used in "noteLabel"</i> (XPath: TEXDarnOrder/MObody/MOitem/note/@codeList) [Optional]</p> <p>- nota: <i>must be used to provide (URL) the list of codes used in "noteLabel"</i></p>
color	<p>colour number of the product, when not included in the model or fabric code</p> <p>- base type: string, max length: 15, (XPath: TEXDarnOrder/MObody/MOitem/texCode/color) 0-1</p>
country	<p>code of the nation</p> <p>- base type: string, cod. table: T10 http://www.moda-ml.net/moda-ml/repository/codelist/v2013-1/gc_T10.xml (XPath: TEXDarnOrder/MOheader/subContractor/country) 0-1 (XPath: TEXDarnOrder/MOheader/buyer/country) 0-1 (XPath: TEXDarnOrder/MOheader/thirdParty/country) 0-1</p>
@dateForm	<p>format used for the date</p> <p>- base type: string, cod. table: NT29 http://www.moda-ml.net/moda-ml/repository/codelist/v2013-1/gc_NT29.xml (XPath: TEXDarnOrder/MOheader/refDoc/docDate/@dateForm) [Optional] (XPath: TEXDarnOrder/MObody/MOitem/deliveryDate/@dateForm) [Optional] (XPath: TEXDarnOrder/MOheader/msgDate/@dateForm) [Optional]</p>
deliveryDate	<p>date of delivery of goods, requested or promised in the purchase process, according to one of the patterns YYYY-MM-DD, YYYY-MM-DD:HH-MM or YYYY-WW.</p> <p>- base type: string, (XPath: TEXDarnOrder/MObody/MOitem/deliveryDate) 0-1</p>
dept	<p>name or code of a contact department within a Party</p> <p>- base type: string, max length: 40, (XPath: TEXDarnOrder/MOheader/buyer/dept) 0-1 (XPath: TEXDarnOrder/MOheader/subContractor/dept) 0-1 (XPath: TEXDarnOrder/MOheader/thirdParty/dept) 0-1</p>
description	<p>free text description of a product</p> <p>- base type: string, max length: 70, (XPath: TEXDarnOrder/MObody/MOitem/texCode/description) 0-1</p>
docDate	<p>date of issue of the referenced document, according to one of the patterns YYYY-MM-DD, YYYY-MM-DD:HH-MM or YYYY-WW.</p> <p>- base type: string, (XPath: TEXDarnOrder/MOheader/refDoc/docDate) 0-1</p>
docID	<p>identification number of the referenced document SINCE 2008-1 ITS USE IN THE HEADER IS DISCOURAGED (REPLACED BY msgID)</p> <p>- base type: string, max length: 80, (XPath: TEXDarnOrder/MOheader/docID) 0-1 (XPath: TEXDarnOrder/MOheader/refDoc/docID) 1-2</p>
@docType	<p>type or class to which the referenced document belongs</p> <p>- base type: string, cod. table: T21 http://www.moda-ml.net/moda-ml/repository/codelist/v2013-1/gc_T21.xml (XPath: TEXDarnOrder/MOheader/refDoc/@docType) [Required]</p>
dyeN	<p>number of the dying batch of a textile product</p> <p>- base type: string, max length: 15, (XPath: TEXDarnOrder/MObody/MOitem/piece/dyeN) 0-1</p>

	(XPath: TEXDarnOrder/MObody/MOitem/pieceChain/dyeN) 0-1
@email	electronic mail address of the contact person within a Party - base type: string, max length: 80, (XPath: TEXDarnOrder/MOheader/subContractor/person/@email) [Optional] (XPath: TEXDarnOrder/MOheader/thirdParty/person/@email) [Optional] (XPath: TEXDarnOrder/MOheader/buyer/person/@email) [Optional]
@endUse	specifies the final use of the fabric - base type: string, cod. table: NT4 http://www.moda-ml.net/moda-ml/repository/codelist/v2013-1/gc_NT4.xml (XPath: TEXDarnOrder/MObody/MOitem/piece/@endUse) [Optional]
EPC	identifier used for tracing a physical item with RFID technology - base type: string, (XPath: TEXDarnOrder/MObody/MOitem/piece/EPC) 0-1
fabricFault	code specifying the type or class of fabric fault - base type: string, cod. table: T12 http://www.moda-ml.net/moda-ml/repository/codelist/v2013-1/gc_T12.xml (XPath: TEXDarnOrder/MObody/MOitem/pieceMap/pieceFault/fabricFault) 1-1 - note: <i>here the MODA-ML codelist must be used.</i>
fabricFaultText	free text describing the type or class of the fabric fault - base type: string, max length: 40, (XPath: TEXDarnOrder/MObody/MOitem/pieceMap/pieceFault/fabricFaultText) 1-1 - note: <i>here the text or proprietary code mutually agreed must be used</i>
@faultRank	ranking class of the fabric fault - base type: string, cod. table: NT13 http://www.moda-ml.net/moda-ml/repository/codelist/v2013-1/gc_NT13.xml (XPath: TEXDarnOrder/MObody/MOitem/pieceMap/pieceFault/@faultRank) [Required]
@faultShape	shape classification of the fabric fault - base type: string, cod. table: NT14 http://www.moda-ml.net/moda-ml/repository/codelist/v2013-1/gc_NT14.xml (XPath: TEXDarnOrder/MObody/MOitem/pieceMap/pieceFault/@faultShape) [Optional]
@fax	fax number of the contact person within a Party - base type: string, max length: 35, (XPath: TEXDarnOrder/MOheader/subContractor/person/@fax) [Optional] (XPath: TEXDarnOrder/MOheader/buyer/person/@fax) [Optional] (XPath: TEXDarnOrder/MOheader/thirdParty/person/@fax) [Optional]
id	primary identification code of a Party; it is recommended the format: nation code (ISO 3166) + VAT identification number (11 crt), with the qualifier "numberingOrg"= MF - base type: string, max length: 15, (XPath: TEXDarnOrder/MOheader/thirdParty/id) 1-1 (XPath: TEXDarnOrder/MOheader/buyer/id) 1-1 (XPath: TEXDarnOrder/MOheader/subContractor/id) 1-1
itemID	number of the line/item of the referenced document - base type: string, max length: 6, (XPath: TEXDarnOrder/MOheader/refDoc/itemID) 0-1
job	element of a work cycle - base type: string, cod. table: T20 http://www.moda-ml.net/moda-ml/repository/codelist/v2013-1/gc_T20.xml (XPath: TEXDarnOrder/MObody/MOitem/darnJobTicket/job) 1-1
jobPrice	price of a hired job operation - base type: decimal, min inclusive: 0, fraction digits: 4, (XPath: TEXDarnOrder/MObody/MOitem/darnJobTicket/darnJobPrice/jobPrice) 0-1

jobTime	worktime of the elementary operation of a work cycle in hours and minutes (nnnHnnM) - base type: duration, (XPath: TEXDarnOrder/MObody/MOitem/darnJobTicket/jobTime) 0-1
jobTimeBasis	reference basis for the time of an operation (e.g.: 1 metre, 50 metres, 30 kilos, etc...) - base type: positiveInteger, min inclusive: 1, (XPath: TEXDarnOrder/MObody/MOitem/darnJobTicket/jobTimeBasis) 0-1 - note: <i>this element must not be used when the time (jobTime) is a forfeit</i>
legalName	legal name of a Party - base type: string, max length: 80, (XPath: TEXDarnOrder/MOheader/thirdParty/legalName) 0-1 (XPath: TEXDarnOrder/MOheader/subContractor/legalName) 0-1 (XPath: TEXDarnOrder/MOheader/buyer/legalName) 0-1
legalRef	legal reference of the duty or tax or fee category - base type: string, (XPath: TEXDarnOrder/MObody/MOitem/dtScheme/legalRef) 0-1
lineN	number of the line item of the present message (xml document) - base type: positiveInteger, min inclusive: 1, max inclusive: 9999, (XPath: TEXDarnOrder/MObody/MOitem/lineN) 1-1
@listName	it specifies the name of the list of codes used to make an instance of the element - base type: string, max length: 40, (XPath: TEXDarnOrder/MObody/MOitem/texCode/pattern/@listName) [Optional] - nota: <i>this attribute should always be used coupled with "numberingOrg"</i> (XPath: TEXDarnOrder/MObody/MOitem/texCode/art/@listName) [Optional] - nota: <i>this attribute should always be used coupled with "numberingOrg"</i> (XPath: TEXDarnOrder/MObody/MOitem/texCode/color/@listName) [Optional] - nota: <i>this attribute should always be used coupled with "numberingOrg"</i>
@listVersion	it specifies the version of the list of codes used to make an instance of the element - base type: string, max length: 6, (XPath: TEXDarnOrder/MObody/MOitem/texCode/art/@listVersion) [Optional] - nota: <i>this attribute should always be used coupled with "numberingOrg" and "listName"</i> (XPath: TEXDarnOrder/MObody/MOitem/texCode/color/@listVersion) [Optional] - nota: <i>this attribute should always be used coupled with "numberingOrg" and "listName"</i> (XPath: TEXDarnOrder/MObody/MOitem/texCode/pattern/@listVersion) [Optional] - nota: <i>this attribute should always be used coupled with "numberingOrg" and "listName"</i>
@logo	company logo (URL of the image jpeg or gif). It is recommended that the width of the image does not exceed 640 pixel. - base type: string, max length: 255, (XPath: TEXDarnOrder/MOheader/buyer/@logo) [Optional]
lotN	lot number of a product or batch number of the raw material - base type: string, max length: 15, (XPath: TEXDarnOrder/MObody/MOitem/pieceChain/lotN) 0-1 (XPath: TEXDarnOrder/MObody/MOitem/piece/lotN) 0-1

mixMatch	<p>colour hue used for the match of garments</p> <ul style="list-style-type: none"> - base type: string, max length: 15, <p>(XPath: TEXDarnOrder/MObody/MOitem/piece/mixMatch) 0-1</p>
msgDate	<p>date of issue of the present message (xml document), according to one of the patterns YYYY-MM-DD, YYYY-MM-DD:HH-MM or YYYY-WW.</p> <ul style="list-style-type: none"> - base type: string, <p>(XPath: TEXDarnOrder/MOheader/msgDate) 1-1</p>
@msgfunction	<p>function performed by the present message with regards to the transmission</p> <ul style="list-style-type: none"> - base type: string, cod. table: NT18 <p>http://www.moda-ml.net/moda-ml/repository/codelist/v2013-1/gc_NT18.xml</p> <p>(XPath: TEXDarnOrder/@msgfunction) [Optional] [Default= OR]</p>
msgID	<p>key identifier of the document in the information system of the issuing Party</p> <ul style="list-style-type: none"> - base type: string, max length: 35, <p>(XPath: TEXDarnOrder/MOheader/msgID) 0-1</p>
msgN	<p>identification number given to the message (xml document) by its issuer</p> <ul style="list-style-type: none"> - base type: string, max length: 35, <p>(XPath: TEXDarnOrder/MOheader/msgN) 1-1</p>
note	<p>free text or structured (computer processing) note. For note structuring use the attributes "noteLabel" and "codelist"</p> <ul style="list-style-type: none"> - base type: string, max length: 350, <p>(XPath: TEXDarnOrder/MObody/MOitem/note) 0-19 (XPath: TEXDarnOrder/MObody/MOitem/pieceMap/pieceFault/note) 0-19 (XPath: TEXDarnOrder/MOheader/note) 0-19 (XPath: TEXDarnOrder/MObody/MOitem/dtScheme/note) 0-19</p>
@noteLabel	<p>subject qualifier of a note</p> <ul style="list-style-type: none"> - base type: string, max length: 35, <p>(XPath: TEXDarnOrder/MObody/MOitem/pieceMap/pieceFault/note/@noteLabel) [Optional]</p> <ul style="list-style-type: none"> - nota: <i>must be used to qualify the subject of the note</i> <p>(XPath: TEXDarnOrder/MObody/MOitem/dtScheme/note/@noteLabel) [Optional]</p> <ul style="list-style-type: none"> - nota: <i>must be used to qualify the subject of the note</i> <p>(XPath: TEXDarnOrder/MOheader/note/@noteLabel) [Optional]</p> <ul style="list-style-type: none"> - nota: <i>must be used to qualify the subject of the note</i> <p>(XPath: TEXDarnOrder/MObody/MOitem/note/@noteLabel) [Optional]</p> <ul style="list-style-type: none"> - nota: <i>must be used to qualify the subject of the note</i>
@numberingOrg	<p>code specifying the organisation who has created or owns the coding or numbering system</p> <ul style="list-style-type: none"> - base type: string, cod. table: NT6 <p>http://www.moda-ml.net/moda-ml/repository/codelist/v2013-1/gc_NT6.xml</p> <p>(XPath: TEXDarnOrder/MObody/MOitem/note/@numberingOrg) [Optional] (XPath: TEXDarnOrder/MObody/MOitem/piece/dyeN/@numberingOrg) [Optional] (XPath: TEXDarnOrder/MObody/MOitem/pieceChain/packageN/@numberingOrg) [Optional] (XPath: TEXDarnOrder/MOheader/buyer/id/@numberingOrg) [Optional] (XPath: TEXDarnOrder/MObody/MOitem/piece/lotN/@numberingOrg) [Optional] (XPath: TEXDarnOrder/MOheader/docID/@numberingOrg) [Optional]</p> <ul style="list-style-type: none"> - nota: <i>here can be specified whose document numbering is used (e.g.: Client, Supplier, ..)</i> <p>(XPath: TEXDarnOrder/MObody/MOitem/piece/EPC/@numberingOrg) [Optional] (XPath: TEXDarnOrder/MObody/MOitem/piece/serialN/@numberingOrg) [Optional]</p>

	<p>- nota: here the issuer of the serial number must be specified (when different from the Supplier) (XPath: TEXDarnOrder/MObody/MOitem/piece/packageN/@numberingOrg) [Optional] (XPath: TEXDarnOrder/MObody/MOitem/pieceChain/pieceCut/serialN/@numberingOrg) [Optional]</p> <p>- nota: here the issuer of the serial number must be specified (when different from the Supplier) (XPath: TEXDarnOrder/MObody/MOitem/piece/mixMatch/@numberingOrg) [Optional] (XPath: TEXDarnOrder/MOheader/refDoc/docID/@numberingOrg) [Optional]</p> <p>- nota: here can be specified whose document numbering is used (e.g.: Client, Supplier, ..) (XPath: TEXDarnOrder/MObody/MOitem/pieceChain/dyeN/@numberingOrg) [Optional] (XPath: TEXDarnOrder/MObody/MOitem/texCode/added/@numberingOrg) [Optional] (XPath: TEXDarnOrder/MObody/MOitem/texCode/color/@numberingOrg) [Optional]</p> <p>- nota: this attribute should be used either single or coupled with "listName" and "listVersion" (XPath: TEXDarnOrder/MOheader/subContractor/id/@numberingOrg) [Optional] (XPath: TEXDarnOrder/MObody/MOitem/pieceChain/serialN/@numberingOrg) [Optional]</p> <p>- nota: here the issuer of the serial number must be specified (when different from the Supplier) (XPath: TEXDarnOrder/MObody/MOitem/dtScheme/note/@numberingOrg) [Optional] (XPath: TEXDarnOrder/MObody/MOitem/texCode/@numberingOrg) [Optional] (XPath: TEXDarnOrder/MOheader/note/@numberingOrg) [Optional] (XPath: TEXDarnOrder/MObody/MOitem/texCode/art/@numberingOrg) [Optional]</p> <p>- nota: this attribute should be used either single or coupled with "listName" and "listVersion" (XPath: TEXDarnOrder/MOheader/thirdParty/id/@numberingOrg) [Optional] (XPath: TEXDarnOrder/MObody/MOitem/texCode/pattern/@numberingOrg) [Optional]</p> <p>- nota: this attribute should be used either single or coupled with "listName" and "listVersion" (XPath: TEXDarnOrder/MObody/MOitem/pieceMap/pieceFault/note/@numberingOrg) [Optional] (XPath: TEXDarnOrder/MObody/MOitem/pieceChain/lotN/@numberingOrg) [Optional]</p>
@packageContainerN	<p>reference usable to indicate the outer package containing this package</p> <p>- base type: string, max length: 25, (XPath: TEXDarnOrder/MObody/MOitem/piece/packageN/@packageContainerN) [Optional] (XPath: TEXDarnOrder/MObody/MOitem/pieceChain/packageN/@packageContainerN) [Optional]</p>
packageN	<p>serial number used to identify a transport package</p> <p>- base type: string, max length: 25, (XPath: TEXDarnOrder/MObody/MOitem/pieceChain/packageN) 0-1 (XPath: TEXDarnOrder/MObody/MOitem/piece/packageN) 0-1</p> <p>- note: here the transport package containing the piece can be identified</p>
pattern	<p>pattern/design number of the product, when not included in the article code</p> <p>- base type: string, max length: 15, (XPath: TEXDarnOrder/MObody/MOitem/texCode/pattern) 0-1</p>

person	name of the contact person within a Party - base type: string, max length: 40, (XPath: TEXDarnOrder/MOheader/subContractor/person) 0-1 (XPath: TEXDarnOrder/MOheader/thirdParty/person) 0-1 (XPath: TEXDarnOrder/MOheader/buyer/person) 0-1
@phone	phone number of the contact person within a Party - base type: string, max length: 35, (XPath: TEXDarnOrder/MOheader/thirdParty/person/@phone) [Optional] (XPath: TEXDarnOrder/MOheader/buyer/person/@phone) [Optional] (XPath: TEXDarnOrder/MOheader/subContractor/person/@phone) [Optional]
pieceAllow	allowance required or accorded for the piece - base type: decimal, fraction digits: 2, (XPath: TEXDarnOrder/MObody/MOitem/piece/pieceAllow) 0-1 (XPath: TEXDarnOrder/MObody/MOitem/pieceMap/pieceFault/pieceAllow) 0-1 - note: <i>this is the allowance estimated for the fault by the same "source" responsible for the other measurements</i>
pieceCutWidth	effective usable width of the fabric piece (for garment manufacturing) - base type: decimal, min inclusive: 0, fraction digits: 2, (XPath: TEXDarnOrder/MObody/MOitem/piece/pieceCutWidth) 0-1
pieceInnWrap1	code specifying the type of inner wrapping/packing used for the fabric piece - base type: string, cod. table: T4 http://www.moda-ml.net/moda-ml/repository/codelist/v2013-1/gc_T4.xml (XPath: TEXDarnOrder/MObody/MOitem/pieceChain/piecePack/pieceInnWrap1) 1-1 (XPath: TEXDarnOrder/MObody/MOitem/piece/piecePack/pieceInnWrap1) 1-1
pieceInnWrap2	code sub-specifying the type of inner wrapping/packing used for the fabric piece - base type: string, cod. table: T5 http://www.moda-ml.net/moda-ml/repository/codelist/v2013-1/gc_T5.xml (XPath: TEXDarnOrder/MObody/MOitem/pieceChain/piecePack/pieceInnWrap2) 0-1 (XPath: TEXDarnOrder/MObody/MOitem/piece/piecePack/pieceInnWrap2) 0-1
pieceLength	length of the piece - base type: decimal, min inclusive: 0, fraction digits: 2, (XPath: TEXDarnOrder/MObody/MOitem/piece/pieceLength) 0-1 (XPath: TEXDarnOrder/MObody/MOitem/pieceChain/pieceLength) 0-1 (XPath: TEXDarnOrder/MObody/MOitem/pieceChain/pieceCut/pieceLength) 0-1
pieceOutWrap	code specifying the type of outer wrapping or packing used for the fabric piece - base type: string, cod. table: T6 http://www.moda-ml.net/moda-ml/repository/codelist/v2013-1/gc_T6.xml (XPath: TEXDarnOrder/MObody/MOitem/pieceChain/piecePack/pieceOutWrap) 0-1 (XPath: TEXDarnOrder/MObody/MOitem/piece/piecePack/pieceOutWrap) 0-1
piecePackText	free text specifying the type of wrapping or packing used for the fabric piece - base type: string, max length: 40, (XPath: TEXDarnOrder/MObody/MOitem/pieceChain/piecePack/piecePackText) 1-1 (XPath: TEXDarnOrder/MObody/MOitem/piece/piecePack/piecePackText) 1-1
pieceStatus	code used to describe the status of a fabric piece after the control - base type: string, cod. table: T52 http://www.moda-ml.net/moda-ml/repository/codelist/v2013-1/gc_T52.xml (XPath: TEXDarnOrder/MObody/MOitem/piece/pieceStatus) 0-1
pieceWeight	effective total weight of the fabric piece

	<p>- base type: decimal, min inclusive: 0, fraction digits: 2, (XPath: TEXDarnOrder/MObody/MOitem/pieceChain/pieceCut/pieceWeight) 0-1 (XPath: TEXDarnOrder/MObody/MOitem/pieceChain/pieceWeight) 0-1 (XPath: TEXDarnOrder/MObody/MOitem/piece/pieceWeight) 0-1</p>
pieceWeightM	<p>effective weight per metre of the fabric piece - base type: decimal, min inclusive: 0, fraction digits: 2, (XPath: TEXDarnOrder/MObody/MOitem/piece/pieceWeightM) 0-1</p>
pieceWidth	<p>effective width of the fabric piece - base type: decimal, min inclusive: 0, fraction digits: 2, (XPath: TEXDarnOrder/MObody/MOitem/piece/pieceWidth) 0-1 (XPath: TEXDarnOrder/MObody/MOitem/pieceChain/pieceWidth) 0-1</p>
postCode	<p>code defining the postal zone - base type: string, max length: 10, (XPath: TEXDarnOrder/MOheader/thirdParty/postCode) 0-1 (XPath: TEXDarnOrder/MOheader/subContractor/postCode) 0-1 (XPath: TEXDarnOrder/MOheader/buyer/postCode) 0-1</p>
priceBasis	<p>reference basis for the price (e.g.: 1 metre, 1 hour, 1 minute, etc...) - base type: positiveInteger, min inclusive: 1, (XPath: TEXDarnOrder/MObody/MOitem/darnJobTicket/ darnJobPrice/priceBasis) 0-1 - note: <i>this element must not be used when the price (jobPrice) is a forfeit</i></p>
qty	<p>net quantity of the article or object correlated, qualified by the function of the document (ordering, delivering, ..) and by the context - base type: decimal, min inclusive: 0, fraction digits: 2, (XPath: TEXDarnOrder/MObody/MOitem/qty) 1-1 - note: <i>here is the total quantity to be darned</i></p>
@role	<p>Third Party role qualifier - base type: string, cod. table: NT2 http://www.moda-ml.net/moda-ml/repository/codelist/v2013-1/gc_NT2.xml (XPath: TEXDarnOrder/MOheader/thirdParty/@role) [Required]</p>
season	<p>sale season; defined as: season (1 crt) + year (4 crt) - season: S/S=1 A/W=2 Spring=3 Summer=4 Autumn=5 Winter=6: for more than four seasons use alphabetic sequence: 1st season=A 2nd season=B etc.etc. - base type: string, max length: 15, (XPath: TEXDarnOrder/MOheader/refDoc/season) 0-1 - note: <i>here indicates the season to which the referenced document belongs</i></p>
@sender	<p>qualifier that specifies the Party issuing of the document - base type: boolean, (XPath: TEXDarnOrder/MOheader/buyer/@sender) [Optional] - nota: <i>This attribute is mandatory when the STYLESHEET must be produced</i> (XPath: TEXDarnOrder/MOheader/thirdParty/@sender) [Optional] - nota: <i>This attribute is mandatory when the STYLESHEET must be produced</i> (XPath: TEXDarnOrder/MOheader/subContractor/@sender) [Optional] - nota: <i>This attribute is mandatory when the STYLESHEET must be produced</i></p>
serialN	<p>serial number used for the identification of a physical unit - base type: string, max length: 15, (XPath: TEXDarnOrder/MObody/MOitem/pieceChain/pieceCut/serialN) 1-1 (XPath: TEXDarnOrder/MObody/MOitem/pieceChain/serialN) 1-1 (XPath: TEXDarnOrder/MObody/MOitem/piece/serialN) 1-3</p>

@source	party who has provided the data - base type: string, cod. table: NT12 http://www.moda-ml.net/moda-ml/repository/codelist/v2013-1/gc_NT12.xml (XPath: TEXDarnOrder/MObody/MOitem/pieceMap/@source) [Required]
street	street and building number identifying a location - base type: string, max length: 80, (XPath: TEXDarnOrder/MOheader/buyer/street) 0-1 (XPath: TEXDarnOrder/MOheader/subContractor/street) 0-1 (XPath: TEXDarnOrder/MOheader/thirdParty/street) 0-1
subCountry	short name or code of the sub-country entity - base type: string, max length: 9, (XPath: TEXDarnOrder/MOheader/thirdParty/subCountry) 0-1 (XPath: TEXDarnOrder/MOheader/subContractor/subCountry) 0-1 (XPath: TEXDarnOrder/MOheader/buyer/subCountry) 0-1
taxCategory	duty or tax or fee category - base type: string, cod. table: T62 http://www.moda-ml.net/moda-ml/repository/codelist/v2013-1/gc_T62.xml (XPath: TEXDarnOrder/MObody/MOitem/dtScheme/taxCategory) 0-1
taxRate	duty or tax or fee percent rate - base type: string, (XPath: TEXDarnOrder/MObody/MOitem/dtScheme/taxRate) 0-1
@taxType	duty or tax or fee type - base type: string, cod. table: T61 http://www.moda-ml.net/moda-ml/repository/codelist/v2013-1/gc_T61.xml (XPath: TEXDarnOrder/MObody/MOitem/dtScheme/@taxType) [Required]
@TID	serial number wired into the RFID chip - base type: string, (XPath: TEXDarnOrder/MObody/MOitem/piece/EPC/@TID) [Optional]
totFault	total number of faults: the 1st/2nd digit count the "Large faults", the 3rd/4th the "Medium faults" and the 5th/6th the "Small faults" - base type: positiveInteger, (XPath: TEXDarnOrder/MObody/MOitem/piece/totFault) 0-1 (XPath: TEXDarnOrder/MObody/MOitem/pieceMap/totFault) 1-1
totQty	total quantity of the articles related to the whole document - base type: decimal, min inclusive: 0, fraction digits: 2, (XPath: TEXDarnOrder/MOtots/totQty) 2-2 - note: <i>used to specify the number of pieces (um="PZ") and the quantity of metres (um="MTR") relative to the document</i>
@transReason	reason for the transport - base type: string, cod. table: NT11 http://www.moda-ml.net/moda-ml/repository/codelist/v2013-1/gc_NT11.xml (XPath: TEXDarnOrder/MObody/MOitem/@transReason) [Optional]
@um	specification of the unit of measure - base type: string, cod. table: NT7 http://www.moda-ml.net/moda-ml/repository/codelist/v2013-1/gc_NT7.xml (XPath: TEXDarnOrder/MObody/MOitem/pieceMap/pieceFault/warpStart/@um) [Optional] [Default= MTR] (XPath: TEXDarnOrder/MObody/MOitem/piece/pieceWidth/@um) [Optional] [Default= CMT] (XPath: TEXDarnOrder/MObody/MOitem/piece/pieceCutWidth/@um) [Optional] [Default= CMT] (XPath: TEXDarnOrder/MObody/MOitem/pieceMap/pieceFault/weftStart/@um) [Optional] [Default= CMT] (XPath: TEXDarnOrder/MObody/MOitem/pieceMap/pieceFault/warpEnd/@um) [Optional] [Default= MTR] (XPath: TEXDarnOrder/MObody/MOitem/piece/pieceWeightM/@um) [Optional] [Default= GRM] (XPath: TEXDarnOrder/MObody/MOitem/pieceChain/pieceCut/

	<p>pieceWeight/@um) [Optional] [Default= KGM] (XPath: TEXDarnOrder/MOtals/totQty/@um) [Required] (XPath: TEXDarnOrder/MObody/MOitem/piece/pieceWeight/@um) [Optional] [Default= KGM] (XPath: TEXDarnOrder/MObody/MOitem/pieceChain/pieceWeight/@um) [Optional] [Default= KGM] (XPath: TEXDarnOrder/MObody/MOitem/pieceChain/pieceCut/pieceLength/@um) [Optional] [Default= MTR] (XPath: TEXDarnOrder/MObody/MOitem/darnJobTicket/jobTimeBasis/@um) [Required] (XPath: TEXDarnOrder/MObody/MOitem/pieceMap/pieceFault/pieceAllow/@um) [Required] (XPath: TEXDarnOrder/MObody/MOitem/pieceChain/pieceWidth/@um) [Optional] [Default= CMT] (XPath: TEXDarnOrder/MObody/MOitem/qty/@um) [Required] (XPath: TEXDarnOrder/MObody/MOitem/pieceChain/pieceLength/@um) [Optional] [Default= MTR] (XPath: TEXDarnOrder/MObody/MOitem/piece/pieceAllow/@um) [Required] (XPath: TEXDarnOrder/MObody/MOitem/piece/pieceLength/@um) [Optional] [Default= MTR] (XPath: TEXDarnOrder/MObody/MOitem/darnJobTicket/darnJobPrice/priceBasis/@um) [Required] (XPath: TEXDarnOrder/MObody/MOitem/pieceMap/pieceFault/weftEnd/@um) [Optional] [Default= CMT]</p>
@useProfile	<p>use profile to which the present document is compliant if it was agreed by the parties. It is suggested a URI with reference to the firms or the URL of the profile. - base type: string, (XPath: TEXDarnOrder/@useProfile) [Optional]</p>
@VAT	<p>VAT rate or code (deprecated, use dtScheme element) - base type: string, cod. table: NT16 http://www.moda-ml.net/moda-ml/repository/codelist/v2013-1/gc_NT16.xml (XPath: TEXDarnOrder/MObody/MOitem/lineN/@VAT) [Optional] (XPath: TEXDarnOrder/MOheader/thirdParty/@VAT) [Optional]</p>
@version	<p>Dictionary version from which the instance has been created - base type: string, cod. table: NT100 http://www.moda-ml.net/moda-ml/repository/codelist/v2013-1/gc_NT100.xml (XPath: TEXDarnOrder/@version) [Optional] [Default= 2013-1]</p>
warpEnd	<p>end point of the fabric fault in the warp direction - base type: decimal, min inclusive: 0, fraction digits: 2, (XPath: TEXDarnOrder/MObody/MOitem/pieceMap/pieceFault/warpEnd) 0-1</p>
warpStart	<p>start point of the fabric fault in the warp direction - base type: decimal, min inclusive: 0, fraction digits: 2, (XPath: TEXDarnOrder/MObody/MOitem/pieceMap/pieceFault/warpStart) 1-1</p>
weftEnd	<p>end point of the fabric fault in the weft direction - base type: decimal, min inclusive: 0, fraction digits: 2, (XPath: TEXDarnOrder/MObody/MOitem/pieceMap/pieceFault/weftEnd) 0-1</p>
weftStart	<p>start point of the fabric fault in the weft direction - base type: decimal, min inclusive: 0, fraction digits: 2, (XPath: TEXDarnOrder/MObody/MOitem/pieceMap/pieceFault/weftStart) 0-1</p>

2.3 Enumeration tables

List of enumeration tables used in the XML document. You can find the corresponding codes at: <http://www.moda-ml.org/moda-ml/imple/moda-ml-2013-1.asp?lingua=en&pag=6>

NT100 - eBIZ Moda-ML version
NT11 - transport causal
NT12 - data source
NT13 - fabric fault category
NT14 - fabric fault shape
NT16 - VAT rate or code
NT18 - message function
NT2 - third party qualifier
NT29 - format of a date
NT4 - end use
NT6 - coding system owner/issuer
NT7 - unity of measure
T10 - ISO3166 - Country
T12 - fabric faults
T20 - type of darning operation
T21 - type of document
T4 - fabric piece inner packing (wrapping) 1
T44 - additional code type
T5 - fabric piece inner packing (wrapping) 2
T52 - fabric piece status
T6 - fabric piece outer packing
T61 - duty or tax or fee type
T62 - duty or tax or fee category

Annex A

Representative images of the principal complex elements' structure.

