



<http://www.moda-ml.org>

IMPLEMENTATION GUIDE TRANSACTION "YARN DESPATCH ADVICE"

Version: 2013-1

Date of release: 18/11/2011

Document code: G016

XML Schema repository:<http://www.moda-ml.org/moda-ml/repository/schema/v2013-1/default.asp>

Guides repository:<http://www.moda-ml.org/moda-ml/repository/guide/v2013-1/default.asp>

Guide filename: G016-MODA-ML-YarnDespatchAdvice.pdf

1. BUSINESS DESCRIPTION

1.1 Scope

The present guide has been issued to assist the companies of the Textile-Clothing sector in the implementation of the standard XML document type "YARN DESPATCH ADVISE", providing all the instruction required for its use in any context of e-commerce between Yarn Producers (or Subcontractors) and their Clients.

All the rules required for the construction and validation of the document are embedded into the specific XML-Schema, which is detailed in section "Implementation guide".

1.2 Generalities

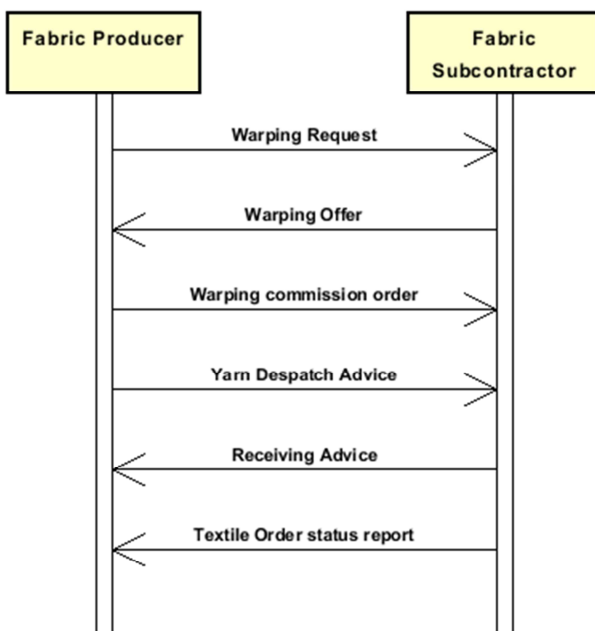
The message is issued to anticipate the details the articles actually despatched. The same message can be used with the client for sale and with the subcontractor for working operation (eg. dyeing).

This document can be used:

- as a standard despatch advice
- as a pre-despatch notification of the goods that are to be despatched.

Each document item must correspond with a well defined fabric article (article + color); for each item is possible to reference the Order line that is delivered.

1.3. Possible scenario



2. IMPLEMENTATION GUIDE

2.1 General structure of XML document

All the business data that can be exchanged through this class of documents are shown in the following "document structure", that provides a simplified vision of the Schema.

In particular:

- the two numbers following each element define its "cardinality" (minimum and maximum number of occurrences); the minimum equal zero indicates that the element is optional, the minimum greater than zero indicates that is mandatory;
- the bold character denotes the complex elements (aggregates of simple elements) that were built for the sake of functionality and re-usability of some complex informations sets. The child elements in each parent element are easily spotted as "indented";
- the symbol "@" denotes an attribute of the preceding element; here "the usage indicator (optional, required, ...)" is shown in square brackets.

Structure

YARNDesAdvise

@TAtype [Optional] [Default= STD]

@msgfunction [Optional] [Default= OR]

@version [Optional] [Default= 2013-1]

@useProfile [Optional]

| **THeader 1-1**

| | msgN 1-1

| | - choose -

| | msgID 0-1

| | - or -

| | docID 0-1

| | @numberingOrg [Optional]

| | - end choose -

| | msgDate 1-1

| | @dateForm [Optional]

| | **refDoc 0-9**

| | @docType [Required]

| | | docID 1-2

| | | @numberingOrg [Optional]

| | | docDate 0-1

| | | @dateForm [Optional]

| | | season 0-1

| | | itemID 0-1

| | **buyer 1-1**

| | @logo [Optional]

| | @sender [Optional]

| | | id 1-1

| | | @numberingOrg [Optional]

| | | legalName 0-1

| | | dept 0-1

| | | person 0-1

| | | @email [Optional]

| | | @phone [Optional]

| | | @fax [Optional]

| | | street 0-1

| | | city 0-1

| | | subCountry 0-1

| | | country 0-1

| | | postCode 0-1

supplier 1-1

@logo [Optional]
@sender [Optional]
id 1-1
@numberingOrg [Optional]
legalName 0-1
dept 0-1
person 0-1
@email [Optional]
@phone [Optional]
@fax [Optional]
street 0-1
city 0-1
subCountry 0-1
country 0-1
postCode 0-1

thirdParty 0-5

@VAT [Optional]
@role [Required]
@sender [Optional]
id 1-1
@numberingOrg [Optional]
legalName 0-1
dept 0-1
person 0-1
@email [Optional]
@phone [Optional]
@fax [Optional]
street 0-1
city 0-1
subCountry 0-1
country 0-1
postCode 0-1
note 0-19
@numberingOrg [Optional]
@codeList [Optional]
@noteLabel [Optional]

trade 0-1

- choose -
| incoTermText 1-1
- or -
| incoTerm 1-1
- end choose -
| location 0-1
| *@LRI [Optional]*

shipInfo 0-1

transInfo 0-5

@transReason [Optional]
transMode 1-1
carrier 0-1
deliveryPlace 0-1
grossWeight 0-1
@um [Required]
netWeight 0-1
@um [Required]
transMeans 0-1
transCondition 0-3
transConditionText 0-1
delEffectiveDate 0-1

```

| | @dateForm [Optional]
| | packages 0-99
| | @packageLevel [Optional]
| | - choose -
| | | packageText 1-1
| | | - or -
| | | package 1-1
| | | - end choose -
| | | packageDim 0-1
| | | | length 1-1
| | | | @um [Required]
| | | | width 0-1
| | | | @um [Required]
| | | | height 0-1
| | | | @um [Required]
| | | packageQty 0-1
| | | packageN 0-unbounded
| | | @numberingOrg [Optional]
| | | @packageContainerN [Optional]
| | | EPCList 0-1
| | | | EPC 1-unbounded
| | | | @numberingOrg [Optional]
| | | | @TID [Optional]

```

```

| yarnPack 0-1
| | yarnReel 1-1
| | | @reelType [Required]
| | | @reelMat [Optional]
| | | | yarnReelID 0-1
| | | | @um [Required]
| | | | yarnReelH 0-1
| | | | @um [Required]
| | | | yarnConeAngle 0-1
| | | | yarnReelQty 0-2
| | | | @um [Required]
| | | | label 0-1
| | | | labelWrit 0-1
| | | yarnInWrap 0-1
| | | | yarnReelWrap 1-1
| | | | label 0-1
| | | | labelWrit 0-1
| | | - choose -
| | | | yarnOutWrapText 0-1
| | | | - or -
| | | | yarnOutWrap 0-1
| | | - end choose -

```

```

| YAbody 1-1
| | YAitem 1-unbounded
| | | @extinction [Optional]
| | | | lineN 1-1
| | | | @VAT [Optional]
| | | | refDoc 0-1
| | | | | @docType [Required]
| | | | | | docID 1-2
| | | | | | @numberingOrg [Optional]
| | | | | | docDate 0-1
| | | | | | @dateForm [Optional]
| | | | | | season 0-1
| | | | | | itemID 0-1
| | | | yarnCode 1-2

```

| | | @numberingOrg [Optional] [Default= CL]

| | | | art 1-1

| | | | | @numberingOrg [Optional]

| | | | | @codeList [Optional]

| | | | | @listName [Optional]

| | | | | @listVersion [Optional]

| | | | color 0-1

| | | | | @numberingOrg [Optional]

| | | | | @codeList [Optional]

| | | | | @listName [Optional]

| | | | | @listVersion [Optional]

| | | | added 0-9

| | | | | @numberingOrg [Optional]

| | | | | @addType [Optional]

| | | | description 0-1

| | | | **yarnCompos 0-1**

| | | | | percCompos 1-9

| | | | | | @fibre [Required]

| | | | **yarnSpecs 0-19**

| | | | - choose -

| | | | | yarnCharText 1-1

| | | | - or -

| | | | | yarnChar 1-1

| | | | - end choose -

| | | | | experimValue 0-1

| | | | | | @um [Optional]

| | | | | | @method [Optional]

| | | | | | @application [Optional]

| | | | | | @idCO [Optional]

| | | | | specValue 0-1

| | | | | | @um [Optional]

| | | | | | @source [Optional]

| | | | | | @method [Optional]

| | | | | | @application [Optional]

| | | | | | @CV [Optional]

| | | | - choose -

| | | | | tolerance 0-2

| | | | | | @um [Required]

| | | | - or -

| | | | | pcTolerance 0-2

| | | | | | @um [Optional]

| | | | - end choose -

| | | | lotN 0-2

| | | | | @numberingOrg [Optional]

| | | | dyeN 0-2

| | | | | @numberingOrg [Optional]

| | | | qty 1-2

| | | | | @um [Required]

| | | | **yarnPack 0-1**

| | | | | **yarnReel 1-1**

| | | | | | @reelType [Required]

| | | | | | @reelMat [Optional]

| | | | | | | yarnReelD 0-1

| | | | | | | | @um [Required]

| | | | | | | yarnReelH 0-1

| | | | | | | | @um [Required]

| | | | | | | yarnConeAngle 0-1

| | | | | | | yarnReelQty 0-2

| | | | | | | | @um [Required]

| | | | | | | label 0-1

| | | | | | | labelWrit 0-1

```
| | | | yarnInWrap 0-1  
| | | | | yarnReelWrap 1-1  
| | | | | label 0-1  
| | | | | labelWrit 0-1  
| | | | | - choose -  
| | | | | yarnOutWrapText 0-1  
| | | | | - or -  
| | | | | yarnOutWrap 0-1  
| | | | | - end choose -  
| | | | | note 0-19  
| | | | | @numberingOrg [Optional]  
| | | | | @codeList [Optional]  
| | | | | @noteLabel [Optional]
```

2.2 Detailed description of document elements

Following tables show all elements (complex and simple) used in this document. Description includes: 1) element's information: xml tag, name, brief description, data type and syntax constraints; 2) information about use of the element in a particular position in the document: xpath and possible associated notes.

2.2.1 Complex elements (Aggregate Business Information Entities)

Complex elements are those elements whose content is composed of other elements (childs).Complex elements are alphabetically ordered.

buyer	details of the Buyer - base type: Nad, (XPath: YARNDesAdvise/TAheader/buyer) 1-1
EPCList	list of identifiers used for tracing a physical item with RFID technology (XPath: YARNDesAdvise/shipInfo/packages/EPCList) 0-1 - note: <i>here the RFID tags of the packages can be identified</i>
packageDim	dimensions of a transport package (XPath: YARNDesAdvise/shipInfo/packages/packageDim) 0-1
packages	describes the composition of the transport packaging. Each element corresponds to a type of package: type, quantity, hierarchic level, list of identifiers of the single packages (XPath: YARNDesAdvise/shipInfo/packages) 0-99 - note: <i>this data group must be iterated for each type of package</i>
refDoc	identification of a document and of an item thereof, to which the message makes reference (XPath: YARNDesAdvise/TAheader/refDoc) 0-9 (XPath: YARNDesAdvise/YAbody/YAitem/refDoc) 0-1
shipInfo	miscellaneous informations on transport and transport packages, referred either to the whole document or to the single item (XPath: YARNDesAdvise/shipInfo) 0-1
supplier	details of the Supplier - base type: Nad, (XPath: YARNDesAdvise/TAheader/supplier) 1-1
TAheader	header of the TEXTILES (YARN) DESPATCH ADVISE (XPath: YARNDesAdvise/TAheader) 1-1
thirdParty	details of the Third Party, different from Buyer or Supplier - base type: Nad, (XPath: YARNDesAdvise/TAheader/thirdParty) 0-5 - note: <i>here the Consignee when different from the Client must be specified</i>
trade	general terms of trade for the specified supply (XPath: YARNDesAdvise/trade) 0-1
transInfo	details of transport: mode, carrier and delivery place (XPath: YARNDesAdvise/shipInfo/transInfo) 0-5 - note: <i>this data group can be iterated for each transport leg</i>

YAbody	body of the document YARN DESPATCH ADVISE (XPath: YARNDesAdvise/YAbody) 1-1
YAitem	line item of the document YARN DESPATCH ADVISE (XPath: YARNDesAdvise/YAbody/YAitem) 1-unbounded
yarnCode	full codification of a yarn product (XPath: YARNDesAdvise/YAbody/YAitem/yarnCode) 1-2
yarnCompos	fibrous composition of a yarn product (XPath: YARNDesAdvise/YAbody/YAitem/yarnCompos) 0-1
yarnInWrap	details specifying the inner wrapping of a yarn product (XPath: YARNDesAdvise/YAbody/YAitem/yarnPack/yarnInWrap) 0-1 (XPath: YARNDesAdvise/yarnPack/yarnInWrap) 0-1
yarnPack	details of type of presentation used for the yarn (XPath: YARNDesAdvise/yarnPack) 0-1 (XPath: YARNDesAdvise/YAbody/YAitem/yarnPack) 0-1
yarnReel	details of the packaging of a yarn product (bobbin & reel,..) (XPath: YARNDesAdvise/YAbody/YAitem/yarnPack/yarnReel) 1-1 (XPath: YARNDesAdvise/yarnPack/yarnReel) 1-1
yarnSpecs	technical properties of a yarn product linked to an operation of the sub-contracted production of yarn or to the purchas of yarn (XPath: YARNDesAdvise/YAbody/YAitem/yarnSpecs) 0-19

2.2.2 Simple elements (Basic Business Information Entities)

Simple elements are those elements whose content is characterized by a data type plus a domain of possible values. Simple elements are alphabetically ordered.

added	additional code of the product (complementing the formers) - base type: string, max length: 15, (XPath: YARNDesAdvise/YAbody/YAitem/yarnCode/added) 0-9 - note: <i>here an additional codification (see table T44) can be specified</i>
@addType	qualifier of the additional coding of a product - base type: string, cod. table: T44 http://www.moda-ml.net/moda-ml/repository/codelist/v2013-1/gc_T44.xml (XPath: YARNDesAdvise/YAbody/YAitem/yarnCode/added/@addType) [Optional]
@application	force or similar condition (e.g. no. of revolutions) applied in a test as specified within the standard - base type: string, max length: 15, (XPath: YARNDesAdvise/YAbody/YAitem/yarnSpecs/experimValue/@application) [Optional] (XPath: YARNDesAdvise/YAbody/YAitem/yarnSpecs/specValue/@application) [Optional]
art	article number of the product - base type: string, max length: 25, (XPath: YARNDesAdvise/YAbody/YAitem/yarnCode/art) 1-1
carrier	identification of the transport carrier - base type: string, max length: 40, (XPath: YARNDesAdvise/shiplInfo/transInfo/carrier) 0-1

city	<p>name of the city (town, village)</p> <p>- base type: string, max length: 40, (XPath: YARNDesAdvise/TAheader/buyer/city) 0-1 (XPath: YARNDesAdvise/TAheader/thirdParty/city) 0-1 (XPath: YARNDesAdvise/TAheader/supplier/city) 0-1</p>
@codeList	<p>it specifies the URL where the list of codes used to make an instance of the element can be found</p> <p>- base type: string, max length: 255, (XPath: YARNDesAdvise/YAbody/YAitem/yarnCode/color/@codeList) [Optional]</p> <p>- nota: <i>this attribute should be ALTERNATIVE to the others</i> (XPath: YARNDesAdvise/TAheader/note/@codeList) [Optional]</p> <p>- nota: <i>must be used to provide (URL) the list of codes used in "noteLabel"</i> (XPath: YARNDesAdvise/YAbody/YAitem/note/@codeList) [Optional]</p> <p>- nota: <i>must be used to provide (URL) the list of codes used in "noteLabel"</i> (XPath: YARNDesAdvise/YAbody/YAitem/yarnCode/art/@codeList) [Optional]</p> <p>- nota: <i>this attribute should be ALTERNATIVE to the others</i></p>
color	<p>colour number of the product, when not included in the model or fabric code</p> <p>- base type: string, max length: 15, (XPath: YARNDesAdvise/YAbody/YAitem/yarnCode/color) 0-1</p>
country	<p>code of the nation</p> <p>- base type: string, cod. table: T10 http://www.moda-ml.net/moda-ml/repository/codelist/v2013-1/gc_T10.xml (XPath: YARNDesAdvise/TAheader/supplier/country) 0-1 (XPath: YARNDesAdvise/TAheader/buyer/country) 0-1 (XPath: YARNDesAdvise/TAheader/thirdParty/country) 0-1</p>
@CV	<p>coefficient of variation (CV) of a measurement</p> <p>- base type: decimal, (XPath: YARNDesAdvise/YAbody/YAitem/yarnSpecs/specValue/@CV) [Optional]</p>
@dateForm	<p>format used for the date</p> <p>- base type: string, cod. table: NT29 http://www.moda-ml.net/moda-ml/repository/codelist/v2013-1/gc_NT29.xml (XPath: YARNDesAdvise/TAheader/msgDate/@dateForm) [Optional] (XPath: YARNDesAdvise/YAbody/YAitem/refDoc/docDate/@dateForm) [Optional] (XPath: YARNDesAdvise/TAheader/refDoc/docDate/@dateForm) [Optional] (XPath: YARNDesAdvise/shipInfo/delEffectiveDate/@dateForm) [Optional]</p>
delEffectiveDate	<p>effective date of delivery of goods (declared in Despatch), according to one of the patterns YYYY-MM-DD, YYYY-MM-DD:HH-MM or YYYY-WW.</p> <p>- base type: string, (XPath: YARNDesAdvise/shipInfo/delEffectiveDate) 0-1</p>
deliveryPlace	<p>place of delivery of goods, ultimate or related to a given leg</p> <p>- base type: string, max length: 40, (XPath: YARNDesAdvise/shipInfo/transInfo/deliveryPlace) 0-1</p>
dept	<p>name or code of a contact department within a Party</p> <p>- base type: string, max length: 40, (XPath: YARNDesAdvise/TAheader/thirdParty/dept) 0-1 (XPath: YARNDesAdvise/TAheader/supplier/dept) 0-1 (XPath: YARNDesAdvise/TAheader/buyer/dept) 0-1</p>
description	<p>free text description of a product</p>

	- base type: string, max length: 70, (XPath: YARNDesAdvise/YAbody/YAitem/yarnCode/description) 0-1
docDate	date of issue of the referenced document, according to one of the patterns YYYY-MM-DD, YYYY-MM-DD:HH-MM or YYYY-WW. - base type: string, (XPath: YARNDesAdvise/TAheader/refDoc/docDate) 0-1 (XPath: YARNDesAdvise/YAbody/YAitem/refDoc/docDate) 0-1
docID	identification number of the referenced document SINCE 2008-1 ITS USE IN THE HEADER IS DISCOURAGED (REPLACED BY msgID) - base type: string, max length: 80, (XPath: YARNDesAdvise/YAbody/YAitem/refDoc/docID) 1-2 (XPath: YARNDesAdvise/TAheader/refDoc/docID) 1-2 (XPath: YARNDesAdvise/TAheader/docID) 0-1
@docType	type or class to which the referenced document belongs - base type: string, cod. table: T21 http://www.moda-ml.net/moda-ml/repository/codelist/v2013-1/gc_T21.xml (XPath: YARNDesAdvise/YAbody/YAitem/refDoc/@docType) [Required] (XPath: YARNDesAdvise/TAheader/refDoc/@docType) [Required]
dyeN	number of the dying batch of a textile product - base type: string, max length: 15, (XPath: YARNDesAdvise/YAbody/YAitem/dyeN) 0-2
@email	electronic mail address of the contact person within a Party - base type: string, max length: 80, (XPath: YARNDesAdvise/TAheader/thirdParty/person/@email) [Optional] (XPath: YARNDesAdvise/TAheader/buyer/person/@email) [Optional] (XPath: YARNDesAdvise/TAheader/supplier/person/@email) [Optional]
EPC	identifier used for tracing a physical item with RFID technology - base type: string, (XPath: YARNDesAdvise/shipInfo/packages/EPCList/EPC) 1-unbounded
experimValue	experimental value of the measurement - base type: decimal, (XPath: YARNDesAdvise/YAbody/YAitem/yarnSpecs/experimValue) 0-1
@extinction	specified if the referred position (document/line) in is cleared (exhausted) by this line item. Value: 0 = not exhausted; 1 = exhausted) - base type: boolean, (XPath: YARNDesAdvise/YAbody/YAitem/@extinction) [Optional]
@fax	fax number of the contact person within a Party - base type: string, max length: 35, (XPath: YARNDesAdvise/TAheader/thirdParty/person/@fax) [Optional] (XPath: YARNDesAdvise/TAheader/buyer/person/@fax) [Optional] (XPath: YARNDesAdvise/TAheader/supplier/person/@fax) [Optional]
@fibre	type of fibre used in a textile product - base type: string, cod. table: T19 http://www.moda-ml.net/moda-ml/repository/codelist/v2013-1/gc_T19.xml (XPath: YARNDesAdvise/YAbody/YAitem/yarnCompos/percCompos/@fibre) [Required]
grossWeight	the gross weight of the overall goods supply, declared for transport or customs purpose - base type: decimal, min inclusive: 0, fraction digits: 2, (XPath: YARNDesAdvise/shipInfo/transInfo/grossWeight) 0-1
height	effective height of a specified object - base type: decimal, min inclusive: 0, fraction digits: 2,

	(XPath: YARNDesAdvise/shipInfo/packages/packageDim/height) 0-1
id	primary identification code of a Party; it is recommended the format: nation code (ISO 3166) + VAT identification number (11 crt), with the qualifier "numberingOrg"= MF - base type: string, max length: 15, (XPath: YARNDesAdvise/TAheader/thirdParty/id) 1-1 (XPath: YARNDesAdvise/TAheader/buyer/id) 1-1 (XPath: YARNDesAdvise/TAheader/supplier/id) 1-1
@idCO	primary identification code of the Party executing the test; it is recommended the format: nation code (ISO 3166) + VAT identification number (11 crt). - base type: string, max length: 15, (XPath: YARNDesAdvise/YAbody/YAitem/yarnSpecs/experimValue/@idCO) [Optional]
incoTerm	specification of the terms of trade (INCOTERMS) - base type: string, cod. table: T3 http://www.moda-ml.net/moda-ml/repository/codelist/v2013-1/gc_T3.xml (XPath: YARNDesAdvise/trade/incoTerm) 1-1
incoTermText	free text specifying the terms of trade (incoterm, location) - base type: string, max length: 70, (XPath: YARNDesAdvise/trade/incoTermText) 1-1
itemID	number of the line/item of the referenced document - base type: string, max length: 6, (XPath: YARNDesAdvise/TAheader/refDoc/itemID) 0-1 (XPath: YARNDesAdvise/YAbody/YAitem/refDoc/itemID) 0-1
label	indicates if the physical object specified has to be labelled - base type: boolean, (XPath: YARNDesAdvise/YAbody/YAitem/yarnPack/yarnReel/label) 0-1 (XPath: YARNDesAdvise/yarnPack/yarnInWrap/label) 0-1 (XPath: YARNDesAdvise/YAbody/YAitem/yarnPack/yarnInWrap/label) 0-1 (XPath: YARNDesAdvise/yarnPack/yarnReel/label) 0-1
labelWrit	text that must be written on the lable of a specified physical object when its customization is required - base type: string, max length: 350, (XPath: YARNDesAdvise/yarnPack/yarnReel/labelWrit) 0-1 (XPath: YARNDesAdvise/yarnPack/yarnInWrap/labelWrit) 0-1 (XPath: YARNDesAdvise/YAbody/YAitem/yarnPack/yarnInWrap/labelWrit) 0-1 (XPath: YARNDesAdvise/YAbody/YAitem/yarnPack/yarnReel/labelWrit) 0-1
legalName	legal name of a Party - base type: string, max length: 80, (XPath: YARNDesAdvise/TAheader/thirdParty/legalName) 0-1 (XPath: YARNDesAdvise/TAheader/supplier/legalName) 0-1 (XPath: YARNDesAdvise/TAheader/buyer/legalName) 0-1
length	effective length of a specified object - base type: decimal, min inclusive: 0, fraction digits: 2, (XPath: YARNDesAdvise/shipInfo/packages/packageDim/length) 1-1 - note: <i>here the maximum dimension must also be specified</i>
lineN	number of the line item of the present message (xml document) - base type: positiveInteger, min inclusive: 1, max inclusive: 9999, (XPath: YARNDesAdvise/YAbody/YAitem/lineN) 1-1
@listName	it specifies the name of the list of codes used to make an instance of the element

	<ul style="list-style-type: none"> - base type: string, max length: 40, (XPath: YARNDesAdvise/YAbody/YAitem/yarnCode/color/@listName) [Optional] - nota: <i>this attribute should always be used coupled with "numberingOrg"</i> (XPath: YARNDesAdvise/YAbody/YAitem/yarnCode/art/@listName) [Optional] - nota: <i>this attribute should always be used coupled with "numberingOrg"</i>
@listVersion	<p>it specifies the version of the list of codes used to make an instance of the element</p> <ul style="list-style-type: none"> - base type: string, max length: 6, (XPath: YARNDesAdvise/YAbody/YAitem/yarnCode/color/@listVersion) [Optional] - nota: <i>this attribute should always be used coupled with "numberingOrg" and "listName"</i> (XPath: YARNDesAdvise/YAbody/YAitem/yarnCode/art/@listVersion) [Optional] - nota: <i>this attribute should always be used coupled with "numberingOrg" and "listName"</i>
location	<p>specification of a location</p> <ul style="list-style-type: none"> - base type: string, max length: 40, (XPath: YARNDesAdvise/trade/location) 0-1 - note: <i>place to which the INCOTERM applies</i>
@logo	<p>company logo (URL of the image jpeg or gif). It is recommended that the width of the image does not exceed 640 pixel.</p> <ul style="list-style-type: none"> - base type: string, max length: 255, (XPath: YARNDesAdvise/TAheader/supplier/@logo) [Optional] (XPath: YARNDesAdvise/TAheader/buyer/@logo) [Optional]
lotN	<p>lot number of a product or batch number of the raw material</p> <ul style="list-style-type: none"> - base type: string, max length: 15, (XPath: YARNDesAdvise/YAbody/YAitem/lotN) 0-2
@LRI	<p>attribute usable to format a string according to a customized User rule (local rule)</p> <ul style="list-style-type: none"> - base type: string, cod. table: NT3 http://www.moda-ml.net/moda-ml/repository/codelist/v2013-1/gc_NT3.xml (XPath: YARNDesAdvise/trade/location/@LRI) [Optional]
@method	<p>standard protocol or method employed in a test to evaluate a characteristic or a parameter</p> <ul style="list-style-type: none"> - base type: string, max length: 25, (XPath: YARNDesAdvise/YAbody/YAitem/yarnSpecs/experimValue/@method) [Optional] - nota: <i>we recommend the specification of the method of measure only when different from the one of the MODA-ML coding system</i> (XPath: YARNDesAdvise/YAbody/YAitem/yarnSpecs/specValue/@method) [Optional]
msgDate	<p>date of issue of the present message (xml document), according to one of the patterns YYYY-MM-DD, YYYY-MM-DD:HH-MM or YYYY-WW.</p> <ul style="list-style-type: none"> - base type: string, (XPath: YARNDesAdvise/TAheader/msgDate) 1-1
@msgfunction	<p>function performed by the present message with regards to the transmission</p> <ul style="list-style-type: none"> - base type: string, cod. table: NT18 http://www.moda-ml.net/moda-ml/repository/codelist/v2013-1/gc_NT18.xml (XPath: YARNDesAdvise/@msgfunction) [Optional] [Default= OR]

msgID	key identifier of the document in the information system of the issuing Party - base type: string, max length: 35, (XPath: YARNDesAdvise/TAheader/msgID) 0-1
msgN	identification number given to the message (xml document) by its issuer - base type: string, max length: 35, (XPath: YARNDesAdvise/TAheader/msgN) 1-1
netWeight	the net weight of the overall goods supply, declared for transport or customs purpose - base type: decimal, min inclusive: 0, fraction digits: 2, (XPath: YARNDesAdvise/shipInfo/transInfo/netWeight) 0-1
note	free text or structured (computer processing) note. For note structuring use the attributes "noteLabel" and "codelist" - base type: string, max length: 350, (XPath: YARNDesAdvise/TAheader/note) 0-19 (XPath: YARNDesAdvise/YAbody/YAitem/note) 0-19
@noteLabel	subject qualifier of a note - base type: string, max length: 35, (XPath: YARNDesAdvise/YAbody/YAitem/note/@noteLabel) [Optional] - nota: <i>must be used to qualify the subject of the note</i> (XPath: YARNDesAdvise/TAheader/note/@noteLabel) [Optional] - nota: <i>must be used to qualify the subject of the note</i>
@numberingOrg	code specifying the organisation who has created or owns the coding or numbering system - base type: string, cod. table: NT6 http://www.moda-ml.net/moda-ml/repository/codelist/v2013-1/gc_NT6.xml (XPath: YARNDesAdvise/YAbody/YAitem/refDoc/docID/@numberingOrg) [Optional] - nota: <i>here can be specified whose document numbering is used (e.g.: Client, Supplier, ..)</i> (XPath: YARNDesAdvise/YAbody/YAitem/note/@numberingOrg) [Optional] (XPath: YARNDesAdvise/YAbody/YAitem/yarnCode/added/@numberingOrg) [Optional] (XPath: YARNDesAdvise/TAheader/buyer/id/@numberingOrg) [Optional] (XPath: YARNDesAdvise/YAbody/YAitem/dyeN/@numberingOrg) [Optional] (XPath: YARNDesAdvise/TAheader/refDoc/docID/@numberingOrg) [Optional] - nota: <i>here can be specified whose document numbering is used (e.g.: Client, Supplier, ..)</i> (XPath: YARNDesAdvise/YAbody/YAitem/lotN/@numberingOrg) [Optional] (XPath: YARNDesAdvise/TAheader/thirdParty/id/@numberingOrg) [Optional] (XPath: YARNDesAdvise/TAheader/note/@numberingOrg) [Optional] (XPath: YARNDesAdvise/TAheader/docID/@numberingOrg) [Optional] - nota: <i>here can be specified whose document numbering is used (e.g.: Client, Supplier, ..)</i> (XPath: YARNDesAdvise/shipInfo/packages/EPClist/EPC/@numberingOrg) [Optional] (XPath: YARNDesAdvise/YAbody/YAitem/yarnCode/@numberingOrg) [Optional] [Default= CL] (XPath: YARNDesAdvise/TAheader/supplier/id/@numberingOrg) [Optional] (XPath: YARNDesAdvise/YAbody/YAitem/yarnCode/color/@numberingOrg) [Optional]

	<p>- nota: <i>this attribute should be used either single or coupled with "listName" and "listVersion"</i> (XPath: YARNDesAdvise/YAbody/YAitem/yarnCode/art/@numberingOrg) [Optional]</p> <p>- nota: <i>this attribute should be used either single or coupled with "listName" and "listVersion"</i> (XPath: YARNDesAdvise/shiplInfo/packages/packageN/@numberingOrg) [Optional]</p>
package	<p>code specifying the type of package used for transport and delivery</p> <p>- base type: string, cod. table: T11 http://www.moda-ml.net/moda-ml/repository/codelist/v2013-1/gc_T11.xml (XPath: YARNDesAdvise/shiplInfo/packages/package) 1-1</p>
@packageContainerN	<p>reference usable to indicate the outer package containing this package</p> <p>- base type: string, max length: 25, (XPath: YARNDesAdvise/shiplInfo/packages/packageN/@packageContainerN) [Optional]</p>
@packageLevel	<p>level used to indicate the hierarchical structure of the packages (from outer to inner levels)</p> <p>- base type: positiveInteger, min inclusive: 1, max inclusive: 9, (XPath: YARNDesAdvise/shiplInfo/packages/@packageLevel) [Optional]</p> <p>- nota: <i>number fixing the level of the package in the transport stucture (from inner to outer). Must either be used for all package types or not be used</i></p>
packageN	<p>serial number used to identify a transport package</p> <p>- base type: string, max length: 25, (XPath: YARNDesAdvise/shiplInfo/packages/packageN) 0-unbounded</p> <p>- note: <i>here the serial no.s of the packages can be identified</i></p>
packageQty	<p>quantity of the specified transport packages</p> <p>- base type: positiveInteger, (XPath: YARNDesAdvise/shiplInfo/packages/packageQty) 0-1</p> <p>- note: <i>total for the type of package</i></p>
packageText	<p>free text specifying the type of package used for transport and delivery</p> <p>- base type: string, max length: 40, (XPath: YARNDesAdvise/shiplInfo/packages/packageText) 1-1</p>
pcTolerance	<p>percent deviation tolerated on the value of a measurement (it must have a plus or minus sign)</p> <p>- base type: decimal, min inclusive: 0, max inclusive: 100, total digits: 2, (XPath: YARNDesAdvise/YAbody/YAitem/yarnSpecs/pcTolerance) 0-2</p>
percCompos	<p>fiber rate in the product composition</p> <p>- base type: decimal, min inclusive: 0, max inclusive: 100, fraction digits: 2, (XPath: YARNDesAdvise/YAbody/YAitem/yarnCompos/percCompos) 1-9</p>
person	<p>name of the contact person within a Party</p> <p>- base type: string, max length: 40, (XPath: YARNDesAdvise/TAheader/thirdParty/person) 0-1 (XPath: YARNDesAdvise/TAheader/supplier/person) 0-1 (XPath: YARNDesAdvise/TAheader/buyer/person) 0-1</p>
@phone	<p>phone number of the contact person within a Party</p> <p>- base type: string, max length: 35, (XPath: YARNDesAdvise/TAheader/buyer/person/@phone) [Optional] (XPath: YARNDesAdvise/TAheader/supplier/person/@phone) [Optional]</p>

	(XPath: YARNDesAdvise/TAheader/thirdParty/person/@phone) [Optional]
postCode	code defining the postal zone - base type: string, max length: 10, (XPath: YARNDesAdvise/TAheader/thirdParty/postCode) 0-1 (XPath: YARNDesAdvise/TAheader/buyer/postCode) 0-1 (XPath: YARNDesAdvise/TAheader/supplier/postCode) 0-1
qty	net quantity of the article or object correlated, qualified by the function of the document (ordering, delivering, ..) and by the context - base type: decimal, min inclusive: 0, fraction digits: 2, (XPath: YARNDesAdvise/YAbody/YAitem/qty) 1-2
@reelMat	type of material of which a package for yarn is made - base type: string, cod. table: T30 http://www.moda-ml.net/moda-ml/repository/codelist/v2013-1/gc_T30.xml (XPath: YARNDesAdvise/YAbody/YAitem/yarnPack/yarnReel/@reelMat) [Optional] (XPath: YARNDesAdvise/yarnPack/yarnReel/@reelMat) [Optional]
@reelType	type of package used for a yarn product - base type: string, cod. table: T29 http://www.moda-ml.net/moda-ml/repository/codelist/v2013-1/gc_T29.xml (XPath: YARNDesAdvise/YAbody/YAitem/yarnPack/yarnReel/@reelType) [Required] (XPath: YARNDesAdvise/yarnPack/yarnReel/@reelType) [Required]
@role	Third Party role qualifier - base type: string, cod. table: NT2 http://www.moda-ml.net/moda-ml/repository/codelist/v2013-1/gc_NT2.xml (XPath: YARNDesAdvise/TAheader/thirdParty/@role) [Required]
season	sale season; defined as: season (1 crt) + year (4 crt) - season: S/S=1 A/W=2 Spring=3 Summer=4 Autumn=5 Winter=6: for more than four seasons use alphabetic sequence: 1st season=A 2nd season=B etc.etc. - base type: string, max length: 15, (XPath: YARNDesAdvise/YAbody/YAitem/refDoc/season) 0-1 - note: here indicates the season to which the referenced document belongs (XPath: YARNDesAdvise/TAheader/refDoc/season) 0-1 - note: here indicates the season to which the referenced document belongs
@sender	qualifier that specifies the Party issuing of the document - base type: boolean, (XPath: YARNDesAdvise/TAheader/buyer/@sender) [Optional] - nota: This attribute is mandatory when the STYLESHEET must be produced (XPath: YARNDesAdvise/TAheader/thirdParty/@sender) [Optional] - nota: This attribute is mandatory when the STYLESHEET must be produced (XPath: YARNDesAdvise/TAheader/supplier/@sender) [Optional] - nota: This attribute is mandatory when the STYLESHEET must be produced
@source	party who has provided the data - base type: string, cod. table: NT12 http://www.moda-ml.net/moda-ml/repository/codelist/v2013-1/gc_NT12.xml (XPath: YARNDesAdvise/YAbody/YAitem/yarnSpecs/specValue/@source) [Optional]
specValue	value requested for a property or a parameter that is measured

	- base type: decimal, (XPath: YARNDesAdvise/YAbody/YAitem/yarnSpecs/specValue) 0-1
street	street and building number identifying a location - base type: string, max length: 80, (XPath: YARNDesAdvise/TAheader/thirdParty/street) 0-1 (XPath: YARNDesAdvise/TAheader/supplier/street) 0-1 (XPath: YARNDesAdvise/TAheader/buyer/street) 0-1
subCountry	short name or code of the sub-country entity - base type: string, max length: 9, (XPath: YARNDesAdvise/TAheader/thirdParty/subCountry) 0-1 (XPath: YARNDesAdvise/TAheader/buyer/subCountry) 0-1 (XPath: YARNDesAdvise/TAheader/supplier/subCountry) 0-1
@TAtype	type of Despatch advise - base type: string, cod. table: NT10 http://www.moda-ml.net/moda-ml/repository/codelist/v2013-1/gc_NT10.xml (XPath: YARNDesAdvise/@TAtype) [Optional] [Default= STD]
@TID	serial number wired into the RFID chip - base type: string, (XPath: YARNDesAdvise/shipInfo/packages/EPCList/EPC/@TID) [Optional]
tolerance	deviation tolerated on the value of a measurement (it must have a plus or minus sign) - base type: decimal, (XPath: YARNDesAdvise/YAbody/YAitem/yarnSpecs/tolerance) 0-2
transCondition	special condition of transport or special service requested to the Forwarder - base type: string, cod. table: T38 http://www.moda-ml.net/moda-ml/repository/codelist/v2013-1/gc_T38.xml (XPath: YARNDesAdvise/shipInfo/transInfo/transCondition) 0-3
transConditionText	free text description of the special condition of transport or special service requested to the Forwarder - base type: string, max length: 100, (XPath: YARNDesAdvise/shipInfo/transInfo/transConditionText) 0-1
transMeans	means of transport, in general or referred to a specific leg - base type: string, cod. table: T40 http://www.moda-ml.net/moda-ml/repository/codelist/v2013-1/gc_T40.xml (XPath: YARNDesAdvise/shipInfo/transInfo/transMeans) 0-1
transMode	way of transport, in general or referred to the specified leg - base type: string, cod. table: T8 http://www.moda-ml.net/moda-ml/repository/codelist/v2013-1/gc_T8.xml (XPath: YARNDesAdvise/shipInfo/transInfo/transMode) 1-1
@transReason	reason for the transport - base type: string, cod. table: NT11 http://www.moda-ml.net/moda-ml/repository/codelist/v2013-1/gc_NT11.xml (XPath: YARNDesAdvise/shipInfo/transInfo/@transReason) [Optional]
@um	specification of the unit of measure - base type: string, cod. table: NT7 http://www.moda-ml.net/moda-ml/repository/codelist/v2013-1/gc_NT7.xml (XPath: YARNDesAdvise/YAbody/YAitem/qty/@um) [Required] (XPath: YARNDesAdvise/yarnPack/yarnReel/yarnReelID/@um) [Required] (XPath: YARNDesAdvise/YAbody/YAitem/yarnPack/yarnReel/yarnReelQty/@um) [Required] (XPath: YARNDesAdvise/shipInfo/transInfo/grossWeight/@um) [Required] (XPath: YARNDesAdvise/shipInfo/transInfo/netWeight/@um) [Required] (XPath: YARNDesAdvise/YAbody/YAitem/yarnPack/yarnReel/

	<p>yarnReelH/@um) [Required] (XPath: YARNDesAdvise/yarnPack/yarnReel/yarnReelH/@um) [Required] (XPath: YARNDesAdvise/yarnPack/yarnReel/yarnReelQty/@um) [Required] (XPath: YARNDesAdvise/YAbody/YAitem/yarnPack/yarnReel/ yarnReelD/@um) [Required] (XPath: YARNDesAdvise/YAbody/YAitem/yarnSpecs/specValue/@um) [Optional] (XPath: YARNDesAdvise/shipInfo/packages/packageDim/width/@um) [Required] (XPath: YARNDesAdvise/YAbody/YAitem/yarnSpecs/experimValue/@um) [Optional] (XPath: YARNDesAdvise/shipInfo/packages/packageDim/length/@um) [Required] (XPath: YARNDesAdvise/YAbody/YAitem/yarnSpecs/pcTolerance/@um) [Optional] - nota: <i>to be used when it has to be soecified if the declared percentage is by weight, volume, etc...</i> (XPath: YARNDesAdvise/YAbody/YAitem/yarnSpecs/tolerance/@um) [Required] (XPath: YARNDesAdvise/shipInfo/packages/packageDim/height/@um) [Required]</p>
@useProfile	<p>use profile to which the present document if compliant if it was agreed by the parties. It is suggested a URI with reference to the firms or the URL of the profile. - base type: string, (XPath: YARNDesAdvise/@useProfile) [Optional]</p>
@VAT	<p>VAT rate or code (deprecated, use dtScheme element) - base type: string, cod. table: NT16 http://www.moda-ml.net/moda-ml/repository/codelist/v2013-1/gc_NT16.xml (XPath: YARNDesAdvise/TAheader/thirdParty/@VAT) [Optional] (XPath: YARNDesAdvise/YAbody/YAitem/lineN/@VAT) [Optional]</p>
@version	<p>Dictionary version from which the instance has been created - base type: string, cod. table: NT100 http://www.moda-ml.net/moda-ml/repository/codelist/v2013-1/gc_NT100.xml (XPath: YARNDesAdvise/@version) [Optional] [Default= 2013-1]</p>
width	<p>effective width of a specified object - base type: decimal, min inclusive: 0, fraction digits: 2, (XPath: YARNDesAdvise/shipInfo/packages/packageDim/width) 0-1</p>
yarnChar	<p>physical or mechanical parameter used to define a property of a yarn - base type: string, cod. table: T24 http://www.moda-ml.net/moda-ml/repository/codelist/v2013-1/gc_T24.xml (XPath: YARNDesAdvise/YAbody/YAitem/yarnSpecs/yarnChar) 1-1</p>
yarnCharText	<p>free text describing the physical or mechanical parameter used to define a property of a yarn - base type: string, max length: 40, (XPath: YARNDesAdvise/YAbody/YAitem/yarnSpecs/yarnCharText) 1-1</p>
yarnConeAngle	<p>tapering angle of the cone on which a yarn is reeled - base type: positiveInteger, (XPath: YARNDesAdvise/yarnPack/yarnReel/yarnConeAngle) 0-1 (XPath: YARNDesAdvise/YAbody/YAitem/yarnPack/yarnReel/yarnConeAngle) 0- 1</p>
yarnOutWrap	<p>code specifying the type of outer wrapping or packing of a yarn - base type: string, cod. table: T33 http://www.moda-ml.net/moda-ml/repository/codelist/v2013-1/gc_T33.xml</p>

	(XPath: YARNDesAdvise/yarnPack/yarnOutWrap) 0-1 (XPath: YARNDesAdvise/YAbody/YAitem/yarnPack/yarnOutWrap) 0-1
yarnOutWrapText	free text specifying the type of outer wrapping or packing of a yarn - base type: string, max length: 40, (XPath: YARNDesAdvise/yarnPack/yarnOutWrapText) 0-1 (XPath: YARNDesAdvise/YAbody/YAitem/yarnPack/yarnOutWrapText) 0-1
yarnReelID	diameter of the bobbin used for a yarn product - base type: decimal, min inclusive: 0, fraction digits: 2, (XPath: YARNDesAdvise/YAbody/YAitem/yarnPack/yarnReel/yarnReelID) 0-1 (XPath: YARNDesAdvise/yarnPack/yarnReel/yarnReelID) 0-1
yarnReelH	height of the bobbin used a yarn product - base type: decimal, min inclusive: 0, fraction digits: 2, (XPath: YARNDesAdvise/yarnPack/yarnReel/yarnReelH) 0-1 (XPath: YARNDesAdvise/YAbody/YAitem/yarnPack/yarnReel/yarnReelH) 0-1
yarnReelQty	quantity of yarn (by weight or length) wound upon a bobbin - base type: decimal, min inclusive: 0, fraction digits: 2, (XPath: YARNDesAdvise/yarnPack/yarnReel/yarnReelQty) 0-2 (XPath: YARNDesAdvise/YAbody/YAitem/yarnPack/yarnReel/yarnReelQty) 0-2
yarnReelWrap	type of wrapping in which a package of yarn is wrapped - base type: string, cod. table: T32 http://www.moda-ml.net/moda-ml/repository/codelist/v2013-1/gc_T32.xml (XPath: YARNDesAdvise/yarnPack/yarnInWrap/yarnReelWrap) 1-1 (XPath: YARNDesAdvise/YAbody/YAitem/yarnPack/yarnInWrap/yarnReelWrap) 1-1

2.3 Enumeration tables

List of enumeration tables used in the XML document. You can find the corresponding codes at: <http://www.moda-ml.org/moda-ml/imple/moda-ml-2013-1.asp?lingua=en&pag=6>

NT10 - Despatch Advise type
NT100 - eBIZ Moda-ML version
NT11 - transport causal
NT12 - data source
NT16 - VAT rate or code
NT18 - message function
NT2 - third party qualifier
NT29 - format of a date
NT3 - data format
NT6 - coding system owner/issuer
NT7 - unity of measure
T10 - ISO3166 - Country
T11 - transport package type
T19 - fibre type
T21 - type of document
T24 - yarn characteristics type
T29 - type of yarn package
T3 - terms of delivery
T30 - support of yarn package - material
T32 - yarn reel wrapping type
T33 - yarn outer packing
T38 - transport conditions
T40 - type of transport means
T44 - additional code type
T8 - Modes of Transport

Annex A

Representative images of the principal complex elements' structure.

