



<http://www.moda-ml.org>

## IMPLEMENTATION GUIDE TRANSACTION "SPINNING OFFER"

Version: 2013-1

Date of release: 18/11/2011

Document code: G056

XML Schema repository:<http://www.moda-ml.org/moda-ml/repository/schema/v2013-1/default.asp>

Guides repository:<http://www.moda-ml.org/moda-ml/repository/guide/v2013-1/default.asp>

Guide filename: G056-MODA-ML-SpinningOffer.pdf

# 1. BUSINESS DESCRIPTION

## 1.1 Scope

The present guide has been issued to assist the companies of the Textile-Clothing sector in the implementation of the standard XML document type "SPINNING OFFER", providing all the instruction required for its use in the context of e-commerce between Subcontractors and their Customers shown in the enclosed diagram

All the rules required for the construction and validation of the document are embedded into the specific XML-Schema, which is detailed in section "Implementation guide".

## 1.2 Generalities

The Offer is used by a Subcontractor to respond to the Request of a Yarn Producer for the spinning of a raw material.

The Offer is structured in four levels:

Macro-type of Work offered = document root (7 types of Request)

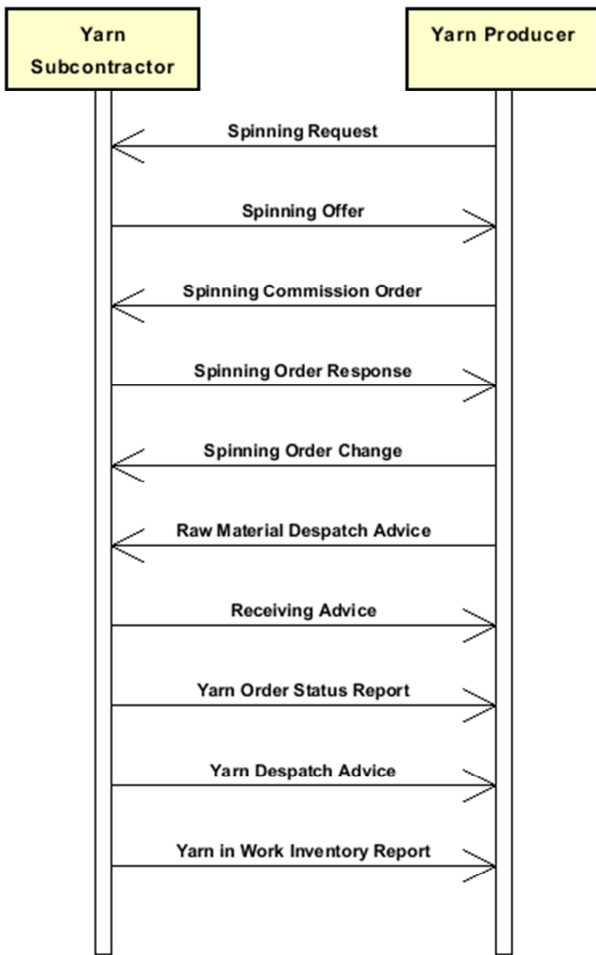
Product Family = document qualifier (type of product with reference to the manufacturing process; e.g.: combed yarn, jacquard weaved fabric, ..)

Product Specifications = "xxxSpecs" (technical characteristics and properties of the product)

Operations offered = "XXXMnfrOperation" (details of the works requested)

Quantities, unit measures and prices must be referred to the third level (Line Item)

## 1.3. Possible scenario



## 2. IMPLEMENTATION GUIDE

### 2.1 General structure of XML document

All the business data that can be exchanged through this class of documents are shown in the following "document structure", that provides a simplified vision of the Schema.

In particular:

- the two numbers following each element define its "cardinality" (minimum and maximum number of occurrences); the minimum equal zero indicates that the element is optional, the minimum greater than zero indicates that is mandatory;
- the bold character denotes the complex elements (aggregates of simple elements) that were built for the sake of functionality and re-usability of some complex informations sets. The child elements in each parent element are easily spotted as "indented";
- the symbol "@" denotes an attribute of the preceding element; here "the usage indicator (optional, required, ...)" is shown in square brackets.

### Structure

#### **RAWSpinOffer**

*@msgfunction [Optional] [Default= OR]*

*@yarnProcQualifier [Required]*

*@version [Optional] [Default= 2013-1]*

*@useProfile [Optional]*

| **OFheader 1-1**

| | msgN 1-1

| | - choose -

| | | msgID 0-1

| | - or -

| | | docID 0-1

| | | *@numberingOrg [Optional]*

| | - end choose -

| | msgDate 1-1

| | *@dateForm [Optional]*

| | season 0-1

| | validityStart 0-1

| | *@dateForm [Optional]*

| | validityEnd 1-1

| | *@dateForm [Optional]*

| | **refDoc 1-9**

| | *@docType [Required]*

| | | docID 1-2

| | | *@numberingOrg [Optional]*

| | | docDate 0-1

| | | *@dateForm [Optional]*

| | | season 0-1

| | | itemID 0-1

| | **buyer 1-1**

| | *@logo [Optional]*

| | *@sender [Optional]*

| | | id 1-1

| | | *@numberingOrg [Optional]*

| | | legalName 0-1

| | | dept 0-1

| | | person 0-1

| | | *@email [Optional]*

| | | *@phone [Optional]*

| | | *@fax [Optional]*

- | | street 0-1
- | | city 0-1
- | | subCountry 0-1
- | | country 0-1
- | | postCode 0-1
- choose -
- | | **supplier 1-1**
- | | @logo [Optional]
- | | @sender [Optional]
- | | id 1-1
- | | @numberingOrg [Optional]
- | | legalName 0-1
- | | dept 0-1
- | | person 0-1
- | | @email [Optional]
- | | @phone [Optional]
- | | @fax [Optional]
- | | street 0-1
- | | city 0-1
- | | subCountry 0-1
- | | country 0-1
- | | postCode 0-1

- or -

- | | **subContractor 1-1**
- | | @sender [Optional]
- | | id 1-1
- | | @numberingOrg [Optional]
- | | legalName 0-1
- | | dept 0-1
- | | person 0-1
- | | @email [Optional]
- | | @phone [Optional]
- | | @fax [Optional]
- | | street 0-1
- | | city 0-1
- | | subCountry 0-1
- | | country 0-1
- | | postCode 0-1

- end choose -

- | | note 0-19
- | | @numberingOrg [Optional]
- | | @codeList [Optional]
- | | @noteLabel [Optional]

| **terms 0-1**

- | | **payment 0-5**
- | | @finDiscount [Optional]
- | | @finSurcharge [Optional]

- choose -

- | | | payTerm 1-1

- or -

- | | | payTermText 1-1

- end choose -

- | | | payMode 0-1

- | | **insPayment 0-5**

- | | | @part [Required]

- choose -

- | | | payTerm 1-1

- or -

- | | | payTermText 1-1

- end choose -

- | | | payMode 0-1
- | | **trade 0-1**
- | | | - choose -
- | | | incoTermText 1-1
- | | | - or -
- | | | incoTerm 1-1
- | | | - end choose -
- | | | location 0-1
- | | | @LRI [Optional]
- | | **transInfo 0-1**
- | | | @transReason [Optional]
- | | | transMode 1-1
- | | | carrier 0-1
- | | | deliveryPlace 0-1
- | | | grossWeight 0-1
- | | | @um [Required]
- | | | netWeight 0-1
- | | | @um [Required]
- | | | transMeans 0-1
- | | | transCondition 0-3
- | | | transConditionText 0-1
- | | **allowanceCharge 0-9**
- | | | @VAT [Optional]
- | | | - choose -
- | | | AC\_category 1-1
- | | | - or -
- | | | AC\_categoryText 1-1
- | | | - choose -
- | | | AC\_percent 1-1
- | | | - or -
- | | | AC\_amount 1-1
- | | | - end choose -
- | | | **dtScheme 0-1**
- | | | | @taxType [Required]
- | | | | taxCategory 0-1
- | | | | taxRate 0-1
- | | | | legalRef 0-1
- | | | | @codeList [Required]
- | | | | note 0-19
- | | | | @numberingOrg [Optional]
- | | | | @codeList [Optional]
- | | | | @noteLabel [Optional]

- | **RSOFbody 1-1**
- | | **RSOFitem 1-unbounded**
- | | | @act [Required]
- | | | lineN 1-1
- | | | @VAT [Optional]
- | | | **refDoc 1-1**
- | | | | @docType [Required]
- | | | | docID 1-2
- | | | | @numberingOrg [Optional]
- | | | | docDate 0-1
- | | | | @dateForm [Optional]
- | | | | season 0-1
- | | | | itemID 0-1
- | | | **yarnCompos 0-1**
- | | | | percCompos 1-9
- | | | | @fibre [Required]
- | | | **yarnSpecs 0-9**
- | | | - choose -

```

| | | | yarnCharText 1-1
| | | | - or -
| | | | | yarnChar 1-1
| | | | | - end choose -
| | | | | experimValue 0-1
| | | | | | @um [Optional]
| | | | | | @method [Optional]
| | | | | | @application [Optional]
| | | | | | @idCO [Optional]
| | | | | specValue 0-1
| | | | | | @um [Optional]
| | | | | | @source [Optional]
| | | | | | @method [Optional]
| | | | | | @application [Optional]
| | | | | | @CV [Optional]
| | | | | - choose -
| | | | | tolerance 0-2
| | | | | | @um [Required]
| | | | | - or -
| | | | | | pcTolerance 0-2
| | | | | | | @um [Optional]
| | | | | - end choose -
| | | | | qty 1-2
| | | | | | @um [Required]
| | | | | price 1-1
| | | | | | @um [Optional]
| | | | | | @priceQualifier [Optional] [Default= NET]
| | | | | deliveryDate 1-1
| | | | | | @dateForm [Optional]
| | | | | notBeforeDate 0-1
| | | | | | @dateForm [Optional]
| | | | | thirdParty 0-1
| | | | | | @VAT [Optional]
| | | | | | @role [Required]
| | | | | | @sender [Optional]
| | | | | | id 1-1
| | | | | | | @numberingOrg [Optional]
| | | | | | legalName 0-1
| | | | | | dept 0-1
| | | | | | person 0-1
| | | | | | | @email [Optional]
| | | | | | | @phone [Optional]
| | | | | | | @fax [Optional]
| | | | | | street 0-1
| | | | | | city 0-1
| | | | | | subCountry 0-1
| | | | | | country 0-1
| | | | | | postCode 0-1
| | | | | yarnMnfrOperation 1-9
| | | | | - choose -
| | | | | | jobName 1-1
| | | | | | - or -
| | | | | | | yarnJob 1-1
| | | | | | | - end choose -
| | | | | | | yarnJobTech 0-1
| | | | | | | refDoc 0-1
| | | | | | | | @docType [Required]
| | | | | | | | | docID 1-2
| | | | | | | | | | @numberingOrg [Optional]
| | | | | | | | | docDate 0-1
| | | | | | | | | @dateForm [Optional]

```

```

| | | | season 0-1
| | | | itemID 0-1
| | | | yarnMachine 0-1
| | | | yarnMachineSpecs 0-9
| | | | | yarnMachineParam 1-1
| | | | | specValue 0-1
| | | | | @um [Optional]
| | | | | @source [Optional]
| | | | | @method [Optional]
| | | | | @application [Optional]
| | | | | @CV [Optional]
| | | | - choose -
| | | | | tolerance 0-2
| | | | | @um [Required]
| | | | - or -
| | | | | pcTolerance 0-2
| | | | | @um [Optional]
| | | | - end choose -
| | | | | note 0-19
| | | | | @numberingOrg [Optional]
| | | | | @codeList [Optional]
| | | | | @noteLabel [Optional]
| | | | rawMnfrOperation 0-9
| | | | - choose -
| | | | | rawJob 1-1
| | | | - or -
| | | | | jobName 1-1
| | | | - end choose -
| | | | | refDoc 0-1
| | | | | @docType [Required]
| | | | | | docID 1-2
| | | | | | @numberingOrg [Optional]
| | | | | | docDate 0-1
| | | | | | @dateForm [Optional]
| | | | | | season 0-1
| | | | | | itemID 0-1
| | | | | note 0-19
| | | | | @numberingOrg [Optional]
| | | | | @codeList [Optional]
| | | | | @noteLabel [Optional]
| | | | note 0-19
| | | | @numberingOrg [Optional]
| | | | @codeList [Optional]
| | | | @noteLabel [Optional]

```



## 2.2 Detailed description of document elements

Following tables show all elements (complex and simple) used in this document. Description includes: 1) element's information: xml tag, name, brief description, data type and syntax constraints; 2) information about use of the element in a particular position in the document: xpath and possible associated notes.

### 2.2.1 Complex elements (Aggregate Business Information Entities)

Complex elements are those elements whose content is composed of other elements (childs).Complex elements are alphabetically ordered.

<b>allowanceCharge</b>	Allowances and Charges related to an Order or a contract (XPath: RAWSpinOffer/terms/allowanceCharge) 0-9
<b>buyer</b>	details of the Buyer - base type: Nad, (XPath: RAWSpinOffer/OFheader/buyer) 1-1
<b>dtScheme</b>	set of data usable to declare the duty or tax applied (XPath: RAWSpinOffer/terms/allowanceCharge/dtScheme) 0-1
<b>insPayment</b>	payment details for payment by installments (XPath: RAWSpinOffer/terms/insPayment) 0-5 - note: <i>excluded the case of offers, this set of data is alternative to payment set and must be iterated for each payment installment</i>
<b>OFheader</b>	header of the document OFFER (XPath: RAWSpinOffer/OFheader) 1-1
<b>payment</b>	payment details for payment all in one (XPath: RAWSpinOffer/terms/payment) 0-5 - note: <i>excluded the case of offers, this set of data is alternative to insPayment, it can be iterated to specify alternative terms of payment (e.g.: 60 days or 30 days with 3% discount)</i>
<b>rawMnfrOperation</b>	details of a manufacturing operation on raw material used for manufacturing a yarn product (XPath: RAWSpinOffer/RSOFbody/RSOFitem/rawMnfrOperation) 0-9
<b>refDoc</b>	identification of a document and of an item thereof, to which the message makes reference (XPath: RAWSpinOffer/RSOFbody/RSOFitem/refDoc) 1-1 - note: <i>reference to the line of the corresponding Request for Offer</i> (XPath: RAWSpinOffer/RSOFbody/RSOFitem/rawMnfrOperation/refDoc) 0-1 (XPath: RAWSpinOffer/OFheader/refDoc) 1-9 - note: <i>reference to the Request for Offer</i> (XPath: RAWSpinOffer/RSOFbody/RSOFitem/yarnMnfrOperation/refDoc) 0-1 - note: <i>here a Process Sheet transmitted to the Subcontractor can be referenced</i>
<b>RSOFbody</b>	body of the document OFFER OF SPINNING (XPath: RAWSpinOffer/RSOFbody) 1-1
<b>RSOFitem</b>	line of the document OFFER OF SPINNING (XPath: RAWSpinOffer/RSOFbody/RSOFitem) 1-unbounded
<b>subContractor</b>	details of the Sub-contractor - base type: Nad, (XPath: RAWSpinOffer/OFheader/subContractor) 1-1
<b>supplier</b>	details of the Supplier

	- base type: Nad, (XPath: RAWSpinOffer/OFheader/supplier) 1-1
<b>terms</b>	details of the commercial obligations for payment and delivery (XPath: RAWSpinOffer/terms) 0-1
<b>thirdParty</b>	details of the Third Party, different from Buyer or Supplier - base type: Nad, (XPath: RAWSpinOffer/RSOFbody/RSOFitem/thirdParty) 0-1
<b>trade</b>	general terms of trade for the specified supply (XPath: RAWSpinOffer/terms/trade) 0-1
<b>transInfo</b>	details of transport: mode, carrier and delivery place (XPath: RAWSpinOffer/terms/transInfo) 0-1
<b>yarnCompos</b>	fibrous composition of a yarn product (XPath: RAWSpinOffer/RSOFbody/RSOFitem/yarnCompos) 0-1
<b>yarnMachineSpecs</b>	technical specifications of a machine used in an operation of a work cycle for yarn (type and settings) (XPath: RAWSpinOffer/RSOFbody/RSOFitem/yarnMnfrOperation/yarnMachineSpecs) 0-9
<b>yarnMnfrOperation</b>	details of a manufacturing operation used for manufacturing a yarn product (XPath: RAWSpinOffer/RSOFbody/RSOFitem/yarnMnfrOperation) 1-9
<b>yarnSpecs</b>	technical properties of a yarn product linked to an operation of the sub-contracted production of yarn or to the purchas of yarn (XPath: RAWSpinOffer/RSOFbody/RSOFitem/yarnSpecs) 0-9

## 2.2.2 Simple elements (Basic Business Information Entities)

Simple elements are those elements whose content is characterized by a data type plus a domain of possible values. Simple elements are alphabetically ordered.

<b>AC_amount</b>	amount of an Allowance or Charge - base type: decimal, fraction digits: 2, (XPath: RAWSpinOffer/terms/allowanceCharge/AC_amount) 1-1
<b>AC_category</b>	coded specification of an Allowance or Charge - base type: string, cod. table: T41 <a href="http://www.moda-ml.net/moda-ml/repository/codelist/v2013-1/gc_T41.xml">http://www.moda-ml.net/moda-ml/repository/codelist/v2013-1/gc_T41.xml</a> (XPath: RAWSpinOffer/terms/allowanceCharge/AC_category) 1-1
<b>AC_categoryText</b>	free text description of an Allowance or Charge - base type: string, max length: 70, (XPath: RAWSpinOffer/terms/allowanceCharge/AC_categoryText) 1-1
<b>AC_percent</b>	amount of an Allowance or Charge as a percentage - base type: decimal, max inclusive: 100, fraction digits: 2, (XPath: RAWSpinOffer/terms/allowanceCharge/AC_percent) 1-1
<b>@act</b>	action performed by the present line upon the referenced document line - base type: string, cod. table: NT5 <a href="http://www.moda-ml.net/moda-ml/repository/codelist/v2013-1/gc_NT5.xml">http://www.moda-ml.net/moda-ml/repository/codelist/v2013-1/gc_NT5.xml</a> (XPath: RAWSpinOffer/RSOFbody/RSOFitem/@act) [Required]
<b>@application</b>	force or similar condition (e.g. no. of revolutions) applied in a test as specified within the standard - base type: string, max length: 15,

	<p>(XPath: RAWSpinOffer/RSOFbody/RSOFitem/yarnSpecs/specValue/@application) [Optional]</p> <p>(XPath: RAWSpinOffer/RSOFbody/RSOFitem/yarnSpecs/experimValue/@application) [Optional]</p> <p>(XPath: RAWSpinOffer/RSOFbody/RSOFitem/yarnMnfrOperation/yarnMachineSpecs/specValue/@application) [Optional]</p>
carrier	<p>identification of the transport carrier</p> <p>- base type: string, max length: 40,</p> <p>(XPath: RAWSpinOffer/terms/transInfo/carrier) 0-1</p>
city	<p>name of the city (town, village)</p> <p>- base type: string, max length: 40,</p> <p>(XPath: RAWSpinOffer/OFheader/buyer/city) 0-1</p> <p>(XPath: RAWSpinOffer/RSOFbody/RSOFitem/thirdParty/city) 0-1</p> <p>(XPath: RAWSpinOffer/OFheader/supplier/city) 0-1</p> <p>(XPath: RAWSpinOffer/OFheader/subContractor/city) 0-1</p>
@codeList	<p>it specifies the URL where the list of codes used to make an instance of the element can be found</p> <p>- base type: string, max length: 255,</p> <p>(XPath: RAWSpinOffer/RSOFbody/RSOFitem/rawMnfrOperation/note/@codeList) [Optional]</p> <p>- nota: <i>must be used to provide (URL) the list of codes used in "noteLabel"</i></p> <p>(XPath: RAWSpinOffer/RSOFbody/RSOFitem/note/@codeList) [Optional]</p> <p>- nota: <i>must be used to provide (URL) the list of codes used in "noteLabel"</i></p> <p>(XPath: RAWSpinOffer/OFheader/note/@codeList) [Optional]</p> <p>- nota: <i>must be used to provide (URL) the list of codes used in "noteLabel"</i></p> <p>(XPath: RAWSpinOffer/terms/allowanceCharge/dtScheme/legalRef/@codeList) [Required]</p> <p>(XPath: RAWSpinOffer/terms/allowanceCharge/dtScheme/note/@codeList) [Optional]</p> <p>- nota: <i>must be used to provide (URL) the list of codes used in "noteLabel"</i></p> <p>(XPath: RAWSpinOffer/RSOFbody/RSOFitem/yarnMnfrOperation/note/@codeList) [Optional]</p> <p>- nota: <i>must be used to provide (URL) the list of codes used in "noteLabel"</i></p>
country	<p>code of the nation</p> <p>- base type: string, cod. table: T10</p> <p><a href="http://www.moda-ml.net/moda-ml/repository/codelist/v2013-1/gc_T10.xml">http://www.moda-ml.net/moda-ml/repository/codelist/v2013-1/gc_T10.xml</a></p> <p>(XPath: RAWSpinOffer/OFheader/supplier/country) 0-1</p> <p>(XPath: RAWSpinOffer/OFheader/subContractor/country) 0-1</p> <p>(XPath: RAWSpinOffer/RSOFbody/RSOFitem/thirdParty/country) 0-1</p> <p>(XPath: RAWSpinOffer/OFheader/buyer/country) 0-1</p>
@CV	<p>coefficient of variation (CV) of a measurement</p> <p>- base type: decimal,</p> <p>(XPath: RAWSpinOffer/RSOFbody/RSOFitem/yarnMnfrOperation/yarnMachineSpecs/specValue/@CV) [Optional]</p> <p>(XPath: RAWSpinOffer/RSOFbody/RSOFitem/yarnSpecs/specValue/@CV) [Optional]</p>
@dateForm	<p>format used for the date</p> <p>- base type: string, cod. table: NT29</p> <p><a href="http://www.moda-ml.net/moda-ml/repository/codelist/v2013-1/gc_NT29.xml">http://www.moda-ml.net/moda-ml/repository/codelist/v2013-1/gc_NT29.xml</a></p> <p>(XPath: RAWSpinOffer/OFheader/validityStart/@dateForm) [Optional]</p> <p>(XPath: RAWSpinOffer/RSOFbody/RSOFitem/rawMnfrOperation/refDoc/docDate/@dateForm) [Optional]</p>

	<p>(XPath: RAWSpinOffer/OFheader/msgDate/@dateForm) [Optional]  (XPath: RAWSpinOffer/OFheader/validityEnd/@dateForm) [Optional]  (XPath: RAWSpinOffer/OFheader/refDoc/docDate/@dateForm) [Optional]  (XPath: RAWSpinOffer/RSOFbody/RSOFitem/deliveryDate/@dateForm) [Optional]  (XPath: RAWSpinOffer/RSOFbody/RSOFitem/notBeforeDate/@dateForm) [Optional]  (XPath: RAWSpinOffer/RSOFbody/RSOFitem/refDoc/docDate/@dateForm) [Optional]  (XPath: RAWSpinOffer/RSOFbody/RSOFitem/yarnMnfrOperation/refDoc/docDate/@dateForm) [Optional]</p>
deliveryDate	<p>date of delivery of goods, requested or promised in the purchase process, according to one of the patterns YYYY-MM-DD, YYYY-MM-DD:HH-MM or YYYY-WW.  - base type: string,  (XPath: RAWSpinOffer/RSOFbody/RSOFitem/deliveryDate) 1-1</p>
deliveryPlace	<p>place of delivery of goods, ultimate or related to a given leg  - base type: string, max length: 40,  (XPath: RAWSpinOffer/terms/transInfo/deliveryPlace) 0-1</p>
dept	<p>name or code of a contact department within a Party  - base type: string, max length: 40,  (XPath: RAWSpinOffer/OFheader/subContractor/dept) 0-1  (XPath: RAWSpinOffer/OFheader/buyer/dept) 0-1  (XPath: RAWSpinOffer/RSOFbody/RSOFitem/thirdParty/dept) 0-1  (XPath: RAWSpinOffer/OFheader/supplier/dept) 0-1</p>
docDate	<p>date of issue of the referenced document, according to one of the patterns YYYY-MM-DD, YYYY-MM-DD:HH-MM or YYYY-WW.  - base type: string,  (XPath: RAWSpinOffer/RSOFbody/RSOFitem/yarnMnfrOperation/refDoc/docDate) 0-1  (XPath: RAWSpinOffer/RSOFbody/RSOFitem/refDoc/docDate) 0-1  (XPath: RAWSpinOffer/OFheader/refDoc/docDate) 0-1  (XPath: RAWSpinOffer/RSOFbody/RSOFitem/rawMnfrOperation/refDoc/docDate) 0-1</p>
docID	<p>identification number of the referenced document SINCE 2008-1 ITS USE IN THE HEADER IS DISCOURAGED (REPLACED BY msgID)  - base type: string, max length: 80,  (XPath: RAWSpinOffer/RSOFbody/RSOFitem/refDoc/docID) 1-2  (XPath: RAWSpinOffer/RSOFbody/RSOFitem/yarnMnfrOperation/refDoc/docID) 1-2  (XPath: RAWSpinOffer/OFheader/refDoc/docID) 1-2  (XPath: RAWSpinOffer/RSOFbody/RSOFitem/rawMnfrOperation/refDoc/docID) 1-2  (XPath: RAWSpinOffer/OFheader/docID) 0-1</p>
@docType	<p>type or class to which the referenced document belongs  - base type: string, cod. table: T21  <a href="http://www.moda-ml.net/moda-ml/repository/codelist/v2013-1/gc_T21.xml">http://www.moda-ml.net/moda-ml/repository/codelist/v2013-1/gc_T21.xml</a>  (XPath: RAWSpinOffer/RSOFbody/RSOFitem/yarnMnfrOperation/refDoc/@docType) [Required]  (XPath: RAWSpinOffer/OFheader/refDoc/@docType) [Required]  (XPath: RAWSpinOffer/RSOFbody/RSOFitem/rawMnfrOperation/refDoc/@docType) [Required]  (XPath: RAWSpinOffer/RSOFbody/RSOFitem/refDoc/@docType) [Required]</p>
@email	<p>electronic mail address of the contact person within a Party  - base type: string, max length: 80,  (XPath: RAWSpinOffer/RSOFbody/RSOFitem/thirdParty/person/@email) [Optional]</p>

	(XPath: RAWSpinOffer/OFheader/subContractor/person/@email) [Optional] (XPath: RAWSpinOffer/OFheader/supplier/person/@email) [Optional] (XPath: RAWSpinOffer/OFheader/buyer/person/@email) [Optional]
experimValue	experimental value of the measurement - base type: decimal, (XPath: RAWSpinOffer/RSOFbody/RSOFitem/yarnSpecs/experimValue) 0-1
@fax	fax number of the contact person within a Party - base type: string, max length: 35, (XPath: RAWSpinOffer/OFheader/supplier/person/@fax) [Optional] (XPath: RAWSpinOffer/RSOFbody/RSOFitem/thirdParty/person/@fax) [Optional] (XPath: RAWSpinOffer/OFheader/subContractor/person/@fax) [Optional] (XPath: RAWSpinOffer/OFheader/buyer/person/@fax) [Optional]
@fibre	type of fibre used in a textile product - base type: string, cod. table: T19 <a href="http://www.moda-ml.net/moda-ml/repository/codelist/v2013-1/gc_T19.xml">http://www.moda-ml.net/moda-ml/repository/codelist/v2013-1/gc_T19.xml</a> (XPath: RAWSpinOffer/RSOFbody/RSOFitem/yarnCompos/percCompos/@fibre) [Required]
@finDiscount	financial discount applied for payment by the date specified - base type: decimal, min inclusive: 0, max inclusive: 100, fraction digits: 2, (XPath: RAWSpinOffer/terms/payment/@finDiscount) [Optional]
@finSurcharge	financial surcharge applied for payment after the date specified - base type: decimal, min inclusive: 0, max inclusive: 100, fraction digits: 2, (XPath: RAWSpinOffer/terms/payment/@finSurcharge) [Optional]
grossWeight	the gross weight of the overall goods supply, declared for transport or customs purpose - base type: decimal, min inclusive: 0, fraction digits: 2, (XPath: RAWSpinOffer/terms/transInfo/grossWeight) 0-1
id	primary identification code of a Party; it is recommended the format: nation code (ISO 3166) + VAT identification number (11 crt), with the qualifier "numberingOrg"= MF - base type: string, max length: 15, (XPath: RAWSpinOffer/OFheader/buyer/id) 1-1 (XPath: RAWSpinOffer/RSOFbody/RSOFitem/thirdParty/id) 1-1 (XPath: RAWSpinOffer/OFheader/subContractor/id) 1-1 (XPath: RAWSpinOffer/OFheader/supplier/id) 1-1
@idCO	primary identification code of the Party executing the test; it is recommended the format: nation code (ISO 3166) + VAT identification number (11 crt). - base type: string, max length: 15, (XPath: RAWSpinOffer/RSOFbody/RSOFitem/yarnSpecs/experimValue/@idCO) [Optional]
incoTerm	specification of the terms of trade (INCOTERMS) - base type: string, cod. table: T3 <a href="http://www.moda-ml.net/moda-ml/repository/codelist/v2013-1/gc_T3.xml">http://www.moda-ml.net/moda-ml/repository/codelist/v2013-1/gc_T3.xml</a> (XPath: RAWSpinOffer/terms/trade/incoTerm) 1-1
incoTermText	free text specifying the terms of trade (incoterm, location) - base type: string, max length: 70, (XPath: RAWSpinOffer/terms/trade/incoTermText) 1-1
itemID	number of the line/item of the referenced document - base type: string, max length: 6, (XPath: RAWSpinOffer/OFheader/refDoc/itemID) 0-1

	<p>(XPath: RAWSpinOffer/RSOFbody/RSOFitem/rawMnfrOperation/refDoc/itemID) 0-1</p> <p>(XPath: RAWSpinOffer/RSOFbody/RSOFitem/refDoc/itemID) 0-1</p> <p>(XPath: RAWSpinOffer/RSOFbody/RSOFitem/yarnMnfrOperation/refDoc/itemID) 0-1</p>
jobName	<p>description of the elementary job</p> <p>- base type: string, max length: 40,</p> <p>(XPath: RAWSpinOffer/RSOFbody/RSOFitem/yarnMnfrOperation/jobName) 1-1</p> <p>(XPath: RAWSpinOffer/RSOFbody/RSOFitem/rawMnfrOperation/jobName) 1-1</p>
legalName	<p>legal name of a Party</p> <p>- base type: string, max length: 80,</p> <p>(XPath: RAWSpinOffer/OFheader/supplier/legalName) 0-1</p> <p>(XPath: RAWSpinOffer/OFheader/subContractor/legalName) 0-1</p> <p>(XPath: RAWSpinOffer/RSOFbody/RSOFitem/thirdParty/legalName) 0-1</p> <p>(XPath: RAWSpinOffer/OFheader/buyer/legalName) 0-1</p>
legalRef	<p>legal reference of the duty or tax or fee category</p> <p>- base type: string,</p> <p>(XPath: RAWSpinOffer/terms/allowanceCharge/dtScheme/legalRef) 0-1</p>
lineN	<p>number of the line item of the present message (xml document)</p> <p>- base type: positiveInteger, min inclusive: 1, max inclusive: 9999,</p> <p>(XPath: RAWSpinOffer/RSOFbody/RSOFitem/lineN) 1-1</p>
location	<p>specification of a location</p> <p>- base type: string, max length: 40,</p> <p>(XPath: RAWSpinOffer/terms/trade/location) 0-1</p> <p>- note: <i>place to which the INCOTERM applies</i></p>
@logo	<p>company logo (URL of the image jpeg or gif). It is recommended that the width of the image does not exceed 640 pixel.</p> <p>- base type: string, max length: 255,</p> <p>(XPath: RAWSpinOffer/OFheader/supplier/@logo) [Optional]</p> <p>(XPath: RAWSpinOffer/OFheader/buyer/@logo) [Optional]</p>
@LRI	<p>attribute usable to format a string according to a customized User rule (local rule)</p> <p>- base type: string, cod. table: NT3</p> <p><a href="http://www.moda-ml.net/moda-ml/repository/codelist/v2013-1/gc_NT3.xml">http://www.moda-ml.net/moda-ml/repository/codelist/v2013-1/gc_NT3.xml</a></p> <p>(XPath: RAWSpinOffer/terms/trade/location/@LRI) [Optional]</p>
@method	<p>standard protocol or method employed in a test to evaluate a characteristic or a parameter</p> <p>- base type: string, max length: 25,</p> <p>(XPath: RAWSpinOffer/RSOFbody/RSOFitem/yarnMnfrOperation/yarnMachineSpecs/specValue/@method) [Optional]</p> <p>(XPath: RAWSpinOffer/RSOFbody/RSOFitem/yarnSpecs/specValue/@method) [Optional]</p> <p>(XPath: RAWSpinOffer/RSOFbody/RSOFitem/yarnSpecs/experimValue/@method) [Optional]</p> <p>- nota: <i>we recommend the specification of the method of measure only when different from the one of the MODA-ML coding system</i></p>
msgDate	<p>date of issue of the present message (xml document), according to one of the patterns YYYY-MM-DD, YYYY-MM-DD:HH-MM or YYYY-WW.</p> <p>- base type: string,</p> <p>(XPath: RAWSpinOffer/OFheader/msgDate) 1-1</p>
@msgfunction	<p>function performed by the present message with regards to the transmission</p>



	<p>- base type: string, cod. table: NT18  <a href="http://www.moda-ml.net/moda-ml/repository/codelist/v2013-1/gc_NT18.xml">http://www.moda-ml.net/moda-ml/repository/codelist/v2013-1/gc_NT18.xml</a>  (XPath: RAWSpinOffer/@msgfunction) [Optional] [Default= OR]</p>
msgID	<p>key identifier of the document in the information system of the issuing Party  - base type: string, max length: 35,  (XPath: RAWSpinOffer/OFheader/msgID) 0-1</p>
msgN	<p>identification number given to the message (xml document) by its issuer  - base type: string, max length: 35,  (XPath: RAWSpinOffer/OFheader/msgN) 1-1</p>
netWeight	<p>the net weight of the overall goods supply, declared for transport or customs purpose  - base type: decimal, min inclusive: 0, fraction digits: 2,  (XPath: RAWSpinOffer/terms/transInfo/netWeight) 0-1</p>
notBeforeDate	<p>earliest date possible to begin an activity, according to one of the patterns YYYY-MM-DD, YYYY-MM-DD:HH-MM or YYYY-WW.  - base type: string,  (XPath: RAWSpinOffer/RSOFFbody/RSOFFitem/notBeforeDate) 0-1</p>
note	<p>free text or structured (computer processing) note. For note structuring use the attributes "noteLabel" and "codelist"  - base type: string, max length: 350,  (XPath: RAWSpinOffer/RSOFFbody/RSOFFitem/rawMnfrOperation/note) 0-19  (XPath: RAWSpinOffer/RSOFFbody/RSOFFitem/yarnMnfrOperation/note) 0-19  (XPath: RAWSpinOffer/RSOFFbody/RSOFFitem/note) 0-19  (XPath: RAWSpinOffer/terms/allowanceCharge/dtScheme/note) 0-19  (XPath: RAWSpinOffer/OFheader/note) 0-19</p>
@noteLabel	<p>subject qualifier of a note  - base type: string, max length: 35,  (XPath: RAWSpinOffer/OFheader/note/@noteLabel) [Optional]  - nota: <i>must be used to qualify the subject of the note</i>  (XPath: RAWSpinOffer/RSOFFbody/RSOFFitem/yarnMnfrOperation/note/@noteLabel) [Optional]  - nota: <i>must be used to qualify the subject of the note</i>  (XPath: RAWSpinOffer/RSOFFbody/RSOFFitem/note/@noteLabel) [Optional]  - nota: <i>must be used to qualify the subject of the note</i>  (XPath: RAWSpinOffer/RSOFFbody/RSOFFitem/rawMnfrOperation/note/@noteLabel) [Optional]  - nota: <i>must be used to qualify the subject of the note</i>  (XPath: RAWSpinOffer/terms/allowanceCharge/dtScheme/note/@noteLabel) [Optional]  - nota: <i>must be used to qualify the subject of the note</i></p>
@numberingOrg	<p>code specifying the organisation who has created or owns the coding or numbering system  - base type: string, cod. table: NT6  <a href="http://www.moda-ml.net/moda-ml/repository/codelist/v2013-1/gc_NT6.xml">http://www.moda-ml.net/moda-ml/repository/codelist/v2013-1/gc_NT6.xml</a>  (XPath: RAWSpinOffer/RSOFFbody/RSOFFitem/rawMnfrOperation/note/@numberingOrg) [Optional]  (XPath: RAWSpinOffer/RSOFFbody/RSOFFitem/thirdParty/id/@numberingOrg) [Optional]  (XPath: RAWSpinOffer/RSOFFbody/RSOFFitem/rawMnfrOperation/refDoc/docID/@numberingOrg) [Optional]  - nota: <i>here can be specified whose document numbering is used (e.g.: Client, Supplier, ..)</i></p>

	<p>(XPath: RAWSpinOffer/RSOFbody/RSOFitem/yarnMnfrOperation/note/@numberingOrg) [Optional]</p> <p>(XPath: RAWSpinOffer/OFheader/buyer/id/@numberingOrg) [Optional]</p> <p>(XPath: RAWSpinOffer/OFheader/refDoc/docID/@numberingOrg) [Optional]</p> <p>- nota: here can be specified whose document numbering is used (e.g.: Client, Supplier, ..)</p> <p>(XPath: RAWSpinOffer/OFheader/note/@numberingOrg) [Optional]</p> <p>(XPath: RAWSpinOffer/RSOFbody/RSOFitem/yarnMnfrOperation/refDoc/docID/@numberingOrg) [Optional]</p> <p>- nota: here can be specified whose document numbering is used (e.g.: Client, Supplier, ..)</p> <p>(XPath: RAWSpinOffer/RSOFbody/RSOFitem/refDoc/docID/@numberingOrg) [Optional]</p> <p>- nota: here can be specified whose document numbering is used (e.g.: Client, Supplier, ..)</p> <p>(XPath: RAWSpinOffer/RSOFbody/RSOFitem/note/@numberingOrg) [Optional]</p> <p>(XPath: RAWSpinOffer/terms/allowanceCharge/dtScheme/note/@numberingOrg) [Optional]</p> <p>(XPath: RAWSpinOffer/OFheader/subContractor/id/@numberingOrg) [Optional]</p> <p>(XPath: RAWSpinOffer/OFheader/docID/@numberingOrg) [Optional]</p> <p>- nota: here can be specified whose document numbering is used (e.g.: Client, Supplier, ..)</p> <p>(XPath: RAWSpinOffer/OFheader/supplier/id/@numberingOrg) [Optional]</p>
@part	<p>percent fraction of a total payment</p> <p>- base type: decimal, min inclusive: 1, max inclusive: 99, fraction digits: 2,</p> <p>(XPath: RAWSpinOffer/terms/insPayment/@part) [Required]</p> <p>- nota: here the % value of each installment must be indicated</p>
payMode	<p>way or means of payment</p> <p>- base type: string, cod. table: T2</p> <p><a href="http://www.moda-ml.net/moda-ml/repository/codelist/v2013-1/gc_T2.xml">http://www.moda-ml.net/moda-ml/repository/codelist/v2013-1/gc_T2.xml</a></p> <p>(XPath: RAWSpinOffer/terms/payment/payMode) 0-1</p> <p>(XPath: RAWSpinOffer/terms/insPayment/payMode) 0-1</p>
payTerm	<p>code specifying the terms or time by which the payment must be done</p> <p>- base type: string, cod. table: T1</p> <p><a href="http://www.moda-ml.net/moda-ml/repository/codelist/v2013-1/gc_T1.xml">http://www.moda-ml.net/moda-ml/repository/codelist/v2013-1/gc_T1.xml</a></p> <p>(XPath: RAWSpinOffer/terms/insPayment/payTerm) 1-1</p> <p>(XPath: RAWSpinOffer/terms/payment/payTerm) 1-1</p>
payTermText	<p>free text specifying the terms by which the payment must be done (time/mode or means)</p> <p>- base type: string, max length: 40,</p> <p>(XPath: RAWSpinOffer/terms/payment/payTermText) 1-1</p> <p>(XPath: RAWSpinOffer/terms/insPayment/payTermText) 1-1</p>
pcTolerance	<p>percent deviation tolerated on the value of a measurement (it must have a plus or minus sign)</p> <p>- base type: decimal, min inclusive: 0, max inclusive: 100, total digits: 2,</p> <p>(XPath: RAWSpinOffer/RSOFbody/RSOFitem/yarnMnfrOperation/yarnMachineSpecs/pcTolerance) 0-2</p> <p>(XPath: RAWSpinOffer/RSOFbody/RSOFitem/yarnSpecs/pcTolerance) 0-2</p>
percCompos	<p>fiber rate in the product composition</p> <p>- base type: decimal, min inclusive: 0, max inclusive: 100, fraction digits: 2,</p>



	(XPath: RAWSpinOffer/RSOFbody/RSOFitem/yarnCompos/percCompos) 1-9
person	name of the contact person within a Party - base type: string, max length: 40, (XPath: RAWSpinOffer/OFheader/buyer/person) 0-1 (XPath: RAWSpinOffer/RSOFbody/RSOFitem/thirdParty/person) 0-1 (XPath: RAWSpinOffer/OFheader/subContractor/person) 0-1 (XPath: RAWSpinOffer/OFheader/supplier/person) 0-1
@phone	phone number of the contact person within a Party - base type: string, max length: 35, (XPath: RAWSpinOffer/OFheader/buyer/person/@phone) [Optional] (XPath: RAWSpinOffer/OFheader/subContractor/person/@phone) [Optional] (XPath: RAWSpinOffer/OFheader/supplier/person/@phone) [Optional] (XPath: RAWSpinOffer/RSOFbody/RSOFitem/thirdParty/person/@phone) [Optional]
postCode	code defining the postal zone - base type: string, max length: 10, (XPath: RAWSpinOffer/OFheader/subContractor/postCode) 0-1 (XPath: RAWSpinOffer/RSOFbody/RSOFitem/thirdParty/postCode) 0-1 (XPath: RAWSpinOffer/OFheader/supplier/postCode) 0-1 (XPath: RAWSpinOffer/OFheader/buyer/postCode) 0-1
price	unit price of the article, object or service specified - base type: decimal, min inclusive: 0, fraction digits: 2, (XPath: RAWSpinOffer/RSOFbody/RSOFitem/price) 1-1
@priceQualifier	type of price with reference to discount and taxes - base type: string, cod. table: NT20 <a href="http://www.moda-ml.net/moda-ml/repository/codelist/v2013-1/gc_NT20.xml">http://www.moda-ml.net/moda-ml/repository/codelist/v2013-1/gc_NT20.xml</a> (XPath: RAWSpinOffer/RSOFbody/RSOFitem/price/@priceQualifier) [Optional] [Default= NET]
qty	net quantity of the article or object correlated, qualified by the function of the document (ordering, delivering, ..) and by the context - base type: decimal, min inclusive: 0, fraction digits: 2, (XPath: RAWSpinOffer/RSOFbody/RSOFitem/qty) 1-2
rawJob	operation of a work cycle for raw material - base type: string, cod. table: T200 <a href="http://www.moda-ml.net/moda-ml/repository/codelist/v2013-1/gc_T200.xml">http://www.moda-ml.net/moda-ml/repository/codelist/v2013-1/gc_T200.xml</a> (XPath: RAWSpinOffer/RSOFbody/RSOFitem/rawMnfrOperation/rawJob) 1-1
@role	Third Party role qualifier - base type: string, cod. table: NT2 <a href="http://www.moda-ml.net/moda-ml/repository/codelist/v2013-1/gc_NT2.xml">http://www.moda-ml.net/moda-ml/repository/codelist/v2013-1/gc_NT2.xml</a> (XPath: RAWSpinOffer/RSOFbody/RSOFitem/thirdParty/@role) [Required]
season	sale season; defined as: season (1 crt) + year (4 crt) - season: S/S=1 A/W=2 Spring=3 Summer=4 Autumn=5 Winter=6: for more than four seasons use alphabetic sequence: 1st season=A 2nd season=B etc.etc. - base type: string, max length: 15, (XPath: RAWSpinOffer/OFheader/season) 0-1 (XPath: RAWSpinOffer/RSOFbody/RSOFitem/yarnMnfrOperation/refDoc/season) 0-1 - note: here indicates the season to which the referenced document belongs (XPath: RAWSpinOffer/RSOFbody/RSOFitem/refDoc/season) 0-1 - note: here indicates the season to which the referenced document belongs (XPath: RAWSpinOffer/OFheader/refDoc/season) 0-1

	<p>- note: here indicates the season to which the referenced document belongs (XPath: RAWSpinOffer/RSOFbody/RSOFitem/rawMnfrOperation/refDoc/season) 0-1</p> <p>- note: here indicates the season to which the referenced document belongs</p>
@sender	<p>qualifier that specifies the Party issuing of the document</p> <p>- base type: boolean, (XPath: RAWSpinOffer/OFheader/subContractor/@sender) [Optional]</p> <p>- nota: This attribute is mandatory when the STYLESHEET must be produced (XPath: RAWSpinOffer/RSOFbody/RSOFitem/thirdParty/@sender) [Optional]</p> <p>- nota: This attribute is mandatory when the STYLESHEET must be produced (XPath: RAWSpinOffer/OFheader/supplier/@sender) [Optional]</p> <p>- nota: This attribute is mandatory when the STYLESHEET must be produced (XPath: RAWSpinOffer/OFheader/buyer/@sender) [Optional]</p> <p>- nota: This attribute is mandatory when the STYLESHEET must be produced</p>
@source	<p>party who has provided the data</p> <p>- base type: string, cod. table: NT12 <a href="http://www.moda-ml.net/moda-ml/repository/codelist/v2013-1/gc_NT12.xml">http://www.moda-ml.net/moda-ml/repository/codelist/v2013-1/gc_NT12.xml</a> (XPath: RAWSpinOffer/RSOFbody/RSOFitem/yarnMnfrOperation/yarnMachineSpecs/specValue/@source) [Optional]</p> <p>(XPath: RAWSpinOffer/RSOFbody/RSOFitem/yarnSpecs/specValue/@source) [Optional]</p>
specValue	<p>value requested for a property or a parameter that is measured</p> <p>- base type: decimal, (XPath: RAWSpinOffer/RSOFbody/RSOFitem/yarnMnfrOperation/yarnMachineSpecs/specValue) 0-1 (XPath: RAWSpinOffer/RSOFbody/RSOFitem/yarnSpecs/specValue) 0-1</p>
street	<p>street and building number identifying a location</p> <p>- base type: string, max length: 80, (XPath: RAWSpinOffer/OFheader/supplier/street) 0-1 (XPath: RAWSpinOffer/OFheader/subContractor/street) 0-1 (XPath: RAWSpinOffer/OFheader/buyer/street) 0-1 (XPath: RAWSpinOffer/RSOFbody/RSOFitem/thirdParty/street) 0-1</p>
subCountry	<p>short name or code of the sub-country entity</p> <p>- base type: string, max length: 9, (XPath: RAWSpinOffer/OFheader/buyer/subCountry) 0-1 (XPath: RAWSpinOffer/RSOFbody/RSOFitem/thirdParty/subCountry) 0-1 (XPath: RAWSpinOffer/OFheader/supplier/subCountry) 0-1 (XPath: RAWSpinOffer/OFheader/subContractor/subCountry) 0-1</p>
taxCategory	<p>duty or tax or fee category</p> <p>- base type: string, cod. table: T62 <a href="http://www.moda-ml.net/moda-ml/repository/codelist/v2013-1/gc_T62.xml">http://www.moda-ml.net/moda-ml/repository/codelist/v2013-1/gc_T62.xml</a> (XPath: RAWSpinOffer/terms/allowanceCharge/dtScheme/taxCategory) 0-1</p>
taxRate	<p>duty or tax or fee percent rate</p> <p>- base type: string, (XPath: RAWSpinOffer/terms/allowanceCharge/dtScheme/taxRate) 0-1</p>
@taxType	<p>duty or tax or fee type</p> <p>- base type: string, cod. table: T61 <a href="http://www.moda-ml.net/moda-ml/repository/codelist/v2013-1/gc_T61.xml">http://www.moda-ml.net/moda-ml/repository/codelist/v2013-1/gc_T61.xml</a> (XPath: RAWSpinOffer/terms/allowanceCharge/dtScheme/@taxType) [Required]</p>

tolerance	<p>deviation tolerated on the value of a measurement (it must have a plus or minus sign)</p> <ul style="list-style-type: none"> <li>- base type: decimal,</li> </ul> <p>(XPath: RAWSpinOffer/RSOFFbody/RSOFFitem/yarnMnfrOperation/yarnMachineSpecs/tolerance) 0-2  (XPath: RAWSpinOffer/RSOFFbody/RSOFFitem/yarnSpecs/tolerance) 0-2</p>
transCondition	<p>special condition of transport or special service requested to the Forwarder</p> <ul style="list-style-type: none"> <li>- base type: string, cod. table: T38</li> </ul> <p><a href="http://www.moda-ml.net/moda-ml/repository/codelist/v2013-1/gc_T38.xml">http://www.moda-ml.net/moda-ml/repository/codelist/v2013-1/gc_T38.xml</a>  (XPath: RAWSpinOffer/terms/transInfo/transCondition) 0-3</p>
transConditionText	<p>free text description of the special condition of transport or special service requested to the Forwarder</p> <ul style="list-style-type: none"> <li>- base type: string, max length: 100,</li> </ul> <p>(XPath: RAWSpinOffer/terms/transInfo/transConditionText) 0-1</p>
transMeans	<p>means of transport, in general or referred to a specific leg</p> <ul style="list-style-type: none"> <li>- base type: string, cod. table: T40</li> </ul> <p><a href="http://www.moda-ml.net/moda-ml/repository/codelist/v2013-1/gc_T40.xml">http://www.moda-ml.net/moda-ml/repository/codelist/v2013-1/gc_T40.xml</a>  (XPath: RAWSpinOffer/terms/transInfo/transMeans) 0-1</p>
transMode	<p>way of transport, in general or referred to the specified leg</p> <ul style="list-style-type: none"> <li>- base type: string, cod. table: T8</li> </ul> <p><a href="http://www.moda-ml.net/moda-ml/repository/codelist/v2013-1/gc_T8.xml">http://www.moda-ml.net/moda-ml/repository/codelist/v2013-1/gc_T8.xml</a>  (XPath: RAWSpinOffer/terms/transInfo/transMode) 1-1</p>
@transReason	<p>reason for the transport</p> <ul style="list-style-type: none"> <li>- base type: string, cod. table: NT11</li> </ul> <p><a href="http://www.moda-ml.net/moda-ml/repository/codelist/v2013-1/gc_NT11.xml">http://www.moda-ml.net/moda-ml/repository/codelist/v2013-1/gc_NT11.xml</a>  (XPath: RAWSpinOffer/terms/transInfo/@transReason) [Optional]</p>
@um	<p>specification of the unit of measure</p> <ul style="list-style-type: none"> <li>- base type: string, cod. table: NT7</li> </ul> <p><a href="http://www.moda-ml.net/moda-ml/repository/codelist/v2013-1/gc_NT7.xml">http://www.moda-ml.net/moda-ml/repository/codelist/v2013-1/gc_NT7.xml</a>  (XPath: RAWSpinOffer/RSOFFbody/RSOFFitem/yarnSpecs/experimValue/@um) [Optional]  (XPath: RAWSpinOffer/RSOFFbody/RSOFFitem/yarnSpecs/specValue/@um) [Optional]  (XPath: RAWSpinOffer/terms/transInfo/netWeight/@um) [Required]  (XPath: RAWSpinOffer/terms/transInfo/grossWeight/@um) [Required]  (XPath: RAWSpinOffer/RSOFFbody/RSOFFitem/yarnMnfrOperation/yarnMachineSpecs/specValue/@um) [Optional]  (XPath: RAWSpinOffer/RSOFFbody/RSOFFitem/yarnMnfrOperation/yarnMachineSpecs/pcTolerance/@um) [Optional]</p> <p>- nota: <i>to be used when it has to be soecified if the declared percentage is by weight, volume, etc...</i>  (XPath: RAWSpinOffer/RSOFFbody/RSOFFitem/qty/@um) [Required]  (XPath: RAWSpinOffer/RSOFFbody/RSOFFitem/price/@um) [Optional]</p> <p>- nota: <i>Unit of measure of the product to which the price is referred (price per meter)</i>  (XPath: RAWSpinOffer/RSOFFbody/RSOFFitem/yarnSpecs/tolerance/@um) [Required]  (XPath: RAWSpinOffer/RSOFFbody/RSOFFitem/yarnSpecs/pcTolerance/@um) [Optional]</p> <p>- nota: <i>to be used when it has to be soecified if the declared percentage is by weight, volume, etc...</i>  (XPath: RAWSpinOffer/RSOFFbody/RSOFFitem/yarnMnfrOperation/yarnMachineSpecs/tolerance/@um) [Required]</p>
@useProfile	<p>use profile to which the present document if compliant if it was agreed by the parties. It is suggested a URI with reference to the firms or the URL of the profile.</p> <ul style="list-style-type: none"> <li>- base type: string,</li> </ul>

	(XPath: RAWSpinOffer/@useProfile) [Optional]
validityEnd	date by which the validity ends, according to one of the patterns YYYY-MM-DD, YYYY-MM-DD:HH-MM or YYYY-WW. - base type: string, (XPath: RAWSpinOffer/OFheader/validityEnd) 1-1
validityStart	date by which the validity starts, according to one of the patterns YYYY-MM-DD, YYYY-MM-DD:HH-MM or YYYY-WW. - base type: string, (XPath: RAWSpinOffer/OFheader/validityStart) 0-1
@VAT	VAT rate or code ( deprecated, use dtScheme element ) - base type: string, cod. table: NT16 <a href="http://www.moda-ml.net/moda-ml/repository/codelist/v2013-1/gc_NT16.xml">http://www.moda-ml.net/moda-ml/repository/codelist/v2013-1/gc_NT16.xml</a> (XPath: RAWSpinOffer/RSOFbody/RSOFitem/thirdParty/@VAT) [Optional] (XPath: RAWSpinOffer/RSOFbody/RSOFitem/lineN/@VAT) [Optional] (XPath: RAWSpinOffer/terms/allowanceCharge/@VAT) [Optional]
@version	Dictionary version from which the instance has been created - base type: string, cod. table: NT100 <a href="http://www.moda-ml.net/moda-ml/repository/codelist/v2013-1/gc_NT100.xml">http://www.moda-ml.net/moda-ml/repository/codelist/v2013-1/gc_NT100.xml</a> (XPath: RAWSpinOffer/@version) [Optional] [Default= 2013-1]
yarnChar	physical or mechanical parameter used to define a property of a yarn - base type: string, cod. table: T24 <a href="http://www.moda-ml.net/moda-ml/repository/codelist/v2013-1/gc_T24.xml">http://www.moda-ml.net/moda-ml/repository/codelist/v2013-1/gc_T24.xml</a> (XPath: RAWSpinOffer/RSOFbody/RSOFitem/yarnSpecs/yarnChar) 1-1
yarnCharText	free text describing the physical or mechanical parameter used to define a property of a yarn - base type: string, max length: 40, (XPath: RAWSpinOffer/RSOFbody/RSOFitem/yarnSpecs/yarnCharText) 1-1
yarnJob	operation of a work cycle for yarn - base type: string, cod. table: T201 <a href="http://www.moda-ml.net/moda-ml/repository/codelist/v2013-1/gc_T201.xml">http://www.moda-ml.net/moda-ml/repository/codelist/v2013-1/gc_T201.xml</a> (XPath: RAWSpinOffer/RSOFbody/RSOFitem/yarnMnfrOperation/yarnJob) 1-1
yarnJobTech	operation technology for yarn - base type: string, cod. table: T261 <a href="http://www.moda-ml.net/moda-ml/repository/codelist/v2013-1/gc_T261.xml">http://www.moda-ml.net/moda-ml/repository/codelist/v2013-1/gc_T261.xml</a> (XPath: RAWSpinOffer/RSOFbody/RSOFitem/yarnMnfrOperation/yarnJobTech) 0-1
yarnMachine	machine used in an operation of a work cycle for yarn - base type: string, cod. table: T271 <a href="http://www.moda-ml.net/moda-ml/repository/codelist/v2013-1/gc_T271.xml">http://www.moda-ml.net/moda-ml/repository/codelist/v2013-1/gc_T271.xml</a> (XPath: RAWSpinOffer/RSOFbody/RSOFitem/yarnMnfrOperation/yarnMachine) 0-1
yarnMachineParam	setting parameter of a machine used in an operation of a work cycle for yarn - base type: string, cod. table: T281 <a href="http://www.moda-ml.net/moda-ml/repository/codelist/v2013-1/gc_T281.xml">http://www.moda-ml.net/moda-ml/repository/codelist/v2013-1/gc_T281.xml</a> (XPath: RAWSpinOffer/RSOFbody/RSOFitem/yarnMnfrOperation/yarnMachineSpecs/yarnMachineParam) 1-1
@yarnProcQualifier	type of yarn with reference to the manufacturing process - base type: string, cod. table: NT31 <a href="http://www.moda-ml.net/moda-ml/repository/codelist/v2013-1/gc_NT31.xml">http://www.moda-ml.net/moda-ml/repository/codelist/v2013-1/gc_NT31.xml</a> (XPath: RAWSpinOffer/@yarnProcQualifier) [Required]



## 2.3 Enumeration tables

List of enumeration tables used in the XML document. You can find the corresponding codes at: <http://www.moda-ml.org/moda-ml/imple/moda-ml-2013-1.asp?lingua=en&pag=6>

NT100 - eBIZ Moda-ML version

NT11 - transport causal

NT12 - data source

NT16 - VAT rate or code

NT18 - message function

NT2 - third party qualifier

NT20 - price qualifier

NT29 - format of a date

NT3 - data format

NT31 - yarn family

NT5 - action code

NT6 - coding system owner/issuer

NT7 - unity of measure

T1 - terms of payment

T10 - ISO3166 - Country

T19 - fibre type

T2 - Modes of payment

T200 - type of job on raw material

T201 - type of job on yarn

T21 - type of document

T24 - yarn characteristics type

T261 - type of job technology for yarn

T271 - machine type for yarn operation

T281 - parameter type for yarn operation

T3 - terms of delivery

T38 - transport conditions

T40 - type of transport means

T41 - type of Allowance or Charge

T61 - duty or tax or fee type

T62 - duty or tax or fee category

T8 - Modes of Transport

# Annex A

Representative images of the principal complex elements' structure.

