



<http://www.moda-ml.org>

IMPLEMENTATION GUIDE  
TRANSACTION "TEXTILE DYEING-FINISHING  
OFFER"

Version: 2013-1

Date of release: 18/11/2011

Document code: G061

XML Schema repository:<http://www.moda-ml.org/moda-ml/repository/schema/v2013-1/default.asp>

Guides repository:<http://www.moda-ml.org/moda-ml/repository/guide/v2013-1/default.asp>

Guide filename: G061-MODA-ML-TextileDyeing-finishingOffer.pdf

# 1. BUSINESS DESCRIPTION

## 1.1 Scope

The present guide has been issued to assist the companies of the Textile-Clothing sector in the implementation of the standard XML document type "TEXTILE DYEING/FINISHING OFFER", providing all the instruction required for its use in the context of e-commerce between Subcontractors and their Customers shown in the enclosed diagram

All the rules required for the construction and validation of the document are embedded into the specific XML-Schema, which is detailed in section "Implementation guide".

## 1.2 Generalities

The Offer is used by a Subcontractor to respond to the Request of a Fabric Manufacturer for the dyeing/finishing of a fabric.

The Offer is structured in four levels:

Macro-type of Work offered = document root (7 types of Request)

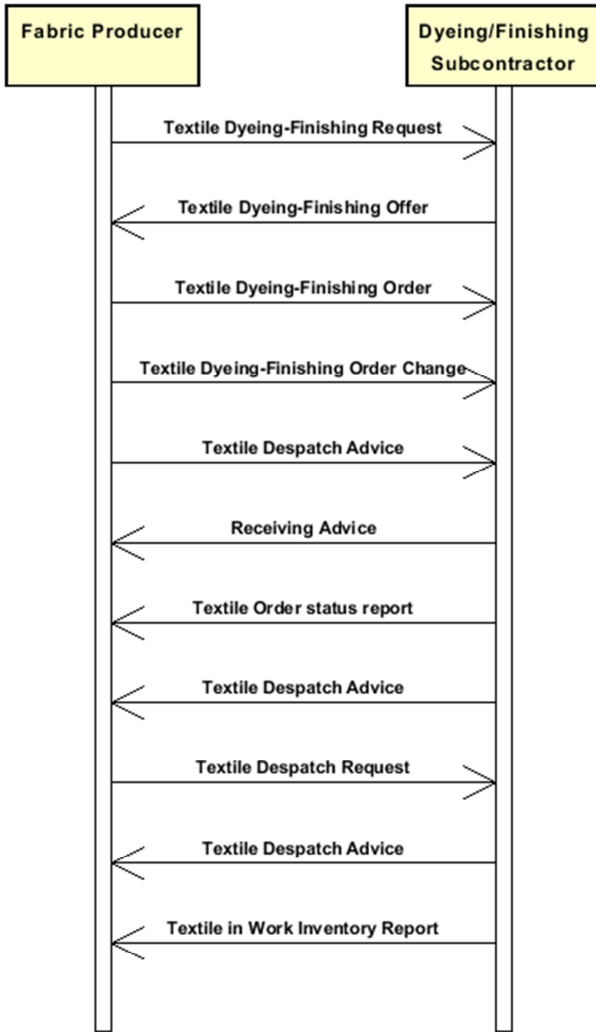
Product Family = document qualifier (type of product with reference to the manufacturing process; e.g.: combed yarn, jacquard weaved fabric, ..)

Product Specifications = "xxxSpecs" (technical characteristics and properties of the product)

Operations offered = "XXXMnfrOperation" (details of the works requested)

Quantities, unit measures and prices must be referred to the third level (Line Item)

## 1.3. Possible scenario



## 2. IMPLEMENTATION GUIDE

### 2.1 General structure of XML document

All the business data that can be exchanged through this class of documents are shown in the following "document structure", that provides a simplified vision of the Schema.

In particular:

- the two numbers following each element define its "cardinality" (minimum and maximum number of occurrences); the minimum equal zero indicates that the element is optional, the minimum greater than zero indicates that is mandatory;
- the bold character denotes the complex elements (aggregates of simple elements) that were built for the sake of functionality and re-usability of some complex informations sets. The child elements in each parent element are easily spotted as "indented";
- the symbol "@" denotes an attribute of the preceding element; here "the usage indicator (optional, required, ...)" is shown in square brackets.

### Structure

#### **TEXDyFinOffer**

*@msgfunction [Optional] [Default= OR]*

*@fabProcQualifier [Required]*

*@version [Optional] [Default= 2013-1]*

*@useProfile [Optional]*

| **OFheader 1-1**

| | msgN 1-1

| | - choose -

| | | msgID 0-1

| | - or -

| | | docID 0-1

| | | *@numberingOrg [Optional]*

| | - end choose -

| | msgDate 1-1

| | *@dateForm [Optional]*

| | season 0-1

| | validityStart 0-1

| | *@dateForm [Optional]*

| | validityEnd 1-1

| | *@dateForm [Optional]*

| | **refDoc 1-9**

| | *@docType [Required]*

| | | docID 1-2

| | | *@numberingOrg [Optional]*

| | | docDate 0-1

| | | *@dateForm [Optional]*

| | | season 0-1

| | | itemID 0-1

| | **buyer 1-1**

| | *@logo [Optional]*

| | *@sender [Optional]*

| | | id 1-1

| | | *@numberingOrg [Optional]*

| | | legalName 0-1

| | | dept 0-1

| | | person 0-1

| | | *@email [Optional]*

| | | *@phone [Optional]*

| | | *@fax [Optional]*

```

| | | street 0-1
| | | city 0-1
| | | subCountry 0-1
| | | country 0-1
| | | postCode 0-1
| - choose -
| | supplier 1-1
| | @logo [Optional]
| | @sender [Optional]
| | | id 1-1
| | | @numberingOrg [Optional]
| | | legalName 0-1
| | | dept 0-1
| | | person 0-1
| | | @email [Optional]
| | | @phone [Optional]
| | | @fax [Optional]
| | | street 0-1
| | | city 0-1
| | | subCountry 0-1
| | | country 0-1
| | | postCode 0-1
| - or -
| | subContractor 1-1
| | @sender [Optional]
| | | id 1-1
| | | @numberingOrg [Optional]
| | | legalName 0-1
| | | dept 0-1
| | | person 0-1
| | | @email [Optional]
| | | @phone [Optional]
| | | @fax [Optional]
| | | street 0-1
| | | city 0-1
| | | subCountry 0-1
| | | country 0-1
| | | postCode 0-1
| - end choose -
| | note 0-19
| | @numberingOrg [Optional]
| | @codeList [Optional]
| | @noteLabel [Optional]

```

```

| terms 0-1
| | payment 0-5
| | @finDiscount [Optional]
| | @finSurcharge [Optional]
| | - choose -
| | | payTerm 1-1
| | | - or -
| | | payTermText 1-1
| | | - end choose -
| | | payMode 0-1
| | insPayment 0-5
| | @part [Required]
| | - choose -
| | | payTerm 1-1
| | | - or -
| | | payTermText 1-1
| | | - end choose -

```

```

| | | payMode 0-1
| | trade 0-1
| | - choose -
| | | incoTermText 1-1
| | - or -
| | | incoTerm 1-1
| | - end choose -
| | | location 0-1
| | | @LRI [Optional]
| | transInfo 0-1
| | @transReason [Optional]
| | | transMode 1-1
| | | carrier 0-1
| | | deliveryPlace 0-1
| | | grossWeight 0-1
| | | @um [Required]
| | | netWeight 0-1
| | | @um [Required]
| | | transMeans 0-1
| | | transCondition 0-3
| | | transConditionText 0-1
| | allowanceCharge 0-9
| | @VAT [Optional]
| | - choose -
| | | AC_category 1-1
| | - or -
| | | AC_categoryText 1-1
| | - choose -
| | | AC_percent 1-1
| | - or -
| | | AC_amount 1-1
| | - end choose -
| | | dtScheme 0-1
| | | @taxType [Required]
| | | | taxCategory 0-1
| | | | taxRate 0-1
| | | | legalRef 0-1
| | | | @codeList [Required]
| | | | note 0-19
| | | | @numberingOrg [Optional]
| | | | @codeList [Optional]
| | | | @noteLabel [Optional]

```

| **TFOFbody 1-1**

## 2.2 Detailed description of document elements

Following tables show all elements (complex and simple) used in this document. Description includes: 1) element's information: xml tag, name, brief description, data type and syntax constraints; 2) information about use of the element in a particular position in the document: xpath and possible associated notes.

### 2.2.1 Complex elements (Aggregate Business Information Entities)

Complex elements are those elements whose content is composed of other elements (childs).Complex elements are alphabetically ordered.

<b>allowanceCharge</b>	Allowances and Charges related to an Order or a contract (XPath: <a href="#">TEXDyFinOffer/terms/allowanceCharge</a> ) 0-9
<b>buyer</b>	details of the Buyer - base type: Nad, (XPath: <a href="#">TEXDyFinOffer/OFheader/buyer</a> ) 1-1
<b>dtScheme</b>	set of data usable to declare the duty or tax applied (XPath: <a href="#">TEXDyFinOffer/terms/allowanceCharge/dtScheme</a> ) 0-1
<b>insPayment</b>	payment details for payment by installments (XPath: <a href="#">TEXDyFinOffer/terms/insPayment</a> ) 0-5 - note: <i>excluded the case of offers, this set of data is alternative to payment set and must be iterated for each payment installment</i>
<b>OFheader</b>	header of the document OFFER (XPath: <a href="#">TEXDyFinOffer/OFheader</a> ) 1-1
<b>payment</b>	payment details for payment all in one (XPath: <a href="#">TEXDyFinOffer/terms/payment</a> ) 0-5 - note: <i>excluded the case of offers, this set of data is alternative to insPayment, it can be iterated to specify alternative terms of payment (e.g.: 60 days or 30 days with 3% discount)</i>
<b>refDoc</b>	identification of a document and of an item thereof, to which the message makes reference (XPath: <a href="#">TEXDyFinOffer/OFheader/refDoc</a> ) 1-9 - note: <i>reference to the Request for Offer</i>
<b>subContractor</b>	details of the Sub-contractor - base type: Nad, (XPath: <a href="#">TEXDyFinOffer/OFheader/subContractor</a> ) 1-1
<b>supplier</b>	details of the Supplier - base type: Nad, (XPath: <a href="#">TEXDyFinOffer/OFheader/supplier</a> ) 1-1
<b>terms</b>	details of the commercial obligations for payment and delivery (XPath: <a href="#">TEXDyFinOffer/terms</a> ) 0-1
<b>TFOFbody</b>	body of the document OFFER OF TEXTILE DYEING/FINISHING (XPath: <a href="#">TEXDyFinOffer/TFOFbody</a> ) 1-1
<b>trade</b>	general terms of trade for the specified supply (XPath: <a href="#">TEXDyFinOffer/terms/trade</a> ) 0-1

<b>transInfo</b>	details of transport: mode, carrier and delivery place (XPath: <a href="#">TEXDyFinOffer/terms/transInfo</a> ) 0-1
------------------	---

## 2.2.2 Simple elements (Basic Business Information Entities)

Simple elements are those elements whose content is characterized by a data type plus a domain of possible values. Simple elements are alphabetically ordered.

AC_amount	amount of an Allowance or Charge - base type: decimal, fraction digits: 2, (XPath: <a href="#">TEXDyFinOffer/terms/allowanceCharge/AC_amount</a> ) 1-1
AC_category	coded specification of an Allowance or Charge - base type: string, cod. table: T41 <a href="http://www.moda-ml.net/moda-ml/repository/codelist/v2013-1/gc_T41.xml">http://www.moda-ml.net/moda-ml/repository/codelist/v2013-1/gc_T41.xml</a> (XPath: <a href="#">TEXDyFinOffer/terms/allowanceCharge/AC_category</a> ) 1-1
AC_categoryText	free text description of an Allowance or Charge - base type: string, max length: 70, (XPath: <a href="#">TEXDyFinOffer/terms/allowanceCharge/AC_categoryText</a> ) 1-1
AC_percent	amount of an Allowance or Charge as a percentage - base type: decimal, max inclusive: 100, fraction digits: 2, (XPath: <a href="#">TEXDyFinOffer/terms/allowanceCharge/AC_percent</a> ) 1-1
carrier	identification of the transport carrier - base type: string, max length: 40, (XPath: <a href="#">TEXDyFinOffer/terms/transInfo/carrier</a> ) 0-1
city	name of the city (town, village) - base type: string, max length: 40, (XPath: <a href="#">TEXDyFinOffer/OFheader/buyer/city</a> ) 0-1 (XPath: <a href="#">TEXDyFinOffer/OFheader/supplier/city</a> ) 0-1 (XPath: <a href="#">TEXDyFinOffer/OFheader/subContractor/city</a> ) 0-1
@codeList	it specifies the URL where the list of codes used to make an instance of the element can be found - base type: string, max length: 255, (XPath: <a href="#">TEXDyFinOffer/terms/allowanceCharge/dtScheme/legalRef/@codeList</a> ) [Required] (XPath: <a href="#">TEXDyFinOffer/OFheader/note/@codeList</a> ) [Optional] - nota: <i>must be used to provide (URL) the list of codes used in "noteLabel"</i> (XPath: <a href="#">TEXDyFinOffer/terms/allowanceCharge/dtScheme/note/@codeList</a> ) [Optional] - nota: <i>must be used to provide (URL) the list of codes used in "noteLabel"</i>
country	code of the nation - base type: string, cod. table: T10 <a href="http://www.moda-ml.net/moda-ml/repository/codelist/v2013-1/gc_T10.xml">http://www.moda-ml.net/moda-ml/repository/codelist/v2013-1/gc_T10.xml</a> (XPath: <a href="#">TEXDyFinOffer/OFheader/supplier/country</a> ) 0-1 (XPath: <a href="#">TEXDyFinOffer/OFheader/subContractor/country</a> ) 0-1 (XPath: <a href="#">TEXDyFinOffer/OFheader/buyer/country</a> ) 0-1
@dateForm	format used for the date - base type: string, cod. table: NT29 <a href="http://www.moda-ml.net/moda-ml/repository/codelist/v2013-1/gc_NT29.xml">http://www.moda-ml.net/moda-ml/repository/codelist/v2013-1/gc_NT29.xml</a> (XPath: <a href="#">TEXDyFinOffer/OFheader/validityStart/@dateForm</a> ) [Optional] (XPath: <a href="#">TEXDyFinOffer/OFheader/msgDate/@dateForm</a> ) [Optional] (XPath: <a href="#">TEXDyFinOffer/OFheader/validityEnd/@dateForm</a> ) [Optional] (XPath: <a href="#">TEXDyFinOffer/OFheader/refDoc/docDate/@dateForm</a> ) [Optional]



deliveryPlace	place of delivery of goods, ultimate or related to a given leg - base type: string, max length: 40, (XPath: TEXDyFinOffer/terms/transInfo/deliveryPlace) 0-1
dept	name or code of a contact department within a Party - base type: string, max length: 40, (XPath: TEXDyFinOffer/OFheader/subContractor/dept) 0-1 (XPath: TEXDyFinOffer/OFheader/buyer/dept) 0-1 (XPath: TEXDyFinOffer/OFheader/supplier/dept) 0-1
docDate	date of issue of the referenced document, according to one of the patterns YYYY-MM-DD, YYYY-MM-DD:HH-MM or YYYY-WW. - base type: string, (XPath: TEXDyFinOffer/OFheader/refDoc/docDate) 0-1
docID	identification number of the referenced document SINCE 2008-1 ITS USE IN THE HEADER IS DISCOURAGED (REPLACED BY msgID) - base type: string, max length: 80, (XPath: TEXDyFinOffer/OFheader/refDoc/docID) 1-2 (XPath: TEXDyFinOffer/OFheader/docID) 0-1
@docType	type or class to which the referenced document belongs - base type: string, cod. table: T21 <a href="http://www.moda-ml.net/moda-ml/repository/codelist/v2013-1/gc_T21.xml">http://www.moda-ml.net/moda-ml/repository/codelist/v2013-1/gc_T21.xml</a> (XPath: TEXDyFinOffer/OFheader/refDoc/@docType) [Required]
@email	electronic mail address of the contact person within a Party - base type: string, max length: 80, (XPath: TEXDyFinOffer/OFheader/buyer/person/@email) [Optional] (XPath: TEXDyFinOffer/OFheader/subContractor/person/@email) [Optional] (XPath: TEXDyFinOffer/OFheader/supplier/person/@email) [Optional]
@fabProcQualifier	type of fabric with reference to the manufacturing process - base type: string, cod. table: NT32 <a href="http://www.moda-ml.net/moda-ml/repository/codelist/v2013-1/gc_NT32.xml">http://www.moda-ml.net/moda-ml/repository/codelist/v2013-1/gc_NT32.xml</a> (XPath: TEXDyFinOffer/@fabProcQualifier) [Required]
@fax	fax number of the contact person within a Party - base type: string, max length: 35, (XPath: TEXDyFinOffer/OFheader/subContractor/person/@fax) [Optional] (XPath: TEXDyFinOffer/OFheader/buyer/person/@fax) [Optional] (XPath: TEXDyFinOffer/OFheader/supplier/person/@fax) [Optional]
@finDiscount	financial discount applied for payment by the date specified - base type: decimal, min inclusive: 0, max inclusive: 100, fraction digits: 2, (XPath: TEXDyFinOffer/terms/payment/@finDiscount) [Optional]
@finSurcharge	financial surcharge applied for payment after the date specified - base type: decimal, min inclusive: 0, max inclusive: 100, fraction digits: 2, (XPath: TEXDyFinOffer/terms/payment/@finSurcharge) [Optional]
grossWeight	the gross weight of the overall goods supply, declared for transport or customs purpose - base type: decimal, min inclusive: 0, fraction digits: 2, (XPath: TEXDyFinOffer/terms/transInfo/grossWeight) 0-1
id	primary identification code of a Party; it is recommended the format: nation code (ISO 3166) + VAT identification number (11 crt), with the qualifier "numberingOrg"= MF - base type: string, max length: 15, (XPath: TEXDyFinOffer/OFheader/subContractor/id) 1-1 (XPath: TEXDyFinOffer/OFheader/buyer/id) 1-1 (XPath: TEXDyFinOffer/OFheader/supplier/id) 1-1

incoTerm	specification of the terms of trade (INCOTERMS) - base type: string, cod. table: T3 <a href="http://www.moda-ml.net/moda-ml/repository/codelist/v2013-1/gc_T3.xml">http://www.moda-ml.net/moda-ml/repository/codelist/v2013-1/gc_T3.xml</a> (XPath: <a href="#">TEXDyFinOffer/terms/trade/incoTerm</a> ) 1-1
incoTermText	free text specifying the terms of trade (incoterm, location) - base type: string, max length: 70, (XPath: <a href="#">TEXDyFinOffer/terms/trade/incoTermText</a> ) 1-1
itemID	number of the line/item of the referenced document - base type: string, max length: 6, (XPath: <a href="#">TEXDyFinOffer/OFheader/refDoc/itemID</a> ) 0-1
legalName	legal name of a Party - base type: string, max length: 80, (XPath: <a href="#">TEXDyFinOffer/OFheader/subContractor/legalName</a> ) 0-1 (XPath: <a href="#">TEXDyFinOffer/OFheader/supplier/legalName</a> ) 0-1 (XPath: <a href="#">TEXDyFinOffer/OFheader/buyer/legalName</a> ) 0-1
legalRef	legal reference of the duty or tax or fee category - base type: string, (XPath: <a href="#">TEXDyFinOffer/terms/allowanceCharge/dtScheme/legalRef</a> ) 0-1
location	specification of a location - base type: string, max length: 40, (XPath: <a href="#">TEXDyFinOffer/terms/trade/location</a> ) 0-1 - note: <i>place to which the INCOTERM applies</i>
@logo	company logo (URL of the image jpeg or gif). It is recommended that the width of the image does not exceed 640 pixel. - base type: string, max length: 255, (XPath: <a href="#">TEXDyFinOffer/OFheader/buyer/@logo</a> ) [Optional] (XPath: <a href="#">TEXDyFinOffer/OFheader/supplier/@logo</a> ) [Optional]
@LRI	attribute usable to format a string according to a customized User rule (local rule) - base type: string, cod. table: NT3 <a href="http://www.moda-ml.net/moda-ml/repository/codelist/v2013-1/gc_NT3.xml">http://www.moda-ml.net/moda-ml/repository/codelist/v2013-1/gc_NT3.xml</a> (XPath: <a href="#">TEXDyFinOffer/terms/trade/location/@LRI</a> ) [Optional]
msgDate	date of issue of the present message (xml document), according to one of the patterns YYYY-MM-DD, YYYY-MM-DD:HH-MM or YYYY-WW. - base type: string, (XPath: <a href="#">TEXDyFinOffer/OFheader/msgDate</a> ) 1-1
@msgfunction	function performed by the present message with regards to the transmission - base type: string, cod. table: NT18 <a href="http://www.moda-ml.net/moda-ml/repository/codelist/v2013-1/gc_NT18.xml">http://www.moda-ml.net/moda-ml/repository/codelist/v2013-1/gc_NT18.xml</a> (XPath: <a href="#">TEXDyFinOffer/@msgfunction</a> ) [Optional] [Default= OR]
msgID	key identifier of the document in the information system of the issuing Party - base type: string, max length: 35, (XPath: <a href="#">TEXDyFinOffer/OFheader/msgID</a> ) 0-1
msgN	identification number given to the message (xml document) by its issuer - base type: string, max length: 35, (XPath: <a href="#">TEXDyFinOffer/OFheader/msgN</a> ) 1-1
netWeight	the net weight of the overall goods supply, declared for transport or customs purpose - base type: decimal, min inclusive: 0, fraction digits: 2, (XPath: <a href="#">TEXDyFinOffer/terms/transInfo/netWeight</a> ) 0-1

note	<p>free text or structured (computer processing) note. For note structuring use the attributes "noteLabel" and "codelist"</p> <p>- base type: string, max length: 350,  (XPath: TEXDyFinOffer/terms/allowanceCharge/dtScheme/note) 0-19  (XPath: TEXDyFinOffer/OFheader/note) 0-19</p>
@noteLabel	<p>subject qualifier of a note</p> <p>- base type: string, max length: 35,  (XPath: TEXDyFinOffer/OFheader/note/@noteLabel) [Optional]  - nota: <i>must be used to qualify the subject of the note</i>  (XPath: TEXDyFinOffer/terms/allowanceCharge/dtScheme/note/@noteLabel) [Optional]  - nota: <i>must be used to qualify the subject of the note</i></p>
@numberingOrg	<p>code specifying the organisation who has created or owns the coding or numbering system</p> <p>- base type: string, cod. table: NT6  <a href="http://www.moda-ml.net/moda-ml/repository/codelist/v2013-1/gc_NT6.xml">http://www.moda-ml.net/moda-ml/repository/codelist/v2013-1/gc_NT6.xml</a>  (XPath: TEXDyFinOffer/OFheader/buyer/id/@numberingOrg) [Optional]  (XPath: TEXDyFinOffer/terms/allowanceCharge/dtScheme/note/@numberingOrg) [Optional]  (XPath: TEXDyFinOffer/OFheader/docID/@numberingOrg) [Optional]  - nota: <i>here can be specified whose document numbering is used (e.g.: Client, Supplier, ..)</i>  (XPath: TEXDyFinOffer/OFheader/refDoc/docID/@numberingOrg) [Optional]  - nota: <i>here can be specified whose document numbering is used (e.g.: Client, Supplier, ..)</i>  (XPath: TEXDyFinOffer/OFheader/note/@numberingOrg) [Optional]  (XPath: TEXDyFinOffer/OFheader/subContractor/id/@numberingOrg) [Optional]  (XPath: TEXDyFinOffer/OFheader/supplier/id/@numberingOrg) [Optional]</p>
@part	<p>percent fraction of a total payment</p> <p>- base type: decimal, min inclusive: 1, max inclusive: 99, fraction digits: 2,  (XPath: TEXDyFinOffer/terms/insPayment/@part) [Required]  - nota: <i>here the % value of each installment must be indicated</i></p>
payMode	<p>way or means of payment</p> <p>- base type: string, cod. table: T2  <a href="http://www.moda-ml.net/moda-ml/repository/codelist/v2013-1/gc_T2.xml">http://www.moda-ml.net/moda-ml/repository/codelist/v2013-1/gc_T2.xml</a>  (XPath: TEXDyFinOffer/terms/payment/payMode) 0-1  (XPath: TEXDyFinOffer/terms/insPayment/payMode) 0-1</p>
payTerm	<p>code specifying the terms or time by which the payment must be done</p> <p>- base type: string, cod. table: T1  <a href="http://www.moda-ml.net/moda-ml/repository/codelist/v2013-1/gc_T1.xml">http://www.moda-ml.net/moda-ml/repository/codelist/v2013-1/gc_T1.xml</a>  (XPath: TEXDyFinOffer/terms/insPayment/payTerm) 1-1  (XPath: TEXDyFinOffer/terms/payment/payTerm) 1-1</p>
payTermText	<p>free text specifying the terms by which the payment must be done (time/mode or means)</p> <p>- base type: string, max length: 40,  (XPath: TEXDyFinOffer/terms/insPayment/payTermText) 1-1  (XPath: TEXDyFinOffer/terms/payment/payTermText) 1-1</p>
person	<p>name of the contact person within a Party</p> <p>- base type: string, max length: 40,  (XPath: TEXDyFinOffer/OFheader/supplier/person) 0-1  (XPath: TEXDyFinOffer/OFheader/subContractor/person) 0-1  (XPath: TEXDyFinOffer/OFheader/buyer/person) 0-1</p>
@phone	<p>phone number of the contact person within a Party</p>

	<p>- base type: string, max length: 35,  (XPath: <a href="#">TEXDyFinOffer/OFheader/subContractor/person/@phone</a>) [Optional]  (XPath: <a href="#">TEXDyFinOffer/OFheader/buyer/person/@phone</a>) [Optional]  (XPath: <a href="#">TEXDyFinOffer/OFheader/supplier/person/@phone</a>) [Optional]</p>
postCode	<p>code defining the postal zone  - base type: string, max length: 10,  (XPath: <a href="#">TEXDyFinOffer/OFheader/supplier/postCode</a>) 0-1  (XPath: <a href="#">TEXDyFinOffer/OFheader/buyer/postCode</a>) 0-1  (XPath: <a href="#">TEXDyFinOffer/OFheader/subContractor/postCode</a>) 0-1</p>
season	<p>sale season; defined as: season (1 crt) + year (4 crt) - season:  S/S=1 A/W=2 Spring=3 Summer=4 Autumn=5 Winter=6: for more than four seasons use alphabetic sequence: 1st season=A 2nd season=B etc.etc.  - base type: string, max length: 15,  (XPath: <a href="#">TEXDyFinOffer/OFheader/season</a>) 0-1  (XPath: <a href="#">TEXDyFinOffer/OFheader/refDoc/season</a>) 0-1  - note: <i>here indicates the season to which the referenced document belongs</i></p>
@sender	<p>qualifier that specifies the Party issuing of the document  - base type: boolean,  (XPath: <a href="#">TEXDyFinOffer/OFheader/buyer/@sender</a>) [Optional]  - nota: <i>This attribute is mandatory when the STYLESHEET must be produced</i>  (XPath: <a href="#">TEXDyFinOffer/OFheader/supplier/@sender</a>) [Optional]  - nota: <i>This attribute is mandatory when the STYLESHEET must be produced</i>  (XPath: <a href="#">TEXDyFinOffer/OFheader/subContractor/@sender</a>) [Optional]  - nota: <i>This attribute is mandatory when the STYLESHEET must be produced</i></p>
street	<p>street and building number identifying a location  - base type: string, max length: 80,  (XPath: <a href="#">TEXDyFinOffer/OFheader/supplier/street</a>) 0-1  (XPath: <a href="#">TEXDyFinOffer/OFheader/buyer/street</a>) 0-1  (XPath: <a href="#">TEXDyFinOffer/OFheader/subContractor/street</a>) 0-1</p>
subCountry	<p>short name or code of the sub-country entity  - base type: string, max length: 9,  (XPath: <a href="#">TEXDyFinOffer/OFheader/subContractor/subCountry</a>) 0-1  (XPath: <a href="#">TEXDyFinOffer/OFheader/supplier/subCountry</a>) 0-1  (XPath: <a href="#">TEXDyFinOffer/OFheader/buyer/subCountry</a>) 0-1</p>
taxCategory	<p>duty or tax or fee category  - base type: string, cod. table: T62  <a href="http://www.moda-ml.net/moda-ml/repository/codelist/v2013-1/gc_T62.xml">http://www.moda-ml.net/moda-ml/repository/codelist/v2013-1/gc_T62.xml</a>  (XPath: <a href="#">TEXDyFinOffer/terms/allowanceCharge/dtScheme/taxCategory</a>) 0-1</p>
taxRate	<p>duty or tax or fee percent rate  - base type: string,  (XPath: <a href="#">TEXDyFinOffer/terms/allowanceCharge/dtScheme/taxRate</a>) 0-1</p>
@taxType	<p>duty or tax or fee type  - base type: string, cod. table: T61  <a href="http://www.moda-ml.net/moda-ml/repository/codelist/v2013-1/gc_T61.xml">http://www.moda-ml.net/moda-ml/repository/codelist/v2013-1/gc_T61.xml</a>  (XPath: <a href="#">TEXDyFinOffer/terms/allowanceCharge/dtScheme/@taxType</a>) [Required]</p>
transCondition	<p>special condition of transport or special service requested to the Forwarder  - base type: string, cod. table: T38  <a href="http://www.moda-ml.net/moda-ml/repository/codelist/v2013-1/gc_T38.xml">http://www.moda-ml.net/moda-ml/repository/codelist/v2013-1/gc_T38.xml</a>  (XPath: <a href="#">TEXDyFinOffer/terms/transInfo/transCondition</a>) 0-3</p>

transConditionText	free text description of the special condition of transport or special service requested to the Forwarder - base type: string, max length: 100, (XPath: <a href="#">TEXDyFinOffer/terms/transInfo/transConditionText</a> ) 0-1
transMeans	means of transport, in general or referred to a specific leg - base type: string, cod. table: T40 <a href="http://www.moda-ml.net/moda-ml/repository/codelist/v2013-1/gc_T40.xml">http://www.moda-ml.net/moda-ml/repository/codelist/v2013-1/gc_T40.xml</a> (XPath: <a href="#">TEXDyFinOffer/terms/transInfo/transMeans</a> ) 0-1
transMode	way of transport, in general or referred to the specified leg - base type: string, cod. table: T8 <a href="http://www.moda-ml.net/moda-ml/repository/codelist/v2013-1/gc_T8.xml">http://www.moda-ml.net/moda-ml/repository/codelist/v2013-1/gc_T8.xml</a> (XPath: <a href="#">TEXDyFinOffer/terms/transInfo/transMode</a> ) 1-1
@transReason	reason for the transport - base type: string, cod. table: NT11 <a href="http://www.moda-ml.net/moda-ml/repository/codelist/v2013-1/gc_NT11.xml">http://www.moda-ml.net/moda-ml/repository/codelist/v2013-1/gc_NT11.xml</a> (XPath: <a href="#">TEXDyFinOffer/terms/transInfo/@transReason</a> ) [Optional]
@um	specification of the unit of measure - base type: string, cod. table: NT7 <a href="http://www.moda-ml.net/moda-ml/repository/codelist/v2013-1/gc_NT7.xml">http://www.moda-ml.net/moda-ml/repository/codelist/v2013-1/gc_NT7.xml</a> (XPath: <a href="#">TEXDyFinOffer/terms/transInfo/netWeight/@um</a> ) [Required] (XPath: <a href="#">TEXDyFinOffer/terms/transInfo/grossWeight/@um</a> ) [Required]
@useProfile	use profile to which the present document is compliant if it was agreed by the parties. It is suggested a URI with reference to the firms or the URL of the profile. - base type: string, (XPath: <a href="#">TEXDyFinOffer/@useProfile</a> ) [Optional]
validityEnd	date by which the validity ends, according to one of the patterns YYYY-MM-DD, YYYY-MM-DD:HH-MM or YYYY-WW. - base type: string, (XPath: <a href="#">TEXDyFinOffer/OFheader/validityEnd</a> ) 1-1
validityStart	date by which the validity starts, according to one of the patterns YYYY-MM-DD, YYYY-MM-DD:HH-MM or YYYY-WW. - base type: string, (XPath: <a href="#">TEXDyFinOffer/OFheader/validityStart</a> ) 0-1
@VAT	VAT rate or code ( deprecated, use dtScheme element ) - base type: string, cod. table: NT16 <a href="http://www.moda-ml.net/moda-ml/repository/codelist/v2013-1/gc_NT16.xml">http://www.moda-ml.net/moda-ml/repository/codelist/v2013-1/gc_NT16.xml</a> (XPath: <a href="#">TEXDyFinOffer/terms/allowanceCharge/@VAT</a> ) [Optional]
@version	Dictionary version from which the instance has been created - base type: string, cod. table: NT100 <a href="http://www.moda-ml.net/moda-ml/repository/codelist/v2013-1/gc_NT100.xml">http://www.moda-ml.net/moda-ml/repository/codelist/v2013-1/gc_NT100.xml</a> (XPath: <a href="#">TEXDyFinOffer/@version</a> ) [Optional] [Default= 2013-1]

## 2.3 Enumeration tables

List of enumeration tables used in the XML document. You can find the corresponding codes at: <http://www.moda-ml.org/moda-ml/imple/moda-ml-2013-1.asp?lingua=en&pag=6>

NT100 - eBIZ Moda-ML version  
NT11 - transport causal  
NT16 - VAT rate or code  
NT18 - message function  
NT29 - format of a date  
NT3 - data format  
NT32 - fabric family  
NT6 - coding system owner/issuer  
NT7 - unity of measure  
T1 - terms of payment  
T10 - ISO3166 - Country  
T2 - Modes of payment  
T21 - type of document  
T3 - terms of delivery  
T38 - transport conditions  
T40 - type of transport means  
T41 - type of Allowance or Charge  
T61 - duty or tax or fee type  
T62 - duty or tax or fee category  
T8 - Modes of Transport

# Annex A

Representative images of the principal complex elements' structure.

