



<http://www.moda-ml.org>

IMPLEMENTATION GUIDE  
TRANSACTION "TEXTILE DYEING-FINISHING  
ORDER CHANGE"

Version: 2013-1

Date of release: 29/07/2013

Document code: G076

XML Schema repository:<http://www.moda-ml.org/moda-ml/repository/schema/v2013-1/default.asp>

Guides repository:<http://www.moda-ml.org/moda-ml/repository/guide/v2013-1/default.asp>

Guide filename: G076-MODA-ML-TextileDyeing-finishingOrderChange.pdf

# 1. BUSINESS DESCRIPTION

## 1.1 Scope

The present guide has been issued to assist the companies of the Textile-Clothing sector in the implementation of the standard XML document type "TEXTILE DYEING-FINISHING COMMISSION ORDER CHANGE", providing all the instruction required for its use in the context of e-commerce between Dyeing Subcontractors and their Customers shown in the enclosed diagram

All the rules required for the construction and validation of the document are embedded into the specific XML-Schema, which is detailed in section "Implementation guide".

## 1.2 Generalities

The Commissioner sends to the Subcontractor a Fabric dyeing-finishing Order Change any time he must modify some conditions of his previous Order (eg. to suspend operations already ordered) or amend errors.

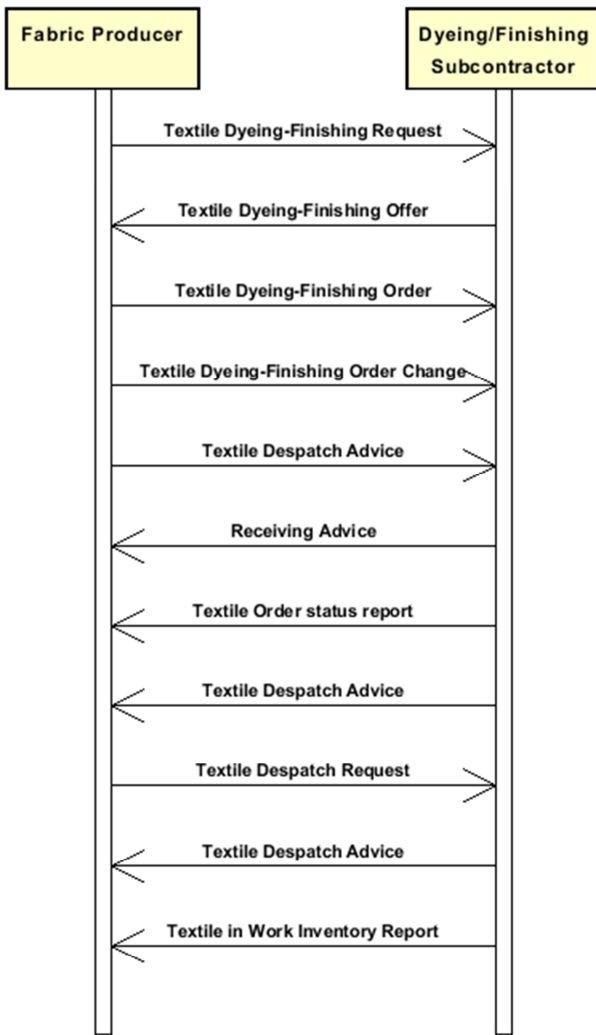
Basic function of the message is to replace an invalid Order with a valid Order, amending:

- suppliable quantities
- dates and places of delivery
- prices

The Order Change can show a number of lines different from the related Purchase Order, when variations/cancellations have occurred so as to create the splitting of an Order Line.

However the sum of the quantities of the lines in the Order Change (confirmed + varied + cancelled) must always equal the sum of the quantities in the original Order.

## 1.3. Possible scenario



## 2. IMPLEMENTATION GUIDE

### 2.1 General structure of XML document

All the business data that can be exchanged through this class of documents are shown in the following "document structure", that provides a simplified vision of the Schema.

In particular:

- the two numbers following each element define its "cardinality" (minimum and maximum number of occurrences); the minimum equal zero indicates that the element is optional, the minimum greater than zero indicates that is mandatory;
- the bold character denotes the complex elements (aggregates of simple elements) that were built for the sake of functionality and re-usability of some complex informations sets. The child elements in each parent element are easily spotted as "indented";
- the symbol "@" denotes an attribute of the preceding element; here "the usage indicator (optional, required, ...)" is shown in square brackets.

### Structure

#### **TEXDyFinOrdChange**

*@msgfunction [Optional]*

*@TFCOtype [Required]*

*@version [Optional] [Default= 2013-1]*

*@useProfile [Optional]*

#### | **TFCXheader 1-1**

| | msgN 1-1

| | - choose -

| | | docID 0-1

| | | *@numberingOrg [Optional]*

| | - or -

| | | msgID 0-1

| | - end choose -

| | | msgDate 1-1

| | | *@dateForm [Optional]*

| | | season 0-1

| | | msgCurrency 0-1

#### | | **refDoc 1-9**

| | | *@docType [Required]*

| | | | docID 1-2

| | | | *@numberingOrg [Optional]*

| | | | docDate 0-1

| | | | *@dateForm [Optional]*

| | | | season 0-1

| | | | itemID 0-1

#### | | **buyer 1-1**

| | | *@logo [Optional]*

| | | *@sender [Optional]*

| | | | id 1-1

| | | | *@numberingOrg [Optional]*

| | | | legalName 0-1

| | | | dept 0-1

| | | | person 0-1

| | | | *@email [Optional]*

| | | | *@phone [Optional]*

| | | | *@fax [Optional]*

| | | | street 0-1

| | | | city 0-1

| | | | subCountry 0-1

- | | | country 0-1
- | | | postCode 0-1
- | | **subContractor 1-1**
- | | | @sender [Optional]
- | | | id 1-1
- | | | | @numberingOrg [Optional]
- | | | legalName 0-1
- | | | dept 0-1
- | | | person 0-1
- | | | | @email [Optional]
- | | | | @phone [Optional]
- | | | | @fax [Optional]
- | | | street 0-1
- | | | city 0-1
- | | | subCountry 0-1
- | | | country 0-1
- | | | postCode 0-1
- | | **thirdParty 0-1**
- | | | @VAT [Optional]
- | | | @role [Required]
- | | | @sender [Optional]
- | | | id 1-1
- | | | | @numberingOrg [Optional]
- | | | legalName 0-1
- | | | dept 0-1
- | | | person 0-1
- | | | | @email [Optional]
- | | | | @phone [Optional]
- | | | | @fax [Optional]
- | | | street 0-1
- | | | city 0-1
- | | | subCountry 0-1
- | | | country 0-1
- | | | postCode 0-1
- | | note 0-19
- | | | @numberingOrg [Optional]
- | | | @codeList [Optional]
- | | | @noteLabel [Optional]

| **terms 0-1**

- | | **payment 0-5**
- | | | @finDiscount [Optional]
- | | | @finSurcharge [Optional]
- | | | - choose -
- | | | | payTerm 1-1
- | | | | - or -
- | | | | payTermText 1-1
- | | | | - end choose -
- | | | | payMode 0-1
- | | **insPayment 0-5**
- | | | @part [Required]
- | | | - choose -
- | | | | payTerm 1-1
- | | | | - or -
- | | | | payTermText 1-1
- | | | | - end choose -
- | | | | payMode 0-1
- | | **trade 0-1**
- | | | - choose -
- | | | | incoTermText 1-1
- | | | | - or -

- | | | incoTerm 1-1
- | | - end choose -
- | | | location 0-1
- | | | @LRI [Optional]
- | | **transInfo 0-1**
- | | | @transReason [Optional]
- | | | transMode 1-1
- | | | carrier 0-1
- | | | deliveryPlace 0-1
- | | | grossWeight 0-1
- | | | @um [Required]
- | | | netWeight 0-1
- | | | @um [Required]
- | | | transMeans 0-1
- | | | transCondition 0-3
- | | | transConditionText 0-1
- | | **allowanceCharge 0-9**
- | | | @VAT [Optional]
- | | - choose -
- | | | AC\_category 1-1
- | | - or -
- | | | AC\_categoryText 1-1
- | | - choose -
- | | | AC\_percent 1-1
- | | - or -
- | | | AC\_amount 1-1
- | | - end choose -
- | | | **dtScheme 0-1**
- | | | @taxType [Required]
- | | | taxCategory 0-1
- | | | taxRate 0-1
- | | | legalRef 0-1
- | | | @codeList [Required]
- | | | note 0-19
- | | | @numberingOrg [Optional]
- | | | @codeList [Optional]
- | | | @noteLabel [Optional]

**TFCXbody 1-1**

- | | **TFCXitem 1-unbounded**
- | | | @act [Required]
- | | | lineN 1-1
- | | | @VAT [Optional]
- | | | **refDoc 1-9**
- | | | | @docType [Required]
- | | | | docID 1-2
- | | | | @numberingOrg [Optional]
- | | | | docDate 0-1
- | | | | @dateForm [Optional]
- | | | | season 0-1
- | | | | itemID 0-1
- | | | **fabricProd 0-1**
- | | | | @CTest [Optional]
- | | | | **texCode 1-1**
- | | | | | @numberingOrg [Optional]
- | | | | | art 1-1
- | | | | | @numberingOrg [Optional]
- | | | | | @codeList [Optional]
- | | | | | @listName [Optional]
- | | | | | @listVersion [Optional]
- | | | | pattern 0-1

```

| | | | | @numberingOrg [Optional]
| | | | | @codeList [Optional]
| | | | | @listName [Optional]
| | | | | @listVersion [Optional]
| | | | | color 0-1
| | | | | @numberingOrg [Optional]
| | | | | @codeList [Optional]
| | | | | @listName [Optional]
| | | | | @listVersion [Optional]
| | | | | added 0-9
| | | | | @numberingOrg [Optional]
| | | | | @addType [Optional]
| | | | | description 0-1
| | | | | fabricCompos 0-1
| | | | | | percCompos 1-9
| | | | | | @fibre [Required]
| | | | | fabricWidth 0-1
| | | | | @um [Optional] [Default= CMT]
| | | | | fabricSpecs 0-99
| | | | | - choose -
| | | | | | fabricCharText 1-1
| | | | | - or -
| | | | | | fabricChar 1-1
| | | | | - end choose -
| | | | | | specValue 0-1
| | | | | | @um [Optional]
| | | | | | @source [Optional]
| | | | | | @method [Optional]
| | | | | | @application [Optional]
| | | | | | @CV [Optional]
| | | | | - choose -
| | | | | | tolerance 0-2
| | | | | | @um [Required]
| | | | | - or -
| | | | | | pcTolerance 0-2
| | | | | | @um [Optional]
| | | | | - end choose -
| | | | | - choose -
| | | | | | pieceChain 0-99
| | | | | | serialN 1-1
| | | | | | @numberingOrg [Optional]
| | | | | | pieceLength 0-1
| | | | | | @um [Optional] [Default= MTR]
| | | | | | pieceWidth 0-1
| | | | | | @um [Optional] [Default= CMT]
| | | | | | pieceWeight 0-1
| | | | | | @um [Optional] [Default= KGM]
| | | | | | lotN 0-1
| | | | | | @numberingOrg [Optional]
| | | | | | dyeN 0-1
| | | | | | @numberingOrg [Optional]
| | | | | | packageN 0-1
| | | | | | @numberingOrg [Optional]
| | | | | | @packageContainerN [Optional]
| | | | | | piecePack 0-1
| | | | | - choose -
| | | | | | piecePackText 1-1
| | | | | - or -
| | | | | | pieceInnWrap1 1-1
| | | | | | pieceInnWrap2 0-1
| | | | | | pieceOutWrap 0-1

```

```

- end choose -
| | | | | pieceCut 0-99
| | | | | serialN 1-1
| | | | | @numberingOrg [Optional]
| | | | | pieceLength 0-1
| | | | | @um [Optional] [Default= MTR]
| | | | | pieceWeight 0-1
| | | | | @um [Optional] [Default= KGM]
- or -
| | | | | piece 0-99
| | | | | @endUse [Optional]
| | | | | serialN 1-3
| | | | | @numberingOrg [Optional]
| | | | | EPC 0-1
| | | | | @numberingOrg [Optional]
| | | | | @TID [Optional]
| | | | | totFault 0-1
| | | | | pieceStatus 0-1
| | | | | pieceLength 0-1
| | | | | @um [Optional] [Default= MTR]
| | | | | pieceWidth 0-1
| | | | | @um [Optional] [Default= CMT]
| | | | | pieceCutWidth 0-1
| | | | | @um [Optional] [Default= CMT]
| | | | | pieceWeight 0-1
| | | | | @um [Optional] [Default= KGM]
| | | | | pieceWeightM 0-1
| | | | | @um [Optional] [Default= GRM]
| | | | | pieceAllow 0-1
| | | | | @um [Required]
| | | | | lotN 0-1
| | | | | @numberingOrg [Optional]
| | | | | dyeN 0-1
| | | | | @numberingOrg [Optional]
| | | | | mixMatch 0-1
| | | | | @numberingOrg [Optional]
| | | | | packageN 0-1
| | | | | @numberingOrg [Optional]
| | | | | @packageContainerN [Optional]
| | | | | piecePack 0-1
- choose -
| | | | | piecePackText 1-1
- or -
| | | | | pieceInnWrap1 1-1
| | | | | pieceInnWrap2 0-1
| | | | | pieceOutWrap 0-1
- end choose -
- end choose -
| | | | | note 0-19
| | | | | @numberingOrg [Optional]
| | | | | @codeList [Optional]
| | | | | @noteLabel [Optional]
| | | | | qty 0-3
| | | | | @um [Required]
| | | | | price 0-1
| | | | | @um [Optional]
| | | | | @priceQualifier [Optional] [Default= NET]
| | | | | deliveryDate 0-1
| | | | | @dateForm [Optional]
| | | | | thirdParty 0-1
| | | | | @VAT [Optional]

```



```

| | | @role [Required]
| | | @sender [Optional]
| | | id 1-1
| | | | @numberingOrg [Optional]
| | | legalName 0-1
| | | dept 0-1
| | | person 0-1
| | | | @email [Optional]
| | | | @phone [Optional]
| | | | @fax [Optional]
| | | street 0-1
| | | city 0-1
| | | subCountry 0-1
| | | country 0-1
| | | postCode 0-1
| | | fabricComponent 0-9
| | | | texCode 1-1
| | | | | @numberingOrg [Optional]
| | | | | art 1-1
| | | | | | @numberingOrg [Optional]
| | | | | | @codeList [Optional]
| | | | | | @listName [Optional]
| | | | | | @listVersion [Optional]
| | | | | pattern 0-1
| | | | | | @numberingOrg [Optional]
| | | | | | @codeList [Optional]
| | | | | | @listName [Optional]
| | | | | | @listVersion [Optional]
| | | | | color 0-1
| | | | | | @numberingOrg [Optional]
| | | | | | @codeList [Optional]
| | | | | | @listName [Optional]
| | | | | | @listVersion [Optional]
| | | | | added 0-9
| | | | | | @numberingOrg [Optional]
| | | | | | @addType [Optional]
| | | | | description 0-1
| | | qty 1-3
| | | | @um [Required]
| | | serialN 0-99
| | | | @numberingOrg [Optional]
| | | | refDoc 0-1
| | | | | @docType [Required]
| | | | | docID 1-2
| | | | | | @numberingOrg [Optional]
| | | | | docDate 0-1
| | | | | | @dateForm [Optional]
| | | | | season 0-1
| | | | | itemID 0-1
| | | | location 0-1
| | | | | @LRI [Optional]
| | | | note 0-19
| | | | | @numberingOrg [Optional]
| | | | | @codeList [Optional]
| | | | | @noteLabel [Optional]
| | | | fabMnfrOperation 0-9
| | | | - choose -
| | | | | jobName 1-1
| | | | - or -
| | | | | texJob 1-1
| | | | - end choose -

```

```

| | | | texJobTech 0-9
| | | | refDoc 0-1
| | | |   @docType [Required]
| | | |   | docID 1-2
| | | |   |   @numberingOrg [Optional]
| | | |   | docDate 0-1
| | | |   |   @dateForm [Optional]
| | | |   | season 0-1
| | | |   | itemID 0-1
| | | | texMachine 0-1
| | | | texMachineSpecs 0-9
| | | |   | texMachineParam 1-1
| | | |   | specValue 0-1
| | | |   |   @um [Optional]
| | | |   |   @source [Optional]
| | | |   |   @method [Optional]
| | | |   |   @application [Optional]
| | | |   |   @CV [Optional]
| | | | - choose -
| | | |   | pcTolerance 0-2
| | | |   |   @um [Optional]
| | | | - or -
| | | |   | tolerance 0-2
| | | |   |   @um [Required]
| | | | - end choose -
| | | | note 0-19
| | | |   @numberingOrg [Optional]
| | | |   @codeList [Optional]
| | | |   @noteLabel [Optional]
| | | | dtScheme 0-1
| | | |   @taxType [Required]
| | | |   | taxCategory 0-1
| | | |   | taxRate 0-1
| | | |   | legalRef 0-1
| | | |   |   @codeList [Required]
| | | |   | note 0-19
| | | |   |   @numberingOrg [Optional]
| | | |   |   @codeList [Optional]
| | | |   |   @noteLabel [Optional]

```

## 2.2 Detailed description of document elements

Following tables show all elements (complex and simple) used in this document. Description includes: 1) element's information: xml tag, name, brief description, data type and syntax constraints; 2) information about use of the element in a particular position in the document: xpath and possible associated notes.

### 2.2.1 Complex elements (Aggregate Business Information Entities)

Complex elements are those elements whose content is composed of other elements (childs). Complex elements are alphabetically ordered.

<b>allowanceCharge</b>	Allowances and Charges related to an Order or a contract (XPath: <a href="#">TEXDyFinOrdChange/terms/allowanceCharge</a> ) 0-9
<b>buyer</b>	details of the Buyer - base type: Nad, (XPath: <a href="#">TEXDyFinOrdChange/TFCXheader/buyer</a> ) 1-1
<b>dtScheme</b>	set of data usable to declare the duty or tax applied (XPath: <a href="#">TEXDyFinOrdChange/TFCXbody/TFCXitem/dtScheme</a> ) 0-1 (XPath: <a href="#">TEXDyFinOrdChange/terms/allowanceCharge/dtScheme</a> ) 0-1
<b>fabMnfrOperation</b>	details of a manufacturing operation used for fabric production (XPath: <a href="#">TEXDyFinOrdChange/TFCXbody/TFCXitem/fabMnfrOperation</a> ) 0-9
<b>fabricComponent</b>	identification details of a fabric used in a sub-contracted manufacturing operation (XPath: <a href="#">TEXDyFinOrdChange/TFCXbody/TFCXitem/fabricComponent</a> ) 0-9
<b>fabricCompos</b>	composition of the fabric according to the Directory 97/37/CE (XPath: <a href="#">TEXDyFinOrdChange/TFCXbody/TFCXitem/fabricProd/fabricCompos</a> ) 0-1
<b>fabricProd</b>	manufacturing specifications of the product to be obtained from an operation of the sub-contracted production of fabric (XPath: <a href="#">TEXDyFinOrdChange/TFCXbody/TFCXitem/fabricProd</a> ) 0-1
<b>fabricSpecs</b>	technical characteristics of fabric, linked either to an operation of subcontracted production or to the purchase (XPath: <a href="#">TEXDyFinOrdChange/TFCXbody/TFCXitem/fabricProd/fabricSpecs</a> ) 0-99
<b>insPayment</b>	payment details for payment by installments (XPath: <a href="#">TEXDyFinOrdChange/terms/insPayment</a> ) 0-5 - note: <i>excluded the case of offers, this set of data is alternative to payment set and must be iterated for each payment installment</i>
<b>payment</b>	payment details for payment all in one (XPath: <a href="#">TEXDyFinOrdChange/terms/payment</a> ) 0-5 - note: <i>excluded the case of offers, this set of data is alternative to insPayment, it can be iterated to specify alternative terms of payment (e.g.: 60 days or 30 days with 3% discount)</i>
<b>piece</b>	Identification data and measurement of the fabric piece (XPath: <a href="#">TEXDyFinOrdChange/TFCXbody/TFCXitem/fabricProd/piece</a> ) 0-99
<b>pieceChain</b>	identification data and measurements of a chain of pieces still to be cut (XPath: <a href="#">TEXDyFinOrdChange/TFCXbody/TFCXitem/fabricProd/pieceChain</a> ) 0-99
<b>pieceCut</b>	identification data and measurements of a fabric piece belonging to a chain still to be cut (XPath: <a href="#">TEXDyFinOrdChange/TFCXbody/TFCXitem/fabricProd/pieceChain/pieceCut</a> ) 0-99 - note: <i>here the data of the pieces making up the chain should be specified</i>

<b>piecePack</b>	type of wrapping or packing of the fabric pieces (XPath: TEXDyFinOrdChange/TFCXbody/TFCXitem/fabricProd/pieceChain/piecePack) 0-1 (XPath: TEXDyFinOrdChange/TFCXbody/TFCXitem/fabricProd/piece/piecePack) 0-1
<b>refDoc</b>	identification of a document and of an item thereof, to which the message makes reference (XPath: TEXDyFinOrdChange/TFCXbody/TFCXitem/fabricComponent/refDoc) 0-1 - note: <i>here the delivery documents can be specified</i> (XPath: TEXDyFinOrdChange/TFCXbody/TFCXitem/refDoc) 1-9 (XPath: TEXDyFinOrdChange/TFCXbody/TFCXitem/fabMnfrOperation/refDoc) 0-1 - note: <i>here a Process Sheet transmitted to the Subcontractor can be referenced</i> (XPath: TEXDyFinOrdChange/TFCXheader/refDoc) 1-9
<b>subContractor</b>	details of the Sub-contractor - base type: Nad, (XPath: TEXDyFinOrdChange/TFCXheader/subContractor) 1-1
<b>terms</b>	details of the commercial obligations for payment and delivery (XPath: TEXDyFinOrdChange/terms) 0-1
<b>texCode</b>	full codification of the textile product (XPath: TEXDyFinOrdChange/TFCXbody/TFCXitem/fabricProd/texCode) 1-1 (XPath: TEXDyFinOrdChange/TFCXbody/TFCXitem/fabricComponent/texCode) 1-1
<b>texMachineSpecs</b>	technical specifications of a machine used in an operation of a work cycle for fabric (type and settings) (XPath: TEXDyFinOrdChange/TFCXbody/TFCXitem/fabMnfrOperation/texMachineSpecs) 0-9
<b>TFCXbody</b>	body of the document "TEXTILES DYEING-FINISHING COMMISSION ORDER CHANGE" (XPath: TEXDyFinOrdChange/TFCXbody) 1-1
<b>TFCXheader</b>	header of the document "TEXTILES DYEING-FINISHING COMMISSION ORDER CHANGE" (XPath: TEXDyFinOrdChange/TFCXheader) 1-1
<b>TFCXitem</b>	line item of the document "TEXTILES DYEING-FINISHING COMMISSION ORDER CHANGE" (XPath: TEXDyFinOrdChange/TFCXbody/TFCXitem) 1-unbounded
<b>thirdParty</b>	details of the Third Party, different from Buyer or Supplier - base type: Nad, (XPath: TEXDyFinOrdChange/TFCXbody/TFCXitem/thirdParty) 0-1 (XPath: TEXDyFinOrdChange/TFCXheader/thirdParty) 0-1
<b>trade</b>	general terms of trade for the specified supply (XPath: TEXDyFinOrdChange/terms/trade) 0-1
<b>transInfo</b>	details of transport: mode, carrier and delivery place (XPath: TEXDyFinOrdChange/terms/transInfo) 0-1

## 2.2.2 Simple elements (Basic Business Information Entities)

Simple elements are those elements whose content is characterized by a data type plus a domain of possible values. Simple elements are alphabetically ordered.

AC_amount	amount of an Allowance or Charge - base type: decimal, fraction digits: 2, (XPath: <a href="#">TEXDyFinOrdChange/terms/allowanceCharge/AC_amount</a> ) 1-1
AC_category	coded specification of an Allowance or Charge - base type: string, cod. table: T41 <a href="http://www.moda-ml.net/moda-ml/repository/codelist/v2013-1/gc_T41.xml">http://www.moda-ml.net/moda-ml/repository/codelist/v2013-1/gc_T41.xml</a> (XPath: <a href="#">TEXDyFinOrdChange/terms/allowanceCharge/AC_category</a> ) 1-1
AC_categoryText	free text description of an Allowance or Charge - base type: string, max length: 70, (XPath: <a href="#">TEXDyFinOrdChange/terms/allowanceCharge/AC_categoryText</a> ) 1-1
AC_percent	amount of an Allowance or Charge as a percentage - base type: decimal, max inclusive: 100, fraction digits: 2, (XPath: <a href="#">TEXDyFinOrdChange/terms/allowanceCharge/AC_percent</a> ) 1-1
@act	action performed by the present line upon the referenced document line - base type: string, cod. table: NT5 <a href="http://www.moda-ml.net/moda-ml/repository/codelist/v2013-1/gc_NT5.xml">http://www.moda-ml.net/moda-ml/repository/codelist/v2013-1/gc_NT5.xml</a> (XPath: <a href="#">TEXDyFinOrdChange/TFCXbody/TFCXitem/@act</a> ) [Required]
added	additional code of the product (complementing the formers) - base type: string, max length: 15, (XPath: <a href="#">TEXDyFinOrdChange/TFCXbody/TFCXitem/fabricProd/texCode/added</a> ) 0-9 - note: <i>here an additional codification (see table T44) can be specified</i> (XPath: <a href="#">TEXDyFinOrdChange/TFCXbody/TFCXitem/fabricComponent/texCode/added</a> ) 0-9 - note: <i>here an additional codification (see table T44) can be specified</i>
@addType	qualifier of the additional coding of a product - base type: string, cod. table: T44 <a href="http://www.moda-ml.net/moda-ml/repository/codelist/v2013-1/gc_T44.xml">http://www.moda-ml.net/moda-ml/repository/codelist/v2013-1/gc_T44.xml</a> (XPath: <a href="#">TEXDyFinOrdChange/TFCXbody/TFCXitem/fabricProd/texCode/added/@addType</a> ) [Optional] (XPath: <a href="#">TEXDyFinOrdChange/TFCXbody/TFCXitem/fabricComponent/texCode/added/@addType</a> ) [Optional]
@application	force or similar condition (e.g. no. of revolutions) applied in a test as specified within the standard - base type: string, max length: 15, (XPath: <a href="#">TEXDyFinOrdChange/TFCXbody/TFCXitem/fabricProd/fabricSpecs/specValue/@application</a> ) [Optional] (XPath: <a href="#">TEXDyFinOrdChange/TFCXbody/TFCXitem/fabMnfrOperation/texMachineSpecs/specValue/@application</a> ) [Optional]
art	article number of the product - base type: string, max length: 25, (XPath: <a href="#">TEXDyFinOrdChange/TFCXbody/TFCXitem/fabricComponent/texCode/art</a> ) 1-1 - note: <i>can be used either for the base-article (excluding pattern/colour) or for the SKU</i> (XPath: <a href="#">TEXDyFinOrdChange/TFCXbody/TFCXitem/fabricProd/texCode/art</a> ) 1-1 - note: <i>can be used either for the base-article (excluding pattern/colour) or for the SKU</i>
carrier	identification of the transport carrier - base type: string, max length: 40, (XPath: <a href="#">TEXDyFinOrdChange/terms/transInfo/carrier</a> ) 0-1
city	name of the city (town, village) - base type: string, max length: 40, (XPath: <a href="#">TEXDyFinOrdChange/TFCXbody/TFCXitem/thirdParty/city</a> ) 0-1 (XPath: <a href="#">TEXDyFinOrdChange/TFCXheader/thirdParty/city</a> ) 0-1 (XPath: <a href="#">TEXDyFinOrdChange/TFCXheader/subContractor/city</a> ) 0-1 (XPath: <a href="#">TEXDyFinOrdChange/TFCXheader/buyer/city</a> ) 0-1

@codeList	<p>it specifies the URL where the list of codes used to make an instance of the element can be found</p> <ul style="list-style-type: none"> <li>- base type: string, max length: 255, (XPath: <a href="#">TEXDyFinOrdChange/terms/allowanceCharge/dtScheme/note/@codeList</a>) [Optional]</li> <li>- nota: <i>must be used to provide (URL) the list of codes used in "noteLabel"</i> (XPath: <a href="#">TEXDyFinOrdChange/TFCXbody/TFCXitem/fabMnfrOperation/note/@codeList</a>) [Optional]</li> <li>- nota: <i>must be used to provide (URL) the list of codes used in "noteLabel"</i> (XPath: <a href="#">TEXDyFinOrdChange/TFCXbody/TFCXitem/fabricComponent/texCode/art/@codeList</a>) [Optional]</li> <li>- nota: <i>this attribute should be ALTERNATIVE to the others</i> (XPath: <a href="#">TEXDyFinOrdChange/TFCXbody/TFCXitem/fabricComponent/texCode/pattern/@codeList</a>) [Optional]</li> <li>- nota: <i>this attribute should be ALTERNATIVE to the others</i> (XPath: <a href="#">TEXDyFinOrdChange/TFCXheader/note/@codeList</a>) [Optional]</li> <li>- nota: <i>must be used to provide (URL) the list of codes used in "noteLabel"</i> (XPath: <a href="#">TEXDyFinOrdChange/TFCXbody/TFCXitem/dtScheme/legalRef/@codeList</a>) [Required]</li> <li>(XPath: <a href="#">TEXDyFinOrdChange/TFCXbody/TFCXitem/fabricComponent/note/@codeList</a>) [Optional]</li> <li>- nota: <i>must be used to provide (URL) the list of codes used in "noteLabel"</i> (XPath: <a href="#">TEXDyFinOrdChange/TFCXbody/TFCXitem/dtScheme/note/@codeList</a>) [Optional]</li> <li>- nota: <i>must be used to provide (URL) the list of codes used in "noteLabel"</i> (XPath: <a href="#">TEXDyFinOrdChange/TFCXbody/TFCXitem/fabricProd/texCode/art/@codeList</a>) [Optional]</li> <li>- nota: <i>this attribute should be ALTERNATIVE to the others</i> (XPath: <a href="#">TEXDyFinOrdChange/TFCXbody/TFCXitem/fabricComponent/texCode/color/@codeList</a>) [Optional]</li> <li>- nota: <i>this attribute should be ALTERNATIVE to the others</i> (XPath: <a href="#">TEXDyFinOrdChange/TFCXbody/TFCXitem/fabricProd/texCode/color/@codeList</a>) [Optional]</li> <li>- nota: <i>this attribute should be ALTERNATIVE to the others</i> (XPath: <a href="#">TEXDyFinOrdChange/TFCXbody/TFCXitem/fabricProd/texCode/pattern/@codeList</a>) [Optional]</li> <li>- nota: <i>this attribute should be ALTERNATIVE to the others</i> (XPath: <a href="#">TEXDyFinOrdChange/terms/allowanceCharge/dtScheme/legalRef/@codeList</a>) [Required]</li> <li>(XPath: <a href="#">TEXDyFinOrdChange/TFCXbody/TFCXitem/fabricProd/note/@codeList</a>) [Optional]</li> <li>- nota: <i>must be used to provide (URL) the list of codes used in "noteLabel"</i></li> </ul>
color	<p>colour number of the product, when not included in the model or fabric code</p> <ul style="list-style-type: none"> <li>- base type: string, max length: 15, (XPath: <a href="#">TEXDyFinOrdChange/TFCXbody/TFCXitem/fabricComponent/texCode/color</a>) 0-1 (XPath: <a href="#">TEXDyFinOrdChange/TFCXbody/TFCXitem/fabricProd/texCode/color</a>) 0-1</li> </ul>
country	<p>code of the nation</p> <ul style="list-style-type: none"> <li>- base type: string, cod. table: T10 <a href="http://www.moda-ml.net/moda-ml/repository/codelist/v2013-1/gc_T10.xml">http://www.moda-ml.net/moda-ml/repository/codelist/v2013-1/gc_T10.xml</a> (XPath: <a href="#">TEXDyFinOrdChange/TFCXheader/subContractor/country</a>) 0-1 (XPath: <a href="#">TEXDyFinOrdChange/TFCXheader/thirdParty/country</a>) 0-1 (XPath: <a href="#">TEXDyFinOrdChange/TFCXbody/TFCXitem/thirdParty/country</a>) 0-1 (XPath: <a href="#">TEXDyFinOrdChange/TFCXheader/buyer/country</a>) 0-1</li> </ul>
@CTest	<p>indicates the need to execute a colour test before the operation</p> <ul style="list-style-type: none"> <li>- base type: string, cod. table: NT38 <a href="http://www.moda-ml.net/moda-ml/repository/codelist/v2013-1/gc_NT38.xml">http://www.moda-ml.net/moda-ml/repository/codelist/v2013-1/gc_NT38.xml</a> (XPath: <a href="#">TEXDyFinOrdChange/TFCXbody/TFCXitem/fabricProd/@CTest</a>) [Optional]</li> </ul>
@CV	<p>coefficient of variation (CV) of a measurement</p> <ul style="list-style-type: none"> <li>- base type: decimal, (XPath: <a href="#">TEXDyFinOrdChange/TFCXbody/TFCXitem/fabricProd/fabricSpecs/specValue/@CV</a>) [Optional]</li> </ul>

	(XPath: TEXDyFinOrdChange/TFCXbody/TFCXitem/fabMnfrOperation/texMachineSpecs/specValue/@CV) [Optional]
@dateForm	format used for the date - base type: string, cod. table: NT29 <a href="http://www.moda-ml.net/moda-ml/repository/codelist/v2013-1/gc_NT29.xml">http://www.moda-ml.net/moda-ml/repository/codelist/v2013-1/gc_NT29.xml</a> (XPath: TEXDyFinOrdChange/TFCXbody/TFCXitem/refDoc/docDate/@dateForm) [Optional] (XPath: TEXDyFinOrdChange/TFCXbody/TFCXitem/fabricComponent/refDoc/docDate/@dateForm) [Optional] (XPath: TEXDyFinOrdChange/TFCXheader/refDoc/docDate/@dateForm) [Optional] (XPath: TEXDyFinOrdChange/TFCXbody/TFCXitem/deliveryDate/@dateForm) [Optional] (XPath: TEXDyFinOrdChange/TFCXheader/msgDate/@dateForm) [Optional] (XPath: TEXDyFinOrdChange/TFCXbody/TFCXitem/fabMnfrOperation/refDoc/docDate/@dateForm) [Optional]
deliveryDate	date of delivery of goods, requested or promised in the purchase process, according to one of the patterns YYYY-MM-DD, YYYY-MM-DD:HH-MM or YYYY-WW. - base type: string, (XPath: TEXDyFinOrdChange/TFCXbody/TFCXitem/deliveryDate) 0-1
deliveryPlace	place of delivery of goods, ultimate or related to a given leg - base type: string, max length: 40, (XPath: TEXDyFinOrdChange/terms/transInfo/deliveryPlace) 0-1
dept	name or code of a contact department within a Party - base type: string, max length: 40, (XPath: TEXDyFinOrdChange/TFCXheader/thirdParty/dept) 0-1 (XPath: TEXDyFinOrdChange/TFCXbody/TFCXitem/thirdParty/dept) 0-1 (XPath: TEXDyFinOrdChange/TFCXheader/buyer/dept) 0-1 (XPath: TEXDyFinOrdChange/TFCXheader/subContractor/dept) 0-1
description	free text description of a product - base type: string, max length: 70, (XPath: TEXDyFinOrdChange/TFCXbody/TFCXitem/fabricProd/ texCode/description) 0-1 (XPath: TEXDyFinOrdChange/TFCXbody/TFCXitem/fabricComponent/texCode/description) 0-1
docDate	date of issue of the referenced document, according to one of the patterns YYYY-MM-DD, YYYY-MM-DD:HH-MM or YYYY-WW. - base type: string, (XPath: TEXDyFinOrdChange/TFCXbody/TFCXitem/fabricComponent/refDoc/docDate) 0-1 (XPath: TEXDyFinOrdChange/TFCXbody/TFCXitem/refDoc/docDate) 0-1 (XPath: TEXDyFinOrdChange/TFCXheader/refDoc/docDate) 0-1 (XPath: TEXDyFinOrdChange/TFCXbody/TFCXitem/fabMnfrOperation/refDoc/docDate) 0-1
docID	identification number of the referenced document SINCE 2008-1 ITS USE IN THE HEADER IS DISCOURAGED (REPLACED BY msgID) - base type: string, max length: 80, (XPath: TEXDyFinOrdChange/TFCXbody/TFCXitem/fabMnfrOperation/refDoc/docID) 1-2 (XPath: TEXDyFinOrdChange/TFCXbody/TFCXitem/refDoc/docID) 1-2 (XPath: TEXDyFinOrdChange/TFCXheader/refDoc/docID) 1-2 (XPath: TEXDyFinOrdChange/TFCXbody/TFCXitem/fabricComponent/refDoc/docID) 1-2 (XPath: TEXDyFinOrdChange/TFCXheader/docID) 0-1
@docType	type or class to which the referenced document belongs - base type: string, cod. table: T21 <a href="http://www.moda-ml.net/moda-ml/repository/codelist/v2013-1/gc_T21.xml">http://www.moda-ml.net/moda-ml/repository/codelist/v2013-1/gc_T21.xml</a> (XPath: TEXDyFinOrdChange/TFCXbody/TFCXitem/fabMnfrOperation/refDoc/@docType) [Required] (XPath: TEXDyFinOrdChange/TFCXbody/TFCXitem/refDoc/@docType) [Required] (XPath:

	<p>TEXDyFinOrdChange/TFCXbody/TFCXitem/fabricComponent/refDoc/@docType) [Required]  (XPath: TEXDyFinOrdChange/TFCXheader/refDoc/@docType) [Required]</p>
dyeN	<p>number of the dying batch of a textile product  - base type: string, max length: 15,  (XPath: TEXDyFinOrdChange/TFCXbody/TFCXitem/fabricProd/piece/dyeN) 0-1  (XPath: TEXDyFinOrdChange/TFCXbody/TFCXitem/fabricProd/pieceChain/dyeN) 0-1</p>
@email	<p>electronic mail address of the contact person within a Party  - base type: string, max length: 80,  (XPath: TEXDyFinOrdChange/TFCXbody/TFCXitem/thirdParty/person/@email) [Optional]  (XPath: TEXDyFinOrdChange/TFCXheader/buyer/person/@email) [Optional]  (XPath: TEXDyFinOrdChange/TFCXheader/thirdParty/person/@email) [Optional]  (XPath: TEXDyFinOrdChange/TFCXheader/subContractor/person/@email) [Optional]</p>
@endUse	<p>specifies the final use of the fabric  - base type: string, cod. table: NT4  <a href="http://www.moda-ml.net/moda-ml/repository/codelist/v2013-1/gc_NT4.xml">http://www.moda-ml.net/moda-ml/repository/codelist/v2013-1/gc_NT4.xml</a>  (XPath: TEXDyFinOrdChange/TFCXbody/TFCXitem/fabricProd/piece/@endUse) [Optional]</p>
EPC	<p>identifier used for tracing a physical item with RFID technology  - base type: string,  (XPath: TEXDyFinOrdChange/TFCXbody/TFCXitem/fabricProd/piece/EPC) 0-1</p>
fabricChar	<p>code of the physical or mechanical parameter used to define a "technical characteristic of the fabric" (see Fabric technical sheet)  - base type: string, cod. table: T13  <a href="http://www.moda-ml.net/moda-ml/repository/codelist/v2013-1/gc_T13.xml">http://www.moda-ml.net/moda-ml/repository/codelist/v2013-1/gc_T13.xml</a>  (XPath: TEXDyFinOrdChange/TFCXbody/TFCXitem/fabricProd/fabricSpecs/fabricChar) 1-1</p>
fabricCharText	<p>free text describing the physical or mechanical parameter used to define a "technical characteristic of the fabric"  - base type: string, max length: 40,  (XPath: TEXDyFinOrdChange/TFCXbody/TFCXitem/fabricProd/fabricSpecs/fabricCharText) 1-1</p>
fabricWidth	<p>width of the fabric as technical specification  - base type: decimal, min inclusive: 0, fraction digits: 2,  (XPath: TEXDyFinOrdChange/TFCXbody/TFCXitem/fabricProd/fabricWidth) 0-1</p>
@fax	<p>fax number of the contact person within a Party  - base type: string, max length: 35,  (XPath: TEXDyFinOrdChange/TFCXheader/subContractor/person/@fax) [Optional]  (XPath: TEXDyFinOrdChange/TFCXheader/buyer/person/@fax) [Optional]  (XPath: TEXDyFinOrdChange/TFCXheader/thirdParty/person/@fax) [Optional]  (XPath: TEXDyFinOrdChange/TFCXbody/TFCXitem/thirdParty/person/@fax) [Optional]</p>
@fibre	<p>type of fibre used in a textile product  - base type: string, cod. table: T19  <a href="http://www.moda-ml.net/moda-ml/repository/codelist/v2013-1/gc_T19.xml">http://www.moda-ml.net/moda-ml/repository/codelist/v2013-1/gc_T19.xml</a>  (XPath: TEXDyFinOrdChange/TFCXbody/TFCXitem/fabricProd/fabricCompos/percCompos/@fibre) [Required]</p>
@finDiscount	<p>financial discount applied for payment by the date specified  - base type: decimal, min inclusive: 0, max inclusive: 100, fraction digits: 2,  (XPath: TEXDyFinOrdChange/terms/payment/@finDiscount) [Optional]</p>
@finSurcharge	<p>financial surcharge applied for payment after the date specified  - base type: decimal, min inclusive: 0, max inclusive: 100, fraction digits: 2,  (XPath: TEXDyFinOrdChange/terms/payment/@finSurcharge) [Optional]</p>



grossWeight	the gross weight of the overall goods supply, declared for transport or customs purpose - base type: decimal, min inclusive: 0, fraction digits: 2, (XPath: TEXDyFinOrdChange/terms/transInfo/grossWeight) 0-1
id	primary identification code of a Party; it is recommended the format: nation code (ISO 3166) + VAT identification number (11 crt), with the qualifier "numberingOrg"= MF - base type: string, max length: 15, (XPath: TEXDyFinOrdChange/TFCXheader/thirdParty/id) 1-1 (XPath: TEXDyFinOrdChange/TFCXheader/buyer/id) 1-1 (XPath: TEXDyFinOrdChange/TFCXbody/TFCXitem/thirdParty/id) 1-1 (XPath: TEXDyFinOrdChange/TFCXheader/subContractor/id) 1-1
incoTerm	specification of the terms of trade (INCOTERMS) - base type: string, cod. table: T3 <a href="http://www.moda-ml.net/moda-ml/repository/codelist/v2013-1/gc_T3.xml">http://www.moda-ml.net/moda-ml/repository/codelist/v2013-1/gc_T3.xml</a> (XPath: TEXDyFinOrdChange/terms/trade/incoTerm) 1-1
incoTermText	free text specifying the terms of trade (incoterm, location) - base type: string, max length: 70, (XPath: TEXDyFinOrdChange/terms/trade/incoTermText) 1-1
itemID	number of the line/item of the referenced document - base type: string, max length: 6, (XPath: TEXDyFinOrdChange/TFCXheader/refDoc/itemID) 0-1 (XPath: TEXDyFinOrdChange/TFCXbody/TFCXitem/fabricComponent/refDoc/itemID) 0-1 (XPath: TEXDyFinOrdChange/TFCXbody/TFCXitem/refDoc/itemID) 0-1 (XPath: TEXDyFinOrdChange/TFCXbody/TFCXitem/fabMnfrOperation/refDoc/itemID) 0-1
jobName	description of the elementary job - base type: string, max length: 40, (XPath: TEXDyFinOrdChange/TFCXbody/TFCXitem/fabMnfrOperation/jobName) 1-1
legalName	legal name of a Party - base type: string, max length: 80, (XPath: TEXDyFinOrdChange/TFCXheader/buyer/legalName) 0-1 (XPath: TEXDyFinOrdChange/TFCXbody/TFCXitem/thirdParty/legalName) 0-1 (XPath: TEXDyFinOrdChange/TFCXheader/thirdParty/legalName) 0-1 (XPath: TEXDyFinOrdChange/TFCXheader/subContractor/legalName) 0-1
legalRef	legal reference of the duty or tax or fee category - base type: string, (XPath: TEXDyFinOrdChange/TFCXbody/TFCXitem/dtScheme/legalRef) 0-1 (XPath: TEXDyFinOrdChange/terms/allowanceCharge/dtScheme/legalRef) 0-1
lineN	number of the line item of the present message (xml document) - base type: positiveInteger, min inclusive: 1, max inclusive: 9999, (XPath: TEXDyFinOrdChange/TFCXbody/TFCXitem/lineN) 1-1
@listName	it specifies the name of the list of codes used to make an instance of the element - base type: string, max length: 40, (XPath: TEXDyFinOrdChange/TFCXbody/TFCXitem/fabricProd/texCode/pattern/@listName) [Optional] - nota: <i>this attribute should always be used coupled with "numberingOrg"</i> (XPath: TEXDyFinOrdChange/TFCXbody/TFCXitem/fabricComponent/texCode/art/@listName) [Optional] - nota: <i>this attribute should always be used coupled with "numberingOrg"</i> (XPath: TEXDyFinOrdChange/TFCXbody/TFCXitem/fabricComponent/texCode/color/@listName) [Optional] - nota: <i>this attribute should always be used coupled with "numberingOrg"</i> (XPath: TEXDyFinOrdChange/TFCXbody/TFCXitem/fabricProd/texCode/color/@listName) [Optional] - nota: <i>this attribute should always be used coupled with "numberingOrg"</i> (XPath: TEXDyFinOrdChange/TFCXbody/TFCXitem/fabricProd/

	<p><code>texCode/art/@listName</code>) [Optional]</p> <p>- nota: <i>this attribute should always be used coupled with “numberingOrg”</i></p> <p>(XPath: <code>TEXDyFinOrdChange/TFCXbody/TFCXitem/fabricComponent/texCode/pattern/@listName</code>) [Optional]</p> <p>- nota: <i>this attribute should always be used coupled with “numberingOrg”</i></p>
@listVersion	<p>it specifies the version of the list of codes used to make an instance of the element</p> <p>- base type: string, max length: 6,</p> <p>(XPath: <code>TEXDyFinOrdChange/TFCXbody/TFCXitem/fabricComponent/texCode/art/@listVersion</code>) [Optional]</p> <p>- nota: <i>this attribute should always be used coupled with “numberingOrg” and “listName”</i></p> <p>(XPath: <code>TEXDyFinOrdChange/TFCXbody/TFCXitem/fabricComponent/texCode/pattern/@listVersion</code>) [Optional]</p> <p>- nota: <i>this attribute should always be used coupled with “numberingOrg” and “listName”</i></p> <p>(XPath: <code>TEXDyFinOrdChange/TFCXbody/TFCXitem/fabricProd/texCode/color/@listVersion</code>) [Optional]</p> <p>- nota: <i>this attribute should always be used coupled with “numberingOrg” and “listName”</i></p> <p>(XPath: <code>TEXDyFinOrdChange/TFCXbody/TFCXitem/fabricComponent/texCode/color/@listVersion</code>) [Optional]</p> <p>- nota: <i>this attribute should always be used coupled with “numberingOrg” and “listName”</i></p> <p>(XPath: <code>TEXDyFinOrdChange/TFCXbody/TFCXitem/fabricProd/texCode/art/@listVersion</code>) [Optional]</p> <p>- nota: <i>this attribute should always be used coupled with “numberingOrg” and “listName”</i></p> <p>(XPath: <code>TEXDyFinOrdChange/TFCXbody/TFCXitem/fabricProd/texCode/pattern/@listVersion</code>) [Optional]</p> <p>- nota: <i>this attribute should always be used coupled with “numberingOrg” and “listName”</i></p>
location	<p>specification of a location</p> <p>- base type: string, max length: 40,</p> <p>(XPath: <code>TEXDyFinOrdChange/terms/trade/location</code>) 0-1</p> <p>- note: <i>place to which the INCOTERM applies</i></p> <p>(XPath: <code>TEXDyFinOrdChange/TFCXbody/TFCXitem/fabricComponent/location</code>) 0-1</p> <p>- note: <i>it may be used to specify the location where lie the pieces that the Subcontractor must use the commissioned work operation</i></p>
@logo	<p>company logo (URL of the image jpeg or gif). It is recommended that the width of the image does not exceed 640 pixel.</p> <p>- base type: string, max length: 255,</p> <p>(XPath: <code>TEXDyFinOrdChange/TFCXheader/buyer/@logo</code>) [Optional]</p>
lotN	<p>lot number of a product or batch number of the raw material</p> <p>- base type: string, max length: 15,</p> <p>(XPath: <code>TEXDyFinOrdChange/TFCXbody/TFCXitem/fabricProd/pieceChain/lotN</code>) 0-1</p> <p>(XPath: <code>TEXDyFinOrdChange/TFCXbody/TFCXitem/fabricProd/piece/lotN</code>) 0-1</p>
@LRI	<p>attribute usable to format a string according to a customized User rule (local rule)</p> <p>- base type: string, cod. table: NT3</p> <p><a href="http://www.moda-ml.net/moda-ml/repository/codelist/v2013-1/gc_NT3.xml">http://www.moda-ml.net/moda-ml/repository/codelist/v2013-1/gc_NT3.xml</a></p> <p>(XPath: <code>TEXDyFinOrdChange/terms/trade/location/@LRI</code>) [Optional]</p> <p>(XPath: <code>TEXDyFinOrdChange/TFCXbody/TFCXitem/fabricComponent/location/@LRI</code>) [Optional]</p>
@method	<p>standard protocol or method employed in a test to evaluate a characteristic or a parameter</p> <p>- base type: string, max length: 25,</p> <p>(XPath: <code>TEXDyFinOrdChange/TFCXbody/TFCXitem/fabricProd/fabricSpecs/specValue/@method</code>) [Optional]</p> <p>(XPath: <code>TEXDyFinOrdChange/TFCXbody/TFCXitem/fabMnfrOperation/texMachineSpecs/specValue/@method</code>) [Optional]</p>
mixMatch	<p>colour hue used for the match of garments</p> <p>- base type: string, max length: 15,</p>

	(XPath: <a href="#">TEXDyFinOrdChange/TFCXbody/TFCXitem/fabricProd/piece/mixMatch</a> ) 0-1
msgCurrency	currency used to express the monetary amounts of the message - base type: string, cod. table: T9 <a href="http://www.moda-ml.net/moda-ml/repository/codelist/v2013-1/gc_T9.xml">http://www.moda-ml.net/moda-ml/repository/codelist/v2013-1/gc_T9.xml</a> (XPath: <a href="#">TEXDyFinOrdChange/TFCXheader/msgCurrency</a> ) 0-1
msgDate	date of issue of the present message (xml document), according to one of the patterns YYYY-MM-YYYY-MM-DD:HH-MM or YYYY-WW. - base type: string, (XPath: <a href="#">TEXDyFinOrdChange/TFCXheader/msgDate</a> ) 1-1
@msgfunction	function performed by the present message with regards to the transmission - base type: string, cod. table: NT18 <a href="http://www.moda-ml.net/moda-ml/repository/codelist/v2013-1/gc_NT18.xml">http://www.moda-ml.net/moda-ml/repository/codelist/v2013-1/gc_NT18.xml</a> (XPath: <a href="#">TEXDyFinOrdChange/@msgfunction</a> ) [Optional]
msgID	key identifier of the document in the information system of the issuing Party - base type: string, max length: 35, (XPath: <a href="#">TEXDyFinOrdChange/TFCXheader/msgID</a> ) 0-1
msgN	identification number given to the message (xml document) by its issuer - base type: string, max length: 35, (XPath: <a href="#">TEXDyFinOrdChange/TFCXheader/msgN</a> ) 1-1
netWeight	the net weight of the overall goods supply, declared for transport or customs purpose - base type: decimal, min inclusive: 0, fraction digits: 2, (XPath: <a href="#">TEXDyFinOrdChange/terms/transInfo/netWeight</a> ) 0-1
note	free text or structured (computer processing) note. For note structuring use the attributes "noteLabel" and "codelist" - base type: string, max length: 350, (XPath: <a href="#">TEXDyFinOrdChange/TFCXbody/TFCXitem/fabricProd/note</a> ) 0-19 (XPath: <a href="#">TEXDyFinOrdChange/TFCXbody/TFCXitem/dtScheme/note</a> ) 0-19 (XPath: <a href="#">TEXDyFinOrdChange/terms/allowanceCharge/dtScheme/note</a> ) 0-19 (XPath: <a href="#">TEXDyFinOrdChange/TFCXbody/TFCXitem/fabMnfrOperation/note</a> ) 0-19 (XPath: <a href="#">TEXDyFinOrdChange/TFCXheader/note</a> ) 0-19 (XPath: <a href="#">TEXDyFinOrdChange/TFCXbody/TFCXitem/fabricComponent/note</a> ) 0-19
@noteLabel	subject qualifier of a note - base type: string, max length: 35, (XPath: <a href="#">TEXDyFinOrdChange/TFCXbody/TFCXitem/fabricComponent/note/@noteLabel</a> ) [Optional] - nota: <i>must be used to qualify the subject of the note</i> (XPath: <a href="#">TEXDyFinOrdChange/TFCXheader/note/@noteLabel</a> ) [Optional] - nota: <i>must be used to qualify the subject of the note</i> (XPath: <a href="#">TEXDyFinOrdChange/TFCXbody/TFCXitem/dtScheme/note/@noteLabel</a> ) [Optional] - nota: <i>must be used to qualify the subject of the note</i> (XPath: <a href="#">TEXDyFinOrdChange/TFCXbody/TFCXitem/fabricProd/note/@noteLabel</a> ) [Optional] - nota: <i>must be used to qualify the subject of the note</i> (XPath: <a href="#">TEXDyFinOrdChange/TFCXbody/TFCXitem/fabMnfrOperation/note/@noteLabel</a> ) [Optional] - nota: <i>must be used to qualify the subject of the note</i> (XPath: <a href="#">TEXDyFinOrdChange/terms/allowanceCharge/dtScheme/note/@noteLabel</a> ) [Optional] - nota: <i>must be used to qualify the subject of the note</i>
@numberingOrg	code specifying the organisation who has created or owns the coding or numbering system - base type: string, cod. table: NT6 <a href="http://www.moda-ml.net/moda-ml/repository/codelist/v2013-1/gc_NT6.xml">http://www.moda-ml.net/moda-ml/repository/codelist/v2013-1/gc_NT6.xml</a> (XPath: <a href="#">TEXDyFinOrdChange/TFCXbody/TFCXitem/fabricProd/note/@numberingOrg</a> ) [Optional]

(XPath: TEXDyFinOrdChange/TFCXheader/thirdParty/id/@numberingOrg) [Optional]  
(XPath: TEXDyFinOrdChange/TFCXbody/TFCXitem/fabricComponent/texCode/@numberingOrg) [Optional]  
(XPath: TEXDyFinOrdChange/TFCXbody/TFCXitem/fabricProd/pieceChain/pieceCut/serialN/@numberingOrg) [Optional]  
- nota: *here the issuer of the serial number must be specified (when different from the Supplier)*  
(XPath: TEXDyFinOrdChange/TFCXbody/TFCXitem/fabricComponent/texCode/color/@numberingOrg) [Optional]  
- nota: *this attribute should be used either single or coupled with "listName" and "listVersion"*  
(XPath: TEXDyFinOrdChange/TFCXbody/TFCXitem/fabricProd/piece/serialN/@numberingOrg) [Optional]  
- nota: *here the issuer of the serial number must be specified (when different from the Supplier)*  
(XPath: TEXDyFinOrdChange/TFCXheader/subContractor/id/@numberingOrg) [Optional]  
(XPath: TEXDyFinOrdChange/TFCXbody/TFCXitem/fabricProd/piece/EPC/@numberingOrg) [Optional]  
(XPath: TEXDyFinOrdChange/TFCXbody/TFCXitem/dtScheme/note/@numberingOrg) [Optional]  
(XPath: TEXDyFinOrdChange/TFCXbody/TFCXitem/fabricComponent/texCode/art/@numberingOrg) [Optional]  
- nota: *this attribute should be used either single or coupled with "listName" and "listVersion"*  
(XPath: TEXDyFinOrdChange/TFCXbody/TFCXitem/thirdParty/id/@numberingOrg) [Optional]  
(XPath: TEXDyFinOrdChange/TFCXbody/TFCXitem/fabricProd/piece/dyeN/@numberingOrg) [Optional]  
(XPath: TEXDyFinOrdChange/TFCXbody/TFCXitem/fabricProd/piece/mixMatch/@numberingOrg) [Optional]  
(XPath: TEXDyFinOrdChange/TFCXbody/TFCXitem/fabricComponent/texCode/pattern/@numberingOrg) [Optional]  
- nota: *this attribute should be used either single or coupled with "listName" and "listVersion"*  
(XPath: TEXDyFinOrdChange/TFCXbody/TFCXitem/fabricProd/piece/lotN/@numberingOrg) [Optional]  
(XPath: TEXDyFinOrdChange/TFCXbody/TFCXitem/fabricProd/piece/packageN/@numberingOrg) [Optional]  
(XPath: TEXDyFinOrdChange/TFCXheader/note/@numberingOrg) [Optional]  
(XPath: TEXDyFinOrdChange/TFCXbody/TFCXitem/fabricComponent/note/@numberingOrg) [Optional]  
(XPath: TEXDyFinOrdChange/TFCXheader/docID/@numberingOrg) [Optional]  
- nota: *here can be specified whose document numbering is used (e.g.: Client, Supplier, ..)*  
(XPath: TEXDyFinOrdChange/TFCXbody/TFCXitem/fabricProd/pieceChain/serialN/@numberingOrg) [Optional]  
- nota: *here the issuer of the serial number must be specified (when different from the Supplier)*  
(XPath: TEXDyFinOrdChange/TFCXheader/refDoc/docID/@numberingOrg) [Optional]  
- nota: *here can be specified whose document numbering is used (e.g.: Client, Supplier, ..)*  
(XPath: TEXDyFinOrdChange/TFCXbody/TFCXitem/fabricComponent/refDoc/docID/@numberingOrg) [Optional]  
- nota: *here can be specified whose document numbering is used (e.g.: Client, Supplier, ..)*  
(XPath: TEXDyFinOrdChange/TFCXbody/TFCXitem/fabricProd/texCode/pattern/@numberingOrg) [Optional]  
- nota: *this attribute should be used either single or coupled with "listName" and "listVersion"*  
(XPath: TEXDyFinOrdChange/TFCXbody/TFCXitem/fabricProd/texCode/art/@numberingOrg) [Optional]  
- nota: *this attribute should be used either single or coupled with "listName" and "listVersion"*  
(XPath: TEXDyFinOrdChange/TFCXbody/TFCXitem/fabricProd/texCode/@numberingOrg) [Optional]  
(XPath: TEXDyFinOrdChange/TFCXbody/TFCXitem/refDoc/docID/@numberingOrg) [Optional]  
- nota: *here can be specified whose document numbering is used (e.g.: Client, Supplier, ..)*  
(XPath: TEXDyFinOrdChange/TFCXbody/TFCXitem/fabricProd/texCode/added/@numberingOrg) [Optional]  
(XPath: TEXDyFinOrdChange/TFCXbody/TFCXitem/fabricProd/texCode/color/@numberingOrg) [Optional]  
- nota: *this attribute should be used either single or coupled with "listName" and "listVersion"*  
(XPath: TEXDyFinOrdChange/TFCXbody/TFCXitem/fabricComponent/serialN/@numberingOrg) [Optional]  
- nota: *here the issuer of the serial number must be specified (when different from the Supplier)*  
(XPath: TEXDyFinOrdChange/TFCXbody/TFCXitem/fabricProd/

	<p>pieceChain/dyeN/@numberingOrg) [Optional]  (XPath: TEXDyFinOrdChange/terms/allowanceCharge/  dtScheme/note/@numberingOrg) [Optional]  (XPath: TEXDyFinOrdChange/TFCXbody/TFCXitem/fabricProd/  pieceChain/packageN/@numberingOrg) [Optional]  (XPath: TEXDyFinOrdChange/TFCXheader/buyer/id/@numberingOrg) [Optional]  (XPath:  TEXDyFinOrdChange/TFCXbody/TFCXitem/fabricComponent/texCode/added/@numberingOrg) [Optional]  (XPath: TEXDyFinOrdChange/TFCXbody/TFCXitem/fabricProd/  pieceChain/lotN/@numberingOrg) [Optional]  (XPath:  TEXDyFinOrdChange/TFCXbody/TFCXitem/fabMnfrOperation/note/@numberingOrg) [Optional]  (XPath:  TEXDyFinOrdChange/TFCXbody/TFCXitem/fabMnfrOperation/refDoc/docID/@numberingOrg) [Optional]  - nota: <i>here can be specified whose document numbering is used (e.g.: Client, Supplier, ..)</i></p>
@packageContainerN	<p>reference usable to indicate the outer package containing this package  - base type: string, max length: 25,  (XPath: TEXDyFinOrdChange/TFCXbody/TFCXitem/fabricProd/  pieceChain/packageN/@packageContainerN) [Optional]  (XPath: TEXDyFinOrdChange/TFCXbody/TFCXitem/fabricProd/  piece/packageN/@packageContainerN) [Optional]</p>
packageN	<p>serial number used to identify a transport package  - base type: string, max length: 25,  (XPath: TEXDyFinOrdChange/TFCXbody/TFCXitem/fabricProd/  piece/packageN) 0-1  - note: <i>here the transport package containing the piece can be identified</i>  (XPath: TEXDyFinOrdChange/TFCXbody/TFCXitem/fabricProd/  pieceChain/packageN) 0-1</p>
@part	<p>percent fraction of a total payment  - base type: decimal, min inclusive: 1, max inclusive: 99, fraction digits: 2,  (XPath: TEXDyFinOrdChange/terms/insPayment/@part) [Required]  - nota: <i>here the % value of each installment must be indicated</i></p>
pattern	<p>pattern/design number of the product, when not included in the article code  - base type: string, max length: 15,  (XPath: TEXDyFinOrdChange/TFCXbody/TFCXitem/fabricProd/  texCode/pattern) 0-1  (XPath:  TEXDyFinOrdChange/TFCXbody/TFCXitem/fabricComponent/texCode/pattern) 0-1</p>
payMode	<p>way or means of payment  - base type: string, cod. table: T2  <a href="http://www.moda-ml.net/moda-ml/repository/codelist/v2013-1/gc_T2.xml">http://www.moda-ml.net/moda-ml/repository/codelist/v2013-1/gc_T2.xml</a>  (XPath: TEXDyFinOrdChange/terms/insPayment/payMode) 0-1  (XPath: TEXDyFinOrdChange/terms/payment/payMode) 0-1</p>
payTerm	<p>code specifying the terms or time by which the payment must be done  - base type: string, cod. table: T1  <a href="http://www.moda-ml.net/moda-ml/repository/codelist/v2013-1/gc_T1.xml">http://www.moda-ml.net/moda-ml/repository/codelist/v2013-1/gc_T1.xml</a>  (XPath: TEXDyFinOrdChange/terms/payment/payTerm) 1-1  (XPath: TEXDyFinOrdChange/terms/insPayment/payTerm) 1-1</p>
payTermText	<p>free text specifying the terms by which the payment must be done (time/mode or means)  - base type: string, max length: 40,  (XPath: TEXDyFinOrdChange/terms/insPayment/payTermText) 1-1  (XPath: TEXDyFinOrdChange/terms/payment/payTermText) 1-1</p>
pcTolerance	<p>percent deviation tolerated on the value of a measurement (it must have a plus or minus sign)  - base type: decimal, min inclusive: 0, max inclusive: 100, total digits: 2,  (XPath: TEXDyFinOrdChange/TFCXbody/TFCXitem/fabricProd/  fabricSpecs/pcTolerance) 0-2  (XPath:  TEXDyFinOrdChange/TFCXbody/TFCXitem/fabMnfrOperation/texMachineSpecs/pcTolerance) 0-2</p>

percCompos	<p>fiber rate in the product composition</p> <p>- base type: decimal, min inclusive: 0, max inclusive: 100, fraction digits: 2,  (XPath: <a href="#">TEXDyFinOrdChange/TFCXbody/TFCXitem/fabricProd/fabricCompos/percCompos</a>) 1-9</p>
person	<p>name of the contact person within a Party</p> <p>- base type: string, max length: 40,  (XPath: <a href="#">TEXDyFinOrdChange/TFCXheader/buyer/person</a>) 0-1  (XPath: <a href="#">TEXDyFinOrdChange/TFCXheader/subContractor/person</a>) 0-1  (XPath: <a href="#">TEXDyFinOrdChange/TFCXbody/TFCXitem/thirdParty/person</a>) 0-1  (XPath: <a href="#">TEXDyFinOrdChange/TFCXheader/thirdParty/person</a>) 0-1</p>
@phone	<p>phone number of the contact person within a Party</p> <p>- base type: string, max length: 35,  (XPath: <a href="#">TEXDyFinOrdChange/TFCXheader/subContractor/person/@phone</a>) [Optional]  (XPath: <a href="#">TEXDyFinOrdChange/TFCXheader/buyer/person/@phone</a>) [Optional]  (XPath: <a href="#">TEXDyFinOrdChange/TFCXheader/thirdParty/person/@phone</a>) [Optional]  (XPath: <a href="#">TEXDyFinOrdChange/TFCXbody/TFCXitem/thirdParty/person/@phone</a>) [Optional]</p>
pieceAllow	<p>allowance required or accorded for the piece</p> <p>- base type: decimal, fraction digits: 2,  (XPath: <a href="#">TEXDyFinOrdChange/TFCXbody/TFCXitem/fabricProd/piece/pieceAllow</a>) 0-1</p>
pieceCutWidth	<p>effective usable width of the fabric piece (for garment manufacturing)</p> <p>- base type: decimal, min inclusive: 0, fraction digits: 2,  (XPath: <a href="#">TEXDyFinOrdChange/TFCXbody/TFCXitem/fabricProd/piece/pieceCutWidth</a>) 0-1</p>
pieceInnWrap1	<p>code specifying the type of inner wrapping/packing used for the fabric piece</p> <p>- base type: string, cod. table: T4  <a href="http://www.moda-ml.net/moda-ml/repository/codelist/v2013-1/gc_T4.xml">http://www.moda-ml.net/moda-ml/repository/codelist/v2013-1/gc_T4.xml</a>  (XPath: <a href="#">TEXDyFinOrdChange/TFCXbody/TFCXitem/fabricProd/piece/piecePack/pieceInnWrap1</a>) 1-1  (XPath: <a href="#">TEXDyFinOrdChange/TFCXbody/TFCXitem/fabricProd/pieceChain/piecePack/pieceInnWrap1</a>) 1-1</p>
pieceInnWrap2	<p>code sub-specifying the type of inner wrapping/packing used for the fabric piece</p> <p>- base type: string, cod. table: T5  <a href="http://www.moda-ml.net/moda-ml/repository/codelist/v2013-1/gc_T5.xml">http://www.moda-ml.net/moda-ml/repository/codelist/v2013-1/gc_T5.xml</a>  (XPath: <a href="#">TEXDyFinOrdChange/TFCXbody/TFCXitem/fabricProd/piece/piecePack/pieceInnWrap2</a>) 0-1  (XPath: <a href="#">TEXDyFinOrdChange/TFCXbody/TFCXitem/fabricProd/pieceChain/piecePack/pieceInnWrap2</a>) 0-1</p>
pieceLength	<p>length of the piece</p> <p>- base type: decimal, min inclusive: 0, fraction digits: 2,  (XPath: <a href="#">TEXDyFinOrdChange/TFCXbody/TFCXitem/fabricProd/pieceChain/pieceLength</a>) 0-1  (XPath: <a href="#">TEXDyFinOrdChange/TFCXbody/TFCXitem/fabricProd/pieceChain/pieceCut/pieceLength</a>) 0-1  (XPath: <a href="#">TEXDyFinOrdChange/TFCXbody/TFCXitem/fabricProd/piece/pieceLength</a>) 0-1</p>
pieceOutWrap	<p>code specifying the type of outer wrapping or packing used for the fabric piece</p> <p>- base type: string, cod. table: T6  <a href="http://www.moda-ml.net/moda-ml/repository/codelist/v2013-1/gc_T6.xml">http://www.moda-ml.net/moda-ml/repository/codelist/v2013-1/gc_T6.xml</a>  (XPath: <a href="#">TEXDyFinOrdChange/TFCXbody/TFCXitem/fabricProd/piece/piecePack/pieceOutWrap</a>) 0-1  (XPath: <a href="#">TEXDyFinOrdChange/TFCXbody/TFCXitem/fabricProd/pieceChain/piecePack/pieceOutWrap</a>) 0-1</p>
piecePackText	<p>free text specifying the type of wrapping or packing used for the fabric piece</p> <p>- base type: string, max length: 40,  (XPath: <a href="#">TEXDyFinOrdChange/TFCXbody/TFCXitem/fabricProd/</a></p>

	<p>piece/piecePack/piecePackText) 1-1  (XPath: TEXDyFinOrdChange/TFCXbody/TFCXitem/fabricProd/pieceChain/piecePack/piecePackText) 1-1</p>
pieceStatus	<p>code used to describe the status of a fabric piece after the control  - base type: string, cod. table: T52  <a href="http://www.moda-ml.net/moda-ml/repository/codelist/v2013-1/gc_T52.xml">http://www.moda-ml.net/moda-ml/repository/codelist/v2013-1/gc_T52.xml</a>  (XPath: TEXDyFinOrdChange/TFCXbody/TFCXitem/fabricProd/piece/pieceStatus) 0-1</p>
pieceWeight	<p>effective total weight of the fabric piece  - base type: decimal, min inclusive: 0, fraction digits: 2,  (XPath: TEXDyFinOrdChange/TFCXbody/TFCXitem/fabricProd/piece/pieceWeight) 0-1  (XPath: TEXDyFinOrdChange/TFCXbody/TFCXitem/fabricProd/pieceChain/pieceWeight) 0-1  (XPath: TEXDyFinOrdChange/TFCXbody/TFCXitem/fabricProd/pieceChain/pieceCut/pieceWeight) 0-1</p>
pieceWeightM	<p>effective weight per metre of the fabric piece  - base type: decimal, min inclusive: 0, fraction digits: 2,  (XPath: TEXDyFinOrdChange/TFCXbody/TFCXitem/fabricProd/piece/pieceWeightM) 0-1</p>
pieceWidth	<p>effective width of the fabric piece  - base type: decimal, min inclusive: 0, fraction digits: 2,  (XPath: TEXDyFinOrdChange/TFCXbody/TFCXitem/fabricProd/pieceChain/pieceWidth) 0-1  (XPath: TEXDyFinOrdChange/TFCXbody/TFCXitem/fabricProd/piece/pieceWidth) 0-1</p>
postCode	<p>code defining the postal zone  - base type: string, max length: 10,  (XPath: TEXDyFinOrdChange/TFCXheader/buyer/postCode) 0-1  (XPath: TEXDyFinOrdChange/TFCXbody/TFCXitem/thirdParty/postCode) 0-1  (XPath: TEXDyFinOrdChange/TFCXheader/thirdParty/postCode) 0-1  (XPath: TEXDyFinOrdChange/TFCXheader/subContractor/postCode) 0-1</p>
price	<p>unit price of the article, object or service specified  - base type: decimal, min inclusive: 0, fraction digits: 2,  (XPath: TEXDyFinOrdChange/TFCXbody/TFCXitem/price) 0-1</p>
@priceQualifier	<p>type of price with reference to discount and taxes  - base type: string, cod. table: NT20  <a href="http://www.moda-ml.net/moda-ml/repository/codelist/v2013-1/gc_NT20.xml">http://www.moda-ml.net/moda-ml/repository/codelist/v2013-1/gc_NT20.xml</a>  (XPath: TEXDyFinOrdChange/TFCXbody/TFCXitem/price/@priceQualifier) [Optional] [Default= NET]</p>
qty	<p>net quantity of the article or object correlated, qualified by the function of the document (ordering, delivering, ..) and by the context  - base type: decimal, min inclusive: 0, fraction digits: 2,  (XPath: TEXDyFinOrdChange/TFCXbody/TFCXitem/fabricComponent/qty) 1-3  - note: <i>here is the code of the component used in the yarn manufacturing operation</i>  (XPath: TEXDyFinOrdChange/TFCXbody/TFCXitem/qty) 0-3</p>
@role	<p>Third Party role qualifier  - base type: string, cod. table: NT2  <a href="http://www.moda-ml.net/moda-ml/repository/codelist/v2013-1/gc_NT2.xml">http://www.moda-ml.net/moda-ml/repository/codelist/v2013-1/gc_NT2.xml</a>  (XPath: TEXDyFinOrdChange/TFCXheader/thirdParty/@role) [Required]  (XPath: TEXDyFinOrdChange/TFCXbody/TFCXitem/thirdParty/@role) [Required]</p>
season	<p>sale season; defined as: season (1 crt) + year (4 crt) - season: S/S=1 A/W=2 Spring=3 Summer=4 Autumn=5 Winter=6: for more than four seasons use alphabetic sequence: 1st season=A 2nd season=B etc.etc.  - base type: string, max length: 15,  (XPath:</p>

	<p>TEXDyFinOrdChange/TFCXbody/TFCXitem/fabMnfrOperation/refDoc/season) 0-1</p> <ul style="list-style-type: none"> <li>- note: here indicates the season to which the referenced document belongs (XPath: TEXDyFinOrdChange/TFCXbody/TFCXitem/refDoc/season) 0-1</li> <li>- note: here indicates the season to which the referenced document belongs (XPath: TEXDyFinOrdChange/TFCXheader/season) 0-1 (XPath: TEXDyFinOrdChange/TFCXheader/refDoc/season) 0-1</li> <li>- note: here indicates the season to which the referenced document belongs (XPath: TEXDyFinOrdChange/TFCXbody/TFCXitem/fabricComponent/refDoc/season) 0-1</li> <li>- note: here indicates the season to which the referenced document belongs</li> </ul>
@sender	<p>qualifier that specifies the Party issuing of the document</p> <ul style="list-style-type: none"> <li>- base type: boolean, (XPath: TEXDyFinOrdChange/TFCXheader/subContractor/@sender) [Optional]</li> <li>- nota: This attribute is mandatory when the STYLESHEET must be produced (XPath: TEXDyFinOrdChange/TFCXheader/buyer/@sender) [Optional]</li> <li>- nota: This attribute is mandatory when the STYLESHEET must be produced (XPath: TEXDyFinOrdChange/TFCXheader/thirdParty/@sender) [Optional]</li> <li>- nota: This attribute is mandatory when the STYLESHEET must be produced (XPath: TEXDyFinOrdChange/TFCXbody/TFCXitem/thirdParty/@sender) [Optional]</li> <li>- nota: This attribute is mandatory when the STYLESHEET must be produced</li> </ul>
serialN	<p>serial number used for the identification of a physical unit</p> <ul style="list-style-type: none"> <li>- base type: string, max length: 15, (XPath: TEXDyFinOrdChange/TFCXbody/TFCXitem/fabricProd/pieceChain/serialN) 1-1 (XPath: TEXDyFinOrdChange/TFCXbody/TFCXitem/fabricComponent/serialN) 0-99</li> <li>- note: it may be used to identify the pieces/chains that the Subcontractor must use for the commissioned work (XPath: TEXDyFinOrdChange/TFCXbody/TFCXitem/fabricProd/pieceChain/pieceCut/serialN) 1-1 (XPath: TEXDyFinOrdChange/TFCXbody/TFCXitem/fabricProd/piece/serialN) 1-3</li> </ul>
@source	<p>party who has provided the data</p> <ul style="list-style-type: none"> <li>- base type: string, cod. table: NT12 <a href="http://www.moda-ml.net/moda-ml/repository/codelist/v2013-1/gc_NT12.xml">http://www.moda-ml.net/moda-ml/repository/codelist/v2013-1/gc_NT12.xml</a></li> <li>(XPath: TEXDyFinOrdChange/TFCXbody/TFCXitem/fabMnfrOperation/texMachineSpecs/specValue/@source) [Optional] (XPath: TEXDyFinOrdChange/TFCXbody/TFCXitem/fabricProd/fabricSpecs/specValue/@source) [Optional]</li> </ul>
specValue	<p>value requested for a property or a parameter that is measured</p> <ul style="list-style-type: none"> <li>- base type: decimal, (XPath: TEXDyFinOrdChange/TFCXbody/TFCXitem/fabricProd/fabricSpecs/specValue) 0-1 (XPath: TEXDyFinOrdChange/TFCXbody/TFCXitem/fabMnfrOperation/texMachineSpecs/specValue) 0-1</li> </ul>
street	<p>street and building number identifying a location</p> <ul style="list-style-type: none"> <li>- base type: string, max length: 80, (XPath: TEXDyFinOrdChange/TFCXheader/subContractor/street) 0-1 (XPath: TEXDyFinOrdChange/TFCXbody/TFCXitem/thirdParty/street) 0-1 (XPath: TEXDyFinOrdChange/TFCXheader/thirdParty/street) 0-1 (XPath: TEXDyFinOrdChange/TFCXheader/buyer/street) 0-1</li> </ul>
subCountry	<p>short name or code of the sub-country entity</p> <ul style="list-style-type: none"> <li>- base type: string, max length: 9, (XPath: TEXDyFinOrdChange/TFCXheader/thirdParty/subCountry) 0-1 (XPath: TEXDyFinOrdChange/TFCXheader/subContractor/subCountry) 0-1 (XPath: TEXDyFinOrdChange/TFCXheader/buyer/subCountry) 0-1 (XPath: TEXDyFinOrdChange/TFCXbody/TFCXitem/thirdParty/subCountry) 0-1</li> </ul>
taxCategory	<p>duty or tax or fee category</p>



	<p>- base type: string, cod. table: T62  <a href="http://www.moda-ml.net/moda-ml/repository/codelist/v2013-1/gc_T62.xml">http://www.moda-ml.net/moda-ml/repository/codelist/v2013-1/gc_T62.xml</a>  (XPath: TEXDyFinOrdChange/TFCXbody/TFCXitem/dtScheme/taxCategory) 0-1  (XPath: TEXDyFinOrdChange/terms/allowanceCharge/dtScheme/taxCategory) 0-1</p>
taxRate	<p>duty or tax or fee percent rate  - base type: string,  (XPath: TEXDyFinOrdChange/terms/allowanceCharge/dtScheme/taxRate) 0-1  (XPath: TEXDyFinOrdChange/TFCXbody/TFCXitem/dtScheme/taxRate) 0-1</p>
@taxType	<p>duty or tax or fee type  - base type: string, cod. table: T61  <a href="http://www.moda-ml.net/moda-ml/repository/codelist/v2013-1/gc_T61.xml">http://www.moda-ml.net/moda-ml/repository/codelist/v2013-1/gc_T61.xml</a>  (XPath: TEXDyFinOrdChange/TFCXbody/TFCXitem/dtScheme/@taxType) [Required]  (XPath: TEXDyFinOrdChange/terms/allowanceCharge/dtScheme/@taxType) [Required]</p>
texJob	<p>operation of a work cycle for fabric  - base type: string, cod. table: T202  <a href="http://www.moda-ml.net/moda-ml/repository/codelist/v2013-1/gc_T202.xml">http://www.moda-ml.net/moda-ml/repository/codelist/v2013-1/gc_T202.xml</a>  (XPath: TEXDyFinOrdChange/TFCXbody/TFCXitem/fabMnfrOperation/texJob) 1-1</p>
texJobTech	<p>operation technology for fabric  - base type: string, cod. table: T262  <a href="http://www.moda-ml.net/moda-ml/repository/codelist/v2013-1/gc_T262.xml">http://www.moda-ml.net/moda-ml/repository/codelist/v2013-1/gc_T262.xml</a>  (XPath: TEXDyFinOrdChange/TFCXbody/TFCXitem/fabMnfrOperation/texJobTech) 0-9</p>
texMachine	<p>machine used in an operation of a work cycle for fabric  - base type: string, cod. table: T272  <a href="http://www.moda-ml.net/moda-ml/repository/codelist/v2013-1/gc_T272.xml">http://www.moda-ml.net/moda-ml/repository/codelist/v2013-1/gc_T272.xml</a>  (XPath: TEXDyFinOrdChange/TFCXbody/TFCXitem/fabMnfrOperation/texMachine) 0-1</p>
texMachineParam	<p>setting parameter of a machine used in an operation of a work cycle for fabric  - base type: string, cod. table: T282  <a href="http://www.moda-ml.net/moda-ml/repository/codelist/v2013-1/gc_T282.xml">http://www.moda-ml.net/moda-ml/repository/codelist/v2013-1/gc_T282.xml</a>  (XPath: TEXDyFinOrdChange/TFCXbody/TFCXitem/fabMnfrOperation/texMachineSpecs/texMachineParam)</p>
@TFCOtype	<p>type of "Textile Dyeing-Finishing commission order". This element is mandatory to declare reworking pieces.  - base type: string, cod. table: NT24  <a href="http://www.moda-ml.net/moda-ml/repository/codelist/v2013-1/gc_NT24.xml">http://www.moda-ml.net/moda-ml/repository/codelist/v2013-1/gc_NT24.xml</a>  (XPath: TEXDyFinOrdChange/@TFCOtype) [Required]</p>
@TID	<p>serial number wired into the RFID chip  - base type: string,  (XPath: TEXDyFinOrdChange/TFCXbody/TFCXitem/fabricProd/piece/EPC/@TID) [Optional]</p>
tolerance	<p>deviation tolerated on the value of a measurement (it must have a plus or minus sign)  - base type: decimal,  (XPath: TEXDyFinOrdChange/TFCXbody/TFCXitem/fabricProd/fabricSpecs/tolerance) 0-2  (XPath: TEXDyFinOrdChange/TFCXbody/TFCXitem/fabMnfrOperation/texMachineSpecs/tolerance) 0-2</p>
totFault	<p>total number of faults: the 1st/2nd digit count the "Large faults", the 3rd/4th the "Medium faults" and the 5th/6th the "Small faults"  - base type: positiveInteger,  (XPath: TEXDyFinOrdChange/TFCXbody/TFCXitem/fabricProd/piece/totFault) 0-1</p>
transCondition	<p>special condition of transport or special service requested to the Forwarder  - base type: string, cod. table: T38  <a href="http://www.moda-ml.net/moda-ml/repository/codelist/v2013-1/gc_T38.xml">http://www.moda-ml.net/moda-ml/repository/codelist/v2013-1/gc_T38.xml</a>  (XPath: TEXDyFinOrdChange/terms/transInfo/transCondition) 0-3</p>

transConditionText	free text description of the special condition of transport or special service requested to the Forwarder - base type: string, max length: 100, (XPath: <a href="#">TEXDyFinOrdChange/terms/transInfo/transConditionText</a> ) 0-1
transMeans	means of transport, in general or referred to a specific leg - base type: string, cod. table: T40 <a href="http://www.moda-ml.net/moda-ml/repository/codelist/v2013-1/gc_T40.xml">http://www.moda-ml.net/moda-ml/repository/codelist/v2013-1/gc_T40.xml</a> (XPath: <a href="#">TEXDyFinOrdChange/terms/transInfo/transMeans</a> ) 0-1
transMode	way of transport, in general or referred to the specified leg - base type: string, cod. table: T8 <a href="http://www.moda-ml.net/moda-ml/repository/codelist/v2013-1/gc_T8.xml">http://www.moda-ml.net/moda-ml/repository/codelist/v2013-1/gc_T8.xml</a> (XPath: <a href="#">TEXDyFinOrdChange/terms/transInfo/transMode</a> ) 1-1
@transReason	reason for the transport - base type: string, cod. table: NT11 <a href="http://www.moda-ml.net/moda-ml/repository/codelist/v2013-1/gc_NT11.xml">http://www.moda-ml.net/moda-ml/repository/codelist/v2013-1/gc_NT11.xml</a> (XPath: <a href="#">TEXDyFinOrdChange/terms/transInfo/@transReason</a> ) [Optional]
@um	specification of the unit of measure - base type: string, cod. table: NT7 <a href="http://www.moda-ml.net/moda-ml/repository/codelist/v2013-1/gc_NT7.xml">http://www.moda-ml.net/moda-ml/repository/codelist/v2013-1/gc_NT7.xml</a> (XPath: <a href="#">TEXDyFinOrdChange/TFCXbody/TFCXitem/fabMnfrOperation/texMachineSpecs/pcTolerance/@um</a> ) [Optional] - nota: <i>to be used when it has to be specified if the declared percentage is by weight, volume, etc.</i> (XPath: <a href="#">TEXDyFinOrdChange/TFCXbody/TFCXitem/fabMnfrOperation/texMachineSpecs/tolerance/@um</a> ) [Required] (XPath: <a href="#">TEXDyFinOrdChange/TFCXbody/TFCXitem/fabMnfrOperation/texMachineSpecs/specValue/@um</a> ) [Optional] (XPath: <a href="#">TEXDyFinOrdChange/TFCXbody/TFCXitem/fabricProd/pieceChain/pieceLength/@um</a> ) [Optional] [Default= MTR] (XPath: <a href="#">TEXDyFinOrdChange/TFCXbody/TFCXitem/fabricProd/fabricSpecs/pcTolerance/@um</a> ) [Optional] - nota: <i>to be used when it has to be specified if the declared percentage is by weight, volume, etc.</i> (XPath: <a href="#">TEXDyFinOrdChange/TFCXbody/TFCXitem/fabricProd/pieceChain/pieceWidth/@um</a> ) [Optional] [Default= CMT] (XPath: <a href="#">TEXDyFinOrdChange/TFCXbody/TFCXitem/fabricProd/pieceChain/pieceCut/pieceLength/@um</a> ) [Optional] [Default= MTR] (XPath: <a href="#">TEXDyFinOrdChange/TFCXbody/TFCXitem/fabricProd/pieceChain/pieceWeight/@um</a> ) [Optional] [Default= KGM] (XPath: <a href="#">TEXDyFinOrdChange/terms/transInfo/netWeight/@um</a> ) [Required] (XPath: <a href="#">TEXDyFinOrdChange/terms/transInfo/grossWeight/@um</a> ) [Required] (XPath: <a href="#">TEXDyFinOrdChange/TFCXbody/TFCXitem/fabricProd/fabricWidth/@um</a> ) [Optional] [Default= CMT] (XPath: <a href="#">TEXDyFinOrdChange/TFCXbody/TFCXitem/fabricProd/fabricSpecs/tolerance/@um</a> ) [Required] (XPath: <a href="#">TEXDyFinOrdChange/TFCXbody/TFCXitem/fabricProd/fabricSpecs/specValue/@um</a> ) [Optional] (XPath: <a href="#">TEXDyFinOrdChange/TFCXbody/TFCXitem/fabricProd/pieceChain/pieceCut/pieceWeight/@um</a> ) [Optional] [Default= KGM] (XPath: <a href="#">TEXDyFinOrdChange/TFCXbody/TFCXitem/qty/@um</a> ) [Required] (XPath: <a href="#">TEXDyFinOrdChange/TFCXbody/TFCXitem/fabricProd/piece/pieceAllow/@um</a> ) [Required] (XPath: <a href="#">TEXDyFinOrdChange/TFCXbody/TFCXitem/fabricComponent/qty/@um</a> ) [Required] (XPath: <a href="#">TEXDyFinOrdChange/TFCXbody/TFCXitem/price/@um</a> ) [Optional] - nota: <i>Unit of measure of the product to which the price is referred (price per meter)</i> (XPath: <a href="#">TEXDyFinOrdChange/TFCXbody/TFCXitem/fabricProd/piece/pieceWeightM/@um</a> ) [Optional] [Default= GRM] (XPath: <a href="#">TEXDyFinOrdChange/TFCXbody/TFCXitem/fabricProd/piece/pieceWidth/@um</a> ) [Optional] [Default= CMT] (XPath: <a href="#">TEXDyFinOrdChange/TFCXbody/TFCXitem/fabricProd/piece/pieceLength/@um</a> ) [Optional] [Default= MTR]

	<p>(XPath: <code>TEXDyFinOrdChange/TFCXbody/TFCXitem/fabricProd/piece/pieceWeight/@um</code>) [Optional] [Default= KGM]</p> <p>(XPath: <code>TEXDyFinOrdChange/TFCXbody/TFCXitem/fabricProd/piece/pieceCutWidth/@um</code>) [Optional] [Default= CMT]</p>
<code>@useProfile</code>	<p>use profile to which the present document is compliant if it was agreed by the parties. It is suggested to use a unique URI with reference to the firms or the URL of the profile.</p> <p>- base type: string,</p> <p>(XPath: <code>TEXDyFinOrdChange/@useProfile</code>) [Optional]</p>
<code>@VAT</code>	<p>VAT rate or code ( deprecated, use dtScheme element )</p> <p>- base type: string, cod. table: NT16</p> <p><a href="http://www.moda-ml.net/moda-ml/repository/codelist/v2013-1/gc_NT16.xml">http://www.moda-ml.net/moda-ml/repository/codelist/v2013-1/gc_NT16.xml</a></p> <p>(XPath: <code>TEXDyFinOrdChange/TFCXheader/thirdParty/@VAT</code>) [Optional]</p> <p>(XPath: <code>TEXDyFinOrdChange/TFCXbody/TFCXitem/lineN/@VAT</code>) [Optional]</p> <p>(XPath: <code>TEXDyFinOrdChange/terms/allowanceCharge/@VAT</code>) [Optional]</p> <p>(XPath: <code>TEXDyFinOrdChange/TFCXbody/TFCXitem/thirdParty/@VAT</code>) [Optional]</p>
<code>@version</code>	<p>Dictionary version from which the instance has been created</p> <p>- base type: string, cod. table: NT100</p> <p><a href="http://www.moda-ml.net/moda-ml/repository/codelist/v2013-1/gc_NT100.xml">http://www.moda-ml.net/moda-ml/repository/codelist/v2013-1/gc_NT100.xml</a></p> <p>(XPath: <code>TEXDyFinOrdChange/@version</code>) [Optional] [Default= 2013-1]</p>

## 2.3 Enumeration tables

List of enumeration tables used in the XML document. You can find the corresponding codes at: <http://www.moda-ml.org/moda-ml/imple/moda-ml-2013-1.asp?lingua=en&pag=6>

NT100 - eBIZ Moda-ML version  
NT11 - transport causal  
NT12 - data source  
NT16 - VAT rate or code  
NT18 - message function  
NT2 - third party qualifier  
NT20 - price qualifier  
NT24 - Textile Dyeing-Finishing Order type  
NT29 - format of a date  
NT3 - data format  
NT38 - colour test  
NT4 - end use  
NT5 - action code  
NT6 - coding system owner/issuer  
NT7 - unity of measure  
T1 - terms of payment  
T10 - ISO3166 - Country  
T13 - CFM properties of fabric  
T19 - fibre type  
T2 - Modes of payment  
T202 - type of job on fabric  
T21 - type of document  
T262 - type of job technology for fabric  
T272 - machine type for fabric operation  
T282 - parameter type for fabric operation  
T3 - terms of delivery  
T38 - transport conditions  
T4 - fabric piece inner packing (wrapping) 1  
T40 - type of transport means  
T41 - type of Allowance or Charge  
T44 - additional code type  
T5 - fabric piece inner packing (wrapping) 2  
T52 - fabric piece status  
T6 - fabric piece outer packing  
T61 - duty or tax or fee type  
T62 - duty or tax or fee category  
T8 - Modes of Transport  
T9 - ISO4217 - Currency

# Annex A

Representative images of the principal complex elements' structure.

